
First published in the *Government Gazette*, Electronic Edition, on 1st June 2011 at 5:00 pm.

No. S 283

PROTECTED AREAS AND PROTECTED PLACES ACT
(CHAPTER 256)

PROTECTED AREAS (NO. 6)
ORDER 2011

ARRANGEMENT OF PARAGRAPHS

Paragraph

1. Citation and commencement
 2. Area declared to be protected area
The Schedule
-

In exercise of the powers conferred by section 4(1) of the Protected Areas and Protected Places Act, the Minister for Home Affairs hereby makes the following Order:

Citation and commencement

1. This Order may be cited as the Protected Areas (No. 6) Order 2011 and shall come into operation on 1st June 2011.

Area declared to be protected area

2. The area described in the second column of the Schedule is hereby declared to be a protected area for the purposes of the Act, and every person who is in that area shall comply with such directions for regulating his movement and conduct as may be given by an authorised officer acting by or on behalf of the authority specified in the first column of the Schedule.

THE SCHEDULE

<i>First column</i>	<i>Second column</i>																																				
The Authority	Protected Area																																				
Commander, Woodlands Command, Immigration & Checkpoints Authority	<p>WOODLANDS TRAIN CHECKPOINT.</p> <p>All that area comprised in State Land Lot 99618K, part of State Land Lots 189W, 192W, 1974N, 1975X, 1976L, 1977C, 3871P, 3929K, 99332W, 99469T, 99619N, 99624L, 99625C, 99627W, 99631V and 99649K in Mukim No. 13 (SEMBAWANG) occupied by “WOODLANDS TRAIN CHECKPOINT” containing an area of about 23,596 square metres and bounded approximately as follows:</p> <p>Commencing at the northernmost corner of the aforesaid “WOODLANDS TRAIN CHECKPOINT” which point is 47,493.292 metres North and 20,936.750 metres East of the Singapore Land Authority SVY21 Datum, the boundaries run along successive lines of co-ordinates approximately as follows:</p> <table border="1"> <thead> <tr> <th><i>Northing</i></th> <th><i>Easting</i></th> </tr> </thead> <tbody> <tr><td>47493.292</td><td>20936.750</td></tr> <tr><td>47492.966</td><td>20937.570</td></tr> <tr><td>47493.250</td><td>20938.289</td></tr> <tr><td>47484.086</td><td>20962.014</td></tr> <tr><td>47483.935</td><td>20962.786</td></tr> <tr><td>47483.873</td><td>20963.106</td></tr> <tr><td>47473.527</td><td>20959.398</td></tr> <tr><td>47470.964</td><td>20966.517</td></tr> <tr><td>47480.547</td><td>20969.373</td></tr> <tr><td>47475.950</td><td>20984.797</td></tr> <tr><td>47468.385</td><td>20982.463</td></tr> <tr><td>47460.656</td><td>20982.118</td></tr> <tr><td>47459.114</td><td>20981.563</td></tr> <tr><td>47443.698</td><td>20976.732</td></tr> <tr><td>47440.137</td><td>20977.740</td></tr> <tr><td>47435.216</td><td>20975.761</td></tr> <tr><td>47436.108</td><td>20973.390</td></tr> </tbody> </table>	<i>Northing</i>	<i>Easting</i>	47493.292	20936.750	47492.966	20937.570	47493.250	20938.289	47484.086	20962.014	47483.935	20962.786	47483.873	20963.106	47473.527	20959.398	47470.964	20966.517	47480.547	20969.373	47475.950	20984.797	47468.385	20982.463	47460.656	20982.118	47459.114	20981.563	47443.698	20976.732	47440.137	20977.740	47435.216	20975.761	47436.108	20973.390
<i>Northing</i>	<i>Easting</i>																																				
47493.292	20936.750																																				
47492.966	20937.570																																				
47493.250	20938.289																																				
47484.086	20962.014																																				
47483.935	20962.786																																				
47483.873	20963.106																																				
47473.527	20959.398																																				
47470.964	20966.517																																				
47480.547	20969.373																																				
47475.950	20984.797																																				
47468.385	20982.463																																				
47460.656	20982.118																																				
47459.114	20981.563																																				
47443.698	20976.732																																				
47440.137	20977.740																																				
47435.216	20975.761																																				
47436.108	20973.390																																				

THE SCHEDULE — *continued*

<i>First column</i>	<i>Second column</i>	
The Authority	Protected Area	
	<i>Northing</i>	<i>Easting</i>
	47387.015	20953.646
	47386.693	20954.242
	47378.855	20950.989
	47359.782	20942.857
	47359.860	20942.674
	47346.063	20937.126
	47295.416	20916.736
	47294.355	20918.748
	47264.756	20907.143
	47263.112	20911.350
	47254.935	20907.959
	47256.453	20903.914
	47246.430	20899.931
	47249.385	20892.377
	47261.927	20897.293
	47265.401	20888.388
	47260.968	20885.678
	47250.860	20879.247
	47248.753	20878.023
	47241.300	20873.013
	47233.953	20868.084
	47224.214	20861.407
	47214.433	20854.406
	47204.777	20847.357
	47192.746	20838.278
	47183.222	20830.898
	47171.885	20821.833
	47162.508	20814.054
	47148.691	20802.167
	47135.181	20789.989

THE SCHEDULE — *continued*

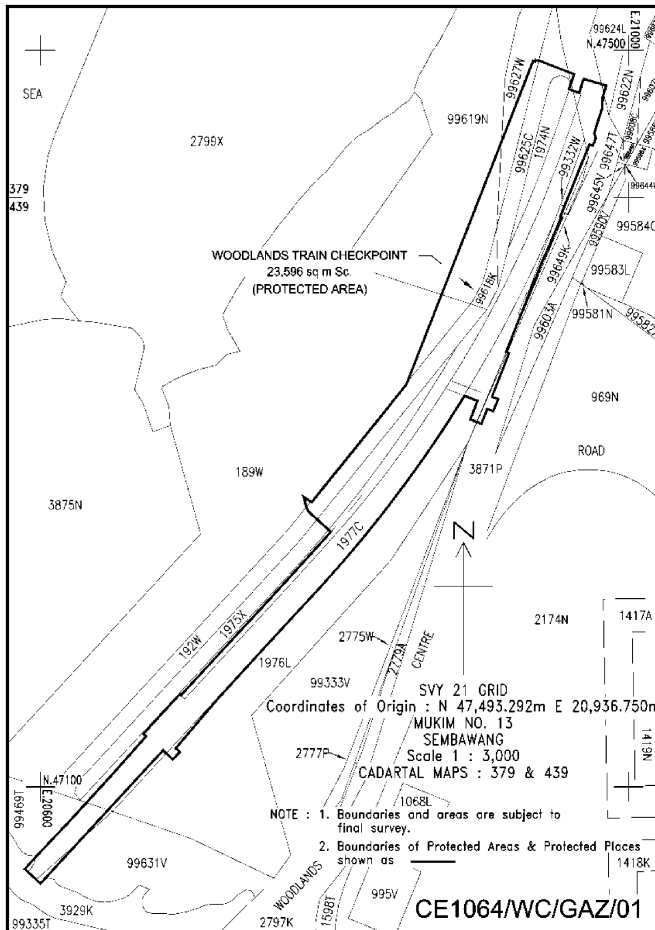
<i>First column</i>		<i>Second column</i>
The Authority		Protected Area
	<i>Northing</i>	<i>Easting</i>
	47096.350	20754.042
	47059.741	20720.610
	47026.239	20692.043
	47023.657	20694.817
	47018.603	20690.094
	47024.757	20683.344
	47015.367	20674.659
	46953.079	20617.201
	46934.398	20600.013
	46944.234	20589.323
	46954.272	20598.559
	46978.494	20621.412
	47007.494	20648.078
	47034.363	20671.874
	47036.013	20669.970
	47062.995	20694.804
	47062.208	20695.565
	47092.593	20723.676
	47119.702	20748.741
	47147.575	20774.443
	47173.116	20797.502
	47185.514	20783.867
	47187.119	20782.080
	47188.862	20781.304
	47190.168	20780.722
	47196.757	20779.010
	47193.270	20784.541
	47218.777	20805.265
	47253.501	20833.205
	47273.157	20848.913

THE SCHEDULE — *continued*

<i>First column</i>	<i>Second column</i>	
The Authority	Protected Area	
	<i>Northing</i>	<i>Easting</i>
	47492.787	20935.145
	47492.364	20936.389

to the point of commencement.

The boundaries of “WOODLANDS TRAIN CHECKPOINT” are more particularly delineated on the Survey Plan No. CE1064/WC/GAZ/01 filed in the office of the Commander, Woodlands Command, Immigration & Checkpoints Authority, Singapore, a copy of which is set out below.



Made this 30th day of May 2011.

BENNY LIM
*Permanent Secretary,
Ministry of Home Affairs,
Singapore.*

[MHA (PS) 12/2/07 TF 1; AG/LLRD/SL/256/2010/2 Vol. 1]