
First published in the Government *Gazette*, Electronic Edition, on 4th July 2012 at 5:00 pm.

No. S 316

PROTECTED AREAS AND PROTECTED PLACES ACT (CHAPTER 256)

PROTECTED PLACES (NO. 2) ORDER 2012

In exercise of the powers conferred by section 5(1) of the Protected Areas and Protected Places Act, the Minister for Home Affairs hereby makes the following Order:

Citation and commencement

1. This Order may be cited as the Protected Places (No. 2) Order 2012 and shall come into operation on 4th July 2012.

Premises declared to be protected place

2. The premises described in the second column of the Schedule are hereby declared to be a protected place for the purposes of the Act, and no person shall be in those premises unless he is in possession of a pass-card or permit issued by the authority specified in the first column of the Schedule or has received the permission of an authorised officer on duty at the premises to enter the premises.

THE SCHEDULE

<i>First column</i>	<i>Second column</i>
The Authority	Protected Place
Chief Executive Officer, Changi Airport Group (Singapore) Pte. Ltd	CHANGI AIRPORT – AIRCRAFT PARKING STANDS 611 AND 612.

All that area comprised in part of Lot 4693A PT in Mukim No. 31 occupied by “CHANGI AIRPORT – AIRCRAFT PARKING STANDS 611 AND 612” containing an area of about 34990 square metres and bounded approximately as follows:

THE SCHEDULE — *continued**First column**Second column*

The Authority

Protected Place

Commencing at a point of the aforesaid “CHANGI AIRPORT – AIRCRAFT PARKING STANDS 611 AND 612” which point is 39552.560 metres North and 46602.641 metres East of the Singapore Land Authority SVY 21 Datum, the boundaries run along successive lines of co-ordinates approximately as follows:

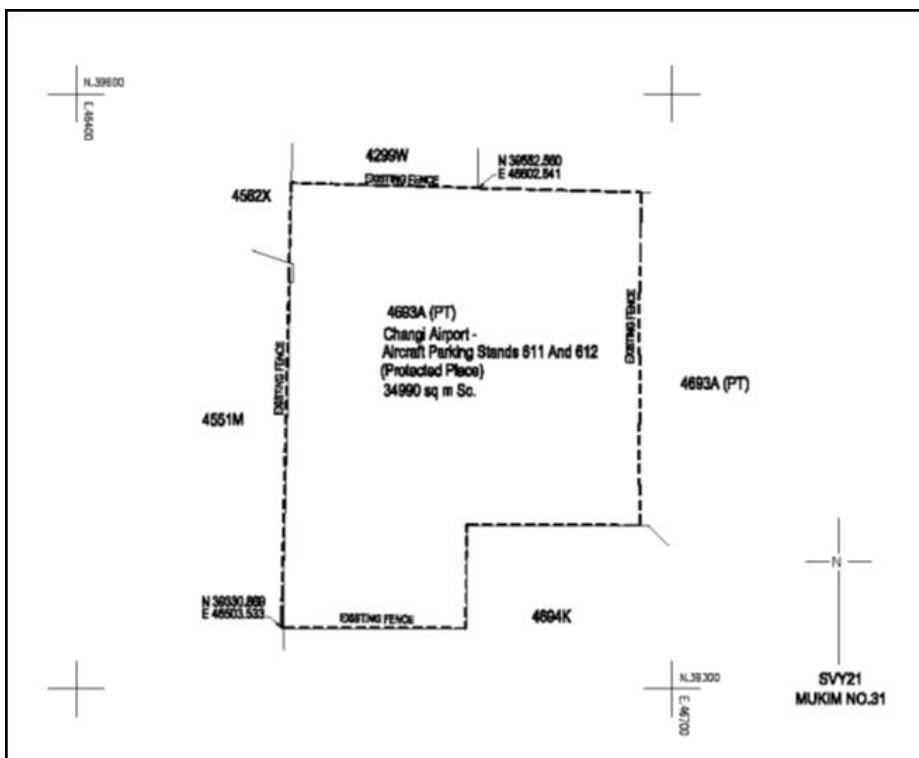
<i>Northing</i>	<i>Easting</i>
39552.560	46602.641
39552.384	46602.643
39552.355	46602.746
39551.972	46621.145
39551.591	46636.174
39551.146	46652.807
39550.724	46669.665
39550.359	46684.176
39550.100	46684.278
39537.246	46684.237
39530.657	46684.220
39521.185	46684.204
39499.862	46684.124
39499.862	46683.448
39468.685	46683.362
39468.680	46684.032
39433.787	46683.933
39433.787	46683.252
39402.649	46683.182
39402.649	46683.852
39382.463	46683.790

 THE SCHEDULE — *continued*

<i>First column</i>		<i>Second column</i>
The Authority		Protected Place
	39382.474	46681.850
	39382.725	46596.440
	39330.594	46596.275
	39330.872	46504.620
	39330.869	46503.533
	39336.700	46503.600
	39349.240	46503.710
	39363.847	46504.018
	39508.345	46507.162
	39555.097	46508.147
	39553.906	46552.546
	39553.403	46571.952

to the point of commencement.

The boundaries of “CHANGI AIRPORT – AIRCRAFT PARKING STANDS 611 AND 612” are more particularly delineated in the Survey Plan No. SCA2010-49/A3/GA/1 set out below.

THE SCHEDULE — *continued*

Made this 2nd day of July 2012.

TAN TEE HOW
*Permanent Secretary,
 Ministry of Home Affairs,
 Singapore.*

[MHA (PS) 12/2/06/ TF 7; CP/C/198/39 V29;
 AG/LLRD/SL/256/2010/1 Vol. 3]