
First published in the Government *Gazette*, Electronic Edition, on 3rd October 2005 at 5:00 pm.

No. S 639

**ROAD TRAFFIC ACT
(CHAPTER 276)**

**ROAD TRAFFIC (TRAFFIC SIGNS) (AMENDMENT NO. 4)
RULES 2005**

In exercise of the powers conferred by section 119 of the Road Traffic Act, the Land Transport Authority of Singapore, with the approval of the Minister for Transport, hereby makes the following Rules:

Citation and commencement

1. These Rules may be cited as the Road Traffic (Traffic Signs) (Amendment No. 4) Rules 2005 and shall come into operation on 3rd October 2005.

Amendment of rule 7

2. Rule 7 of the Road Traffic (Traffic Signs) Rules (R 33) (referred to in these Rules as the principal Rules) is amended —

(a) by inserting, immediately before the words “bus lane” in paragraphs (1)(k) and (11), the word “part-day”;

(b) by inserting, immediately after sub-paragraph (k) of paragraph (1), the following sub-paragraph:

“(ka) a full-day bus lane;” and

(c) by inserting, immediately after paragraph (11), the following paragraph:

“(11A) A full-day bus lane is the section of a road marked by —

(a) a longitudinal continuous yellow line of not less than 300 mm in width parallel to a longitudinal continuous red line of not less than 150 mm in width; and

(b) transverse yellow lines of not less than 200 mm in width and 1,200 mm in length, as shown in diagrams 115(e) to 115(h) in Part III of the Schedule.”.

Amendment of rule 8

3. Rule 8 of the principal Rules is amended —

(a) by deleting paragraph (1) and substituting the following paragraph:

“(1) Except on a Sunday or a public holiday, no person shall drive a vehicle other than an omnibus, or cause or permit any such vehicle to remain —

(a) on a full-day bus lane during the hours of 7.30 a.m. to 8.00 p.m.; or

(b) on a part-day bus lane during the hours of —

(i) 7.30 a.m. to 9.30 a.m. and 4.30 p.m. to 7.00 p.m. on a weekday other than a Saturday; and

(ii) 7.30 a.m. to 9.30 a.m. and 11.30 a.m. to 2.00 p.m. on a Saturday.”; and

(b) by inserting, immediately after paragraph (2), the following paragraph:

“(3) In this rule, “bus lane” means any full-day or part-day bus lane.”.

Amendment of Schedule

4. Part III of the Schedule to the principal Rules is amended —

(a) by inserting, immediately before the words “BUS LANE” in diagram 113, the words “PART-DAY AND FULL-DAY”;

(b) by inserting, immediately before the words “BUS LANE” in diagram 114, the word “PART-DAY”;

(c) by inserting, immediately after diagram 114, the following diagram:

“DIAGRAM 114(a)



FULL-DAY BUS LANE

”;

- (d) by inserting, immediately after the words “AT SIGNALISED INTERSECTION” in diagram 115(a), the words “FOR PART-DAY BUS LANE”;

- (e) by inserting, immediately before the words “BUS LANE MARKINGS” in diagram 115(d), the word “PART-DAY”;
- and
- (f) by inserting, immediately after diagram 115(d), the following diagrams:

“DIAGRAM 115(e)

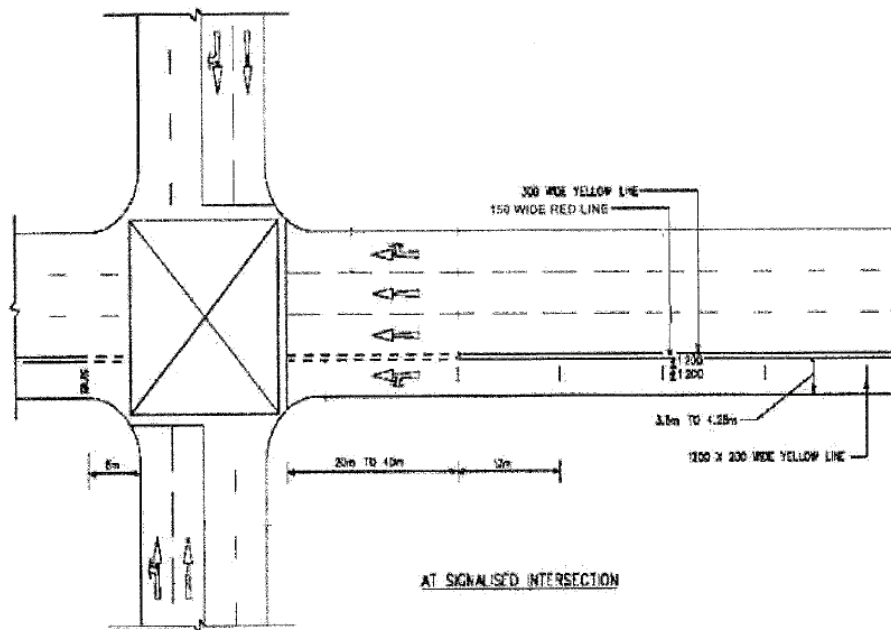
AT SIGNALISED INTERSECTION FOR FULL-DAY BUS
LANE

DIAGRAM 115(f)

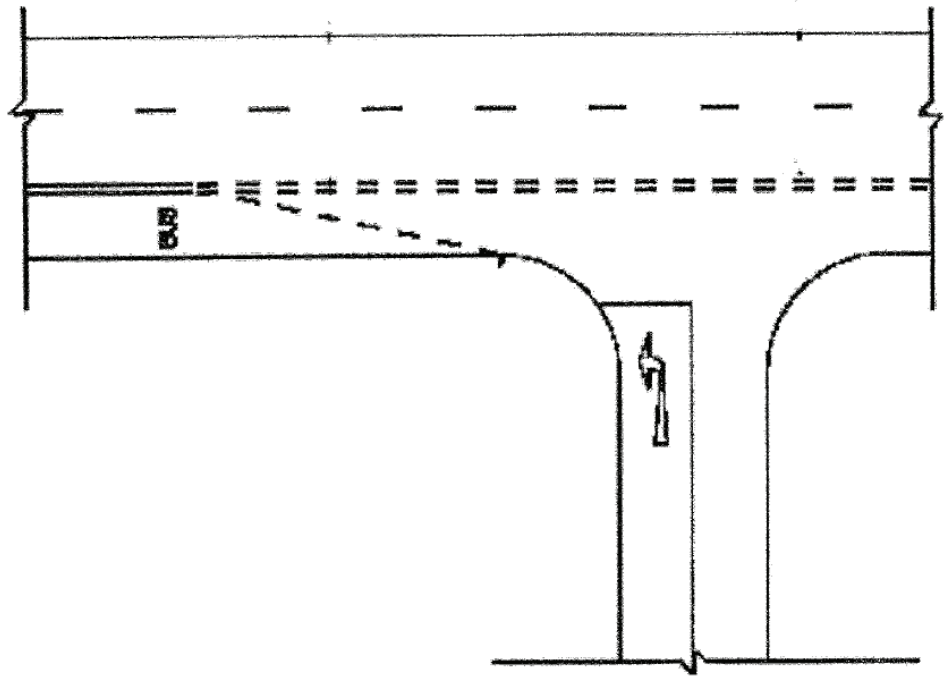


DIAGRAM 115(g)

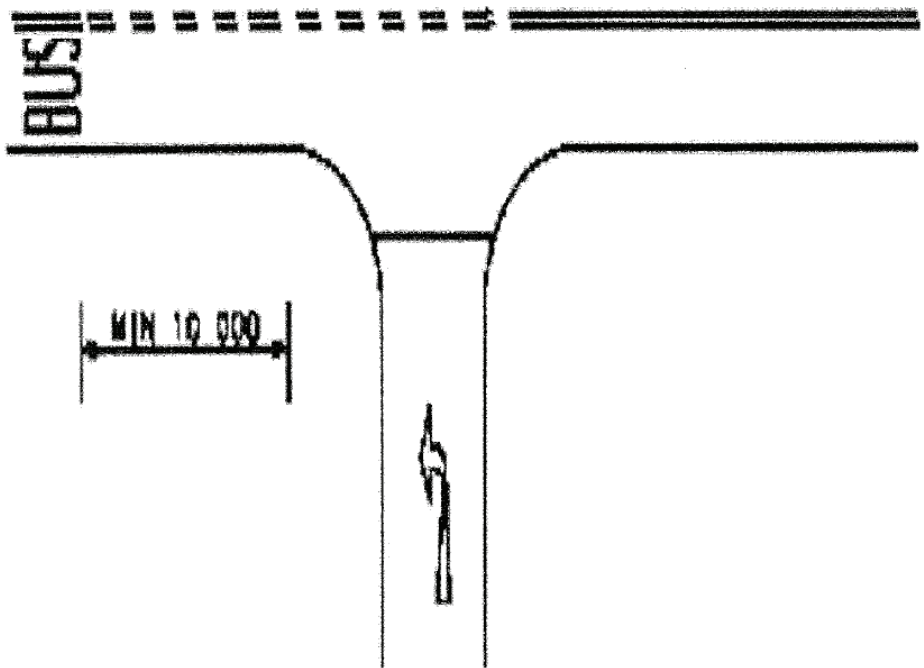
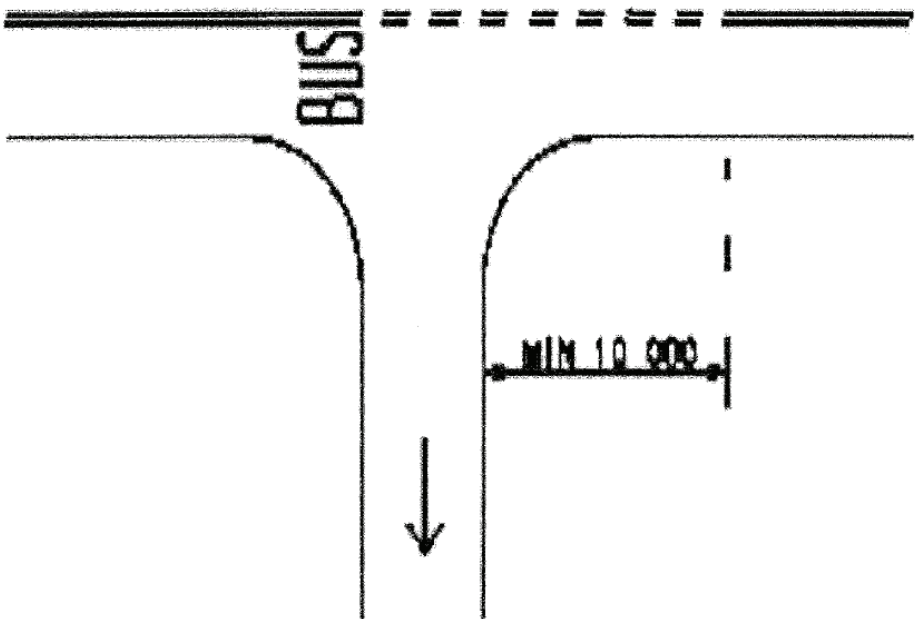


DIAGRAM 115(h)



AT UNCONTROLLED JUNCTIONS OR OPENINGS

FULL-DAY BUS LANE MARKINGS”.

*[G.N. Nos. S 13/2000; S 83/2000; S 375/2001; S 549/2001;
S 334/2003; S 3/2005; S 572/2005; S 577/2005]*

Made this 3rd day of October 2005.

MICHAEL LIM CHOO SAN
*Chairman,
Land Transport Authority of
Singapore.*

[L17.007.000/14; AG/LEG/SL/276/2005/26 Vol. 1]

(To be presented to Parliament under section 141(1) of the Road Traffic Act).