

---

---

First published in the Government *Gazette*, Electronic Edition, on 13 September 2022 at 5 pm.

## No. S 736

### INFRASTRUCTURE PROTECTION ACT 2017

#### INFRASTRUCTURE PROTECTION (PROTECTED AREAS) (NO. 2) ORDER 2022

##### ARRANGEMENT OF PARAGRAPHS

###### Paragraph

1. Citation and commencement
  2. Premises declared to be protected area
  3. Revocation
- The Schedule
- 

In exercise of the powers conferred by sections 8(1) and 13(1) of the Infrastructure Protection Act 2017, the Minister for Home Affairs makes the following Order:

#### **Citation and commencement**

1. This Order is the Infrastructure Protection (Protected Areas) (No. 2) Order 2022 and comes into operation on 14 September 2022.

#### **Premises declared to be protected area**

2. The premises described in the second column of the Schedule are declared to be a protected area for the purposes of the Act, and the person specified in the first column of that Schedule is designated as the authority of the protected area.

#### **Revocation**

3. In the Schedule to the Protected Areas (Consolidation) Order (O 3), delete item (3).

---



---

THE SCHEDULE

Paragraph 2

<i>First column</i>	<i>Second column</i>
The Authority	Protected Area
Director, PB Tankers Ltd	PB TANKERS LTD AT 1 PULAU BUSING SINGAPORE 118363

All that area comprised in part of Lots 2222N, 2223X, 1948X, 1943P, 2542W, 2518X, 2588V, 2543V, 2517N, 3432K, 3433N, 2529A, 2530P, 2531T, 348K, 456X, 604L, 606M, 591K, 1206C, 1207M, 1871P, 2239C and 2907C in Mukim No. 34 occupied by PB TANKERS LTD containing an area of about 648759.6 square metres and bounded approximately as follows:

Commencing at a point 24463.339 metres North and 17109.875 metres East of the Singapore Land Authority SVY 21 Datum, the boundaries run along successive lines of coordinates approximately as follows:

<i>Northing</i>	<i>Easting</i>
24463.339	17109.875
24464.350	17117.548
24459.392	17118.202
24462.954	17145.234
24466.947	17144.708
24467.959	17152.394
24463.967	17152.920
24469.332	17193.639
24472.312	17193.247
24477.254	17230.759
24483.217	17229.973
24478.318	17192.790
24492.584	17190.910
24492.009	17186.548

---



---

 THE SCHEDULE — *continued*

<i>First column</i>	<i>Second column</i>
The Authority	Protected Area
24489.653	17186.858
24488.117	17175.197
24499.143	17173.745
24500.680	17185.405
24494.309	17186.245
24494.787	17189.875
24501.158	17189.036
24507.290	17235.574
24500.900	17236.416
24501.374	17240.015
24507.765	17239.173
24509.304	17250.856
24498.255	17252.312
24496.715	17240.629
24499.100	17240.315
24498.525	17235.953
24484.253	17237.833
24483.841	17234.708
24477.878	17235.493
24478.482	17240.073
24474.459	17240.603
24479.268	17277.105
24485.374	17276.301
24489.375	17278.829
24490.150	17284.716
24486.940	17288.197
24481.546	17288.908

THE SCHEDULE — *continued*

<i>First column</i>	<i>Second column</i>
The Authority	Protected Area
24485.853	17321.621
24491.247	17320.911
24495.248	17323.440
24496.023	17329.327
24492.813	17332.808
24487.419	17333.518
24495.943	17398.263
24499.928	17397.739
24505.409	17397.361
24519.585	17395.494
24517.673	17380.971
24511.464	17381.789
24509.636	17367.908
24520.660	17366.457
24523.017	17369.940
24524.732	17369.714
24525.578	17376.137
24523.862	17376.363
24522.488	17380.337
24520.846	17380.553
24522.660	17394.332
24527.714	17393.666
24534.005	17441.453
24528.951	17442.120
24530.766	17455.903
24532.408	17455.687
24534.764	17459.170

---



---

 THE SCHEDULE — *continued*

<i>First column</i>	<i>Second column</i>
The Authority	Protected Area
24536.479	17458.944
24537.325	17465.367
24535.610	17465.593
24534.235	17469.567
24523.211	17471.019
24521.384	17457.138
24527.593	17456.321
24525.681	17441.795
24511.070	17443.718
24510.647	17440.503
24505.640	17441.164
24506.241	17445.725
24502.261	17446.249
24510.849	17511.487
24516.268	17510.774
24519.124	17512.380
24519.786	17517.403
24517.442	17519.697
24512.024	17520.410
24516.527	17554.615
24521.984	17553.896
24525.915	17556.381
24526.704	17562.373
24523.550	17565.794
24518.094	17566.512
24522.596	17600.713
24528.035	17599.997

THE SCHEDULE — *continued*

<i>First column</i>		<i>Second column</i>
The Authority		Protected Area
	24530.869	17601.591
	24531.534	17606.644
	24529.209	17608.920
	24523.771	17609.636
	24532.360	17674.876
	24536.397	17674.345
	24542.071	17674.953
	24556.133	17673.099
	24554.221	17658.576
	24548.011	17659.393
	24546.184	17645.513
	24557.208	17644.062
	24559.564	17647.545
	24561.279	17647.319
	24562.125	17653.742
	24560.410	17653.967
	24559.035	17657.942
	24557.393	17658.158
	24559.207	17671.937
	24564.261	17671.270
	24570.552	17719.058
	24565.499	17719.724
	24567.313	17733.508
	24568.955	17733.292
	24571.311	17736.775
	24573.027	17736.549
	24573.872	17742.972

---



---

 THE SCHEDULE — *continued*

<i>First column</i>	<i>Second column</i>
The Authority	Protected Area
24572.157	17743.197
24570.782	17747.172
24559.758	17748.623
24557.931	17734.743
24564.141	17733.925
24562.228	17719.399
24547.617	17721.323
24547.224	17718.339
24542.218	17718.998
24542.657	17722.338
24538.678	17722.862
24547.396	17789.088
24552.878	17788.366
24555.782	17789.999
24556.434	17794.957
24554.052	17797.289
24548.571	17798.011
24553.009	17831.723
24557.724	17831.102
24558.865	17831.978
24590.712	17873.126
24591.047	17873.082
24617.221	18072.151
24616.887	18072.195
24592.958	18076.102
24597.328	18109.337
24496.831	18082.276

THE SCHEDULE — *continued*

<i>First column</i>		<i>Second column</i>
The Authority		Protected Area
	24399.615	18095.085
	24399.992	18098.262
	24401.035	18104.805
	24407.505	18134.332
	24412.581	18163.988
	24418.753	18193.542
	24424.029	18223.181
	24429.006	18252.846
	24433.485	18282.560
	24439.624	18313.968
	24440.806	18327.045
	24513.058	18317.427
	24611.397	18304.475
	24622.483	18250.803
	24601.233	18238.380
	24585.408	18214.241
	24578.358	18160.705
	24601.292	18234.938
	24621.986	18247.038
	24640.014	18246.072
	24643.095	18269.466
	24647.188	18300.544
	24652.182	18338.461
	24656.280	18369.575
	24659.365	18392.999
	24641.718	18396.854
	24621.997	18491.845



---



---

 THE SCHEDULE — *continued*

<i>First column</i>	<i>Second column</i>
The Authority	Protected Area
24614.946	18438.309
24623.550	18410.954
24641.171	18392.702
24590.627	18329.888
24593.413	18351.031
24619.314	18563.018
24626.772	18562.200
24657.105	18647.011
24675.211	18651.130
24692.737	18646.362
24694.413	18659.083
24695.853	18670.019
24697.551	18682.910
24698.933	18693.403
24703.864	18730.843
24705.246	18741.337
24706.936	18754.168
24708.392	18765.220
24710.065	18777.922
24691.947	18778.202
24674.309	18863.626
24666.345	18803.150
24676.701	18782.622
24691.499	18774.808
24581.362	18428.011
24575.202	18423.315
24570.150	18419.459

THE SCHEDULE — *continued*

<i>First column</i>		<i>Second column</i>
The Authority		Protected Area
	24562.519	18413.635
	24510.184	18390.101
	24509.112	18389.657
	24499.765	18387.862
	24483.875	18385.590
	24484.356	18382.676
	24498.938	18384.607
	24504.874	18385.443
	24509.384	18386.596
	24567.797	18401.596
	24564.859	18379.290
	24567.606	18378.928
	24566.466	18370.274
	24573.633	18369.330
	24568.505	18330.396
	24489.620	18346.245
	24484.480	18346.922
	24483.773	18341.556
	24441.941	18347.066
	24443.642	18386.094
	24441.316	18410.619
	24428.437	18502.194
	24480.904	18510.033
	24481.454	18506.328
	24482.754	18506.512
	24485.973	18502.605
	24486.945	18502.749

---



---

 THE SCHEDULE — *continued*

<i>First column</i>	<i>Second column</i>
The Authority	Protected Area
24483.963	18522.842
24483.033	18522.705
24481.099	18518.251
24480.046	18518.095
24480.610	18514.295
24427.836	18506.462
24427.437	18509.302
24412.228	18610.973
24403.819	18651.140
24393.543	18678.812
24387.873	18694.194
24437.256	18708.272
24444.311	18686.010
24446.424	18678.601
24446.135	18678.519
24452.233	18657.128
24451.462	18656.915
24460.123	18626.534
24460.786	18626.723
24460.278	18605.329
24458.598	18604.863
24460.334	18598.599
24461.181	18598.834
24466.119	18581.006
24465.306	18580.780
24467.041	18574.516
24473.305	18576.251

THE SCHEDULE — *continued*

<i>First column</i>	<i>Second column</i>
The Authority	Protected Area
24471.570	18582.515
24469.492	18581.940
24464.554	18599.768
24466.598	18600.334
24464.863	18606.598
24463.802	18606.305
24464.311	18627.728
24472.625	18630.098
24463.771	18661.157
24462.136	18660.690
24461.643	18662.421
24458.565	18661.544
24455.007	18674.027
24460.488	18675.589
24458.624	18682.129
24453.431	18680.648
24451.346	18687.961
24453.830	18689.289
24456.376	18690.015
24454.511	18696.554
24452.014	18695.842
24447.167	18713.324
24447.376	18713.382
24438.622	18744.956
24438.412	18744.898
24433.524	18762.528
24435.828	18763.185

THE SCHEDULE — *continued*

<i>First column</i>	<i>Second column</i>
The Authority	Protected Area
24433.964	18769.724
24431.708	18769.081
24428.316	18768.742
24427.490	18771.643
24430.278	18772.438
24429.785	18774.169
24432.478	18774.937
24423.704	18805.711
24415.412	18803.347
24402.838	18821.339
24404.456	18821.800
24402.674	18828.051
24400.582	18827.455
24395.510	18845.246
24397.602	18845.842
24395.820	18852.093
24389.569	18850.311
24391.351	18844.060
24392.144	18844.286
24397.216	18826.495
24396.423	18826.269
24398.205	18820.018
24399.277	18820.324
24411.851	18802.331
24411.193	18802.144
24420.432	18769.735
24421.099	18769.925

THE SCHEDULE — *continued*

<i>First column</i>		<i>Second column</i>
The Authority		Protected Area
	24421.929	18766.972
	24382.610	18703.265
	24368.887	18721.703
	24344.347	18753.931
	24311.780	18782.522
	24343.763	18837.028
	24341.939	18833.920
	24337.964	18827.145
	24336.208	18824.152
	24302.709	18786.822
	24265.135	18805.052
	24257.881	18808.571
	24189.831	18833.658
	24191.153	18841.362
	24181.246	18842.146
	24177.361	18838.599
	24174.110	18844.113
	24167.728	18845.865
	24164.987	18841.473
	24125.639	18845.314
	24097.282	18837.723
	24077.606	18825.825
	24055.576	18797.754
	24040.239	18757.480
	24025.637	18715.780
	24008.632	18665.062
	23988.688	18618.672

---



---

 THE SCHEDULE — *continued*

<i>First column</i>	<i>Second column</i>
The Authority	Protected Area
23980.711	18593.285
23950.161	18509.192
23936.172	18478.087
23921.593	18445.856
23897.451	18407.594
23870.711	18369.168
23846.431	18333.283
23824.672	18300.017
23813.847	18283.015
23813.372	18281.982
23802.449	18262.031
23791.907	18233.633
23782.798	18202.398
23782.384	18200.156
23776.966	18170.798
23776.490	18168.781
23778.016	18168.781
23783.693	18168.781
23782.336	18159.169
23780.600	18124.043
23778.573	18073.739
23776.602	18039.091
23775.244	17997.836
23775.844	17973.301
23777.746	17947.890
23781.871	17926.568
23786.806	17909.329

THE SCHEDULE — *continued*

<i>First column</i>		<i>Second column</i>
The Authority		Protected Area
	23793.136	17890.133
	23801.029	17870.953
	23820.180	17824.689
	23834.018	17795.670
	23851.302	17759.267
	23871.593	17718.781
	23880.679	17703.379
	23891.720	17687.690
	23903.851	17674.662
	23918.249	17661.336
	23931.482	17650.186
	23942.615	17642.197
	23954.236	17634.890
	23962.653	17630.962
	23972.159	17626.055
	23988.593	17618.681
	24007.531	17610.204
	24029.578	17599.030
	24040.809	17594.478
	24086.896	17577.678
	24119.171	17577.638
	24150.308	17589.762
	24174.860	17615.486
	24191.364	17663.545
	24207.244	17720.683
	24225.390	17756.686
	24254.481	17799.488



THE SCHEDULE — *continued*

<i>First column</i>	<i>Second column</i>
The Authority	Protected Area
24300.403	17865.611
24320.917	17889.029
24335.964	17911.029
24352.742	17935.901
24364.749	17957.681
24376.575	17985.355
24385.936	18013.857
24392.547	18043.282
24396.523	18069.650
24454.448	18062.024
24453.505	18054.858
24492.568	18049.716
24493.511	18056.881
24566.836	18047.228
24550.224	17921.049
24539.652	17840.747
24532.538	17841.683
24527.396	17802.621
24534.638	17801.667
24524.509	17724.731
24518.925	17725.466
24517.307	17713.172
24522.891	17712.437
24508.063	17599.809
24500.821	17600.762
24495.678	17561.699
24502.920	17560.746

THE SCHEDULE — *continued*

<i>First column</i>		<i>Second column</i>
The Authority		Protected Area
	24477.520	17367.811
	24470.277	17368.764
	24465.135	17329.701
	24471.157	17328.908
	24469.750	17318.220
	24462.625	17319.159
	24461.318	17309.240
	24468.444	17308.301
	24466.011	17289.818
	24459.998	17290.611
	24458.986	17282.930
	24465.491	17282.072
	24460.082	17241.022
	24447.475	17242.683
	24448.049	17247.042
	24450.119	17246.769
	24451.659	17258.452
	24440.956	17259.862
	24439.416	17248.179
	24445.733	17247.347
	24445.259	17243.748
	24438.942	17244.580
	24432.810	17198.042
	24439.132	17197.209
	24438.655	17193.590
	24432.333	17194.423
	24430.795	17182.750

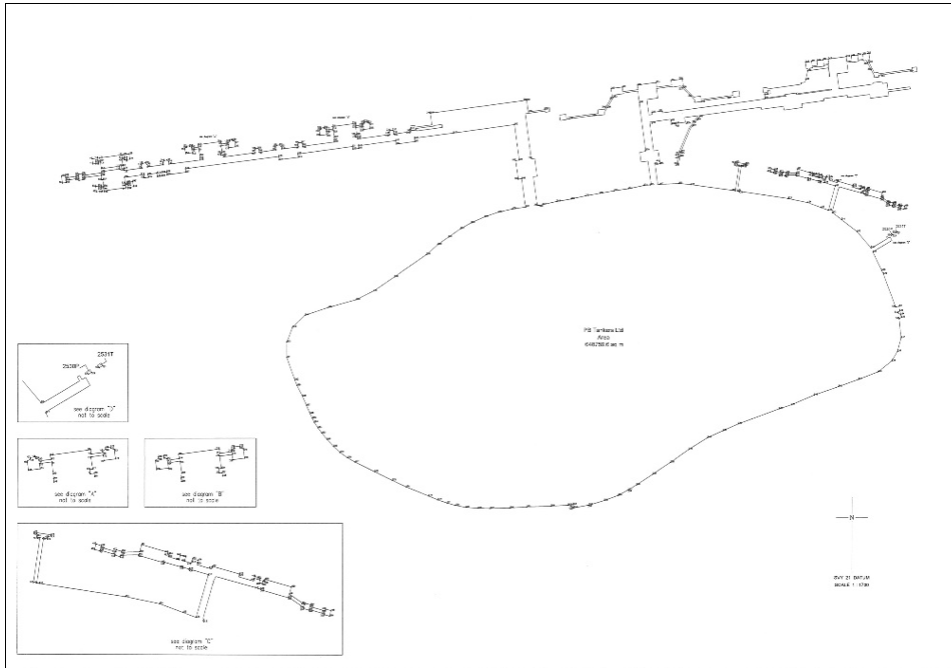
THE SCHEDULE — *continued*

<i>First column</i>	<i>Second column</i>
The Authority	Protected Area
24441.516	17181.338
24443.054	17193.011
24440.910	17193.293
24441.485	17197.661
24455.156	17195.859
24454.877	17193.742
24464.453	17192.480
24459.321	17153.533
24455.286	17154.064
24454.273	17146.378
24458.308	17145.846
24454.746	17118.814
24449.744	17119.473
24448.733	17111.800

to the point of commencement.

The boundaries of “PB TANKERS LTD AT 1 PULAU BUSING SINGAPORE 118363” are more particularly delineated in the Plan set out below.

THE SCHEDULE — *continued*



Made on 29 August 2022.

PANG KIN KEONG  
*Permanent Secretary,*  
*Ministry of Home Affairs,*  
*Singapore.*

[SPF/CPS/C/09/02/02; AG/LEGIS/SL/137B/2020/3 Vol. 1]