
First published in the Government *Gazette*, Electronic Edition, on 27 December 2017 at 5 pm.

No. S 767

PROTECTED AREAS AND
PROTECTED PLACES ACT
(CHAPTER 256)

PROTECTED PLACES (NO. 8) ORDER 2017

ARRANGEMENT OF PARAGRAPHS

Paragraph

1. Citation and commencement
 2. Premises declared to be protected place
The Schedule
-

In exercise of the powers conferred by section 5(1) of the Protected Areas and Protected Places Act, the Minister for Home Affairs makes the following Order:

Citation and commencement

1. This Order is the Protected Places (No. 8) Order 2017 and comes into operation on 28 December 2017.

Premises declared to be protected place

2.—(1) The premises described in the second column of the Schedule are declared to be a protected place for the purposes of the Act.

(2) No person may enter or remain in those premises unless the person —

- (a) is in possession of a pass-card or permit issued by the authority specified in the first column of the Schedule; or
- (b) has the permission of an authorised officer on duty at those premises to enter those premises.

 THE SCHEDULE

<i>First column</i>	<i>Second column</i>
The Authority	Protected Place
General Manager, EIOS 99 Pte Ltd	EIOS 99 PTE LTD, located at 1 Jalan Kilang, #06-00, Singapore 159402.

All that area comprised in Lot 02608X in Mukim No. 1, occupied by “EIOS 99 PTE LTD” containing an area of about 1089.8 square metres and bounded approximately as follows:

Commencing at a point 29722.260 metres North and 25393.170 metres East of the Singapore Land Authority SVY 21 Datum, the boundaries run along successive lines of coordinates approximately as follows:

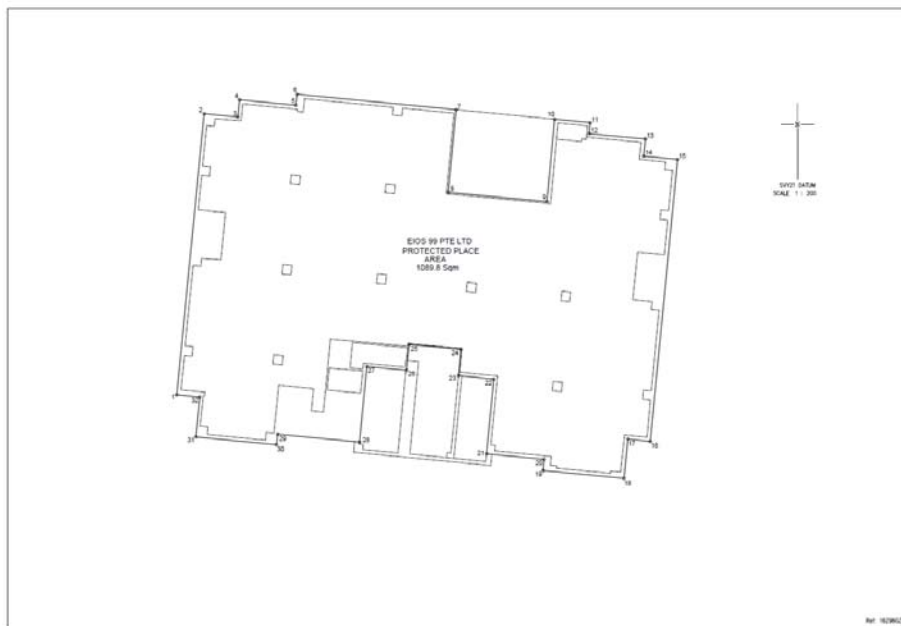
<i>Northing</i>	<i>Easting</i>
29722.260	25393.170
29747.095	25395.585
29746.799	25398.569
29748.324	25398.715
29747.831	25403.689
29748.809	25403.784
29747.448	25417.822
29740.151	25417.130
29739.316	25425.852
29746.605	25426.519
29746.302	25429.654
29745.321	25429.564
29744.864	25434.547
29743.340	25434.388
29743.056	25437.375

 THE SCHEDULE — *continued*

<i>First column</i>	<i>Second column</i>	
The Authority	Protected Place	
	<i>Northing</i>	<i>Easting</i>
	29718.144	25434.963
	29718.354	25432.986
	29714.879	25432.642
	29715.569	25425.496
	29716.559	25425.589
	29717.039	25420.510
	29723.636	25421.154
	29723.968	25418.044
	29726.274	25418.253
	29726.703	25413.682
	29724.432	25413.457
	29724.765	25409.943
	29718.084	25409.310
	29718.786	25402.069
	29717.849	25401.980
	29718.538	25394.857

to the point of commencement.

The boundaries of “EIOS 99 PTE LTD” are more particularly delineated in the Survey Plan No. 16926GZ1 filed in the office of the Chief Surveyor, Singapore, a copy of which is set out below.

THE SCHEDULE — *continued*

Made on 21 December 2017.

PANG KIN KEONG
Permanent Secretary,
Ministry of Home Affairs,
Singapore.

[MHA (PS) 12/2/010 TF 8; AG/LEGIS/SL/256/2015/1 Vol. 5]