

FREE TRADE ZONES ACT
(CHAPTER 114, SECTION 3(1))

FREE TRADE ZONES (DECLARED AREAS) NOTIFICATION

ARRANGEMENT OF PARAGRAPHS

Paragraph

1. Citation
 2. Free trade zones
The Schedules
-

[11th October 1991]

Citation

1. This Notification may be cited as the Free Trade Zones (Declared Areas) Notification.

Free trade zones

2. The areas set out in the First Schedule are hereby declared to be free trade zones.

FIRST SCHEDULE

(1) *Tanjong Pagar Terminal and Keppel Terminal*

All that area occupied by “TANJONG PAGAR TERMINAL AND KEPPEL TERMINAL — FREE TRADE ZONE” containing an area of approximately 1,809,270 square metres and bounded by Telok Blangah Road, Keppel Road, East Coast Parkway, East Lagoon and Keppel Harbour.

The boundary commences at the western-most corner of the aforesaid “TANJONG PAGAR TERMINAL AND KEPPEL TERMINAL — FREE TRADE ZONE” which point’s co-ordinates are North 27,288.561 metres and East 26,954.409 metres of the Singapore Land Authority SVY 21 Datum and runs approximately as follows:

<i>Northing</i>	<i>Easting</i>
27,288.561	26,954.409
27,315.175	26,954.984

FIRST SCHEDULE — *continued*

<i>Northing</i>	<i>Easting</i>
27,318.082	26,954.964
27,337.162	26,963.051
27,351.153	26,965.498
27,358.912	26,970.195
27,361.688	26,971.963
27,372.455	26,981.430
27,373.654	26,983.049
27,377.914	26,981.702
27,378.740	26,981.327
27,381.150	26,981.504
27,383.022	26,985.973
27,379.215	26,987.591
27,379.415	26,988.301
27,385.683	26,994.936
27,393.209	27,004.604
27,398.341	27,012.101
27,400.033	27,015.329
27,413.454	27,014.838
27,428.445	27,041.817
27,431.563	27,080.573
27,464.607	27,140.062
27,468.036	27,138.109
27,468.228	27,138.316
27,469.051	27,137.767
27,560.185	27,301.680
27,600.507	27,283.438
27,629.183	27,316.940
27,613.965	27,329.420

FIRST SCHEDULE — *continued*

<i>Northing</i>	<i>Easting</i>
27,639.169	27,359.872
27,654.806	27,346.576
27,661.056	27,353.573
27,662.665	27,353.236
27,665.939	27,350.309
27,667.169	27,351.686
27,675.586	27,339.379
27,678.822	27,334.349
27,685.652	27,323.978
27,693.994	27,314.921
27,697.606	27,311.572
27,706.728	27,313.336
27,720.638	27,319.210
27,725.603	27,322.394
27,732.500	27,328.193
27,740.425	27,336.280
27,754.637	27,351.036
27,774.702	27,371.864
27,788.815	27,386.922
27,798.287	27,394.565
27,809.373	27,399.588
27,821.365	27,401.671
27,833.495	27,400.681
27,838.901	27,404.912
27,866.770	27,437.288
27,876.639	27,445.861
27,884.427	27,451.484
27,911.673	27,469.999

FIRST SCHEDULE — *continued*

<i>Northing</i>	<i>Easting</i>
27,929.623	27,486.251
27,970.834	27,522.963
27,993.227	27,544.716
28,016.965	27,570.518
28,034.198	27,589.873
28,084.594	27,644.829
28,097.615	27,660.711
28,105.347	27,670.773
28,120.318	27,696.919
28,137.003	27,715.711
28,149.812	27,727.424
28,165.873	27,746.083
28,168.250	27,751.162
28,169.435	27,752.830
28,177.733	27,758.767
28,199.879	27,786.439
28,200.750	27,787.858
28,207.214	27,795.396
28,209.233	27,798.145
28,244.092	27,842.131
28,256.447	27,862.379
28,260.953	27,866.487
28,269.949	27,876.876
28,277.875	27,888.550
28,271.185	27,896.661
28,251.772	27,920.335
28,254.900	27,923.267
28,237.421	27,944.783

FIRST SCHEDULE — *continued*

<i>Northing</i>	<i>Easting</i>
28,224.528	27,952.073
28,216.033	27,961.828
28,217.055	27,981.487
28,217.382	27,988.546
28,219.238	28,041.733
28,293.862	28,039.157
28,296.737	28,123.789
28,292.988	28,123.971
28,293.382	28,134.752
28,293.826	28,147.079
28,293.173	28,147.103
28,293.181	28,148.450
28,293.888	28,148.515
28,294.433	28,162.779
28,295.205	28,180.232
28,295.388	28,183.873
28,295.663	28,188.835
28,296.103	28,195.700
28,296.384	28,199.704
28,297.097	28,209.756
28,297.371	28,216.992
28,297.719	28,225.824
28,296.491	28,228.070
28,297.177	28,237.342
28,295.977	28,238.054
28,294.545	28,238.756
28,292.492	28,239.203
28,290.449	28,239.461

FIRST SCHEDULE — *continued*

<i>Northing</i>	<i>Easting</i>
28,280.507	28,239.855
28,279.301	28,242.334
28,277.559	28,244.773
28,275.173	28,246.566
28,272.261	28,247.480
28,251.124	28,248.225
28,251.192	28,253.853
28,241.668	28,254.206
28,206.440	28,255.380
28,213.594	28,446.423
28,214.010	28,447.397
28,214.038	28,448.623
28,213.688	28,449.334
28,213.870	28,454.811
28,214.442	28,454.787
28,214.493	28,456.136
28,213.919	28,456.155
28,220.074	28,625.930
28,220.274	28,625.923
28,220.316	28,627.268
28,220.099	28,627.276
28,220.351	28,633.383
28,222.773	28,695.635
28,236.930	28,695.411
28,260.479	28,694.641
28,266.305	28,688.483
28,290.861	28,687.516
28,292.144	28,716.138

FIRST SCHEDULE — *continued*

<i>Northing</i>	<i>Easting</i>
28,281.504	28,716.614
28,281.578	28,719.446
28,276.450	28,719.571
28,276.695	28,728.098
28,278.482	28,760.958
28,279.741	28,770.186
28,283.471	28,781.374
28,291.727	28,796.185
28,293.378	28,798.955
28,294.678	28,801.702
28,304.683	28,830.095
28,143.519	28,902.777
28,143.519	28,907.018
28,143.793	28,911.505
28,144.630	28,915.387
28,146.665	28,918.799
28,149.861	28,922.202
28,153.709	28,924.848
28,158.030	28,926.615
28,188.743	28,912.941
28,203.801	28,947.700
28,176.248	28,960.033
28,179.347	28,966.446
28,182.609	28,973.196
28,189.526	28,988.965
28,190.334	28,990.765
28,187.192	28,992.133
28,162.044	29,003.283

FIRST SCHEDULE — *continued*

<i>Northing</i>	<i>Easting</i>
28,158.511	29,007.277
28,156.829	29,009.839
28,155.694	29,012.622
28,155.289	29,015.499
28,155.275	29,021.272
28,157.888	29,028.168
28,160.179	29,030.537
28,182.444	29,052.492
28,206.369	29,075.512
28,309.629	29,175.792
28,310.138	29,176.432
28,314.891	29,185.470
28,319.268	29,193.790
28,322.874	29,204.336
28,323.369	29,221.990
28,323.790	29,236.872
28,324.192	29,251.881
28,324.923	29,279.653
28,325.327	29,296.683
28,323.684	29,308.619
28,321.863	29,321.685
28,320.386	29,332.813
28,318.867	29,344.285
28,317.647	29,353.526
28,316.331	29,362.723
28,312.790	29,398.566
28,312.187	29,404.489
28,309.771	29,415.319

FIRST SCHEDULE — *continued*

<i>Northing</i>	<i>Easting</i>
28,307.354	29,426.153
28,304.939	29,436.987
28,298.788	29,436.506
28,299.193	29,432.366
28,282.821	29,418.139
28,228.771	29,478.082
28,234.171	29,483.259
28,253.850	29,501.045
28,277.983	29,474.291
28,297.214	29,452.972
28,298.156	29,446.858
28,299.942	29,444.978
28,303.939	29,444.453
28,301.832	29,456.225
28,299.941	29,467.512
28,298.479	29,476.076
28,296.616	29,487.504
28,295.294	29,495.946
28,293.933	29,504.895
28,292.127	29,516.752
28,290.768	29,525.688
28,289.633	29,534.551
28,288.583	29,546.403
28,288.035	29,555.331
28,287.783	29,564.309
28,287.909	29,576.266
28,288.240	29,585.294
28,288.778	29,594.177

FIRST SCHEDULE — *continued*

<i>Northing</i>	<i>Easting</i>
28,289.957	29,606.242
28,291.121	29,615.187
28,292.530	29,624.104
28,294.830	29,635.814
28,296.857	29,644.655
28,299.093	29,653.331
28,302.434	29,664.741
28,305.202	29,673.364
28,308.153	29,681.860
28,311.909	29,691.227
28,316.751	29,702.180
28,320.679	29,710.418
28,324.761	29,718.301
28,330.347	29,728.768
28,334.631	29,736.812
28,339.071	29,744.630
28,344.998	29,755.060
28,349.449	29,762.919
28,353.847	29,770.663
28,359.742	29,781.089
28,364.208	29,788.978
28,368.630	29,796.768
28,374.561	29,807.247
28,379.015	29,815.090
28,383.481	29,822.974
28,389.232	29,833.618
28,393.251	29,841.690
28,396.958	29,849.819

FIRST SCHEDULE — *continued*

<i>Northing</i>	<i>Easting</i>
28,401.728	29,860.845
28,405.176	29,869.131
28,408.404	29,877.492
28,411.556	29,886.317
28,415.369	29,897.567
28,417.918	29,906.246
28,420.767	29,916.774
28,420.658	29,917.023
28,382.205	30,005.821
28,381.488	30,005.599
28,370.914	30,029.930
27,341.159	30,031.019
27,341.122	29,995.624
27,341.447	29,991.642
27,285.471	29,930.011
27,112.430	30,086.125
27,111.065	30,086.485
27,110.223	30,086.136
27,109.371	30,085.124
27,110.173	30,084.349
27,030.637	29,996.286
27,031.421	29,995.579
27,031.529	29,995.161
27,030.853	29,994.363
27,029.943	29,991.865
27,029.860	29,988.866
27,031.261	29,986.731
27,033.963	29,984.310

FIRST SCHEDULE — *continued*

<i>Northing</i>	<i>Easting</i>
27,033.990	29,983.887
27,288.386	29,754.485
27,532.704	29,533.896
27,701.845	29,381.276
27,705.730	29,377.742
27,569.127	29,226.270
27,569.506	29,225.869
27,563.658	29,219.389
27,277.850	29,446.321
27,220.347	29,491.732
27,218.182	29,492.958
27,215.737	29,493.562
27,213.356	29,493.486
27,210.806	29,492.610
27,210.631	29,492.835
27,122.366	29,410.332
27,122.578	29,410.121
27,121.056	29,407.724
27,120.565	29,405.151
27,121.014	29,402.551
27,122.474	29,400.290
27,176.869	29,341.473
27,792.537	28,681.009
27,793.534	28,673.972
27,794.609	28,664.939
27,795.666	28,652.547
27,796.732	28,639.004
27,797.102	28,625.791

FIRST SCHEDULE — *continued*

<i>Northing</i>	<i>Easting</i>
27,796.841	28,612.939
27,769.631	27,860.065
27,764.032	27,854.695
27,720.028	27,776.643
27,657.202	27,665.809
27,652.809	27,657.386
27,652.547	27,657.533
27,512.874	27,411.859
27,404.963	27,220.955
27,293.460	27,024.529
27,292.603	27,022.266
27,288.662	27,007.212
27,288.344	27,004.825
27,288.511	26,975.614

to the point of commencement. The boundary of “TANJONG PAGAR TERMINAL AND KEPPEL TERMINAL — FREE TRADE ZONE” is delineated in Plan I set out in the Second Schedule.

(2) Jurong Port (including Pulau Damar Laut)

All that area comprised in Lots 765L(PT), 766C, 1263L, 1552P, 1553T, 1554A, 3854P, 1555K, 1625T, 1821A, 2177C, 2523P(PT), 2525A, 2528X, 4177K(PT), 2852P, 2901X(PT), 3543T, 3782P, 3845X, 3850C(PT), 3855T, 3856A, 3857K, 4112P, 4113T, 3984C(PT), 768W(PT), 477A(PT) and 3601T(PT) including the bridge in the Port area crossing Selat Damar Laut in MK 6, 37 Jurong Port Road, Singapore 619110 occupied by “JURONG PORT (including PULAU DAMAR LAUT) — FREE TRADE ZONE” containing an area of about 1261779 square metres and bounded approximately as follows:

Commencing at the north eastern-most corner of the aforesaid “JURONG PORT (including PULAU DAMAR LAUT) — FREE TRADE ZONE” which point is 32,094.37 metres North and 16,049.21 metres East of the Singapore Land Authority SVY 21 Datum, and the boundaries run along successive lines of co-ordinates approximately as follows:

FIRST SCHEDULE — *continued*

<i>Northing</i>	<i>Easting</i>
32,094.37	16,049.21
31,969.93	16,091.82
31,952.43	16,097.88
31,551.18	16,235.20
31,399.66	16,287.19
31,395.77	16,276.08
31,396.76	16,275.16
31,396.65	16,275.04
31,383.51	16,286.64
31,383.62	16,286.77
31,383.91	16,286.56
31,384.20	16,286.96
31,377.35	16,287.73
31,381.61	16,284.00
31,382.22	16,284.63
31,381.95	16,284.87
31,382.12	16,285.07
31,395.28	16,273.52
31,395.17	16,273.40
31,394.31	16,274.14
31,383.75	16,268.97
31,426.59	16,181.51
31,437.40	16,160.92
31,592.45	15,844.58
31,678.97	15,668.20
31,796.65	15,528.44
31,796.76	15,528.10
31,908.32	15,396.27

FIRST SCHEDULE — *continued*

<i>Northing</i>	<i>Easting</i>
31,970.60	15,322.33
32,041.35	15,238.36
32,160.83	15,096.64
32,303.10	14,927.84
32,306.37	14,652.61
32,306.90	14,577.46
32,315.31	14,577.46
32,315.60	14,552.75
32,312.43	14,552.71
32,312.58	14,544.72
32,320.47	14,544.84
32,320.40	14,552.82
32,317.32	14,552.78
32,317.05	14,577.46
32,335.04	14,577.46
32,355.24	14,544.69
32,347.49	14,524.68
32,353.92	14,520.72
32,355.31	14,516.92
32,221.03	14,515.43
32,204.56	14,515.25
32,189.83	14,515.13
32,178.13	14,515.01
32,162.63	14,516.79
32,151.32	14,520.87
32,141.23	14,526.21
32,126.15	14,534.82
32,117.46	14,539.71

FIRST SCHEDULE — *continued*

<i>Northing</i>	<i>Easting</i>
32,110.84	14,543.88
32,092.49	14,554.73
32,087.00	14,560.95
32,082.34	14,571.35
32,085.42	14,576.45
32,084.98	14,576.70
32,083.97	14,575.01
32,083.04	14,575.59
32,083.23	14,575.95
32,079.20	14,578.36
32,072.59	14,593.07
32,081.52	14,607.71
32,081.12	14,607.95
32,080.04	14,606.22
32,079.07	14,606.81
32,079.25	14,607.24
32,075.78	14,609.34
32,074.78	14,689.37
32,064.97	14,715.25
32,055.44	14,736.73
32,049.36	14,748.42
32,096.33	14,788.10
31,967.92	14,940.49
31,803.19	15,135.79
31,655.18	15,311.37
31,504.06	15,490.66
31,467.70	15,460.10
31,463.32	15,467.44

FIRST SCHEDULE — *continued*

<i>Northing</i>	<i>Easting</i>
31,455.12	15,477.37
31,448.59	15,480.19
31,443.64	15,481.41
31,436.86	15,480.61
31,430.36	15,477.65
31,399.17	15,454.77
31,368.52	15,433.74
31,348.46	15,433.51
31,348.15	15,460.25
31,346.55	15,605.53
31,333.31	15,605.48
31,333.14	15,621.89
31,334.69	15,621.85
31,334.63	15,623.86
31,333.16	15,623.88
31,332.99	15,640.29
31,335.48	15,640.36
31,335.37	15,647.84
31,332.86	15,647.85
31,332.64	15,672.68
31,333.44	15,672.74
31,333.47	15,676.12
31,332.55	15,676.16
31,332.22	15,678.59
31,332.14	15,680.32
31,332.34	15,682.71
31,334.91	15,682.71
31,335.07	15,690.03

FIRST SCHEDULE — *continued*

<i>Northing</i>	<i>Easting</i>
31,327.63	15,690.26
31,327.45	15,682.87
31,329.78	15,682.79
31,329.66	15,679.41
31,330.06	15,676.69
31,330.33	15,647.86
31,327.89	15,647.72
31,327.97	15,640.28
31,330.43	15,640.26
31,330.81	15,605.46
31,317.61	15,605.20
31,319.41	15,439.65
31,321.30	15,267.24
31,323.03	15,106.63
31,325.17	14,911.23
31,326.32	14,805.80
31,327.25	14,715.73
31,328.46	14,607.85
31,329.87	14,486.05
31,485.95	14,486.79
31,698.41	14,489.08
31,905.85	14,491.25
32,016.93	14,493.27
32,112.65	14,494.10
32,169.60	14,490.40
32,201.98	14,484.09
32,220.53	14,483.43
32,220.56	14,493.06

FIRST SCHEDULE — *continued*

<i>Northing</i>	<i>Easting</i>
32,221.31	14,492.98
32,355.56	14,494.52
32,367.30	14,491.73
32,373.16	14,490.22
32,373.73	14,489.48
32,374.16	14,485.82
32,374.32	14,484.42
32,375.11	14,475.19
32,377.25	14,474.27
32,377.48	14,470.68
32,378.53	14,467.09
32,381.04	14,464.99
32,383.20	14,464.56
32,383.42	14,472.23
32,383.25	14,472.67
32,382.97	14,473.20
32,380.69	14,474.77
32,379.65	14,476.11
32,378.78	14,477.39
32,377.41	14,480.04
32,376.70	14,482.95
32,376.12	14,485.88
32,376.06	14,497.56
32,381.33	14,498.32
32,389.64	14,502.76
32,393.18	14,505.76
32,395.86	14,509.05
32,397.53	14,512.00

FIRST SCHEDULE — *continued*

<i>Northing</i>	<i>Easting</i>
32,478.60	14,512.54
32,478.52	14,514.21
32,522.22	14,514.49
32,532.34	14,695.88
32,543.72	14,732.50
32,729.00	14,734.57
32,727.44	14,910.09
32,725.64	15,040.94
32,725.77	15,040.96
32,725.54	15,060.09
32,713.27	15,057.62
32,688.70	15,052.81
32,598.44	15,034.84
32,563.89	15,027.82
32,529.44	15,020.90
32,502.54	15,015.53
32,493.84	15,013.78
32,494.23	15,011.40
32,479.34	15,011.26
32,464.75	15,014.51
32,441.80	15,009.88
32,438.20	15,009.13
32,404.34	15,002.50
32,396.31	15,042.78
32,410.74	15,046.55
32,409.17	15,054.11
32,404.04	15,053.10
32,388.57	15,071.20

FIRST SCHEDULE — *continued*

<i>Northing</i>	<i>Easting</i>
32,399.78	15,080.79
32,411.16	15,090.25
32,424.54	15,101.50
32,434.22	15,109.60
32,449.47	15,116.10
32,467.29	15,123.00
32,483.17	15,129.27
32,492.74	15,131.67
32,499.74	15,134.50
32,506.31	15,137.55
32,510.42	15,139.79
32,507.56	15,143.17
32,503.29	15,148.26
32,460.85	15,198.16
32,459.04	15,200.29
32,463.81	15,204.29
32,461.12	15,207.48
32,475.16	15,219.17
32,480.96	15,221.54
32,482.64	15,222.64
32,522.80	15,251.88
32,521.44	15,256.78
32,475.00	15,311.20
32,474.90	15,313.74
32,475.40	15,315.17
32,471.55	15,319.54
32,401.96	15,401.97
32,412.53	15,411.13

FIRST SCHEDULE — *continued*

<i>Northing</i>	<i>Easting</i>
32,411.89	15,411.88
32,500.47	15,486.48
32,528.13	15,509.80
32,528.80	15,510.97
32,478.60	15,543.50
32,456.89	15,556.22
32,441.37	15,562.49
32,433.49	15,565.30
32,427.98	15,566.56
32,416.98	15,568.45
32,410.50	15,569.47
32,396.45	15,569.75
32,388.14	15,569.67
32,379.69	15,568.47
32,371.41	15,567.29
32,365.86	15,566.09
32,355.14	15,562.80
32,347.62	15,560.40
32,346.39	15,559.57
32,331.47	15,552.15
32,326.56	15,549.66
32,326.03	15,549.46
32,325.42	15,550.45
32,321.57	15,547.76
32,324.38	15,544.29
32,321.02	15,541.47
32,319.52	15,540.25
32,316.59	15,544.21

FIRST SCHEDULE — *continued*

<i>Northing</i>	<i>Easting</i>
32,306.62	15,537.08
32,299.04	15,546.10
32,120.10	15,395.57
32,119.93	15,395.74
32,118.76	15,394.91
32,119.12	15,394.49
32,107.62	15,385.63
32,089.54	15,370.39
32,030.93	15,440.14
32,162.39	15,551.17
32,217.01	15,596.82
32,218.23	15,595.99
32,232.45	15,607.87
32,199.76	15,646.75
32,241.29	15,664.45
32,205.27	15,749.12
32,169.19	15,832.91
32,099.89	15,803.50
32,011.92	15,765.84
31,965.98	15,746.19
31,886.67	15,844.39
31,958.23	16,053.54
32,081.40	16,011.36
32,081.73	16,012.30
32,081.59	16,012.34
32,093.96	16,048.51
32,094.11	16,048.46

FIRST SCHEDULE — *continued*

to the point of commencement. The boundary of “JURONG PORT (including PULAU DAMAR LAUT) — FREE TRADE ZONE” is delineated in Plan II set out in the Second Schedule.

(3) *Sembawang Wharves*

All that area occupied by “SEMBAWANG WHARVES — FREE TRADE ZONE” containing an area of approximately 312,500 square metres and bounded by Fiji Road, Jamaica Road, Sembawang Shipyard, H M Dockyard, Stores Road, Stores Basin, Sembawang Park and Deptford Road.

The boundary commences at the western-most corner of the aforesaid “SEMBAWANG WHARVES — FREE TRADE ZONE” which point’s co-ordinates are North 49,342.274 metres and East 27,216.569 metres of the Singapore Land Authority SVY 21 Datum and runs approximately as follows:

<i>Northing</i>	<i>Easting</i>
49,342.274	27,216.569
49,383.623	27,239.331
49,386.861	27,240.369
49,406.042	27,251.743
49,408.954	27,256.526
49,439.994	27,314.658
49,470.282	27,370.933
49,478.734	27,386.622
49,485.217	27,398.838
49,490.240	27,408.064
49,489.903	27,407.978
49,486.849	27,412.203
49,495.094	27,426.829
49,506.771	27,447.666
49,522.803	27,476.531
49,558.642	27,542.619
49,584.126	27,589.381
49,563.317	27,625.639

FIRST SCHEDULE — *continued*

<i>Northing</i>	<i>Easting</i>
49,545.591	27,656.885
49,524.579	27,693.334
49,512.606	27,714.162
49,506.148	27,720.383
49,498.448	27,723.726
49,490.251	27,723.287
49,367.320	27,654.402
49,327.834	27,633.993
49,324.491	27,634.413
49,324.480	27,634.615
49,321.503	27,639.675
49,319.456	27,642.940
49,318.621	27,644.951
49,306.532	27,666.063
49,309.041	27,667.707
49,362.714	27,698.153
49,352.393	27,716.567
49,345.243	27,729.151
49,337.805	27,742.036
49,336.487	27,741.436
49,335.211	27,742.644
49,332.835	27,746.785
49,335.447	27,748.622
49,328.286	27,761.364
49,323.858	27,769.138
49,299.424	27,811.861
49,298.193	27,814.483
49,298.921	27,816.904

FIRST SCHEDULE — *continued*

<i>Northing</i>	<i>Easting</i>
49,294.152	27,826.134
49,418.344	27,896.971
49,436.914	27,907.607
49,432.845	27,915.070
49,428.228	27,923.827
49,409.221	27,957.193
49,402.618	27,953.432
49,397.173	27,962.990
49,403.777	27,966.751
49,394.125	27,983.695
49,331.379	27,947.978
49,310.869	27,936.303
49,270.023	27,913.052
49,144.539	27,840.798
49,135.868	27,855.999
49,120.928	27,847.477
49,060.531	27,953.363
49,204.882	28,035.533
49,490.843	28,198.423
49,523.064	28,216.814
49,523.813	28,217.620
49,524.347	28,218.694
49,534.917	28,277.248
49,532.348	28,277.649
49,531.656	28,282.298
49,531.189	28,292.387
49,530.623	28,302.471
49,528.379	28,312.319

FIRST SCHEDULE — *continued*

<i>Northing</i>	<i>Easting</i>
49,526.356	28,322.520
49,524.826	28,332.200
49,524.009	28,341.565
49,512.554	28,332.037
49,505.888	28,331.358
49,502.035	28,329.033
49,494.968	28,331.228
49,464.222	28,319.241
49,459.292	28,316.802
49,456.660	28,316.198
49,443.757	28,311.595
49,411.690	28,318.489
49,391.358	28,325.782
49,320.824	28,294.648
49,287.256	28,262.325
49,216.070	28,194.101
49,206.827	28,190.555
49,190.406	28,184.503
49,170.057	28,176.685
49,119.571	28,157.523
49,039.203	28,127.767
49,038.474	28,125.064
49,034.967	28,121.225
49,019.994	28,114.291
48,997.663	28,103.972
48,986.153	28,096.359
48,946.197	28,086.729
48,891.087	28,037.195

FIRST SCHEDULE — *continued*

<i>Northing</i>	<i>Easting</i>
48,890.310	28,015.309
48,890.263	28,012.609
48,918.562	27,977.621
48,958.734	27,896.637
48,959.885	27,894.195
48,960.848	27,891.672
48,968.830	27,868.403
49,031.306	27,761.988
49,089.903	27,718.284
49,093.244	27,712.477
49,065.978	27,696.904
49,078.106	27,676.425
49,094.024	27,685.852
49,101.529	27,688.623
49,107.770	27,687.208
49,125.633	27,656.414
49,127.151	27,654.182
49,130.745	27,650.018
49,132.107	27,647.687
49,132.977	27,645.131
49,133.531	27,642.488
49,144.421	27,623.487
49,151.382	27,611.341
49,146.732	27,605.203
49,114.757	27,587.394
49,116.313	27,585.187
49,154.850	27,517.487
49,180.186	27,473.456

FIRST SCHEDULE — *continued*

<i>Northing</i>	<i>Easting</i>
49,191.550	27,463.665
49,195.567	27,459.344
49,200.601	27,451.763
49,203.512	27,443.565
49,207.536	27,431.836
49,214.886	27,419.105
49,236.372	27,382.089
49,258.798	27,374.738
49,299.275	27,306.430
49,318.316	27,273.429
49,332.545	27,235.404

to the point of commencement. The boundary of “SEMBAWANG WHARVES — FREE TRADE ZONE” is delineated in Plan III set out in the Second Schedule.

(4) [*Deleted by S 568/2009*]

(5) *Changi Airport Cargo Terminal Complex*

All that area comprised in part of Lot Nos. 1288Cpt, 3363Kpt, 4288Tpt, 4289Apt, 4290Ppt and 4294Npt and Lot Nos. 1246V and 1273L occupied by “CHANGI AIRPORT CARGO TERMINAL COMPLEX — FREE TRADE ZONE” containing an area of about 474,784 square metres and bounded approximately as follows:

The boundary commences at the eastern-most corner of “CHANGI AIRPORT CARGO TERMINAL COMPLEX — FREE TRADE ZONE” which point is 40,701.9 metres North and 46,632.8 metres East of the Survey Department origin of co-ordinates, the boundary runs along successive lines of fence of bearings and distances as follows:

<i>Bearing</i>	<i>Distance in metres</i>
196° 02'	8.6
197° 00'	7.2
196° 26'	29.7
196° 40'	28.4

FIRST SCHEDULE — *continued*

<i>Bearing</i>	<i>Distance in metres</i>
196° 20'	91.2
196° 28'	47.8
202° 56'	38.8
203° 00'	26.8

to a point where it meets a line, thence along that and other successive lines of bearings and distances as follows:

<i>Bearing</i>	<i>Distance in metres</i>
219° 22'	35.5
254° 02'	7.2
239° 14'	6.1
227° 28'	4.4
217° 35'	4.5
203° 08'	7.7
184° 37'	7.9
219° 22'	15

to a point where it meets a fence, thence along successive lines of fence of bearings and distances as follows:

<i>Bearing</i>	<i>Distance in metres</i>
289° 45'	8.9
283° 44'	14.8
281° 53'	20.6
282° 06'	22.9
357° 15'	14.1
356° 41'	20.2
292° 28'	16.1
263° 47'	15.1
249° 19'	12

FIRST SCHEDULE — *continued*

<i>Bearing</i>	<i>Distance in metres</i>
237° 43'	9.1
226° 17'	9.1
218° 14'	6
203° 05'	667.1
113° 11'	79.5
112° 59'	63.4

to a point where it meets a line, thence along the line on a bearing of 203° 01' for a distance of 118.1 metres to a point where it meets a fence, thence along successive lines of fence of bearings and distances as follows:

<i>Bearing</i>	<i>Distance in metres</i>
113° 04'	82.4
203° 03'	205.4

to a point where it meets a line, thence along that and other successive lines of bearings and distances as follows:

<i>Bearing</i>	<i>Distance in metres</i>
203° 03'	19.4
113° 01'	9.6
203° 01'	288.5
293° 02'	34
203° 02'	22
293° 02'	46.3
203° 02'	75.3
293° 01'	49.2
23° 08'	49.3

to a point where it meets a fence, thence along successive lines of fence of bearings and distances as follows:

FIRST SCHEDULE — *continued*

<i>Bearing</i>	<i>Distance in metres</i>
23° 18'	26.5
292° 53'	35.1

to meet a line, thence along the line of a bearing 286° 56' and distance of 2 metres to the corner of a wall, thence along a line of bearing 293° 01' and distance of 90.7 metres which follows closely a series of walls and fence, thence along that and other successive lines of wall of bearings and distances as follows:

<i>Bearing</i>	<i>Distance in metres</i>
203° 01'	93.4
293° 04'	152.5
23° 04'	10.6
113° 04'	14
23° 04'	57.1
293° 04'	2
23° 04'	3.4
293° 04'	12.1
23° 04'	22.2
293° 01'	2.2

to a point where it meets a line, thence along that and other successive lines of bearings and distances as follows:

<i>Bearing</i>	<i>Distance in metres</i>
23° 02'	577.1
23° 02'	129.5
23° 02'	713.4
113° 02'	2.5

to a point where it meets a fence, thence along successive lines of fence of bearings and distances as follows:

<i>Bearing</i>	<i>Distance in metres</i>
111° 20'	3

FIRST SCHEDULE — *continued*

<i>Bearing</i>	<i>Distance in metres</i>
113° 57'	11.2
112° 52'	77.7
203° 05'	20
112° 56'	62.7
23° 02'	146
86° 31'	5.6
23° 10'	21.4

to a point where it meets a line, thence along successive lines of fence of bearings and distances as follows:

<i>Bearing</i>	<i>Distance in metres</i>
19° 45'	2.5
354° 08'	2.5
113° 04'	11.4
23° 02'	121.8

to a point where it meets a fence, thence along successive lines of fence of bearings and distances as follows:

<i>Bearing</i>	<i>Distance in metres</i>
23° 02'	57
20° 25'	6.1
13° 07'	6
5° 10'	6
356° 55'	6
350° 40'	3.1
347° 01'	3
342° 49'	3
342° 10'	24
342° 18'	21

FIRST SCHEDULE — *continued*

<i>Bearing</i>	<i>Distance in metres</i>
349° 04'	2.9
4° 17'	2.9
19° 41'	2.9
34° 03'	2.9
48° 36'	2.9
63° 14'	2.9
72° 01'	12
72° 15'	21.6
147° 20'	27.2
160° 03'	36.9
160° 08'	38
141° 40'	29.1
165° 25'	30
171° 43'	29.6
171° 41'	29.9

to the point of commencement. The boundary of “CHANGI AIRPORT CARGO TERMINAL COMPLEX — FREE TRADE ZONE” is delineated in Plan V set out in the Second Schedule.

(6) Brani Terminal

All that area occupied by “BRANI TERMINAL — FREE TRADE ZONE” containing an area of approximately 861,550 square metres and bounded by Keppel Channel and Selat Sengkir.

The boundary commences at the northwestern-most corner of the aforesaid “BRANI TERMINAL — FREE TRADE ZONE” which point’s co-ordinates are North 27,282.754 metres and East 26,954.037 metres of the Singapore Land Authority SVY 21 Datum and runs approximately as follows:

<i>Northing</i>	<i>Easting</i>
27,282.671	26,974.813
27,143.905	26,971.892

FIRST SCHEDULE — *continued*

<i>Northing</i>	<i>Easting</i>
27,098.134	26,973.362
27,054.962	26,979.408
27,004.854	26,992.499
26,965.480	27,007.922
27,346.614	27,676.713
27,348.670	27,684.214
27,372.258	28,306.732
27,367.908	28,318.637
26,715.732	29,018.546
26,711.540	29,018.687
26,703.631	29,011.312
26,568.339	28,738.715
26,625.258	28,716.742
26,640.101	28,711.007
26,649.390	28,700.920
26,510.506	28,410.419
26,510.031	28,409.534
26,684.759	28,222.272
26,734.009	28,268.294
26,843.412	28,150.950
26,858.152	28,152.300
26,879.854	28,152.007
26,906.040	28,092.816
26,918.169	28,079.219
26,980.779	28,032.001
27,001.006	28,014.544
27,003.125	28,012.535
27,005.077	28,010.363

FIRST SCHEDULE — *continued*

<i>Northing</i>	<i>Easting</i>
27,006.413	28,007.876
27,007.614	28,005.101
27,009.514	27,999.595
27,010.299	27,996.778
27,012.020	27,987.919
27,012.625	27,984.956
27,015.805	27,979.841
27,017.559	27,977.380
27,019.459	27,975.031
27,021.509	27,972.952
27,023.786	27,971.127
27,028.521	27,967.577
27,030.889	27,966.053
27,035.134	27,963.379
27,047.805	27,955.510
27,060.791	27,947.970
27,071.501	27,942.308
27,087.484	27,933.997
27,098.340	27,928.621
27,114.201	27,920.078
27,138.605	27,903.120
27,159.632	27,882.831
27,192.922	27,838.645
27,194.952	27,727.938
27,208.999	27,709.952
27,195.263	27,699.415
27,170.613	27,681.265
27,172.023	27,679.296

FIRST SCHEDULE — *continued*

<i>Northing</i>	<i>Easting</i>
27,168.680	27,676.734
27,167.810	27,673.945
27,155.978	27,662.569
27,161.009	27,652.201
27,161.403	27,649.708
27,147.469	27,642.903
27,135.424	27,627.167
27,118.144	27,632.846
27,112.386	27,633.479
27,109.451	27,631.953
27,059.091	27,639.291
26,985.829	27,648.927
26,947.180	27,654.087
26,947.299	27,656.260
26,927.086	27,658.074
26,916.067	27,662.260
26,920.548	27,673.584
26,920.189	27,683.253
26,914.099	27,685.491
26,913.937	27,687.058
26,913.491	27,688.569
26,912.139	27,691.221
26,910.730	27,693.843
26,909.217	27,696.407
26,906.532	27,700.359
26,903.935	27,703.505
26,899.559	27,707.726
26,841.036	27,749.978

FIRST SCHEDULE — *continued*

<i>Northing</i>	<i>Easting</i>
26,786.606	27,744.569
26,784.233	27,751.868
26,782.890	27,751.460
26,783.129	27,750.671
26,778.261	27,749.137
26,778.041	27,749.881
26,764.045	27,745.374
26,764.829	27,742.870
26,763.810	27,740.898
26,761.233	27,740.080
26,766.284	27,724.136
26,753.655	27,719.951
26,751.593	27,720.684
26,749.897	27,720.069
26,627.574	27,676.337
26,666.293	27,575.810
26,594.677	27,548.619
26,593.337	27,548.991
26,576.685	27,542.690
26,599.144	27,484.123
26,616.362	27,490.598
26,624.662	27,488.309
26,631.078	27,481.968
26,636.879	27,472.832
26,636.573	27,470.327
26,631.044	27,467.291
26,642.331	27,446.767
26,647.921	27,449.867

FIRST SCHEDULE — *continued*

<i>Northing</i>	<i>Easting</i>
26,648.975	27,448.635
26,653.155	27,440.078
26,660.638	27,421.505
26,670.114	27,393.015
26,685.407	27,356.027
26,691.076	27,336.822
26,696.656	27,317.590
26,701.472	27,298.462
26,704.458	27,278.560
26,707.946	27,258.842
26,712.614	27,239.369
26,714.657	27,229.759
26,740.345	27,188.240
26,760.431	27,158.096
26,782.017	27,129.633
26,808.932	27,097.493
26,836.945	27,068.912
26,858.297	27,049.555
26,883.156	27,030.838
26,923.059	27,005.782
26,955.682	26,989.603
26,998.826	26,971.958
27,049.137	26,959.172
27,097.206	26,952.664
27,144.382	26,951.034
27,282.754	26,954.037

to the point of commencement. The boundary of “BRANI TERMINAL — FREE TRADE ZONE” is delineated in Plan VI set out in the Second Schedule.

FIRST SCHEDULE — *continued*(7) *Keppel Distripark*

All that area occupied by “KEPPEL DISTRIPARK — FREE TRADE ZONE” containing an area of approximately 17.1 hectares and bounded by Keppel Road, Kampong Bahru Road and Ayer Rajah Expressway.

The boundary commences at the northern-most corner of the aforesaid “KEPPEL DISTRIPARK — FREE TRADE ZONE” which point’s adopted co-ordinates are North 28,573.4 metres and East 27,517.9 metres. The point of commencement is 1,426.6 metres South and 2,482.1 metres West of the Survey Department’s origin (30,000 metres North, 30,000 metres East) of co-ordinates and runs approximately as follows:

<i>Bearings</i>	<i>Distance in metres</i>
132° 20’	15.0
144° 19’	1.7
133° 37’	253.3
133° 55’	109.0
181° 31’	5.5
196° 08’	10.9
220° 06’	18.9
218° 40’	22.6
227° 17’	234.1
227° 29’	78.6
227° 01’	114.4
230° 14’	105.7
228° 59’	10.3
140° 14’	2.2
229° 51’	2.1
316° 55’	2.2
229° 58’	103.4
221° 10’	12.7
281° 34’	14.7
316° 12’	36.7

FIRST SCHEDULE — *continued*

<i>Bearings</i>	<i>Distance in metres</i>
324° 38'	9.9
333° 42'	7.7
340° 56'	5.9
344° 43'	85.1
351° 23'	34.3
01° 59'	29.4
09° 36'	58.6
05° 42'	6.0
352° 41'	6.5
343° 21'	4.6
335° 45'	4.8
328° 55'	2.5
316° 45'	2.2
303° 40'	7.6
292° 07'	10.7
336° 16'	7.5
66° 10'	23.3
64° 56'	15.6
62° 22'	23.3
66° 41'	21.2
65° 12'	11.8
55° 15'	10.9
48° 38'	11.8
43° 23'	27.8
49° 01'	27.8
49° 06'	22.2
49° 11'	21.2
58° 14'	2.9

FIRST SCHEDULE — *continued*

<i>Bearings</i>	<i>Distance in metres</i>
68° 51'	2.7
79° 27'	2.8
89° 58'	2.7
100° 37'	2.8
105° 57'	15.0
122° 01'	12.0
227° 15'	2.7
136° 57'	11.9
47° 15'	2.5
137° 15'	92.6
47° 15'	81.7
317° 15'	108.8
322° 28'	3.6
348° 42'	5.8
342° 55'	2.9
349° 28'	2.6
356° 49'	3.0
03° 38'	2.5
10° 33'	3.1
17° 45'	2.5
24° 42'	3.1
31° 25'	2.4
38° 58'	3.4
45° 51'	2.4
49° 05'	56.4
45° 43'	4.5
42° 13'	5.8
37° 45'	12.0

FIRST SCHEDULE — *continued*

<i>Bearings</i>	<i>Distance in metres</i>
47° 08'	7.9
30° 41'	9.1
22° 51'	10.1
13° 48'	13.0
07° 25'	9.5
359° 49'	9.8
353° 56'	6.4
347° 13'	6.4
354° 00'	23.2
335° 08'	29.5
343° 24'	36.3
342° 39'	6.6
353° 46'	5.5
05° 44'	8.0
17° 26'	5.5
28° 32'	7.9
42° 15'	20.4

to the point of commencement and are delineated in Plan VII set out in the Second Schedule.

(8) *Keppel Distripark Linkbridge*

All that area across Keppel Road occupied by “KEPPEL DISTRIPARK LINKBRIDGE — FREE TRADE ZONE” containing an area of approximately 1,126.114 square metres and bounded by Keppel Distripark and Keppel Terminal.

The boundary commences at the northern-most point of the aforesaid “KEPPEL DISTRIPARK LINKBRIDGE — FREE TRADE ZONE” which point’s co-ordinates are North 27,903.074 metres and East 27,364.688 metres of the Singapore Land Authority SVY 21 Datum and runs approximately as follows:

<i>Northing</i>	<i>Easting</i>
27,903.074	27,364.688

FIRST SCHEDULE — *continued*

<i>Northing</i>	<i>Easting</i>
27,860.798	27,403.783
27,859.669	27,405.011
27,858.099	27,406.980
27,857.359	27,408.039
27,856.265	27,409.812
27,855.543	27,411.158
27,854.925	27,412.460
27,854.369	27,413.796
27,853.909	27,415.066
27,853.586	27,416.084
27,852.899	27,418.881
27,852.641	27,420.413
27,852.587	27,420.812
27,838.901	27,404.912
27,838.828	27,404.855
27,841.129	27,402.248
27,843.772	27,399.725
27,849.253	27,394.688
27,893.477	27,353.816

to the point of commencement. The boundary of “KEPPEL DISTRI PARK LINKBRIDGE — FREE TRADE ZONE” is delineated in Plan VIII set out in the Second Schedule.

(9) *Pasir Panjang Terminal*

All that area occupied by “PASIR PANJANG TERMINAL — FREE TRADE ZONE” containing an area of approximately 3,420,874 square metres and bounded by West Coast Ferry Road, Harbour Drive and East Jurong Fairway.

The boundary commences at the north-west corner of the aforesaid “PASIR PANJANG TERMINAL — FREE TRADE ZONE” which point’s co-ordinates are North 30,310.960 metres and East 19,958.452 metres of the Singapore Land Authority SVY 21 Datum and runs approximately as follows:

FIRST SCHEDULE — *continued*

<i>Northing</i>	<i>Easting</i>
30,310.960	19,958.452
30,379.671	19,999.428
30,381.413	20,006.311
30,342.539	20,071.497
30,339.635	20,091.384
30,351.646	20,107.502
30,546.550	20,223.557
30,551.091	20,240.407
29,906.306	21,320.624
29,869.758	21,365.527
29,821.876	21,398.075
29,817.741	21,400.081
29,785.465	21,421.246
29,759.801	21,450.075
29,733.778	21,493.712
29,729.466	21,492.073
29,727.543	21,495.291
29,689.185	21,472.434
29,682.480	21,476.318
29,662.431	21,480.608
29,654.066	21,482.524
29,653.109	21,482.220
29,650.346	21,481.723
29,650.450	21,482.235
29,631.330	21,486.135
29,630.348	21,485.807
29,624.709	21,487.028
29,622.976	21,483.066

FIRST SCHEDULE — *continued*

<i>Northing</i>	<i>Easting</i>
29,617.831	21,487.275
29,613.691	21,492.476
29,611.201	21,498.090
29,610.071	21,504.127
29,610.517	21,509.957
29,612.301	21,515.525
29,615.343	21,520.407
29,617.460	21,522.826
29,622.191	21,526.419
29,652.877	21,544.645
29,675.925	21,558.468
29,676.280	21,558.676
29,665.669	21,576.687
29,665.949	21,576.976
29,664.318	21,579.712
29,670.700	21,588.051
29,671.148	21,598.540
29,534.343	21,827.941
29,531.511	21,826.251
29,533.076	21,820.182
29,530.381	21,809.517
29,539.109	21,807.310
29,537.738	21,801.880
29,540.650	21,801.144
29,537.930	21,790.382
29,539.969	21,789.866
29,537.004	21,778.135
29,563.642	21,732.080

FIRST SCHEDULE — *continued*

<i>Northing</i>	<i>Easting</i>
29,560.167	21,710.639
29,556.630	21,696.631
29,559.497	21,695.661
29,563.525	21,691.779
29,563.137	21,691.541
29,566.543	21,685.904
29,571.593	21,677.302
29,577.882	21,666.673
29,577.105	21,663.675
29,576.812	21,663.745
29,572.225	21,645.593
29,578.306	21,644.062
29,577.489	21,640.817
29,536.871	21,650.882
29,522.222	21,651.559
29,513.636	21,654.323
29,510.741	21,656.273
29,507.470	21,658.212
29,407.108	21,830.001
29,411.735	21,832.843
29,408.390	21,838.506
29,403.955	21,835.785
29,402.728	21,837.875
29,405.950	21,850.841
29,413.074	21,855.226
29,412.472	21,856.315
29,408.958	21,862.754
29,407.754	21,864.930

FIRST SCHEDULE — *continued*

<i>Northing</i>	<i>Easting</i>
29,405.016	21,863.329
29,400.361	21,871.056
29,387.562	21,863.290
29,294.250	22,016.307
29,293.755	22,021.456
29,294.024	22,023.880
29,294.690	22,026.293
29,295.784	22,028.550
29,297.252	22,030.559
29,299.254	22,032.451
29,300.607	22,033.431
29,369.985	22,074.900
29,371.123	22,075.500
29,373.366	22,076.360
29,375.750	22,076.835
29,378.156	22,076.943
29,379.047	22,076.876
29,380.781	22,076.638
29,346.487	22,134.127
29,345.773	22,133.627
29,344.717	22,134.930
29,345.325	22,135.467
29,336.599	22,145.544
29,284.400	22,193.816
29,267.055	22,209.479
29,204.069	22,171.384
29,209.648	22,162.115
29,218.414	22,147.586

FIRST SCHEDULE — *continued*

<i>Northing</i>	<i>Easting</i>
29,209.270	22,141.469
29,201.829	22,136.403
29,224.649	22,098.086
29,243.049	22,067.195
29,265.630	22,029.284
29,290.639	21,987.317
29,312.212	21,951.098
29,333.126	21,916.048
29,327.739	21,912.731
29,300.554	21,889.125
29,270.427	21,863.182
29,266.683	21,865.611
29,234.426	21,846.447
29,204.585	21,828.657
29,176.664	21,812.013
29,144.503	21,792.842
29,115.347	21,775.442
29,057.401	21,740.932
29,028.902	21,723.769
29,028.714	21,721.644
29,028.489	21,719.292
29,027.678	21,716.628
29,026.134	21,714.386
29,017.639	21,709.369
29,016.925	21,710.628
29,015.883	21,710.242
29,012.160	21,716.351
29,011.264	21,717.854

FIRST SCHEDULE — *continued*

<i>Northing</i>	<i>Easting</i>
27,859.493	21,030.855
29,219.594	18,748.791
29,747.865	19,063.811
29,809.217	19,453.740
28,973.974	20,856.100
29,565.507	21,208.277

to the point of commencement. The boundary of “PASIR PANJANG TERMINAL — FREE TRADE ZONE” is delineated in Plan IX set out in the Second Schedule.

(10) *Airport Logistics Park of Singapore*

All that area comprised in Lots 4359P, 4350A, 4200K, 4565M, 4112N, 4269V, 4285W, 4837A, 4360W, 4836T, 4348K, 4110A, 4111K, 4274T and 4793V and part of Lot 4795T in Mukim No. 31 (Changi) occupied by “AIRPORT LOGISTICS PARK OF SINGAPORE — FREE TRADE ZONE” containing an area of approximately 279,934 square metres and bounded approximately as follows:

The boundary commences at a point 39,618.821 metres North and 47,009.438 metres East of the Singapore Land Authority SVY 21 Datum, and the boundary runs along successive lines of coordinates approximately as follows:

<i>Northing</i>	<i>Easting</i>
39,618.821	47,009.438
39,630.450	46,982.441
39,634.425	46,976.753
39,667.671	46,899.575
39,679.222	46,875.541
39,697.089	46,833.814
39,699.892	46,826.689
39,659.770	46,802.861
39,597.978	46,776.916
39,596.165	46,776.337
39,557.253	46,770.025

FIRST SCHEDULE — *continued*

<i>Northing</i>	<i>Easting</i>
39,547.140	46,829.407
39,537.283	46,887.284
39,372.684	46,886.865
39,372.684	46,698.167
39,382.052	46,688.847
39,550.101	46,689.276
39,552.306	46,602.631
39,622.438	46,601.920
39,727.283	46,600.248
39,836.055	46,598.533
39,912.374	46,597.249
39,949.172	46,596.663
39,995.433	46,595.914
40,005.139	46,595.757
40,032.456	46,530.991
40,098.627	46,532.368
40,159.117	46,533.627
40,158.701	46,553.635
40,306.451	46,556.711
40,317.183	46,556.312
40,329.723	46,554.414
40,341.953	46,550.202
40,349.596	46,546.432
40,377.291	46,563.015
40,379.618	46,559.653
40,379.849	46,559.324
40,381.513	46,560.398
40,384.714	46,555.203

FIRST SCHEDULE — *continued*

<i>Northing</i>	<i>Easting</i>
40,383.598	46,554.236
40,384.280	46,538.642
40,385.012	46,531.052
40,386.420	46,523.556
40,388.495	46,516.218
40,391.218	46,509.095
40,393.291	46,504.331
40,398.362	46,506.497
40,401.929	46,509.243
40,404.904	46,512.486
40,408.025	46,517.730
40,410.007	46,524.656
40,412.266	46,528.359
40,418.337	46,538.234
40,425.188	46,541.418
40,409.989	46,548.977
40,409.013	46,567.738
40,422.294	46,575.928
40,418.478	46,582.213
40,420.317	46,583.401
40,419.780	46,584.813
40,447.777	46,601.448
40,586.115	46,636.271
40,588.748	46,637.144
40,591.077	46,638.428
40,593.632	46,641.419
40,590.221	46,642.392
40,574.729	46,647.104

FIRST SCHEDULE — *continued*

<i>Northing</i>	<i>Easting</i>
40,559.501	46,652.713
40,460.282	46,692.191
40,448.519	46,696.843
40,431.325	46,703.688
40,316.237	46,749.466
40,245.504	46,777.601
40,133.253	46,822.239
40,049.894	46,855.429
40,041.118	46,858.923
39,971.414	46,886.673
39,831.263	46,942.473
39,812.662	46,895.761
39,770.167	46,912.672
39,757.544	46,940.212
39,767.619	46,965.658

to the point of commencement, but excludes these areas delineated by the following coordinates:

Area (1)

<i>Northing</i>	<i>Easting</i>
39,435.664	46,765.028
39,435.664	46,773.028
39,420.424	46,773.028
39,420.424	46,765.028

Area (2)

<i>Northing</i>	<i>Easting</i>
39,499.084	46,713.443
39,499.084	46,719.443

FIRST SCHEDULE — *continued*

<i>Northing</i>	<i>Easting</i>
39,497.084	46,719.443
39,497.084	46,713.443
Area (3)	
<i>Northing</i>	<i>Easting</i>
39,498.234	46,771.138
39,498.234	46,773.138
39,496.234	46,773.138
39,496.234	46,771.138

The boundary of “AIRPORT LOGISTICS PARK OF SINGAPORE — FREE TRADE ZONE” is delineated in Plan X set out in the Second Schedule.

[S 727/2015 wef 01/12/2015]

(11) *Pasir Panjang Terminal (Phases 3 & 4)*

All that area occupied by “PASIR PANJANG TERMINAL (PHASES 3 & 4) — FREE TRADE ZONE” containing an area of approximately 2,456,438 square metres and bounded approximately as follows:

The boundary commences at the north-west corner of the aforesaid “PASIR PANJANG TERMINAL (PHASES 3 & 4) — FREE TRADE ZONE” which point of commencement is 29,011.264 metres North and 21,717.854 metres East of the Singapore Land Authority SVY 21 Datum, and the boundary runs along successive lines of co-ordinates approximately as follows:

<i>Northing</i>	<i>Easting</i>
29,011.264	21,717.854
29,012.160	21,716.351
29,015.883	21,710.242
29,016.925	21,710.628
29,017.639	21,709.369
29,026.134	21,714.386
29,027.678	21,716.628
29,028.489	21,719.292

FIRST SCHEDULE — *continued*

<i>Northing</i>	<i>Easting</i>
29,028.714	21,721.644
29,028.902	21,723.769
29,057.401	21,740.932
29,115.347	21,775.442
29,144.503	21,792.842
29,176.664	21,812.013
29,204.585	21,828.657
29,234.426	21,846.447
29,266.683	21,865.611
29,270.427	21,863.182
29,300.554	21,889.125
29,327.739	21,912.731
29,333.126	21,916.048
29,312.212	21,951.098
29,290.639	21,987.317
29,269.364	22,023.015
29,265.630	22,029.284
29,243.049	22,067.195
29,224.649	22,098.086
29,201.829	22,136.403
29,209.270	22,141.469
29,218.414	22,147.586
29,222.146	22,150.102
29,204.892	22,179.398
29,180.287	22,220.587
29,178.722	22,223.078
29,177.055	22,225.696
29,175.468	22,228.168

FIRST SCHEDULE — *continued*

<i>Northing</i>	<i>Easting</i>
29,173.795	22,230.574
29,172.072	22,233.062
29,170.336	22,235.561
29,168.648	22,237.965
29,166.888	22,240.319
29,165.081	22,242.708
29,163.185	22,245.030
29,161.286	22,247.351
29,132.166	22,281.163
29,126.257	22,287.869
29,120.315	22,294.601
29,114.358	22,301.397
29,064.008	22,359.130
29,057.995	22,366.075
29,054.107	22,370.618
29,046.369	22,379.625
29,043.159	22,384.063
29,036.320	22,395.736
29,030.131	22,406.122
28,939.515	22,558.028
28,933.749	22,568.649
28,929.401	22,576.548
28,923.804	22,587.169
28,918.374	22,597.900
28,913.191	22,608.697
28,908.040	22,619.508
28,899.581	22,638.627
28,893.798	22,652.523

FIRST SCHEDULE — *continued*

<i>Northing</i>	<i>Easting</i>
28,888.199	22,666.463
28,882.886	22,680.560
28,877.845	22,694.568
28,873.173	22,708.842
28,868.655	22,723.177
28,864.374	22,737.629
28,860.345	22,752.093
28,856.721	22,766.543
28,852.682	22,784.098
28,849.498	22,798.770
28,846.622	22,813.445
28,844.114	22,828.275
28,841.786	22,843.109
28,839.783	22,858.030
28,837.779	22,872.837
28,835.325	22,887.643
28,832.377	22,902.403
28,829.050	22,916.973
28,825.202	22,931.528
28,820.932	22,945.843
28,816.384	22,960.068
28,811.654	22,974.398
28,806.970	22,988.657
28,802.259	23,002.914
28,797.439	23,017.644
28,788.668	23,033.375
28,783.094	23,043.412
28,776.966	23,057.060

FIRST SCHEDULE — *continued*

<i>Northing</i>	<i>Easting</i>
28,770.512	23,070.578
28,763.359	23,083.775
28,761.866	23,086.303
28,760.329	23,088.832
28,759.016	23,090.958
28,757.129	23,093.310
28,755.057	23,095.443
28,752.631	23,097.254
28,750.051	23,098.697
28,747.252	23,099.776
28,744.326	23,100.537
28,741.349	23,101.013
28,735.355	23,101.851
28,731.841	23,102.223
28,645.471	23,050.554
28,610.395	23,109.330
28,629.164	23,120.531
28,655.636	23,160.644
28,685.415	23,178.415
28,669.571	23,204.964
28,635.538	23,184.654
28,607.902	23,142.779
28,595.021	23,135.092
28,503.653	23,288.194
28,563.653	23,324.018
28,560.322	23,329.600
28,597.645	23,351.884
28,535.898	23,455.351

FIRST SCHEDULE — *continued*

<i>Northing</i>	<i>Easting</i>
28,494.130	23,430.424
28,464.847	23,405.858
28,441.683	23,392.035
28,400.256	23,461.453
28,427.090	23,477.466
28,341.820	23,620.794
28,328.067	23,619.999
28,235.996	23,774.460
27,904.506	23,576.635
27,902.328	23,580.285
26,394.500	22,680.447
26,858.325	21,903.227
28,363.965	22,801.758
28,982.213	21,765.775

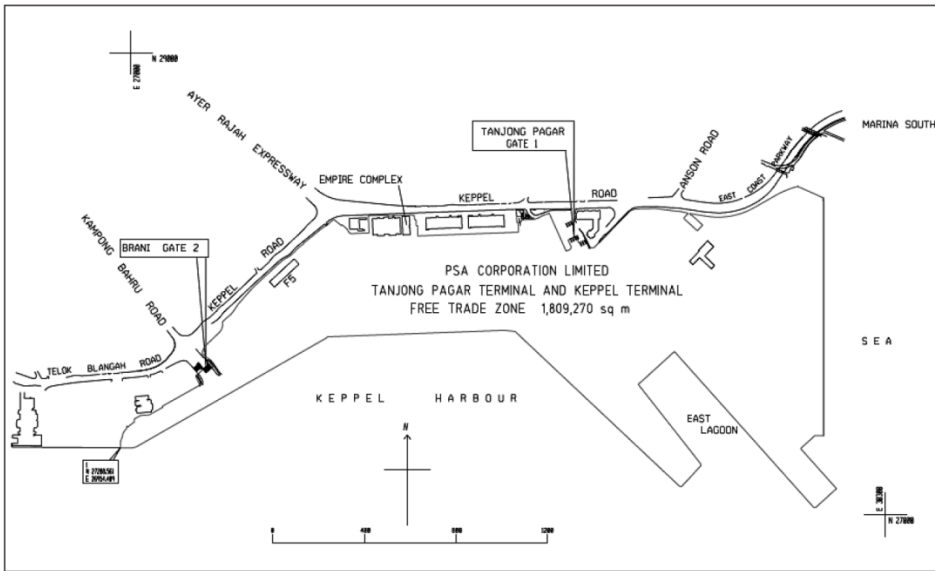
to the point of commencement. The boundary of “PASIR PANJANG TERMINAL (PHASES 3 & 4) — FREE TRADE ZONE” is delineated in Plan XI set out in the Second Schedule.

SECOND SCHEDULE

PLAN I

TANJONG PAGAR TERMINAL AND KEPPEL TERMINAL — FREE
TRADE ZONE

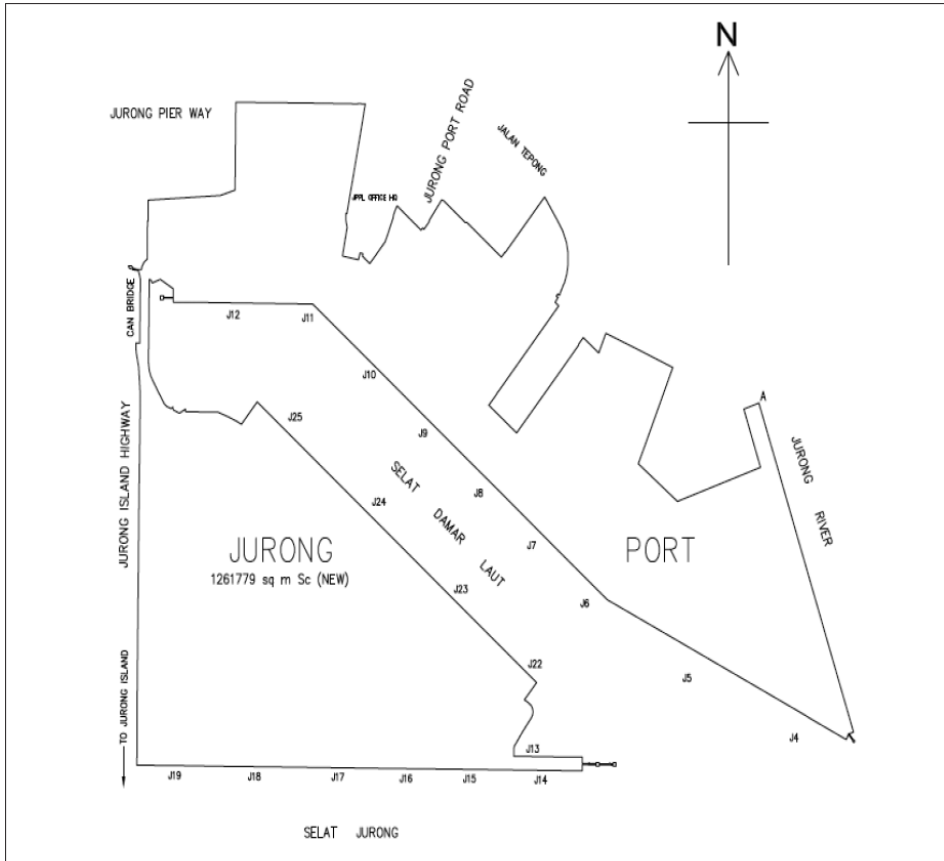
SECOND SCHEDULE — continued



PLAN II

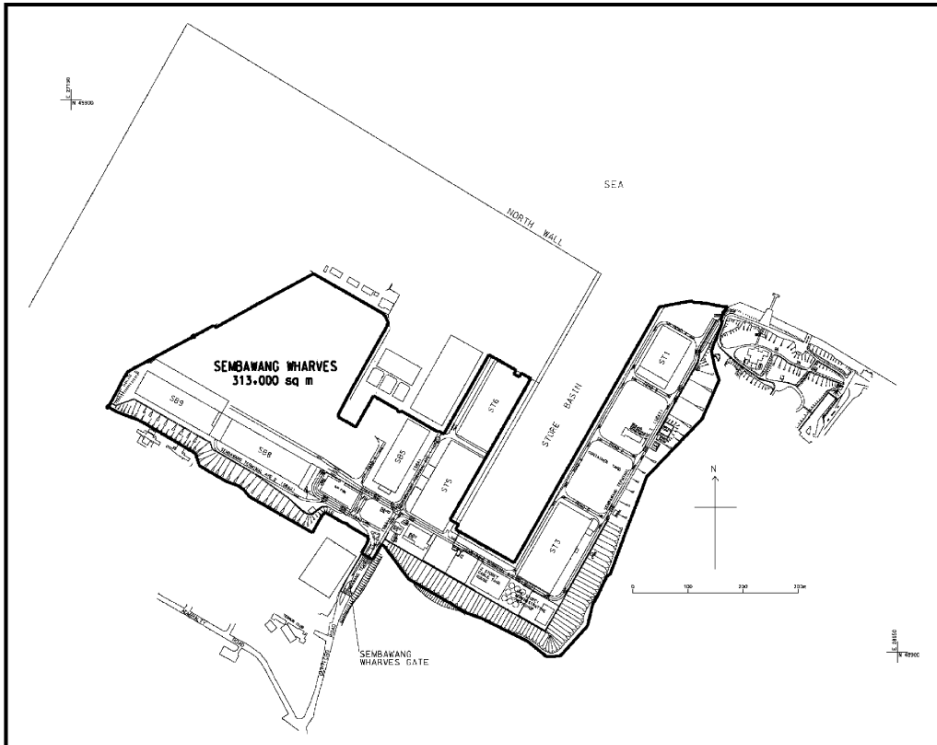
JURONG PORT (INCLUDING PULAU DAMAR LAUT) — FREE TRADE ZONE

SECOND SCHEDULE — *continued*



PLAN III
SEMBAWANG WHARVES — FREE TRADE ZONE

SECOND SCHEDULE — *continued*



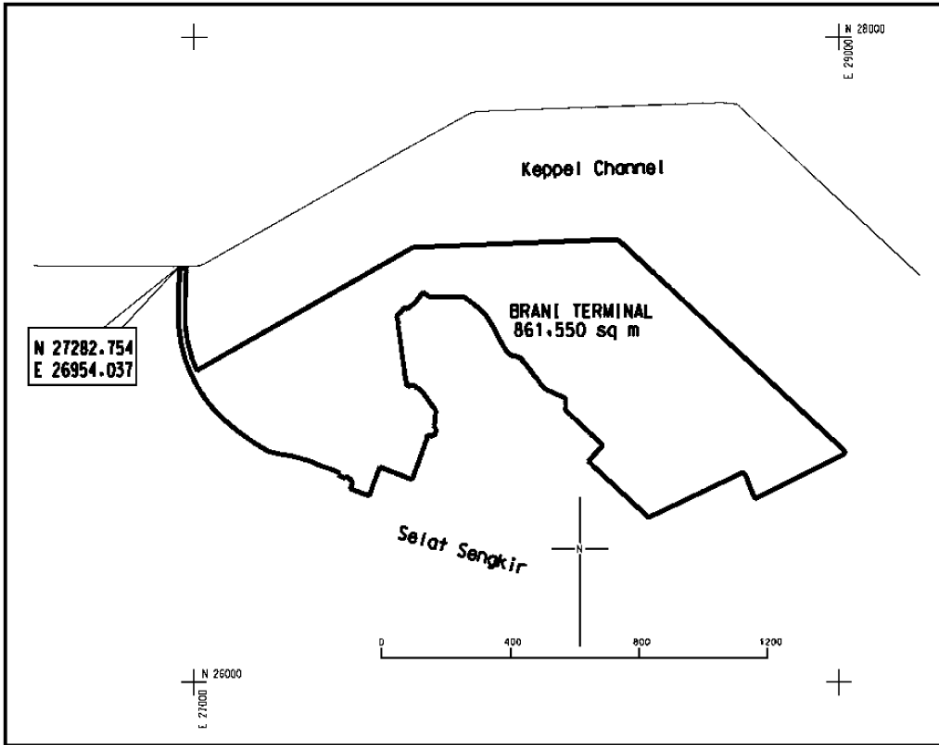
Plan IV

[Deleted by S 568/2009]

PLAN V

CHANGI AIRPORT CARGO
TERMINAL COMPLEX — FREE TRADE ZONE

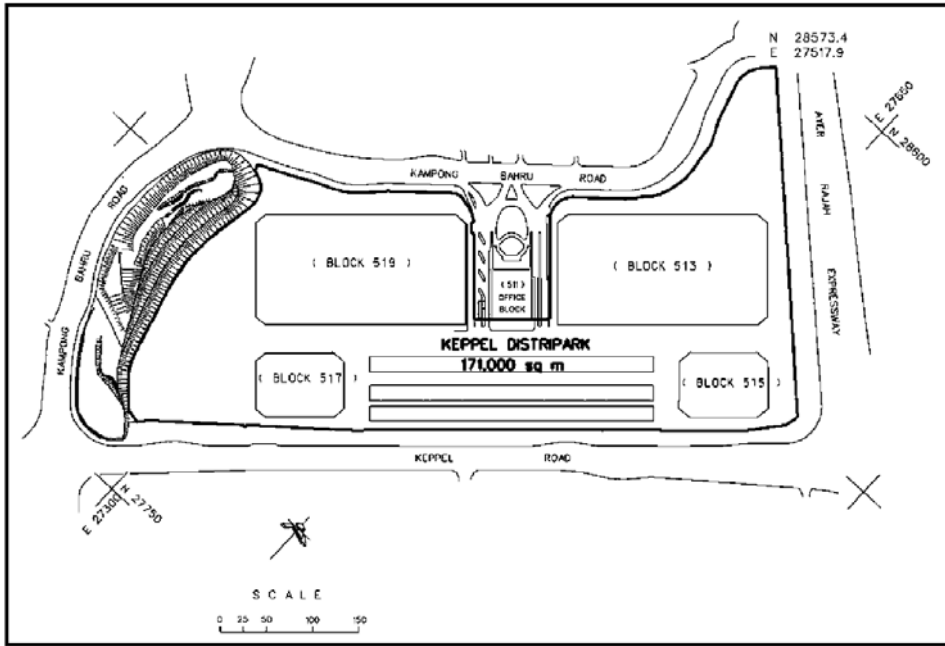
SECOND SCHEDULE — *continued*



PLAN VII

KEPPEL DISTRI PARK — FREE TRADE ZONE

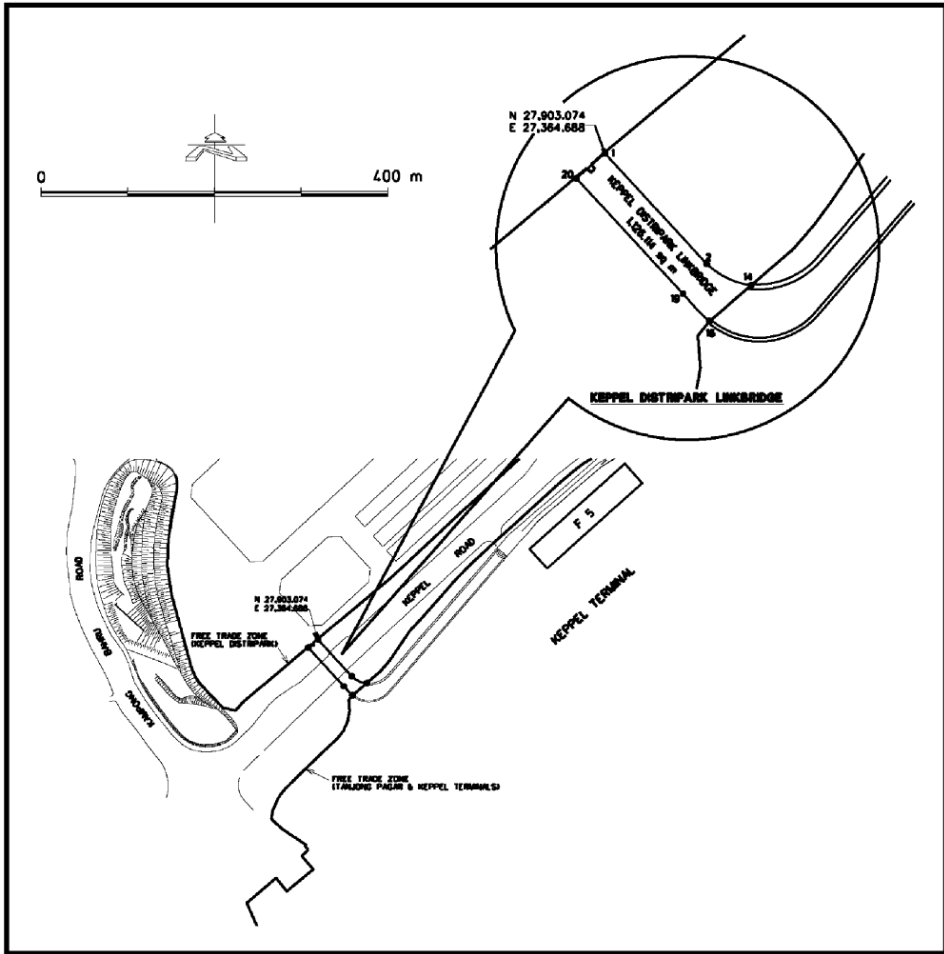
SECOND SCHEDULE — continued



PLAN VIII

KEPPEL DISTRIPARK LINKBRIDGE — FREE TRADE ZONE

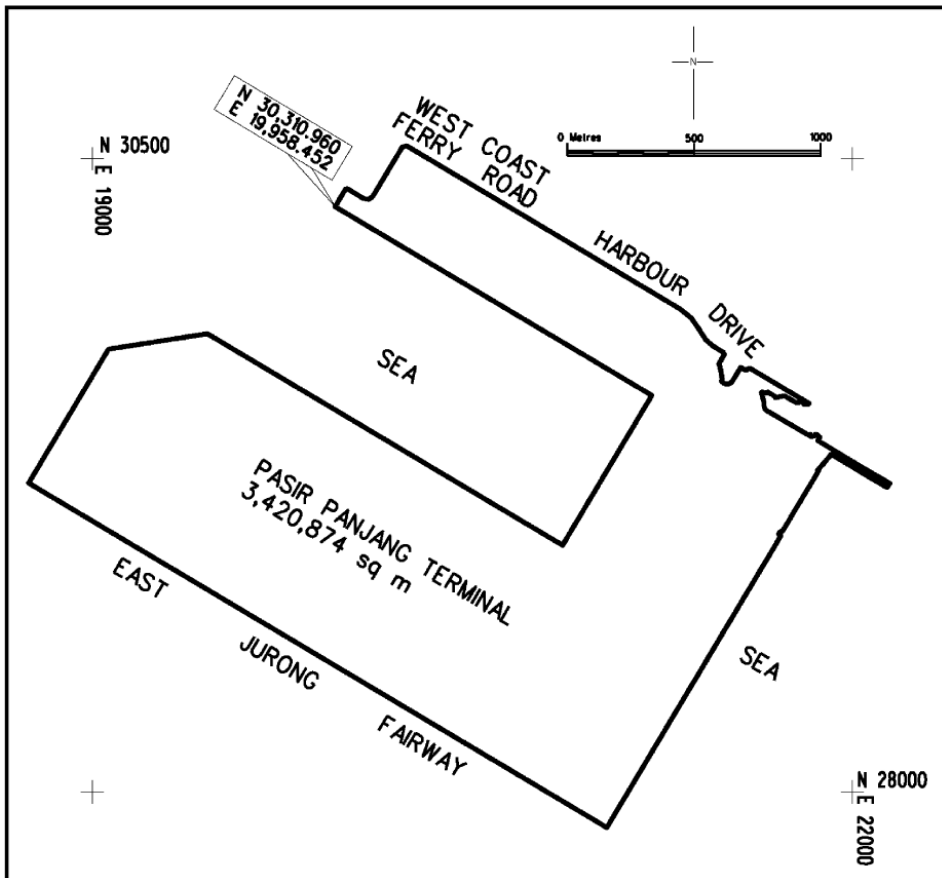
SECOND SCHEDULE — *continued*



PLAN IX

PASIR PANJANG TERMINAL — FREE TRADE ZONE

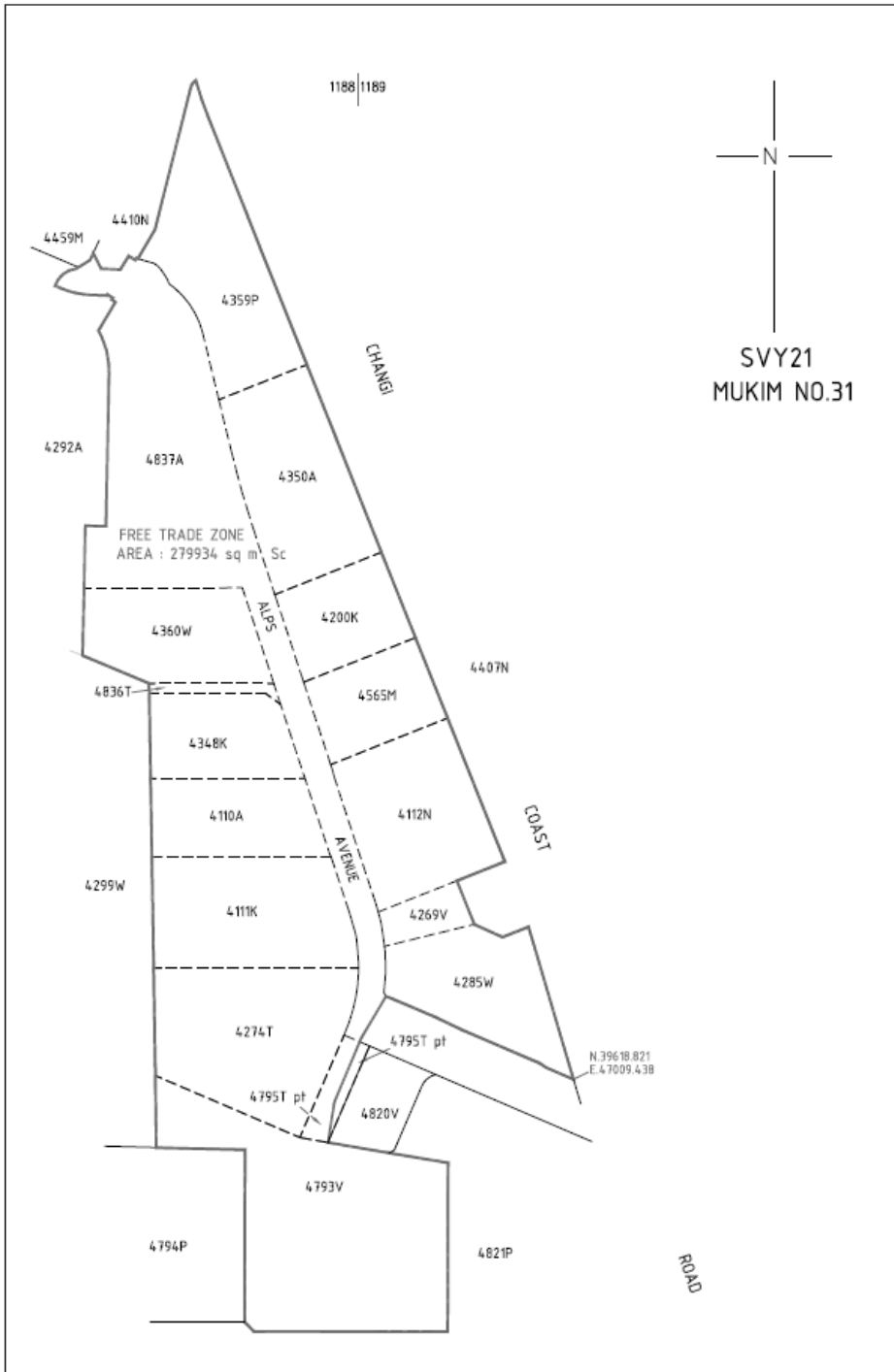
SECOND SCHEDULE — continued



PLAN X

AIRPORT LOGISTICS PARK OF SINGAPORE —
FREE TRADE ZONE

SECOND SCHEDULE — continued

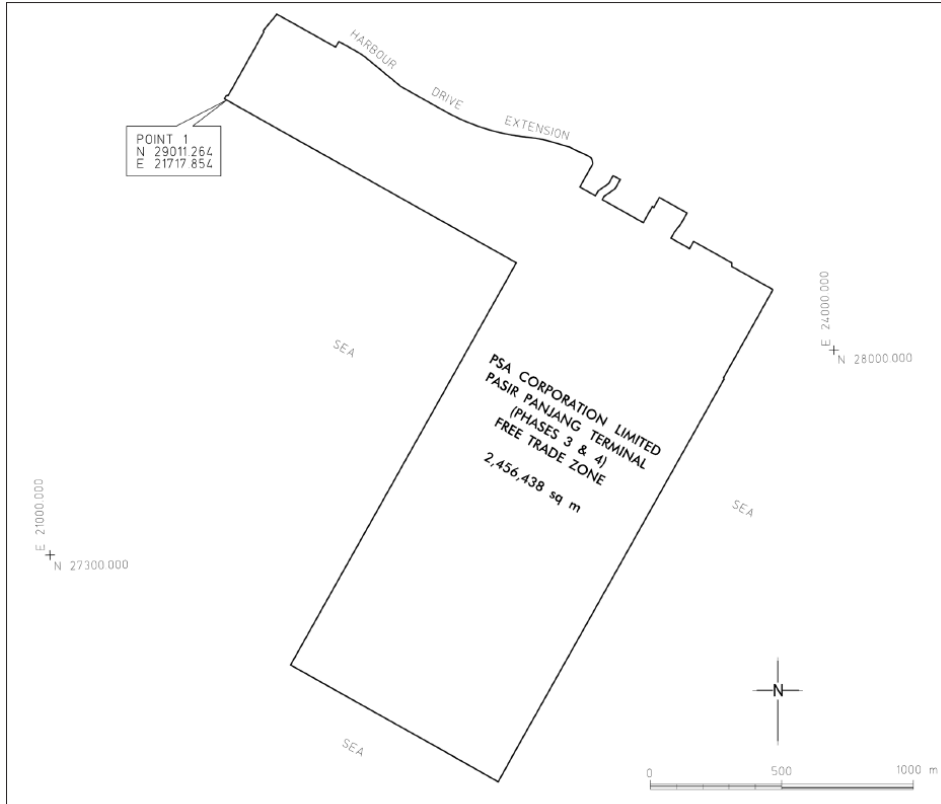


[S 727/2015 wef 01/12/2015]

SECOND SCHEDULE — *continued*

PLAN XI

PASIR PANJANG TERMINAL (PHASES 3 & 4) — FREE TRADE ZONE



[G.N. Nos. S 462/91; S 217/92; S 429/92; S 7/93; S 258/93; S 390/93; S 518/93; S 108/95; S 435/97; S 600/98; S 443/99; S 535/2000; S 596/2000; S 598/2000; S 199/2001; S 282/2001; S 383/2001; S 208/2002; S 334/2002; S 529/2002; S 37/2003; S 106/2003; S 33/2004; S 45/2004; S 64/2004; S 283/2004; S 626/2005; S 272/2006; S 490/2007; S 602/2008; S 4/2009; S 127/2009; S 477/2009; S 568/2009; S 336/2010; S 637/2011; S 259/2012; S 705/2013; S 317/2014; S 412/2014]

LEGISLATIVE HISTORY
FREE TRADE ZONES (DECLARED AREAS) NOTIFICATION
(CHAPTER 114, N 3)

This Legislative History is provided for the convenience of users of the Free Trade Zones (Declared Areas) Notification. It is not part of this Notification.

**1. G.N. No. S 462/91 — Free Trade Zones (Declared Areas)
Notification 1991**

Date of commencement : 11 October 1991

**2. G.N. No. S 217/92 — Free Trade Zones (Declared Areas) (Amendment)
Notification 1992**

Date of commencement : 20 May 1992

**3. G.N. No. S 429/92 — Free Trade Zones (Declared Areas) (Amendment
No. 2) Notification 1992**

Date of commencement : 20 October 1992

**4. G.N. No. S 7/93 — Free Trade Zones (Declared Areas) (Amendment)
Notification 1993**

Date of commencement : 27 January 1993

**5. 1993 Revised Edition — Free Trade Zones (Declared Areas) Notification
(N 3)**

Date of operation : 1 April 1993

**6. G.N. No. S 258/93 — Free Trade Zones (Declared Areas) (Amendment)
Notification 1993**

Date of commencement : 15 July 1993

**7. G.N. No. S 390/93 — Free Trade Zones (Declared Areas) (Amendment
No. 2) Notification 1993**

Date of commencement : 15 October 1993

**8. G.N. No. S 518/93 — Free Trade Zones (Declared Areas) (Amendment
No. 3) Notification 1993**

Date of commencement : 24 December 1993

**9. G.N. No. S 108/95 — Free Trade Zones (Declared Areas) (Amendment)
Notification 1995**

Date of commencement : 17 March 1995

10. G.N. No. S 435/97 — Free Trade Zones (Declared Areas) (Amendment) Notification 1997

Date of commencement : 1 October 1997

11. G.N. No. S 600/98 — Free Trade Zones (Declared Areas) (Amendment) Notification 1998

Date of commencement : 31 December 1998

12. G.N. No. S 598/2000 — Free Trade Zones (Declared Areas) (Amendment No. 2) Notification 2000

Date of commencement : 1 February 1999
(paragraphs 2(a) and 3(a))

13. G.N. No. S 598/2000 — Free Trade Zones (Declared Areas) (Amendment No. 2) Notification 2000

Date of commencement : 6 December 1999
(paragraphs 2(b) and 3(b))

14. 2000 Revised Edition — Free Trade Zones (Declared Areas) Notification (N 3)

Date of operation : 31 January 2000

15. G.N. No. S 535/2000 — Free Trade Zones (Declared Areas) (Amendment) Notification 2000

Date of commencement : 1 December 2000

16. G.N. No. S 199/2001 — Free Trade Zones (Declared Areas) (Amendment) Notification 2001

Date of commencement : 2 April 2001

17. G.N. No. S 282/2001 — Free Trade Zones (Declared Areas) (Amendment No. 2) Notification 2001

Date of commencement : 1 June 2001

18. G.N. No. S 383/2001 — Free Trade Zones (Declared Areas) (Amendment No. 3) Notification 2001

Date of commencement : 17 August 2001

19. G.N. No. S 208/2002 — Free Trade Zones (Declared Areas) (Amendment) Notification 2002

Date of commencement : 8 May 2002

20. G.N. No. S 334/2002 — Free Trade Zones (Declared Areas) (Amendment No. 2) Notification 2002

Date of commencement : 8 July 2002

21. G.N. No. S 529/2002 — Free Trade Zones (Declared Areas) (Amendment No. 3) Notification 2002

Date of commencement : 1 October 2002

22. G.N. No. S 37/2003 — Free Trade Zones (Declared Areas) (Amendment) Notification 2003

Date of commencement : 24 January 2003

23. G.N. No. S 106/2003 — Free Trade Zones (Declared Areas) (Amendment No. 2) Notification 2003

Date of commencement : 17 March 2003

24. G.N. No. S 33/2004 — Free Trade Zones (Declared Areas) (Amendment) Notification 2004

Date of commencement : 1 February 2004

25. G.N. No. S 45/2004 — Free Trade Zones (Declared Areas) (Amendment No. 2) Notification 2004

Date of commencement : 1 February 2004

26. G.N. No. S 64/2004 — Free Trade Zones (Declared Areas) (Amendment No. 3) Notification 2004

Date of commencement : 16 February 2004

27. G.N. No. S 283/2004 — Free Trade Zones (Declared Areas) (Amendment No. 4) Notification 2004

Date of commencement : 17 May 2004

28. G.N. No. S 626/2005 — Free Trade Zones (Declared Areas) (Amendment) Notification 2005

Date of commencement : 1 October 2005

29. G.N. No. S 272/2006 — Free Trade Zones (Declared Areas) (Amendment) Notification 2006

Date of commencement : 1 May 2006

30. G.N. No. S 490/2007 — Free Trade Zones (Declared Areas) (Amendment) Notification 2007

Date of commencement : 20 September 2007

31. G.N. No. S 602/2008 — Free Trade Zones (Declared Areas) (Amendment) Notification 2008

Date of commencement : 1 December 2008

32. G.N. No. S 4/2009 — Free Trade Zones (Declared Areas) (Amendment) Notification 2009

Date of commencement : 6 January 2009

33. G.N. No. S 127/2009 — Free Trade Zones (Declared Areas) (Amendment No. 2) Notification 2009

Date of commencement : 30 March 2009

34. G.N. No. S 477/2009 — Free Trade Zones (Declared Areas) (Amendment No. 3) Notification 2009

Date of commencement : 9 October 2009

35. G.N. No. S 568/2009 — Free Trade Zones (Declared Areas) (Amendment No. 4) Notification 2009

Date of commencement : 20 November 2009

36. G.N. No. S 336/2010 — Free Trade Zones (Declared Areas) (Amendment) Notification 2010

Date of commencement : 1 July 2010

37. G.N. No. S 637/2011 — Free Trade Zones (Declared Areas) (Amendment) Notification 2011

Date of commencement : 1 December 2011

38. G.N. No. S 259/2012 — Free Trade Zones (Declared Areas) (Amendment) Notification 2012

Date of commencement : 4 June 2012

39. G.N. No. S 705/2013 — Free Trade Zones (Declared Areas) (Amendment) Notification 2013

Date of commencement : 1 January 2014

40. G.N. No. S 317/2014 — Free Trade Zones (Declared Areas) (Amendment) Notification 2014

Date of commencement : 30 April 2014

41. G.N. No. S 412/2014 — Free Trade Zones (Declared Areas) (Amendment No. 2) Notification 2014

Date of commencement : 24 June 2014

42. 2014 Revised Edition — Free Trade Zones (Declared Areas) Notification (N 3)

Date of operation : 31 October 2014

43. G.N. No. S 727/2015 — Free Trade Zones (Declared Areas) (Amendment) Notification 2015

Date of commencement : 1 December 2015