

PROTECTED AREAS AND PROTECTED PLACES ACT  
(CHAPTER 256, SECTION 5(1))

PROTECTED PLACES (CONSOLIDATION) ORDER

ARRANGEMENT OF PARAGRAPHS

Paragraph

1. Citation
  2. Protected places, permits and authorised officers  
The Schedule
- 

**Citation**

1. This Order may be cited as the Protected Places (Consolidation) Order.

**Protected places, permits and authorised officers**

2. The premises described in the second column of the Schedule are declared to be protected places for the purposes of the Protected Areas and Protected Places Act, and no person shall be in those premises unless he is in possession of a pass-card or permit issued by the authority specified in the first column of the Schedule or has received the permission of an authorised officer on duty at the premises to enter the premises.

THE SCHEDULE

<i>First column</i>	<i>Second column</i>
The Authority	Protected Place
(1) S 319/91 [26.7.91] The Director, Electricity Department, Public Utilities Board.	(1) Deleted by S 124/2008, wef 14/03/2008. (2) PUBLIC UTILITIES BOARD 230 KV SUBSTATION AT UPPER JURONG ROAD.

THE SCHEDULE — *continued*

*First column*  
The Authority

*Second column*  
Protected Place

All that area comprised wholly on part of Lot 2271 MK No. 16 occupied by “PUB 230 kv Substation” containing an area of about 15,624.4 square metres and bounded approximately as follows:

Commencing at a point on the south-eastern corner of the perimeter fence of the aforesaid “PUB 230 kv Substation” which point is 34,475.152 metres North and 11,468.205 metres East of the Survey Department origin of co-ordinates, the boundaries run along successive lines of fences of bearings and distances as under:

<i>Bearing</i>	<i>Distance in metres</i>
270° 07'	88.6 (along fence)
347° 42'	4.7 (along fence)
331° 34'	8.9
0° 00'	154.6
90° 25'	1.7
157° 08'	5.0
168° 47'	2.6
178° 00'	5.2
88° 48'	1.0 (at pillar of gate)
89° 33'	7.2 (along pillars of gate)
89° 54'	1.2 (along pillars of side gate)
90° 18'	1.0 (along fence)
2° 25'	7.8
16° 35'	2.7
25° 32'	2.8
87° 50'	56.4

THE SCHEDULE — *continued*

<i>First column</i>	<i>Second column</i>
The Authority	Protected Place
150° 13'	3.8
90° 58'	1.3 (at pillar of side gate)
90° 45'	1.1
91° 03'	7.2 (along pillars of main gate)
91° 06'	1.0 (along fence)
19° 00'	4.2
87° 46'	6.6
180° 02'	170.8

to the point of Commencement.

(3) Deleted by S 124/2008, wef 14/03/2008.

(4) PUBLIC UTILITIES BOARD 230 KV  
SUBSTATION AT WEST ADMIRALTY  
ROAD.

All that area comprised partly in Lot 1680 and partly in Lot 1681Pt MK No. 13 occupied by "PUB 230/66 KV Substation" containing an area of 6,968.2 square metres and bounded approximately as follows:

Commencing at a point on the south-western corner of the perimeter fence of the aforesaid "PUB Substation" which point is 49,254.244 metres North and 25,466.347 metres East of the Survey Department of origin of co-ordinates, the boundaries run along successive lines of fences of bearings and distances as under:

<i>Bearing</i>	<i>Distance in metres</i>
333° 54'	10.1 (along fence fronting Sembawang)
52° 32'	0.4
334° 00'	32.1

THE SCHEDULE — *continued*

<i>First column</i>	<i>Second column</i>
The Authority	Protected Place
333° 31'	12.6
330° 01'	16.1
48° 34'	0.5
329° 41'	18.5
329° 33'	3.3
37° 14'	17.7
64° 13'	26.8 (along fence fronting Admiralty Road West)
154° 22'	7.4
62° 56'	0.9
63° 57'	10.2 (along a gate)
66° 57'	0.6 (along a fence)
335° 08'	7.4
64° 04'	18.1
154° 22'	41.8
154° 27'	25.0
154° 17'	22.5
63° 35'	0.5
155° 14'	12.0
244° 27'	44.4
244° 38'	25.6

to the point of commencement.

The boundaries of the Public Utilities Board 230 KV Substations at Pasir Panjang Road, Upper Jurong Road, Ubi Avenue 3 and West Admiralty Road are delineated in the Plans set out hereunder.

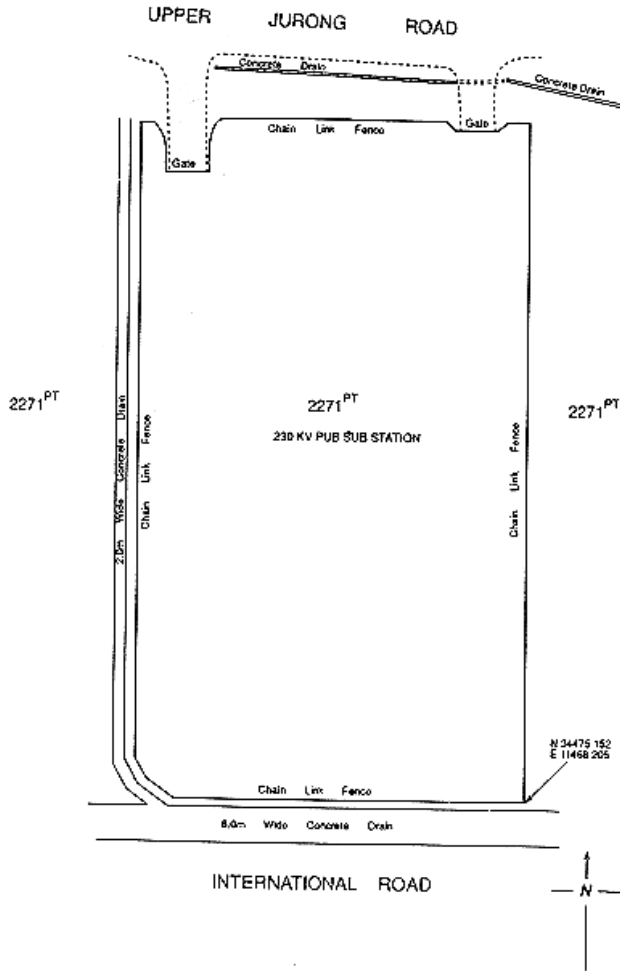
(1) *Form 1 — Deleted by S 124/2008, wef 14/03/2008.*

(2) Public Utilities Board 230 KV Substation at Upper Jurong Road

THE SCHEDULE — *continued*

*First column*  
The Authority

*Second column*  
Protected Place



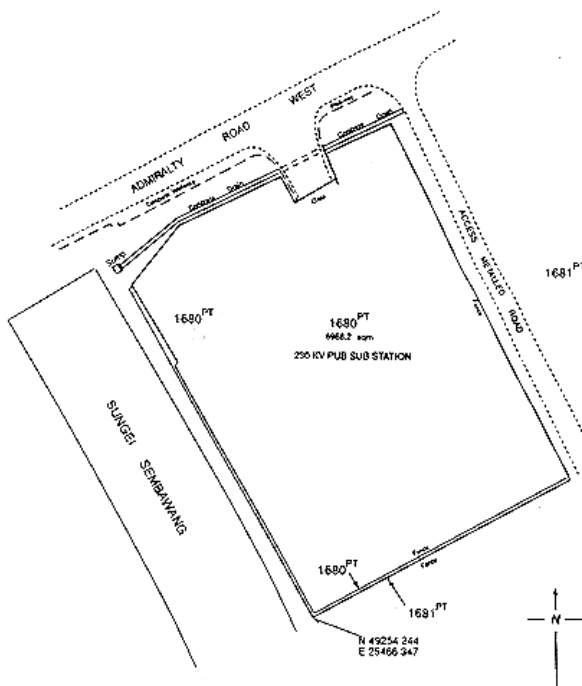
(3) *Form 3 — Deleted by S 124/2008, wef 14/03/2008.*

(4) Public Utilities Board 230 KV Substation at West Admiralty Road

THE SCHEDULE — *continued*

*First column*  
The Authority

*Second column*  
Protected Place



*First column*  
The Authority

*Second column*  
Protected Place

- (2) S 330/91 [2.8.91] SINGAPORE SHIPBUILDING & General Manager, ENGINEERING LIMITED PREMISES, NO. Singapore Shipbuilding & Engineering Limited. 16 BENOI ROAD SINGAPORE 2262.

All that area comprised wholly in Lot 203 MK No. 7 (TUAS) occupied by the "SINGAPORE SHIPBUILDING & ENGINEERING LIMITED" containing an area of about 20,224.2 square metres and bounded approximately as follows:

THE SCHEDULE — *continued*

*First column*  
The Authority

*Second column*  
Protected Place

Commencing at the southern-most corner of the perimeter fence of the aforesaid “SINGAPORE SHIPBUILDING & ENGINEERING LIMITED” which point is 31,480.060 metres North and 10,772.082 metres East of the Survey Department origin of co-ordinates, the boundaries run along successive lines of fences of bearings and distances as under:

<i>Bearing</i>	<i>Distance in metres</i>
315° 17'	76.6 (along bottom of slope)
315° 15'	87.4 (along bottom of slope)
82° 52'	36.2
49° 12'	0.1
82° 54'	60.8
82° 46'	51.9
82° 44'	53.5
172° 35'	5.3
262° 56'	4.8 (along concrete access)
187° 24'	0.2
173° 03'	2.6 (at bin centre)
157° 52'	0.3
83° 31'	4.4
172° 22'	4.9 (along a wall)
173° 00'	8.0 (across an access road)
172° 53'	4.9 (along a wall)
84° 32'	0.3

THE SCHEDULE — *continued*

<i>First column</i>	<i>Second column</i>
The Authority	Protected Place
172° 48'	55.1
265° 47'	0.3
172° 33'	6.1 (partly along a wall)
172° 33'	7.7 (across an access)
172° 46'	6.2 (partly along a wall)
88° 38'	0.3
172° 52'	13.8 (along bottom of slope)
177° 12'	3.6 (along bottom of slope)
219° 29'	16.2 (along bottom of slope)
258° 39'	3.6
262° 52'	45.4
262° 41'	41.5

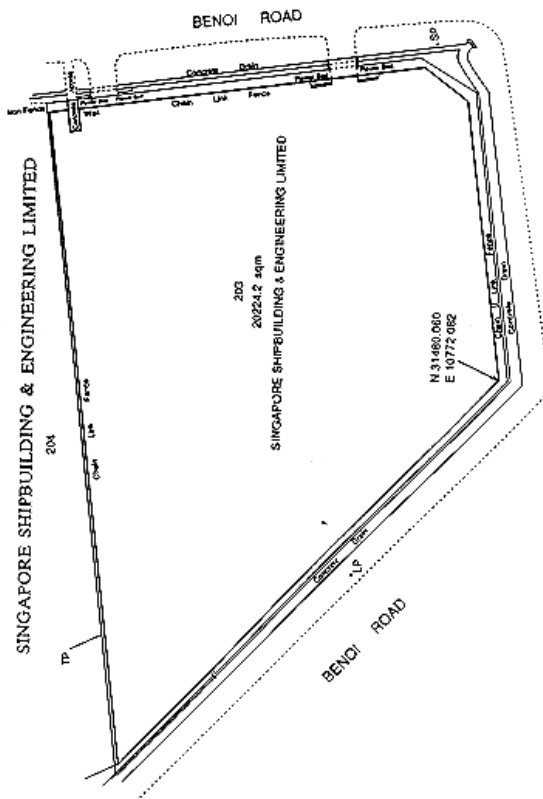
to the point of commencement.

The boundaries of “SINGAPORE SHIP-BUILDING & ENGINEERING LIMITED” are delineated in the Plan set out hereunder.



THE SCHEDULE — *continued*

<i>First column</i>	<i>Second column</i>
The Authority	Protected Place



<i>First column</i>	<i>Second column</i>
The Authority	Protected Place

- |  |  |
|--|--|
| <p>(3) S 345/91 (1) [8.8.91]<br/>The Director,<br/>Electricity<br/>Department.</p> | <p>(1) PUBLIC UTILITIES BOARD 230/66/22KV<br/>SUBSTATION AT KALLANG BASIN.</p> |
|--|--|

All that area comprised wholly in Lots 6541,5241 and 6535 MK No. 24 occupied by “PUB 230/66/22KV substation” containing an area of 17,417.2 square metres and bounded approximately as follows:

THE SCHEDULE — *continued*

*First column*  
The Authority

*Second column*  
Protected Place

Commencing at the southern-west point of the perimeter fence of the aforesaid “PUB substation” which point is 33,514.518 metres North and 32,160.033 metres East of the Survey Department of origin of co-ordinates, the boundaries run along successive lines of fences of bearings and distances as under:

<i>Bearing</i>	<i>Distance in metres</i>
275° 14'	37.6 (along fence beside a concrete drain)
327° 10'	8.5
310° 30'	4.9
327° 14'	26.1
328° 50'	38.0
14° 51'	7.3 (along fence)
57° 49'	28.9 (along fence fronting Kallang Bahru)
54° 32'	0.2
58° 11'	20.3
58° 19'	1.2 (along a side gate)
58° 12'	9.5 (to another side gate)
59° 55'	1.2 (along a side gate)
57° 38'	18.2 (along fence)
59° 32'	2.8
82° 25'	2.8
32° 16'	0.1
58° 08'	3.4 (along a gate)
97° 30'	0.1
57° 16'	14.2 (along a fence)

THE SCHEDULE — *continued*

<i>First column</i>	<i>Second column</i>
The Authority	Protected Place
7° 06'	0.1
55° 01'	2.1
58° 05'	5.3 (along a gate)
58° 24'	46.8
110° 12'	11.4
148° 15'	30.7 (along fence fronting Geylang Bahru)
148° 30'	36.0
149° 46'	5.6
151° 23'	6.1
152° 54'	18.0 (across a concrete drain)
238° 02'	58.7
238° 15'	19.4
237° 04'	2.5
238° 26'	44.0
239° 28'	7.8
238° 51'	0.2
255° 59'	2.9 (across a concrete drain)

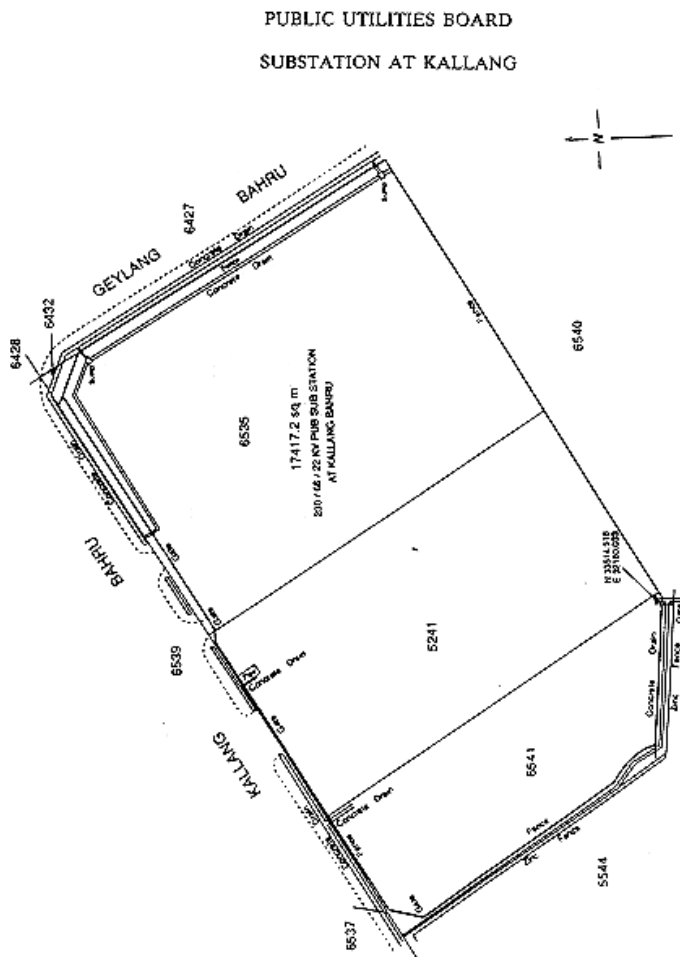
to the point of commencement.

The boundaries of the “PUB 230/66/22KV substation” are more particularly delineated in the Plan set out hereunder.

THE SCHEDULE — continued

First column  
The Authority

Second column  
Protected Place



The Director, Electricity  
Department.

(2) PUBLIC UTILITIES BOARD 230/66/22KV  
SUBSTATION AT AYER RAJAH  
CRESCENT.

All that area comprised wholly in Lot 1711 MK  
No. 3 occupied by "PUB 230/66/22KV substation"  
containing an area of 13,518.6 square metres and  
bounded approximately as follows:

THE SCHEDULE — *continued*

*First column*  
The Authority

*Second column*  
Protected Place

Commencing at the south-easterly corner of the perimeter fence of the aforesaid “PUB substation” which point is 30,997.930 metres North and 23,042.284 metres East of the Survey Department of origin of co-ordinates, the boundaries run along successive lines of fences of bearings and distances as under:

<i>Bearing</i>	<i>Distance in metres</i>
292° 17'	2.7 (along fence)
293° 40'	0.8 (concrete gate pillar)
20° 31'	0.6
292° 47'	5.9 (along gate)
204° 24'	0.6 (concrete gate pillar)
293° 32'	0.8
305° 21'	5.8 (along fence)
303° 26'	32.5
292° 53'	64.8
342° 04'	2.9
339° 53'	9.8
22° 25'	15.5
22° 55'	1.3 (along small gate)
22° 36'	9.2 (along big gate)
22° 25'	1.2 (along small gate)
23° 28'	0.2 (across concrete gate pillar)
292° 52'	0.1 (along brick wall)
22° 52'	23.0 (along outer face of brick wall fronting Ayer Rajah Crescent)
112° 38'	4.3

THE SCHEDULE — *continued*

<i>First column</i>	<i>Second column</i>
The Authority	Protected Place
21° 23'	0.9
22° 28'	7.3 (along big gate)
22° 12'	0.8 (across concrete gate pillar)
22° 32'	1.0 (along small gate)
292° 41'	4.4 (along outer face of brick wall)
23° 01'	0.4
74° 10'	0.1 (along fence)
22° 55'	31.5
68° 33'	13.0

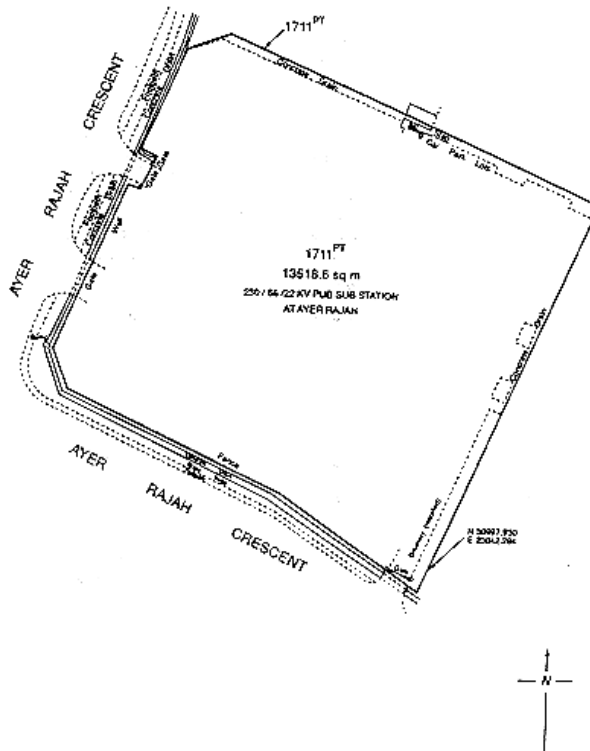
to the point of commencement.

The boundaries of the “PUB 230/66/22KV substation” are more particularly delineated in the Plan set out hereunder.

THE SCHEDULE — *continued*

<i>First column</i>	<i>Second column</i>
The Authority	Protected Place

PUBLIC UTILITIES BOARD  
SUBSTATION AT AYER RAJAH CRESCENT



The Director, Electricity Department. (3) PUBLIC UTILITIES BOARD 230/66/22KV SUBSTATION AT TAMPINES ROAD.

All that area comprised wholly in Lot 999 MK No. 29 occupied by “PUB 230/66/22KV substation” containing an area of 14,828.7 square metres and bounded approximately as follows:

Commencing at the south-easterly corner of the perimeter fence of the aforesaid “PUB substation” which point is 39,107.490 metres North and 39,971.614 metres East of the Survey Department of origin of co-ordinates, the boundaries run along

THE SCHEDULE — *continued*

<i>First column</i>	<i>Second column</i>																																																
The Authority	Protected Place																																																
	successive lines of fences of bearings and distances as under:																																																
	<table border="0"> <thead> <tr> <th style="text-align: left;"><i>Bearing</i></th> <th style="text-align: left;"><i>Distance in metres</i></th> </tr> </thead> <tbody> <tr> <td>278° 01'</td> <td>32.3 (along fence)</td> </tr> <tr> <td>278° 11'</td> <td>26.9</td> </tr> <tr> <td>278° 06'</td> <td>33.0</td> </tr> <tr> <td>278° 11'</td> <td>26.8</td> </tr> <tr> <td>278° 10'</td> <td>36.1</td> </tr> <tr> <td>8° 06'</td> <td>32.8</td> </tr> <tr> <td>8° 07'</td> <td>24.0</td> </tr> <tr> <td>8° 12'</td> <td>36.2</td> </tr> <tr> <td>87° 48'</td> <td>7.1 (along fence fronting Tampines Road)</td> </tr> <tr> <td>185° 09'</td> <td>1.0</td> </tr> <tr> <td>186° 17'</td> <td>3.8 (along a gate)</td> </tr> <tr> <td>97° 33'</td> <td>13.0 (along fence)</td> </tr> <tr> <td>98° 20'</td> <td>1.2</td> </tr> <tr> <td>98° 34'</td> <td>3.8</td> </tr> <tr> <td>98° 03'</td> <td>7.8 (along a gate)</td> </tr> <tr> <td>95° 44'</td> <td>1.1</td> </tr> <tr> <td>7° 18'</td> <td>9.7</td> </tr> <tr> <td>87° 35'</td> <td>11.6</td> </tr> <tr> <td>89° 25'</td> <td>30.5</td> </tr> <tr> <td>101° 19'</td> <td>29.1</td> </tr> <tr> <td>111° 57'</td> <td>6.3</td> </tr> <tr> <td>125° 17'</td> <td>9.3</td> </tr> <tr> <td>140° 18'</td> <td>33.0</td> </tr> </tbody> </table>	<i>Bearing</i>	<i>Distance in metres</i>	278° 01'	32.3 (along fence)	278° 11'	26.9	278° 06'	33.0	278° 11'	26.8	278° 10'	36.1	8° 06'	32.8	8° 07'	24.0	8° 12'	36.2	87° 48'	7.1 (along fence fronting Tampines Road)	185° 09'	1.0	186° 17'	3.8 (along a gate)	97° 33'	13.0 (along fence)	98° 20'	1.2	98° 34'	3.8	98° 03'	7.8 (along a gate)	95° 44'	1.1	7° 18'	9.7	87° 35'	11.6	89° 25'	30.5	101° 19'	29.1	111° 57'	6.3	125° 17'	9.3	140° 18'	33.0
<i>Bearing</i>	<i>Distance in metres</i>																																																
278° 01'	32.3 (along fence)																																																
278° 11'	26.9																																																
278° 06'	33.0																																																
278° 11'	26.8																																																
278° 10'	36.1																																																
8° 06'	32.8																																																
8° 07'	24.0																																																
8° 12'	36.2																																																
87° 48'	7.1 (along fence fronting Tampines Road)																																																
185° 09'	1.0																																																
186° 17'	3.8 (along a gate)																																																
97° 33'	13.0 (along fence)																																																
98° 20'	1.2																																																
98° 34'	3.8																																																
98° 03'	7.8 (along a gate)																																																
95° 44'	1.1																																																
7° 18'	9.7																																																
87° 35'	11.6																																																
89° 25'	30.5																																																
101° 19'	29.1																																																
111° 57'	6.3																																																
125° 17'	9.3																																																
140° 18'	33.0																																																



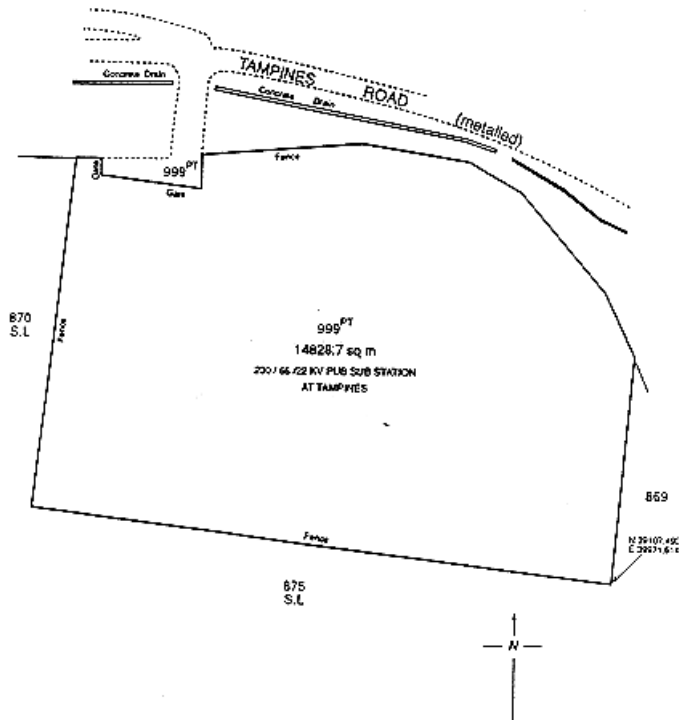
THE SCHEDULE — *continued*

<i>First column</i>	<i>Second column</i>
The Authority	Protected Place
157° 26'	6.1
146° 00'	12.8
188° 05'	32.1
188° 09'	29.8

to the point of commencement.

The boundaries of the “PUB 230/66/22KV substation” are more particularly delineated in the Plan set out hereunder:

PUBLIC UTILITIES BOARD  
SUBSTATION AT TAMPINES ROAD



THE SCHEDULE — *continued*

<i>First column</i>	<i>Second column</i>
The Authority	Protected Place
The Director, Electricity Department.	(4) PUBLIC UTILITIES BOARD 230/66/22KV SUBSTATION AT CHOA CHU KANG ROAD.

All that area comprised wholly in Lot 1529 MK No. 10 occupied by “PUB 230/66/22KV substation” containing an area of 8,313.9 square metres and bounded approximately as follows:

Commencing at the south-westerly corner of the perimeter fence of the aforesaid “PUB substation” which point is 39,750.911 metres North and 19,303.460 metres East of the Survey Department of origin of co-ordinates, the boundaries run along successive lines of fences of bearings and distances as under:

<i>Bearing</i>	<i>Distance in metres</i>
1° 42'	33.9 (along fence)
1° 44'	34.7
1° 57'	33.2
80° 01'	10.3 (along fence fronting Choa Chu Kang Road)
73° 22'	13.0
68° 05'	15.8
183° 44'	5.3
91° 01'	0.6
91° 30'	11.5 (along a gate)
92° 12'	2.0 (along a fence)
1° 43'	8.8
66° 42'	15.9
67° 12'	11.3
181° 25'	23.0
181° 57'	32.8

THE SCHEDULE — *continued*

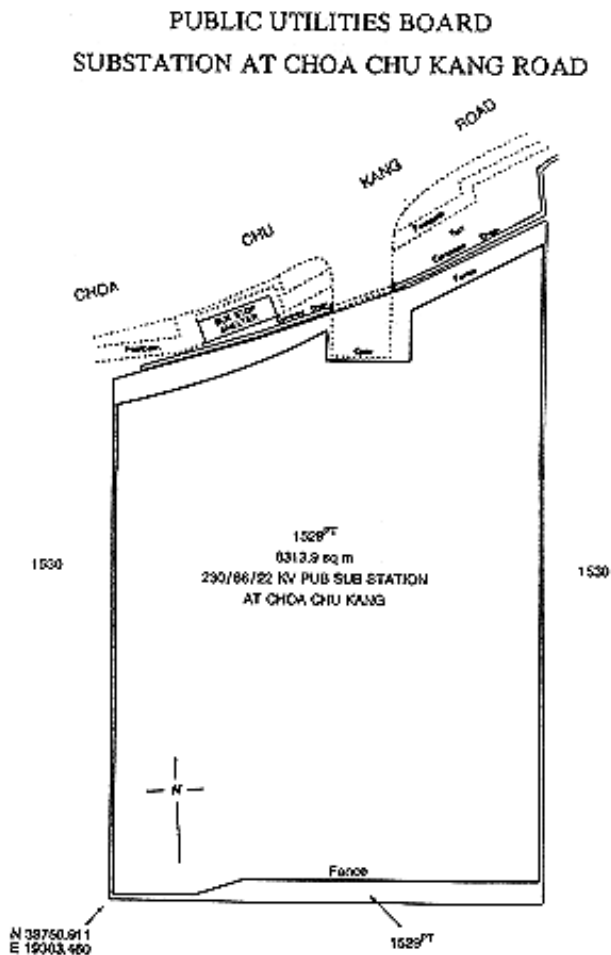
<i>First column</i>		<i>Second column</i>
The Authority		Protected Place
	181° 58'	27.7
	182° 33'	42.1
	271° 12'	33.8
	271° 28'	23.0
	252° 43'	9.7
	271° 25'	9.0

to the point of commencement.

The boundaries of the “PUB 230/66/22KV substation” are more particularly delineated in the Plan set out hereunder:

THE SCHEDULE — *continued*

<i>First column</i>	<i>Second column</i>
The Authority	Protected Place



<i>First column</i>	<i>Second column</i>
The Authority	Protected Place

- (4) S 368/91 [23.8.91] MRT OPERATIONS CONTROL CENTRE.  
 Managing Director,  
 Singapore MRT Ltd.

All the building (excluding its walkway at the ground level) and area known as “MRT

THE SCHEDULE — *continued**First column*  
The Authority*Second column*  
Protected Place

OPERATIONS CONTROL CENTRE” comprised in part of Lots 371 and 401 T.S. No. 11 containing an area of about 5,380 square metres and bounded approximately as follows:

Commencing at the northern-most corner of the aforesaid “MRT OPERATIONS CONTROL CENTRE” which point is 30,824.0 metres North and 30,014.7 metres East of the Survey Department origin of co-ordinates, the boundaries run along successive lines of bearings and distances as under:

<i>Bearing</i>	<i>Distance in metres</i>
121° 50'	27.6 (along the outer face of corrugated wall)
121° 59'	35.7
122° 45'	3.5
212° 02'	10.5 (along the outer face of pillars)
122° 02'	0.1
211° 48'	16.8 (along the outer face of pillars)
125° 21'	0.1 (along the outer face of pillars)
212° 06'	7.7 (along fence and gate)

thence along successive lines of wall of bearings and distances approximately as under:

<i>Bearing</i>	<i>Distance in metres</i>
302° 15'	0.4
212° 00'	24.3
299° 29'	26.5

thence along the common wall between MRT OPERATIONS CONTROL CENTRE AND MRT

THE SCHEDULE — *continued*

*First column*  
The Authority

*Second column*  
Protected Place

HEADQUARTERS on a bearing of approximately 209° 37' for a distance of about 12.9 metres, thence following the exterior limits of the upper floor, the boundaries run along successive lines of bearings and distances approximately as under:

<i>Bearing</i>	<i>Distance in metres</i>
299° 28'	53.2
351° 54'	10.0
44° 21'	53.6
118° 10'	3.3

to a point where it meets another corner of the building and following the exterior wall of the building and the details at the ground level, the boundaries run along successive lines of bearings and distances approximately as under:

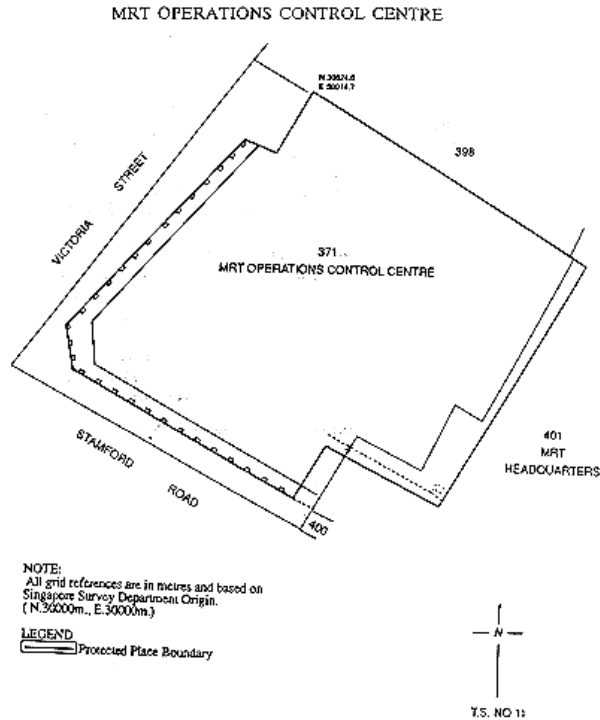
<i>Bearing</i>	<i>Distance in metres</i>
199° 59'	0.9
209° 59'	0.2 (along outer face of building)
119° 38'	3.2
31° 06'	2.1 (along gap, outer face of pillars and gate)
31° 31'	8.3 (along outer face of pillars and gate)
31° 55'	5.0 (along gate and outer face of corrugated wall)

to the point of commencement.

The boundaries of “MRT OPERATIONS CONTROL CENTRE” are more particularly delineated in the Plan set out hereunder:

THE SCHEDULE — *continued*

<i>First column</i>	<i>Second column</i>
The Authority	Protected Place



<i>First column</i>	<i>Second column</i>
The Authority	Protected Place

(5) S 398/91 [13.9.91] (1) [*Deleted by S 230/2016 wef 24/05/2016*]  
 Managing Director,  
 Singapore MRT Ltd.

Managing Director, (2) MRT CHANGI DEPOT  
 Singapore MRT Ltd.

All that area comprised in part of State Land Lots 433, 434, 454, 436, 455, 437, 456, 438, 439, 440, 442, 443, 1727, 1726, 447, 448, 1482, 1483, 1484, 1485, 1486, 1487, 1489, 1490, 1491, 1492, 1493, 1494, 1495, 1496, 1497, 1498, 1499, 1257, 1538, 3666, part of State Reserve and whole of State

THE SCHEDULE — *continued*

*First column*  
The Authority

*Second column*  
Protected Place

Land Lots 441, 445, 1844 Mukim No. 27 (BEDOK), occupied by MRT CHANGI DEPOT containing an area of about 162,812 square metres and bounded approximately as follows:

Commencing at the southern-most corner of the aforesaid “MRT CHANGI DEPOT” which point is 34,298.3 metres North and 42,490.7 metres East of the Survey Department origin of co-ordinates, the boundaries run along successive lines of bearings and distances as under:

<i>Bearing</i>	<i>Distance in metres</i>
305° 39'	278.9
307° 23'	231.2
281° 12'	67.8
264° 33'	230.4
308° 52'	89.0
257° 24'	52.7
329° 03'	4.7
20° 06'	2.0
37° 56'	1.8
69° 49'	3.1
80° 04'	3.2
350° 57'	7.1 (along a gate)
260° 42'	9.7
327° 45'	36.8
58° 32'	11.5
328° 34'	9.5 (along a gate)
238° 09'	5.0 (along outer wall of bin centre)



THE SCHEDULE — *continued*

<i>First column</i>	<i>Second column</i>
The Authority	Protected Place
328° 09'	0.2 (along outer wall of bin centre)
237° 18'	6.5
328° 08'	112.7
58° 08'	1.4
328° 20'	4.3
238° 15'	1.4
328° 15'	136.4
68° 59'	17.1
83° 51'	11.6
111° 19'	12.0
122° 39'	29.8
112° 55'	110.5
146° 54'	41.3
130° 55'	21.5
106° 18'	20.2 (along outer wall of concrete deck)
14° 02'	1.2 (along outer wall of concrete deck)
104° 02'	0.4 (along outer wall of concrete deck)
194° 02'	0.3 (along outer wall of concrete deck)
106° 44'	14.8
106° 32'	135.7
106° 34'	193.0
193° 35'	5.6
106° 35'	35.8

THE SCHEDULE — *continued*

<i>First column</i>	<i>Second column</i>
The Authority	Protected Place
126° 54'	3.0
106° 47'	100.8
104° 14'	36.3
106° 26'	89.3
106° 28'	116.7
106° 35'	105.0
127° 29'	26.6
137° 41'	1.6
146° 35'	6.5 (along a gate)
137° 20'	3.0
146° 31'	5.9
152° 25'	33.1
181° 50'	23.6
192° 55'	47.0
199° 44'	105.1
210° 41'	30.3
258° 43'	13.1

to the point of commencement.

The boundary of “MRT CHANGI DEPOT” is more particularly delineated in the Plan set out hereunder.



THE SCHEDULE — *continued**First column*  
The Authority*Second column*  
Protected Place

containing an area of about 165,192 square metres and bounded approximately as follows:

Commencing at the western-most corner of the aforesaid “MRT ULU PANDAN” which point is 34,397.0 metres North and 19,645.8 metres East of the Survey Department origin of co-ordinates, the boundaries run along successive lines of bearings and distances as under:

<i>Bearing</i>	<i>Distance in metres</i>
88° 36'	32.8
91° 06'	42.2
89° 56'	38.7
65° 07'	37.6
40° 28'	35.6
34° 34'	36.6
5° 43'	18.3
9° 56'	62.3
354° 25'	9.4
356° 14'	78.7
36° 09'	18.9
1° 34'	76.6
337° 46'	28.6
342° 43'	3.3
336° 46'	35.6
68° 48'	12.5
69° 19'	13.5
349° 18'	22.5
327° 22'	52.2
329° 47'	55.4

THE SCHEDULE — *continued*

<i>First column</i>	<i>Second column</i>
The Authority	Protected Place
342° 45'	19.5
342° 48'	12.3
342° 29'	12.3
344° 56'	4.9
344° 50'	8.8
261° 01'	0.2 (along a wall)
351° 01'	12.2 (along a gate and wall)
81° 01'	0.2 (along a wall)
351° 00'	14.0
350° 52'	14.0
351° 11'	16.8
353° 20'	5.7
359° 38'	5.9
3° 32'	8.8
3° 09'	27.2
3° 33'	13.8
359° 08'	8.7
2° 33'	23.8
6° 41'	10.1
19° 25'	41.8
33° 32'	7.5
45° 56'	8.5
54° 11'	14.9
61° 26'	2.7 (along a wall)
68° 18'	7.4
80° 06'	9.8
89° 29'	9.8

THE SCHEDULE — *continued*

<i>First column</i> The Authority	<i>Second column</i> Protected Place
99° 44'	10.1
104° 01'	35.5
97° 33'	45.2
103° 08'	16.1
183° 21'	11.5
179° 32'	63.4
179° 55'	29.9
179° 57'	30.1
180° 02'	33.0
179° 57'	36.5
180° 00'	69.7
180° 02'	59.5
179° 55'	23.3
262° 54'	25.9
180° 00'	22.9
99° 32'	25.9
180° 03'	59.0
180° 00'	54.5
180° 03'	30.0
180° 03'	73.8
179° 53'	57.2
180° 04'	55.3
180° 01'	74.1
179° 54'	55.8
180° 07'	47.5
179° 58'	56.0
179° 58'	24.3

THE SCHEDULE — *continued*

<i>First column</i>	<i>Second column</i>
The Authority	Protected Place
179° 57'	40.5
180° 02'	47.2
269° 59'	50.8
269° 53'	68.6
316° 46'	39.0
316° 47'	68.9
316° 51'	70.9
316° 45'	50.0
350° 19'	42.5
350° 18'	76.4

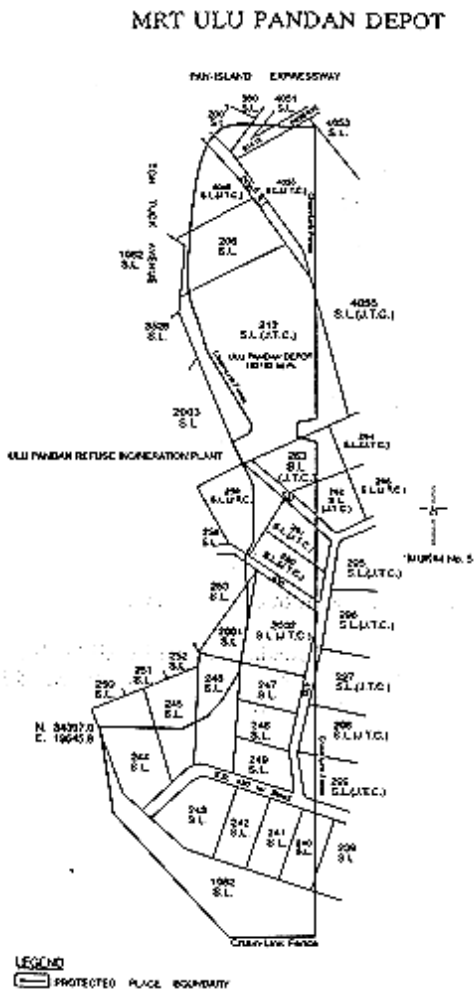
to the point of commencement.

The boundary of “MRT ULU PANDAN DEPOT” is more particularly delineated in the Plan set out hereunder.

THE SCHEDULE — *continued*

*First column*  
The Authority

*Second column*  
Protected Place



*First column*  
The Authority

*Second column*  
Protected Place

(6) S 399/91 [13.9.91] (1) KHALSA CRESCENT PRISON  
Director of Prisons.

All that area comprised in part of State Land Lots  
932 and 2006 Mukim No. 13 (Sembawang)



THE SCHEDULE — *continued*

*First column*  
The Authority

*Second column*  
Protected Place

occupied by KHALSA CRESCENT PRISON containing an area of about 27,499 square metres and bounded approximately as follows:

Commencing at the northern-most corner of the perimeter fence of the aforesaid KHALSA CRESCENT PRISON which point is 48,265.1 metres North and 22,421.1 metres East of the Survey Department origin of co-ordinates (30,000 metres North, 30,000 metres East), the boundary runs along successive lines of fences of bearings and distances as under:

<i>Bearing</i>	<i>Distance in metres</i>
163° 11'	140.3
257° 23'	8.5
259° 39'	56.9 (partly along a gate)
306° 04'	18.0
206° 50'	8.8
200° 08'	5.6
285° 29'	6.1 (along a gate)
196° 26'	14.0 (partly along a gate)
286° 32'	127.1
238° 23'	4.0
267° 22'	5.4
11° 19'	4.8 (along a gate)
286° 26'	42.5
21° 50'	66.1
73° 36'	114.6
79° 43'	91.3

to the point of commencement.

THE SCHEDULE — *continued*

<i>First column</i>	<i>Second column</i>																		
The Authority	Protected Place																		
	<p>The boundaries of KHALSA CRESCENT PRISON are more particularly delineated and edged pink on Survey Plan No. S.P. 20013 filed in the office of the Chief Surveyor, Singapore.</p>																		
Director of Prisons.	<p>(2) FALKLAND CENTRE AND ANCILLARIES (PASSAGEWAY AND PARADE SQUARE)</p> <p>All those areas comprised in parts of State Land Lot 1300 Mukim No 13 (Sembawang) occupied by “FALKLAND CENTRE” and its ancillary facilities namely “PASSAGEWAY” and “PARADE SQUARE” containing areas of about 5,826 square metres, 228 square metres and 3,926 square metres, respectively, and bounded approximately as follows:</p> <p>(a) FALKLAND CENTRE</p> <p>Commencing at a northern-most corner of the perimeter fence of the aforesaid “FALKLAND CENTRE” which point is 49,258.3 metres North and 27,240.2 metres East of the Survey Department origin of co-ordinates (30,000 metres North, 30,000 metres East), the boundaries run along successive lines of fences of bearings and distances as under:</p> <table border="0" style="margin-left: 40px;"> <thead> <tr> <th style="text-align: left;"><i>Bearing</i></th> <th style="text-align: left;"><i>Distance in metres</i></th> </tr> </thead> <tbody> <tr> <td>119° 06'</td> <td>41.4</td> </tr> <tr> <td>209° 34'</td> <td>5.9</td> </tr> <tr> <td>119° 19'</td> <td>36.1</td> </tr> <tr> <td>37° 52'</td> <td>3.4</td> </tr> <tr> <td>119° 58'</td> <td>23.5</td> </tr> <tr> <td>206° 46'</td> <td>2.9</td> </tr> <tr> <td>117° 44'</td> <td>11.9</td> </tr> <tr> <td>202° 20'</td> <td>21.7</td> </tr> </tbody> </table>	<i>Bearing</i>	<i>Distance in metres</i>	119° 06'	41.4	209° 34'	5.9	119° 19'	36.1	37° 52'	3.4	119° 58'	23.5	206° 46'	2.9	117° 44'	11.9	202° 20'	21.7
<i>Bearing</i>	<i>Distance in metres</i>																		
119° 06'	41.4																		
209° 34'	5.9																		
119° 19'	36.1																		
37° 52'	3.4																		
119° 58'	23.5																		
206° 46'	2.9																		
117° 44'	11.9																		
202° 20'	21.7																		

THE SCHEDULE — *continued*

<i>First column</i>	<i>Second column</i>
The Authority	Protected Place
204° 10'	1.2 (along a gate)
202° 35'	4.0 (along a gate)
297° 51'	5.7
210° 55'	42.9
301° 33'	56.6
297° 28'	0.9 (along a gate)
302° 57'	1.9
18° 40'	39.2
9° 59'	7.8
299° 28'	43.0
34° 22'	26.9

to the point of commencement.

(b) PASSAGEWAY ANCILLARY TO  
FALKLAND CENTRE

Commencing at a northern-most corner of the perimeter fence of the aforesaid "PASSAGEWAY ANCILLARY" to "FALKLAND CENTRE" which point is 49,166.6 metres North and 27,246.6 metres East of the Survey Department origin of coordinates (30,000 metres North, 30,000 metres East), the boundaries run along successive lines of fences of bearings and distances as under:

<i>Bearing</i>	<i>Distance in metres</i>
124° 42'	0.3
114° 49'	2.4 (along a gate)
109° 22'	0.8
199° 46'	33.8
190° 02'	17.6
208° 16'	1.1 (along a gate)

THE SCHEDULE — *continued*

<i>First column</i>	<i>Second column</i>
The Authority	Protected Place
211° 23'	0.7
294° 23'	0.8
300° 09'	2.4 (along a gate)
300° 06'	0.6
298° 10'	2.8
19° 47'	51.2
35° 12'	1.1

to the point of commencement; and

(c) PARADE SQUARE ANCILLARY TO  
FALKLAND CENTRE

Commencing at a northern-most corner of perimeter fence of the aforesaid “PARADE SQUARE ANCILLARY TO FALKLAND CENTRE” which point is 49,116.3 metres North and 27,231.1 metres East of the Survey Department origin of co-ordinates (30,000 metres North, 30,000 metres East), the boundaries run along successive lines of fences of bearings and distances as under:

<i>Bearing</i>	<i>Distance in metres</i>
124° 06'	0.6
120° 09'	2.4 (along a gate)
114° 23'	0.8
119° 57'	83.4
211° 18'	45.4
300° 07'	86.2
30° 08'	45.1

to the point of commencement.

The boundaries of “FALKLAND CENTRE” together with those of the “PASSAGEWAY” and

THE SCHEDULE — *continued*

<i>First column</i>	<i>Second column</i>																										
The Authority	Protected Place																										
	<p>“PARADE SQUARE ANCILLARY” to the “FALKLAND CENTRE” are more particularly delineated and edged pink on Survey Plan No. 20015 filed in the office of the Chief Surveyor, Singapore.</p>																										
Director of Prisons	<p>(3) SELARANG PARK CENTRE</p> <p>All that area comprised in part of State Land Lot 1610 MUKIM NO. 31 (CHANGI) occupied by “SELARANG PARK CENTRE” containing an area of about 1,549 square metres and bounded approximately as follows:</p> <p>Commencing at the northern-most point of the aforesaid “SELARANG PARK CENTRE” which point is 39,445.7 metres North and 44,150.4 metres East of the Survey Department origin of co-ordinates (30,000 metres North, 30,000 metres East), the boundary runs along successive lines of fences of bearings and distances as under:</p> <table border="0"> <thead> <tr> <th style="text-align: left;"><i>Bearing</i></th> <th style="text-align: left;"><i>Distance in metres</i></th> </tr> </thead> <tbody> <tr> <td>108° 39'</td> <td>30.0 (partly along a gate)</td> </tr> <tr> <td>103° 28'</td> <td>10.1 (along building wall)</td> </tr> <tr> <td>184° 17'</td> <td>0.1 (along building wall)</td> </tr> <tr> <td>105° 35'</td> <td>1.8 (along a gate)</td> </tr> <tr> <td>103° 15'</td> <td>17.7</td> </tr> <tr> <td>157° 17'</td> <td>20.2 (partly along a gate)</td> </tr> <tr> <td>158° 29'</td> <td>3.4</td> </tr> <tr> <td>165° 14'</td> <td>2.4</td> </tr> <tr> <td>182° 47'</td> <td>3.3</td> </tr> <tr> <td>277° 45'</td> <td>33.3</td> </tr> <tr> <td>283° 05'</td> <td>2.0</td> </tr> <tr> <td>283° 29'</td> <td>10.1 (along building wall)</td> </tr> </tbody> </table>	<i>Bearing</i>	<i>Distance in metres</i>	108° 39'	30.0 (partly along a gate)	103° 28'	10.1 (along building wall)	184° 17'	0.1 (along building wall)	105° 35'	1.8 (along a gate)	103° 15'	17.7	157° 17'	20.2 (partly along a gate)	158° 29'	3.4	165° 14'	2.4	182° 47'	3.3	277° 45'	33.3	283° 05'	2.0	283° 29'	10.1 (along building wall)
<i>Bearing</i>	<i>Distance in metres</i>																										
108° 39'	30.0 (partly along a gate)																										
103° 28'	10.1 (along building wall)																										
184° 17'	0.1 (along building wall)																										
105° 35'	1.8 (along a gate)																										
103° 15'	17.7																										
157° 17'	20.2 (partly along a gate)																										
158° 29'	3.4																										
165° 14'	2.4																										
182° 47'	3.3																										
277° 45'	33.3																										
283° 05'	2.0																										
283° 29'	10.1 (along building wall)																										

THE SCHEDULE — *continued*

<i>First column</i>	<i>Second column</i>
The Authority	Protected Place
	10° 32' 0.8 (along building wall)
	319° 38' 36.9
	13° 47' 7.9

to the point of commencement.

The boundary of “SELARANG PARK CENTRE” are more particularly delineated and edged pink on Survey Plan No. S.P. 30016 filed in the office of the Chief Surveyor, Singapore.

(4) [*Deleted by S 19/2013 wef 16/01/2013*]

Director of Prisons.

(5) TANAH MERAH CENTRE

All that area comprised in part of State Land Lot 341-2 MUKIM NO. 31 (CHANGI) occupied by “TANAH MERAH CENTRE” containing an area of about 10,819 square metres and bounded approximately as follows:

Commencing at the northern-most point of the aforesaid “TANAH MERAH CENTRE” which point is 39,098.0 metres North and 44,308.9 metres East of the Survey Department origin of co-ordinates (30,000 metres North, 30,000 metres East), the boundaries run along successive lines of fences of bearings and distances as under:

<i>Bearing</i>	<i>Distance in metres</i>
146° 53'	26.2
236° 02'	46.5
325° 49'	3.6
236° 50'	18.4
165° 03'	50.9
174° 22'	3.6
161° 03'	8.7

THE SCHEDULE — *continued*

<i>First column</i>	<i>Second column</i>
The Authority	Protected Place
179° 11'	30.2
94° 49'	32.3
184° 31'	63.9
226° 17'	58.7
323° 45'	12.4
325° 53'	5.9
331° 22'	3.0
340° 04'	3.0
345° 04'	3.0
350° 38'	3.1
359° 59'	6.0
6° 32'	3.0
13° 51'	3.1
15° 24'	40.0
7° 07'	6.0
359° 03'	11.2
21° 25'	2.8
1° 36'	7.4 (along a gate)
339° 03'	4.5
272° 44'	3.5
2° 39'	5.6
322° 10'	44.3
320° 16'	14.0
326° 57'	13.5
236° 38'	3.0
314° 57'	3.7
319° 59'	4.0 (along a gate)

THE SCHEDULE — *continued*

<i>First column</i>	<i>Second column</i>
The Authority	Protected Place
330° 17'	3.2
322° 35'	6.2
55° 57'	10.2
48° 35'	4.2
36° 20'	5.0
43° 59'	2.0
47° 23'	2.6
55° 28'	2.5
59° 59'	1.9
58° 48'	16.7
48° 28'	15.1
47° 45'	7.2
57° 50'	32.9
61° 42'	11.9
64° 52'	13.1

to the point of commencement.

The boundaries of “TANAH MERAH CENTRE” are more particularly delineated and edged pink on Survey Plan No. S.P.30013 filed in the office of the Chief Surveyor, Singapore.

Director of Prisons.

(6) PRISON HEADQUARTERS

All that areas comprised in part of State Land Lots 341-1, 341-2, 341-4, 365, 1312 and part of UPPER CHANGI ROAD NORTH Mukim No. 31 (CHANGI), occupied by “PRISON HEADQUARTERS” containing an area of about 42,236 square metres and bounded approximately as follows:

Commencing at the northern-most point of the aforesaid “PRISON HEADQUARTERS” which



THE SCHEDULE — *continued*

*First column*  
The Authority

*Second column*  
Protected Place

point is 39,224.7 metres North and 44,614.2 metres East of the Survey Department origin of co-ordinates (30,000 metres North, 30,000 metres East), the boundaries run along successive lines of fences of bearings and distances as under:

<i>Bearing</i>	<i>Distance in metres</i>
122° 52'	3.1
169° 51'	20.0
211° 38'	5.2 (along a gate)
124° 53'	5.2
160° 07'	32.4
88° 09'	11.7
170° 13'	21.2
193° 33'	52.5
114° 27'	4.7
202° 25'	2.8
187° 21'	54.3
238° 31'	25.2
203° 04'	42.3
202° 59'	100.9
293° 02'	86.7
315° 32'	28.2
226° 44'	11.4
315° 48'	44.9
47° 16'	37.7
318° 21'	17.9
1° 01'	10.0 (across a gap)

THE SCHEDULE — *continued*

*First column*  
The Authority

*Second column*  
Protected Place

58° 08'	15.9
38° 31'	23.4
327° 17'	76.4
68° 34'	5.8

to meet a point at the corner of a garden wall, thence along the outer face of the garden wall on successive lines of fences of bearings and distances as under:

<i>Bearing</i>	<i>Distance in metres</i>
340° 15'	0.2
70° 57'	3.7
159° 34'	0.6
68° 51'	0.4
158° 23'	0.3

to meet a gate, thence along the said gate on a line of bearing of 85° 34' for a distance of 9.1 metres to meet a point at the corner of a pillar on successive lines of fences of bearings and distances as under:

<i>Bearing</i>	<i>Distance in metres</i>
351° 04'	0.3
79° 27'	0.3

to meet a point along another garden wall, thence partly along the outer face of the said garden wall on a line of bearing of 9° 39' for a distance of 0.8 metres to meet another point, thence across the garden wall on a line of bearing of 83° 55' for a distance of 0.1 metre to meet a fence, thence along successive lines of fences of bearings and distances as under:

<i>Bearing</i>	<i>Distance in metres</i>
----------------	---------------------------

THE SCHEDULE — *continued*

<i>First column</i>	<i>Second column</i>
The Authority	Protected Place
83° 55'	26.7
80° 46'	24.1
78° 30'	19.7
70° 09'	7.3
61° 29'	31.4
45° 18'	21.0
355° 55'	3.0
47° 50'	13.7
43° 34'	21.2
37° 27'	47.8
54° 58'	4.9

to the point of commencement.

The boundaries of “PRISON HEADQUARTERS” are more particularly delineated and edged pink on Survey Plan No. S.P.30014 filed in the office of the Chief Surveyor, Singapore.

Director of Prisons.

(7) CLEMENTI CENTRE

All that area comprised in part of State Land Lot 79-4 MUKIM No. 3 (PASIR PANJANG) occupied by “CLEMENTI CENTRE” containing an area of about 5,195 square metres and bounded approximately as follows:

Commencing at the northern-most point of the aforesaid “CLEMENTI CENTRE” which point is 30,372.2 metres North and 21,556.0 metres East of the Survey Department origin of co-ordinates (30,000 metres North, 30,000 metres East), the boundaries run along successive lines of fences of bearings and distances as under:

<i>Bearing</i>	<i>Distance in metres</i>
----------------	---------------------------



THE SCHEDULE — *continued*

<i>First column</i>	<i>Second column</i>																																				
The Authority	Protected Place																																				
	“SINGAPORE ELECTRONIC & ENGINEERING (PRIVATE) LIMITED PREMISES” which point is 41,566.9 metres North and 29,828.7 metres East of the Survey Department origin of co-ordinates (N 30,000m, E. 30,000 m), the boundaries run along successive lines of fence of bearings and distances as under:																																				
	<table border="0"> <thead> <tr> <th style="text-align: left;"><i>Bearing</i></th> <th style="text-align: left;"><i>Distance in metres</i></th> </tr> </thead> <tbody> <tr><td>94° 47'</td><td>6.0</td></tr> <tr><td>100° 08'</td><td>6.0</td></tr> <tr><td>111° 08'</td><td>6.2</td></tr> <tr><td>120° 01'</td><td>6.0</td></tr> <tr><td>126° 29'</td><td>5.7</td></tr> <tr><td>135° 50'</td><td>5.8</td></tr> <tr><td>142° 49'</td><td>6.0</td></tr> <tr><td>150° 14'</td><td>5.9</td></tr> <tr><td>162° 53'</td><td>6.0</td></tr> <tr><td>169° 54'</td><td>6.2</td></tr> <tr><td>179° 00'</td><td>6.2</td></tr> <tr><td>184° 50'</td><td>63.6</td></tr> <tr><td>267° 19'</td><td>32.6</td></tr> <tr><td>267° 33'</td><td>107.6 (along two successive gates)</td></tr> <tr><td>353° 41'</td><td>2.0</td></tr> <tr><td>356° 03'</td><td>6.6 (along a gate)</td></tr> <tr><td>359° 28'</td><td>0.9</td></tr> </tbody> </table>	<i>Bearing</i>	<i>Distance in metres</i>	94° 47'	6.0	100° 08'	6.0	111° 08'	6.2	120° 01'	6.0	126° 29'	5.7	135° 50'	5.8	142° 49'	6.0	150° 14'	5.9	162° 53'	6.0	169° 54'	6.2	179° 00'	6.2	184° 50'	63.6	267° 19'	32.6	267° 33'	107.6 (along two successive gates)	353° 41'	2.0	356° 03'	6.6 (along a gate)	359° 28'	0.9
<i>Bearing</i>	<i>Distance in metres</i>																																				
94° 47'	6.0																																				
100° 08'	6.0																																				
111° 08'	6.2																																				
120° 01'	6.0																																				
126° 29'	5.7																																				
135° 50'	5.8																																				
142° 49'	6.0																																				
150° 14'	5.9																																				
162° 53'	6.0																																				
169° 54'	6.2																																				
179° 00'	6.2																																				
184° 50'	63.6																																				
267° 19'	32.6																																				
267° 33'	107.6 (along two successive gates)																																				
353° 41'	2.0																																				
356° 03'	6.6 (along a gate)																																				
359° 28'	0.9																																				

to meet a building wall, thence along successive lines following the building wall of bearings and distances as under:

THE SCHEDULE — *continued*

<i>First column</i>	<i>Second column</i>
The Authority	Protected Place
	<i>Bearing</i> <i>Distance in metres</i>
	269° 06'                      0.1
	359° 06'                      0.1
	272° 19'                      0.1
	352° 11'                      0.3
	82° 11'                        0.1
	357° 11'                      2.5 (successively along a wall, a gate and a wall)
	269° 59'                      0.1
	356° 14'                      0.1
	to meet a fence, thence along successive lines of fence of bearings and distances as under:
	<i>Bearing</i> <i>Distance in metres</i>
	267° 47'                      1.7
	353° 59'                      18.8
	351° 32'                      21.1
	to meet a wall, thence along successive lines following the wall of bearings and distances as under:
	<i>Bearing</i> <i>Distance in metres</i>
	258° 14'                      0.2
	348° 14'                      6.5
	to meet a gate, thence along a line following the gate on an approximate bearing of 347° 56' and for a distance of approximately 10.7 metres to meet a wall, thence along successive lines following the wall of bearings and distances as under:
	<i>Bearing</i> <i>Distance in metres</i>
	347° 03'                      12.8

THE SCHEDULE — *continued*

<i>First column</i>	<i>Second column</i>
The Authority	Protected Place

31° 31'	10.3
83° 51'	2.5
173° 51'	0.1

to meet a fence, thence along successive lines of fence of bearings and distances as under:

<i>Bearing</i>	<i>Distance in metres</i>
83° 36'	33.3
166° 25'	0.6
78° 31'	15.3
351° 01'	0.7
72° 56'	36.5
80° 58'	13.0
82° 46'	15.4

to the point of commencement.

The boundaries of “SINGAPORE ELECTRONIC & ENGINEERING (PRIVATE) LIMITED PREMISES” are more particularly delineated and edged pink on survey Plan No. 20009 filed in the office of the Chief Surveyor, Singapore.

<i>First column</i>	<i>Second column</i>
---------------------	----------------------

(8) [*Deleted by S 399/2017 wef 19/07/2017*]

<i>First column</i>	<i>Second column</i>
---------------------	----------------------

The Authority	Protected Place
---------------	-----------------

(9) S 525/91 [29.11.91]

Senior Terminals Security Manager, PSA Corporation Limited	1. [ <i>Deleted by S 585/2018 wef 26/09/2018</i> ]
--	--

THE SCHEDULE — *continued*

<i>First column</i>	<i>Second column</i>
The Authority	Protected Place
Director (Corporate Development), PSA Corporation Limited	2. [ <i>Deleted by S 620/2009 wef 15/12/2009</i> ]
Senior Terminals Security Manager, PSA Corporation Limited	3. SEMBAWANG WHARVES.

All that area occupied by “SEMBAWANG WHARVES” containing an area of approximately 312,500 square metres and bounded by Fiji Road, Jamaica Road, Sembawang Shipyard, H M Dockyard, Stores Road, Stores Basin, Sembawang Park and Deptford Road.

The boundary commences at the westernmost corner of the aforesaid “SEMBAWANG WHARVES” which point bears the co-ordinates North 49,342.274 metres and East 27,216.569 metres of the Singapore Land Authority SVY 21 Datum and runs approximately as follows:

<i>Northing</i>	<i>Easting</i>
49,342.274	27,216.569
49,383.623	27,239.331
49,386.861	27,240.369
49,406.042	27,251.743
49,408.954	27,256.526
49,439.994	27,314.658
49,470.282	27,370.933
49,478.734	27,386.622
49,485.217	27,398.838
49,490.240	27,408.064
49,489.903	27,407.978



THE SCHEDULE — *continued*

<i>First column</i>	<i>Second column</i>
The Authority	Protected Place
49,486.849	27,412.203
49,495.094	27,426.829
49,506.771	27,447.666
49,522.803	27,476.531
49,558.642	27,542.619
49,584.126	27,589.381
49,563.317	27,625.639
49,545.591	27,656.885
49,524.579	27,693.334
49,512.606	27,714.162
49,506.148	27,720.383
49,498.448	27,723.726
49,490.251	27,723.287
49,367.320	27,654.402
49,327.834	27,633.993
49,324.491	27,634.413
49,324.480	27,634.615
49,321.503	27,639.675
49,319.456	27,642.940
49,318.621	27,644.951
49,306.532	27,666.063
49,309.041	27,667.707
49,362.714	27,698.153
49,352.393	27,716.567
49,345.243	27,729.151
49,337.805	27,742.036
49,336.487	27,741.436

THE SCHEDULE — *continued*

<i>First column</i>		<i>Second column</i>
The Authority		Protected Place
	49,335.211	27,742.644
	49,332.835	27,746.785
	49,335.447	27,748.622
	49,328.286	27,761.364
	49,323.858	27,769.138
	49,299.424	27,811.861
	49,298.193	27,814.483
	49,298.921	27,816.904
	49,294.152	27,826.134
	49,418.344	27,896.971
	49,436.914	27,907.607
	49,432.845	27,915.070
	49,428.228	27,923.827
	49,409.221	27,957.193
	49,402.618	27,953.432
	49,397.173	27,962.990
	49,403.777	27,966.751
	49,394.125	27,983.695
	49,331.379	27,947.978
	49,310.869	27,936.303
	49,270.023	27,913.052
	49,144.539	27,840.798
	49,135.868	27,855.999
	49,120.928	27,847.477
	49,060.531	27,953.363
	49,204.882	28,035.533
	49,490.843	28,198.423

THE SCHEDULE — *continued*

<i>First column</i>	<i>Second column</i>
The Authority	Protected Place
49,523.064	28,216.814
49,523.813	28,217.620
49,524.347	28,218.694
49,534.917	28,277.248
49,532.348	28,277.649
49,531.656	28,282.298
49,531.189	28,292.387
49,530.623	28,302.471
49,528,379	28,312.319
49,526.356	28,322.520
49,524.826	28,332.200
49,524.009	28,341.565
49,512.554	28,332.037
49,505.888	28,331.358
49,502.035	28,329.033
49,494.968	28,331.228
49,464.222	28,319.241
49,459.292	28,316.802
49,456.660	28,316.198
49,443.757	28,311.595
49,411.690	28,318.489
49,391.358	28,325.782
49,320.824	28,294.648
49,287.256	28,262.325
49,216.070	28,194.101
49,206.827	28,190.555
49,190.406	28,184.503

THE SCHEDULE — *continued*

<i>First column</i>	<i>Second column</i>
The Authority	Protected Place
49,170.057	28,176.685
49,119.571	28,157.523
49,039.203	28,127.767
49,038.474	28,125.064
49,034.967	28,121.225
49,019.994	28,114.291
48,997.663	28,103.972
48,986.153	28,096.359
48,946.197	28,086.729
48,891.087	28,037.195
48,890.310	28,015.309
48,890.263	28,012.609
48,918.562	27,977.621
48,958.734	27,896.637
48,959.885	27,894.195
48,960.848	27,891.672
48,968.830	27,868.403
49,031.306	27,761.988
49,089.903	27,718.284
49,093.244	27,712.477
49,065.978	27,696.904
49,078.106	27,676.425
49,094.024	27,685.852
49,101.529	27,688.623
49,107.770	27,687.208
49,125.633	27,656.414
49,127.151	27,654.182

THE SCHEDULE — *continued*

<i>First column</i>	<i>Second column</i>
The Authority	Protected Place
49,130.745	27,650.018
49,132.107	27,647.687
49,132.977	27,645.131
49,133.531	27,642.488
49,144.421	27,623.487
49,151.382	27,611.341
49,146.732	27,605.203
49,114.757	27,587.394
49,116.313	27,585.187
49,154.850	27,517.487
49,180.186	27,473.456
49,191.550	27,463.665
49,195.567	27,459.344
49,200.601	27,451.763
49,203.512	27,443.565
49,207.536	27,431.836
49,214.886	27,419.105
49,236.372	27,382.089
49,258.798	27,374.738
49,299.275	27,306.430
49,318.316	27,273.429
49,332.545	27,235.404

to the point of commencement and are delineated in the Plan set out below.

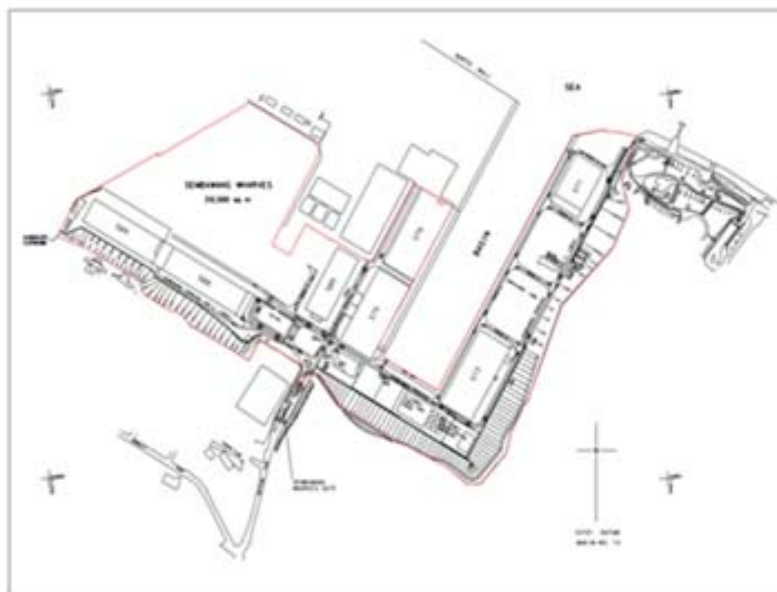
THE SCHEDULE — *continued*

*First column*

*Second column*

The Authority

Protected Place



Senior Terminals Security  
Manager, PSA Corporation  
Limited

4. BRANI TERMINAL.

All that area occupied by “BRANI TERMINAL” containing an area of approximately 861,550 square metres and bounded by Keppel Channel and Selat Sengkir.

The boundary commences at the north-westernmost corner of the aforesaid “BRANI TERMINAL” which point’s co-ordinates are North 27,282.754 metres and East 26,954.037 metres of the Singapore Land Authority SVY 21 Datum and runs approximately as follows:

<i>Northing</i>	<i>Easting</i>
27,282.671	26,974.813
27,143.905	26,971.892
27,098.134	26,973.362

THE SCHEDULE — *continued*

<i>First column</i>	<i>Second column</i>
The Authority	Protected Place
	27,054.962
	26,979.408
	27,004.854
	26,992.499
	26,965.480
	27,007.922
	27,346.614
	27,676.713
	27,348.670
	27,684.214
	27,372.258
	28,306.732
	27,367.908
	28,318.637
	26,715.732
	29,018.546
	26,711.540
	29,018.687
	26,703.631
	29,011.312
	26,568.339
	28,738.715
	26,625.258
	28,716.742
	26,640.101
	28,711.007
	26,649.390
	28,700.920
	26,510.506
	28,410.419
	26,510.031
	28,409.534
	26,684.759
	28,222.272
	26,734.009
	28,268.294
	26,843.412
	28,150.950
	26,858.152
	28,152.300
	26,879.854
	28,152.007
	26,906.040
	28,092.816
	26,918.169
	28,079.219
	26,980.779
	28,032.001
	27,001.006
	28,014.544
	27,003.125
	28,012.535
	27,005.077
	28,010.363

THE SCHEDULE — *continued*

<i>First column</i>	<i>Second column</i>
The Authority	Protected Place
27,006.413	28,007.876
27,007.614	28,005.101
27,009.514	27,999.595
27,010.299	27,996.778
27,012.020	27,987.919
27,012.625	27,984.956
27,015.805	27,979.841
27,017.559	27,977.380
27,019.459	27,975.031
27,021.509	27,972.952
27,023.786	27,971.127
27,028.521	27,967.577
27,030.889	27,966.053
27,035.134	27,963.379
27,047.805	27,955.510
27,060.791	27,947.970
27,071.501	27,942.308
27,087.484	27,933.997
27,098.340	27,928.621
27,114.201	27,920.078
27,138.605	27,903.120
27,159.632	27,882.831
27,192.922	27,838.645
27,194.952	27,727.938
27,208.999	27,709.952
27,195.263	27,699.415
27,170.613	27,681.265



THE SCHEDULE — *continued*

<i>First column</i>	<i>Second column</i>
The Authority	Protected Place
	27,172.023
	27,679.296
	27,168.680
	27,676.734
	27,167.810
	27,673.945
	27,155.978
	27,662.569
	27,161.009
	27,652.201
	27,161.403
	27,649.708
	27,147.469
	27,642.903
	27,135.424
	27,627.167
	27,118.144
	27,632.846
	27,112.386
	27,633.479
	27,109.451
	27,631.953
	27,059.091
	27,639.291
	26,985.829
	27,648.927
	26,947.180
	27,654.087
	26,947.299
	27,656.260
	26,927.086
	27,658.074
	26,916.067
	27,662.260
	26,920.548
	27,673.584
	26,920.189
	27,683.253
	26,914.099
	27,685.491
	26,913.937
	27,687.058
	26,913.491
	27,688.569
	26,912.139
	27,691.221
	26,910.730
	27,693.843
	26,909.217
	27,696.407
	26,906.532
	27,700.359
	26,903.935
	27,703.505

THE SCHEDULE — *continued*

<i>First column</i>		<i>Second column</i>
The Authority		Protected Place
	26,899.559	27,707.726
	26,841.036	27,749.978
	26,786.606	27,744.569
	26,784.233	27,751.868
	26,782.890	27,751.460
	26,783.129	27,750.671
	26,778.261	27,749.137
	26,778.041	27,749.881
	26,764.045	27,745.374
	26,764.829	27,742.870
	26,763.810	27,740.898
	26,761.233	27,740.080
	26,766.284	27,724.136
	26,753.655	27,719.951
	26,751.593	27,720.684
	26,749.897	27,720.069
	26,627.574	27,676.337
	26,666.293	27,575.810
	26,594.677	27,548.619
	26,593.337	27,548.991
	26,576.685	27,542.690
	26,599.144	27,484.123
	26,616.362	27,490.598
	26,624.662	27,488.309
	26,631.078	27,481.968
	26,636.879	27,472.832
	26,636.573	27,470.327

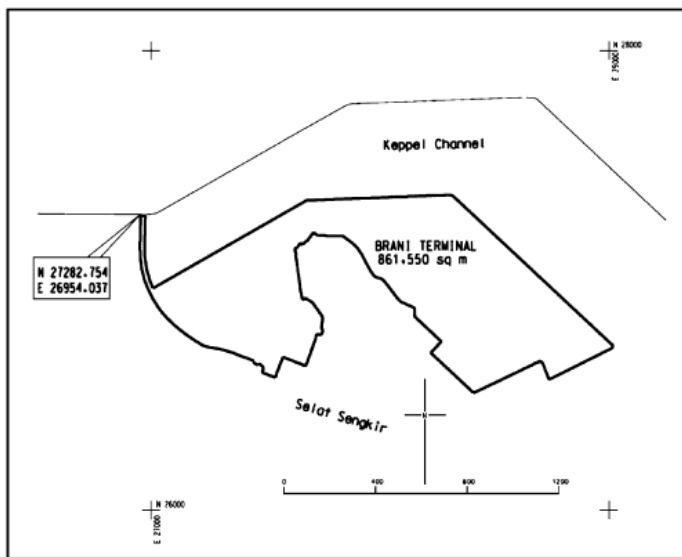
THE SCHEDULE — *continued*

<i>First column</i>	<i>Second column</i>
The Authority	Protected Place
	26,631.044
	26,642.331
	26,647.921
	26,648.975
	26,653.155
	26,660.638
	26,670.114
	26,685.407
	26,691.076
	26,696.656
	26,701.472
	26,704.458
	26,707.946
	26,712.614
	26,714.657
	26,740.345
	26,760.431
	26,782.017
	26,808.932
	26,836.945
	26,858.297
	26,883.156
	26,923.059
	26,955.682
	26,998.826
	27,049.137
	27,097.206
	27,467.291
	27,446.767
	27,449.867
	27,448.635
	27,440.078
	27,421.505
	27,393.015
	27,356.027
	27,336.822
	27,317.590
	27,298.462
	27,278.560
	27,258.842
	27,239.369
	27,229.759
	27,188.240
	27,158.096
	27,129.633
	27,097.493
	27,068.912
	27,049.555
	27,030.838
	27,005.782
	26,989.603
	26,971.958
	26,959.172
	26,952.664

THE SCHEDULE — *continued*

<i>First column</i>	<i>Second column</i>
The Authority	Protected Place
	27,144.382                      26,951.034
	27,282.754                      26,954.037

to the point of commencement and are delineated in the Plan set out below.



Senior Terminals Security  
Manager, PSA Corporation  
Limited

5. PSA Corporation Limited (KEPPEL  
DISTRIPARK).

All that area occupied by “ PSA Corporation Limited (KEPPEL DISTRIPARK) — PROTECTED PLACE” containing an area of approximately 170, 769 square metres and bounded by Keppel Road, Kampong Bahru Road and Ayer Rajah Expressway.

The boundary commences at the northern-most corner of the aforesaid “ PSA Corporation Limited (KEPPEL DISTRIPARK) — PROTECTED PLACE” which point’s adopted co-ordinates are North 28,573.4 metres and East 27,517.9 metres. The point of commencement is

THE SCHEDULE — *continued*

<i>First column</i>	<i>Second column</i>
The Authority	Protected Place
	1,426.6 metres south and 2,482.1 metres west of the Survey Department origin (30,000 metres North, 30,000 metres East) of co-ordinates and runs approximately as under:
<i>Bearing.</i>	<i>Distance in metres.</i>
133° 02'	15.0
133° 36'	255.0
133° 55'	50.0
134° 01'	58.8
180° 34'	5.5
196° 38'	10.9
220° 05'	18.9
218° 40'	22.5
227° 17'	73.6
227° 16'	160.3
227° 28'	78.6
228° 33'	220.0
228° 35'	136.7
316° 11'	49.3
331° 42'	23.3
344° 43'	85.1
356° 16'	63.5
09° 35'	58.5
348° 23'	23.8
299° 04'	20.2
339° 49'	7.3
65° 31'	33.9
62° 39'	27.7

THE SCHEDULE — *continued*

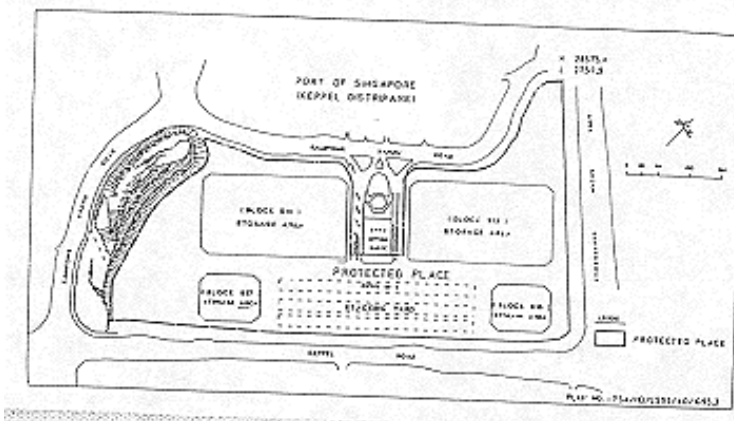
<i>First column</i>	<i>Second column</i>
The Authority	Protected Place
65° 53'	33.1
55° 38'	11.1
48° 36'	11.3
43° 23'	27.8
49° 03'	54.5
49° 31'	17.7
78° 01'	10.9
104° 15'	16.7
123° 37'	13.0
137° 27'	103.4
47° 14'	81.7
317° 19'	108.3
337° 02'	9.6
354° 16'	11.9
22° 00'	9.9
48° 23'	61.0
43° 46'	12.1
37° 45'	11.1
47° 07'	7.8
21° 46'	32.1
357° 57'	31.8
353° 40'	24.3
335° 06'	28.4
343° 23'	35.3
343° 28'	8.2
01° 04'	12.9
25° 23'	13.5

THE SCHEDULE — *continued*

<i>First column</i>	<i>Second column</i>
The Authority	Protected Place

41° 49'	19.9
---------	------

to the point of commencement and are delineated in the Plan set out hereunder.



- |  |   |
|--|---|
| Senior Terminals<br>Security Manager, PSA<br>Corporation Limited           | 6. [ <i>Deleted by S 295/2017 wef 09/06/2017</i> ]  |
| Senior Terminal Security and<br>Safety Manager,<br>PSA Corporation Limited | 7. [ <i>Deleted by s 620/2009, wef 15/12/2009</i> ] |

[S 585/2018 wef 26/09/2018]  
[S 295/2017 wef 09/06/2017]  
[S 486/2014 wef 24/07/2014]  
[S 61/2012 wef 13/02/2012]  
[S 506/93 wef 17/12/1993]  
[S 40/1998 wef 23/01/1998]  
[S 591/2009 wef 01/12/2009]  
[S 552/2011 wef 29/09/2011]

THE SCHEDULE — *continued**First column**Second column*

The Authority

Protected Place

- (10) S 580/91 [27.12.91] SHELL INSTALLATION AT PANDAN ROAD.  
Marketing Director,  
Shell Companies  
(Pte.) Ltd.

All those areas comprised in PRIVATE LOT A10269 and PRIVATE LOT A10270 (also known as part of Government survey Lot 4789 Mukim No. 5 Pandan) containing areas of about 10,438.8 square metres and 51,707 square metres, respectively, and bounded approximately as follows:

*Private Lot A10269*

Commencing at a point which is 31,087.5 metres North and 18,286.8 metres North and 18,286.8 metres East of the Survey Department origin of coordinates (N. 30,000m, E. 30,000m) the boundaries run along successive lines of bearings and distances as under:

<i>Bearing</i>	<i>Distance in metres</i>
15° 07' 30"	213.786
285° 08' 30"	48.020
195° 09' 00"	214.992

and bounded at the shoreline by rubble wall along successive lines of bearings and distances as under:

<i>Bearing</i>	<i>Distance in metres</i>
109° 53' 21"	16.587
119° 24' 03"	14.438
105° 52' 16"	8.508
57° 45' 44"	8.552
106° 06' 34"	3.285

to the point of commencement.



THE SCHEDULE — *continued*

<i>First column</i>	<i>Second column</i>
The Authority	Protected Place

*Private Lot A10270*

Commencing at a point which is 31,119.9 metres North and 18,172.7 metres East of the Survey Department origin of co-ordinates (N. 30,000m E. 30,000m) the boundaries run along successive lines of bearings and distances as under:

<i>Bearing</i>	<i>Distance in metres</i>
15° 09' 00"	101.219
105° 09' 00"	43.5
15° 09' 00"	113.0
285° 09' 00"	15.208
236° 09' 00"	9.29
285° 08' 40"	24.384
15° 07' 12"	36.545
18° 41' 18"	111.696
272° 57' 10"	110.197
262° 22' 10"	11.87

and bounded at the shoreline by rubble wall along successive lines of bearings and distances as under:

211° 33' 23"	28.230
204° 59' 52"	29.610
205° 13' 08"	117.393
220° 58' 58"	45.554
188° 08' 36"	44.442
163° 56' 27"	31.635
141° 06' 13"	30.691
134° 55' 48"	16.281
122° 47' 37"	30.918

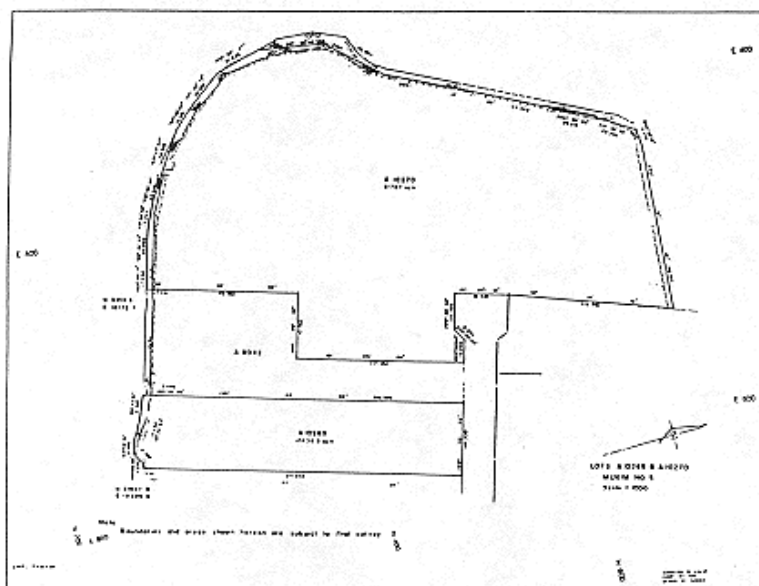
THE SCHEDULE — *continued*

<i>First column</i>	<i>Second column</i>
The Authority	Protected Place
120° 55' 01"	22.416
113° 05' 48"	17.243
106° 01' 23"	20.860
102° 09' 13"	17.634

to the point of commencement.

The boundaries of "SHELL INSTALLATION AT PANDAN ROAD" are more particularly delineated in the Plan set out hereunder.

SHELL INSTALLATION AT PANDAN ROAD



<i>First column</i>	<i>Second column</i>
The Authority	Protected Place
(11) S 31/92 [17.1.92] President and Chief Executive Officer of	PUBLIC UTILITIES BOARD GAS TURBINE GENERATING PLANT AT SENOKO POWER STATION.

THE SCHEDULE — *continued**First column**Second column*Senoko Energy Pte.  
Ltd.

All that area comprised in land Lot 1985, Mukim 13 (Sembawang) at Senoko Road, surrounded by a fencing containing an area of about 23,016.0 square metres and bounded approximately as follows:

Commencing at the south-western corner of the chain link fence which point is 49,699.619 metres North and 24,377.873 metres East of the Survey Department origin of co-ordinates 30,000 metres North, 30,000 metres East, the boundaries run along successive lines of fences of bearings and distances as under:

<i>Bearing</i>	<i>Distance in metres</i>
327° 19' 50"	151.766
327° 19' 50"	3.229
58° 17' 24"	52.057
50° 19' 39"	59.920
43° 52' 09"	23.434
56° 42' 18"	11.051
147° 20' 30"	15.263
147° 20' 30"	151.834
237° 21' 27"	56.499
237° 21' 27"	88.808

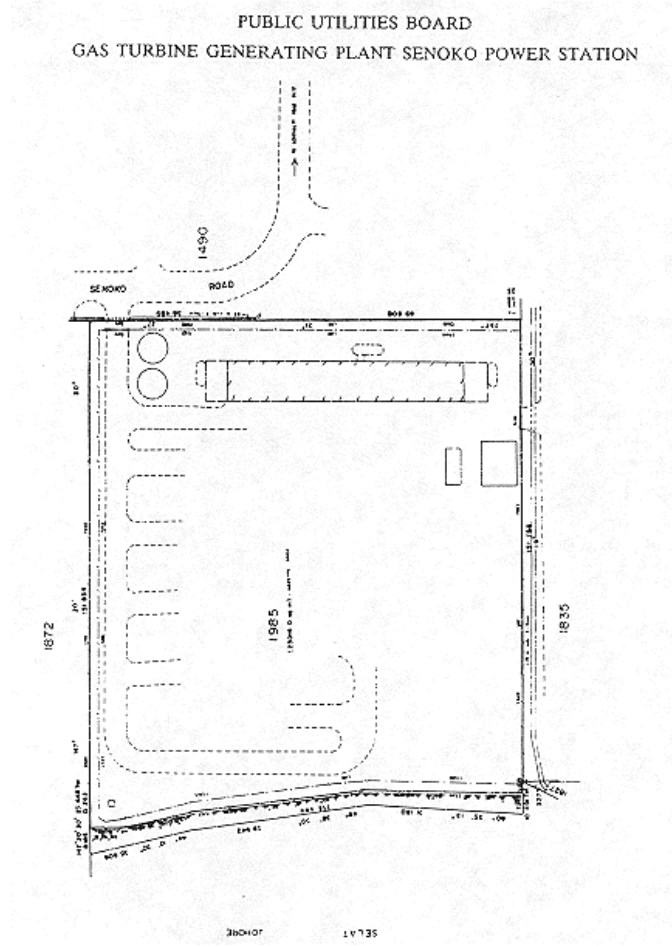
to the point of commencement.

The boundaries of the "PUBLIC UTILITIES BOARD GAS TURBINE GENERATING PLANT at Senoko Power Station" are more particularly delineated in the Plan set out hereunder.

THE SCHEDULE — *continued*

*First column*

*Second column*



THE SCHEDULE — *continued*

*First column*

*Second column*



Location Plan  
Approx Scale 1:10,000  
Geotex Surveyors Pte. Ltd.  
1 Goldhill Plaza  
#03-29, Podium Block  
Singapore 1130  
Tel: 2537422 (2 lines)  
Fax: 2531700

Job Title Survey and Preparation of Plans and Descriptions for Gazetting of Gas Turbine Plant Site at Senoko Mukim No. 13 Name: Sembawang  
Scale = 1:500  
Co-ordinates of Origin: N. 30,000 m E. 30,000 m  
Notes:  
(1) Horizontal datum adopted from Government Cadastral Plan  
(2) All grid values, dimensions and levels shown are in metres  
(3) Date of survey— October 1991.  
(4) H.W.M. = High Water Mark

[S 490/2014 wef 25/07/2014]

*First column*

*Second column*

The Authority

Protected Place

(12) S 71/92 [28.2.92] MANDAI RANGE  
Assistant Chief of  
General Staff  
(Training).

All that area comprised in State Land being part of Lot 60-15 and part of Lot 60-20, MUKIM NO.

THE SCHEDULE — *continued**First column**Second column*

14 (MANDAI) occupied by “MANDAI RANGE” containing an area of about 84,248 square metres and bounded approximately as follows:

Commencing at the northern-most gate post of the aforesaid “MANDAI RANGE” which point is 42,771.1 metres North and 21,931.7 metres East of the Survey Department origin of co-ordinates (30,000 metres North and 30,000 metres East), the boundaries run along successive lines of bearings and distances as under:

<i>Bearing</i>	<i>Distance in metres</i>
5° 05'	2.2
91° 46'	7.2
19° 33'	2.0
97° 39'	2.7
90° 01'	149.1
84° 12'	16.9
89° 41'	29.8
104° 29'	10.3
130° 05'	6.0
157° 11'	6.2
178° 53'	43.2
180° 44'	83.8
173° 48'	47.2
164° 46'	12.0
182° 31'	8.9
190° 14'	8.9
210° 41'	8.7
222° 11'	3.0
225° 52'	5.9

THE SCHEDULE — *continued**First column**Second column*

240° 46'	9.1
248° 03'	3.0
250° 59'	3.2
260° 25'	8.8
268° 54'	28.1
268° 57'	30.0
176° 12'	34.8
184° 15'	17.8
186° 02'	47.8
178° 07'	14.9
168° 27'	8.9
153° 39'	9.1
157° 11'	2.9
163° 42'	3.0
166° 30'	6.0
184° 52'	24.1
191° 43'	2.9
196° 06'	3.0
200° 14'	3.1
204° 53'	2.9
213° 24'	5.9
222° 57'	6.0
232° 02'	6.1
240° 18'	6.0
248° 18'	6.0
261° 19'	9.1
269° 55'	98.9
273° 33'	9.0

THE SCHEDULE — *continued*

<i>First column</i>	<i>Second column</i>
285° 47'	6.0
291° 19'	6.0
300° 37'	3.1
307° 36'	5.9
322° 39'	9.0
338° 25'	8.9
357° 14'	6.0
19° 13'	20.5
14° 12'	23.8
79° 52'	4.4
0° 49'	206.3
63° 33'	5.1
62° 34'	4.6 (across a drain)
334° 11'	8.9
346° 27'	5.9
355° 02'	3.0
0° 47'	6.0
4° 40'	47.1
20° 11'	32.9
12° 41'	31.5
284° 53'	11.4
294° 05'	6.1
5° 05'	4.1
5° 05'	6.4 (along a gate)

to the point of commencement.

The boundaries of “MANDAI RANGE” are more particularly delineated and edged pink on Survey Plan No. LE/91/59 GAZETTE filed in the



THE SCHEDULE — *continued*

<i>First column</i>	<i>Second column</i>
	office of the Director, Lands and Estates Organisation, Ministry of Defence, Singapore.

<i>First column</i>	<i>Second column</i>
The Authority	Protected Place

(13) S 80/92 [6.3.92] TUAS NAVAL BASE  
Officer  
Commanding, Tuas  
Naval Base.

All that area comprised in part of State Land Lots 46-4, 46-5, 46-7, 46-8, 54-1, 54-3, 838, State Land Lot 46-6, part of reclaimed land Lot 987 and part of the sea, Mukim No. 7 (TUAS), containing an area of about 774,092 square metres and bounded approximately as follows:

Commencing at the northern-most corner of the boundary of the aforesaid “TUAS NAVAL BASE” which point is 31,423.2 metres North and 8,496.8 metres East of the Survey Department origin of coordinates (30,000 metres North and 30,000 metres East), the boundaries run along successive lines of bearings and distances as under:

<i>Bearing</i>	<i>Distance in metres</i>
133° 23'	15.3
125° 55'	116.7
141° 19'	267.1
155° 29'	39.6
156° 27'	128.5
150° 53'	23.8
139° 44'	24.0
128° 35'	24.0
117° 28'	21.9
110° 44'	29.4

THE SCHEDULE — *continued*

<i>First column</i>	<i>Second column</i>
The Authority	Protected Place
108° 25'	27.3
106° 06'	27.3
103° 46'	27.3
101° 26'	27.2
99° 06'	27.4
92° 27'	23.3
88° 08'	23.2
83° 48'	23.2
79° 30'	23.2
75° 12'	23.2
70° 53'	23.2
66° 34'	23.2
62° 16'	23.2
57° 41'	18.5
52° 42'	18.5
47° 51'	12.4
140° 28'	347.2
230° 28'	5.0
140° 28'	134.0
230° 28'	331.4
230° 28'	19.9
239° 31'	537.1 (across the sea)
190° 07'	177.0 (across the sea)
319° 41'	726.7 (across the sea)
354° 47'	225.4 (across the sea)
50° 26'	301.0 (across the sea)
50° 26'	60.9

THE SCHEDULE — *continued*

<i>First column</i>	<i>Second column</i>
The Authority	Protected Place
50° 26'	228.3
336° 25'	40.2
335° 27'	36.8
321° 18'	261.6
305° 54'	114.6
313° 25'	17.3
43° 23'	21.6

to the point of commencement.

The boundaries of “TUAS NAVAL BASE” are more particularly delineated and edged pink on Survey Print No. LE/91/60 GAZETTE filed in the office of the Director, Lands and Estates Organisation, Ministry of Defence, Singapore.

<i>First column</i>	<i>Second column</i>
The Authority	Protected Place
(14) S 105/92 [20.3.92] Singapore Technologies Logistics Pte. Ltd.	TUAS JETTY

All that area comprised in part of Lot 1502, Mukim No. 7 (TUAS) part of foreshore and part of seabed to the south-west of the mainland occupied by “TUAS JETTY” containing an area of about 1.60 hectares and bounded approximately as follows:

Commencing at the northern-most corner of the perimeter fence of the aforesaid “TUAS JETTY” which point’s co-ordinates are 30,416.2 metres North and 4,204.5 metres East of the Survey Department origin of co-ordinates (30,000 metres North and 30,000 metres East), the boundaries run along successive lines of bearings and distances as under:

THE SCHEDULE — *continued*

<i>First column</i>	<i>Second column</i>
The Authority	Protected Place
<i>Bearing</i>	<i>Distance in metres</i>
149° 23'	52.0 (along chain link fence and gates)
239° 20'	52.1 (along chain link fence)
328° 22'	10.8 (along chain link fence)
229° 24'	48.0 (about one metre offset from slipway)
319° 04'	9.0 (along slipway)
49° 28'	50.1 (about one metre offset from slipway)
239° 23'	854.8 (about one metre offset from jetty)
202° 39'	13.5 (about one metre offset from jetty)
157° 29'	50.6 (about one metre offset from jetty)
247° 31'	18.0 (about one metre offset from jetty)
337° 29'	132.0 (about 2 metres offset from jetty)
67° 39'	18.0 (about one metre offset from jetty)
157° 28'	50.6 (about one metre offset from jetty)
111° 58'	13.2 (about one metre offset from jetty)
59° 23'	852.5 (about one metre offset from jetty)
330° 39'	20.0 (along chain link fence)

THE SCHEDULE — *continued*

<i>First column</i>	<i>Second column</i>
The Authority	Protected Place
59° 24'	52.1 (along chain link fence)

to the point of commencement.

The boundaries of “TUAS JETTY” are more particularly delineated and edged pink on Survey Plan No. LE/92/1/GAZETTE filed in the office of the Director, Lands and Estates Organisation, Ministry of Defence, Singapore.

<i>First column</i>	<i>Second column</i>
The Authority	Protected Place
(15) S 144/92 [27.3.92] Commander, HQ 2 PDF Command.	NEE SOON WAREHOUSE

All that area comprised in part of State Land Lots 15, 17 and part of State Reserve (Old Sembawang Road), Mukim No. 19 (NORTH SELETAR) occupied by “NEE SOON WAREHOUSE” containing an area of about 7,406 square metres and bounded approximately as follows:

Commencing at the southern-most corner of the perimeter fence of the aforesaid “NEE SOON WAREHOUSE” which point is 43,516.7 metres North and 26,683.2 metres East of the Survey Department origin of co-ordinates (30,000 metres North and 30,000 metres East), the boundaries run along successive lines of fence of bearings and distances as under:

<i>Bearing</i>	<i>Distance in metres</i>
276° 49'	25.0
296° 13'	39.9
330° 17'	4.2
26° 05'	36.8

THE SCHEDULE — *continued*

<i>First column</i>	<i>Second column</i>
The Authority	Protected Place
	19° 18' 23.8
	21° 16' 31.4
	44° 14' 18.1
	116° 06' 60.4
	207° 03' 6.0
	196° 16' 38.1
	205° 59' 32.0
	207° 26' 1.4 (across gate)
	206° 11' 12.2 (across gate)
	206° 14' 13.9

to the point of commencement.

The boundaries of “NEE SOON WAREHOUSE” are more particularly delineated and edged pink on Survey Plan No. LE/92/3/GAZETTE filed in the office of the Director, Lands and Estates Organisation, Ministry of Defence, Singapore.

<i>First column</i>	<i>Second column</i>
The Authority	Protected Place
(16) S 146/92 [27.3.92] S 212/92 The Director, Electricity Department, Public Utilities Board.	PUBLIC UTILITIES BOARD 230/66/22/6.6 KV SUBSTATION AT KAMPONG JAVA ROAD.  All that area comprised in part of Lot 801 TS No. 28 occupied by “PUB 230/66/22/6.6 KV SUBSTATION” containing an area of about 11,005 square metres and bounded approximately as follows:

Commencing at a point on the northern-most corner of the perimeter fence of the aforesaid “PUB SUBSTATION”, which point is 32,866.4 metres North and 29,286.6 metres East of the Survey Department origin of co-ordinates (30,000 metres North, 30,000 metres East), the boundaries

THE SCHEDULE — *continued*

<i>First column</i>	<i>Second column</i>
The Authority	Protected Place
	run along successive lines of fence of bearings and distances as under:
<i>Bearing</i>	<i>Distance in metres</i>
201° 42'	36.9
199° 35'	35.5
197° 45'	35.7
204° 53'	36.2
197° 08'	10.1
296° 43'	44.3
207° 45'	0.5
297° 03'	31.1
297° 11'	6.0 (along a gate)
297° 03'	14.1
351° 21'	35.3
77° 25'	7.9
69° 54'	26.8
55° 01'	36.0
30° 19'	21.3
314° 02'	9.8
350° 13'	0.2
82° 55'	24.7
	to a point where it meets a wall, thence along successive lines which follow a series of walls, gates and fence of bearings and distances as under:
<i>Bearing</i>	<i>Distance in metres</i>
82° 45'	4.7 (along a wall)
83° 06'	9.0 (along a gate)
83° 11'	4.7 (along a wall)

THE SCHEDULE — *continued*

<i>First column</i>	<i>Second column</i>
The Authority	Protected Place
83° 15'	15.4 (along a fence)
82° 05'	4.7 (along a wall)
82° 55'	8.3 (along a gate)
83° 03'	4.7 (along a wall)
84° 16'	3.8 (along a fence)

to the point of commencement.

The boundaries of the “PUB 230/66/22/6.6 KV SUBSTATION” are more particularly delineated and edged pink on Survey Plan No. 30017 filed in the office of the Chief Surveyor, Singapore.

<i>First column</i>	<i>Second column</i>
The Authority	Protected Place
(17) S 351/92 The President and Chief Executive Officer, Toppan Leefung Pte. Ltd.	The TOPPAN LEEFUNG PTE. LTD. UBI PLANT, 97 UBI AVENUE 4, SINGAPORE 408754

All that area comprised in part of Lot 3134 Pt, Mukim 23, Paya Lebar, occupied by Toppan Leefung Pte. Ltd. and Toppan Security Printing Pte. Ltd. containing an area of approximately 5,501.7 square metres and bounded approximately as follows:

Commencing at a point on the southern corner of the perimeter fence of the aforesaid Toppan Leefung Pte. Ltd. and Toppan Security Printing Pte. Ltd., which is approximately 35,149.244 metres North and 34,761.004 metres East of the Survey Department origin of co-ordinates, the boundary runs along a fence on a bearing of 66° 44' 44" for a distance of 43.784 metres (partly across the main entrance gate), thence along



THE SCHEDULE — *continued*

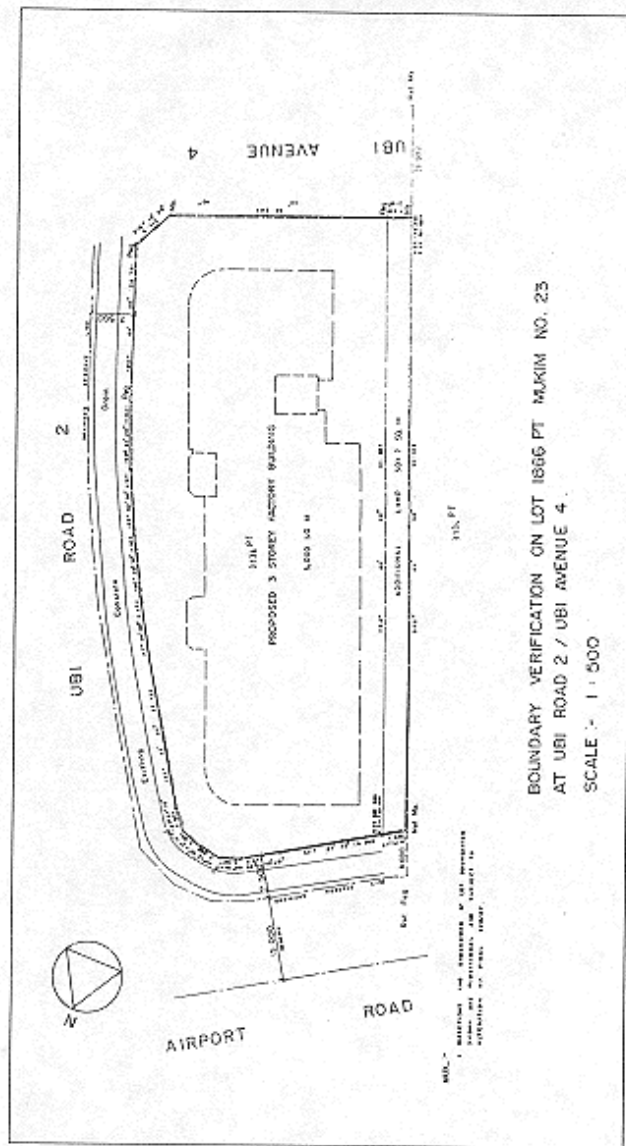
successive lines of fences of bearings and distances as under:

<i>Bearing</i>	<i>Distance in metres</i>
25° 12' 30"	8.712
338° 05' 30"	28.701
336° 34' 20"	11.921
333° 32' 00"	11.921
330° 30' 20"	11.923
327° 28' 00"	11.922
325° 56' 20"	26.724
317° 37' 10"	3.946
292° 34' 50"	3.991
270° 13' 50"	3.988
246° 19' 40"	3.987
236° 43' 20"	6.841
237° 07' 40"	19.366
237° 51' 14"	4.555
156° 44' 40"	111.125

to the point of commencement.

The boundaries of Toppan Leefung Pte. Ltd. and Toppan Security Printing Pte. Ltd. are more particularly delineated in the Plan set out hereunder.

THE SCHEDULE — continued



[S 637/2015 wef 04/11/2015]

THE SCHEDULE — *continued*

<i>First column</i>	<i>Second column</i>
The Authority	Protected Place
(18) S 505/92 [11.12.92] Assistant Chief of General Staff (Training).	PULAU TEKONG M203 RANGE

All that area comprised in parts of State Land Lots 482, 49, 503, 533, 545, 298, part of foreshore, part of seabed, part of Sungei Seminei and part of State Reserve, Mukim No. 33 (PULAU TEKONG) occupied by “PULAU TEKONG M203 RANGE” containing an area of about 168,078 square metres and bounded approximately as follows:

Commencing at a point on the northern-most corner of the boundary of the aforesaid “PULAU TEKONG M203 RANGE” which point is 42,884.0 metres North and 50,435.6 metres East of the Survey Department origin of co-ordinates (30,000 metres North and 30,000 metres East), the boundaries run along successive lines of bearings and distances as under:

<i>Bearing</i>	<i>Distance in metres</i>
109° 15'	170.0 (partly across Sungei Seminei)
176° 53'	17.7 (to meet the northern edge of cattle fence)
176° 53'	39.3 (along cattle fence)
175° 21'	50.4 (along cattle fence)
167° 22'	22.9 (along cattle fence)
162° 29'	27.7 (along cattle fence)
158° 34'	25.1 (along cattle fence)
143° 50'	32.0 (along cattle fence)
183° 58'	12.7 (along cattle fence)
200° 13'	14.9 (along cattle fence)
189° 49'	85.2 (along cattle fence)

THE SCHEDULE — *continued*

<i>First column</i>	<i>Second column</i>
The Authority	Protected Place
189° 49'	277.5 (partly across the sea)
295° 43'	410.0 (across the sea)
26° 02'	520.0 (partly across the sea)

to the point of commencement.

The boundaries of “PULAU TEKONG M203 RANGE” are more particularly delineated and edged pink on Survey Plan No. LE/92/16 GAZETTE filed in the office of the Director, Lands and Estates Organisation, Ministry of Defence, Singapore.

*[S 506/93 wef 17/12/1993]*

*[S 458/96 wef 01/01/1995]*

LEGISLATIVE HISTORY  
PROTECTED PLACES (CONSOLIDATION) ORDER  
(CHAPTER 256, O 4)

This Legislative History is provided for the convenience of users of the Protected Places (Consolidation) Order. It is not part of this Order.

- 1. G. N. No. S 319/1991 — Protected Places (Consolidation) Order 1991**  
Date of commencement : Date not available
- 2. G. N. No. S 366/1993 — Protected Places (Consolidation) (Amendment No. 3) Order 1993**  
Date of commencement : 10 September 1993
- 3. G. N. No. S 506/1993 — Protected Places (Consolidation) (Amendment No. 4) Order 1993**  
Date of commencement : 17 December 1993
- 4. 1993 Revised Edition — Protected Places (Consolidation) Order**  
Date of operation : 1 April 1993
- 5. G. N. No. S 458/1996 — Protected Places (Consolidation) (Amendment) Order 1996**  
Date of commencement : 1 January 1995
- 6. G. N. No. S 40/1998 — Protected Places (Consolidation) (Amendment) Order 1998**  
Date of commencement : 23 January 1998
- 7. G. N. No. S 418/2000 — Protected Places (Consolidation) (Amendment) Order 2000**  
Date of commencement : 20 September 2000
- 8. G. N. No. S 75/2005 — Protected Places (Consolidation) (Amendment) Order 2005**  
Date of commencement : 15 February 2005
- 9. G. N. No. S 344/2005 — Protected Places (Consolidation) (Amendment No. 2) Order 2005**  
Date of commencement : 3 June 2005
- 10. G. N. No. S 298/2006 — Protected Places (Consolidation) (Amendment) Order 2006**  
Date of commencement : 8 June 2006

- 11. G. N. No. S 124/2008 — Protected Places (No. 2) Order 2008**  
Date of commencement : 14 March 2008
- 12. G. N. No. S 591/2009 — Protected Places (Consolidation) (Amendment) Order 2009**  
Date of commencement : 1 December 2009
- 13. G. N. No. S 620/2009 — Protected Places (Consolidation) (Amendment No. 2) Order 2009**  
Date of commencement : 15 December 2009
- 14. G. N. No. S 611/2010 — Protected Places (Consolidation) (Amendment) Order 2010**  
Date of commencement : 26 October 2010
- 15. G. N. No. S 552/2011 — Protected Places (Consolidation) (Amendment) Order 2011**  
Date of commencement : 29 September 2011
- 16. G.N. No. S 61/2012 — Protected Places (Consolidation) (Amendment) Order 2012**  
Date of commencement : 13 February 2012
- 17. G.N. No. S 19/2013 — Protected Places (Consolidation) (Amendment) Order 2013**  
Date of commencement : 16 January 2013
- 18. G.N. No. S 486/2014 — Protected Places (Consolidation) (Amendment No. 4) Order 2014**  
Date of commencement : 24 July 2014
- 19. G.N. No. S 490/2014 — Protected Places (Miscellaneous Amendments) Order 2014**  
Date of commencement : 25 July 2014
- 20. G.N. No. S 637/2015 — Protected Places (Miscellaneous Amendments) (No. 2) Order 2015**  
Date of commencement : 4 November 2015
- 21. G.N. No. S 230/2016 — Protected Places (No. 3) Order 2016**  
Date of commencement : 24 May 2016
- 22. G.N. No. S 295/2017 — Protected Places (No. 3) Order 2017**  
Date of commencement : 9 June 2017

**23. G.N. No. S 399/2017 — Protected Places (Miscellaneous Amendments)  
Order 2017**

Date of commencement : 19 July 2017

**24. G.N. No. S 585/2018 — Protected Places (No. 9) Order 2018**

Date of commencement : 26 September 2018