

PROTECTED AREAS AND PROTECTED PLACES ACT
(CHAPTER 256, SECTION 5(1))

PROTECTED PLACES (CONSOLIDATION) ORDER

ARRANGEMENT OF PARAGRAPHS

Paragraph

1. Citation
 2. Protected places, permits and authorised officers
The Schedule
-

Citation

1. This Order may be cited as the Protected Places (Consolidation) Order.

Protected places, permits and authorised officers

2. The premises described in the second column of the Schedule are declared to be protected places for the purposes of the Protected Areas and Protected Places Act, and no person shall be in those premises unless he is in possession of a pass-card or permit issued by the authority specified in the first column of the Schedule or has received the permission of an authorised officer on duty at the premises to enter the premises.

THE SCHEDULE

<i>First column</i>	<i>Second column</i>
The Authority	Protected Place
(1) S 319/91 [26.7.91] The Director, Electricity Department, Public Utilities Board.	(1) Deleted by S 124/2008, wef 14/03/2008. (2) PUBLIC UTILITIES BOARD 230 KV SUBSTATION AT UPPER JURONG ROAD.

THE SCHEDULE — *continued*

First column
The Authority

Second column
Protected Place

All that area comprised wholly on part of Lot 2271 MK No. 16 occupied by “PUB 230 kv Substation” containing an area of about 15,624.4 square metres and bounded approximately as follows:

Commencing at a point on the south-eastern corner of the perimeter fence of the aforesaid “PUB 230 kv Substation” which point is 34,475.152 metres North and 11,468.205 metres East of the Survey Department origin of co-ordinates, the boundaries run along successive lines of fences of bearings and distances as under:

<i>Bearing</i>	<i>Distance in metres</i>
270° 07'	88.6 (along fence)
347° 42'	4.7 (along fence)
331° 34'	8.9
0° 00'	154.6
90° 25'	1.7
157° 08'	5.0
168° 47'	2.6
178° 00'	5.2
88° 48'	1.0 (at pillar of gate)
89° 33'	7.2 (along pillars of gate)
89° 54'	1.2 (along pillars of side gate)
90° 18'	1.0 (along fence)
2° 25'	7.8
16° 35'	2.7
25° 32'	2.8
87° 50'	56.4

THE SCHEDULE — *continued*

<i>First column</i>	<i>Second column</i>
The Authority	Protected Place
150° 13'	3.8
90° 58'	1.3 (at pillar of side gate)
90° 45'	1.1
91° 03'	7.2 (along pillars of main gate)
91° 06'	1.0 (along fence)
19° 00'	4.2
87° 46'	6.6
180° 02'	170.8

to the point of Commencement.

(3) Deleted by S 124/2008, wef 14/03/2008.

(4) PUBLIC UTILITIES BOARD 230 KV
SUBSTATION AT WEST ADMIRALTY
ROAD.

All that area comprised partly in Lot 1680 and partly in Lot 1681Pt MK No. 13 occupied by "PUB 230/66 KV Substation" containing an area of 6,968.2 square metres and bounded approximately as follows:

Commencing at a point on the south-western corner of the perimeter fence of the aforesaid "PUB Substation" which point is 49,254.244 metres North and 25,466.347 metres East of the Survey Department of origin of co-ordinates, the boundaries run along successive lines of fences of bearings and distances as under:

<i>Bearing</i>	<i>Distance in metres</i>
333° 54'	10.1 (along fence fronting Sembawang)
52° 32'	0.4
334° 00'	32.1

THE SCHEDULE — *continued*

<i>First column</i>	<i>Second column</i>
The Authority	Protected Place
333° 31'	12.6
330° 01'	16.1
48° 34'	0.5
329° 41'	18.5
329° 33'	3.3
37° 14'	17.7
64° 13'	26.8 (along fence fronting Admiralty Road West)
154° 22'	7.4
62° 56'	0.9
63° 57'	10.2 (along a gate)
66° 57'	0.6 (along a fence)
335° 08'	7.4
64° 04'	18.1
154° 22'	41.8
154° 27'	25.0
154° 17'	22.5
63° 35'	0.5
155° 14'	12.0
244° 27'	44.4
244° 38'	25.6

to the point of commencement.

The boundaries of the Public Utilities Board 230 KV Substations at Pasir Panjang Road, Upper Jurong Road, Ubi Avenue 3 and West Admiralty Road are delineated in the Plans set out hereunder.

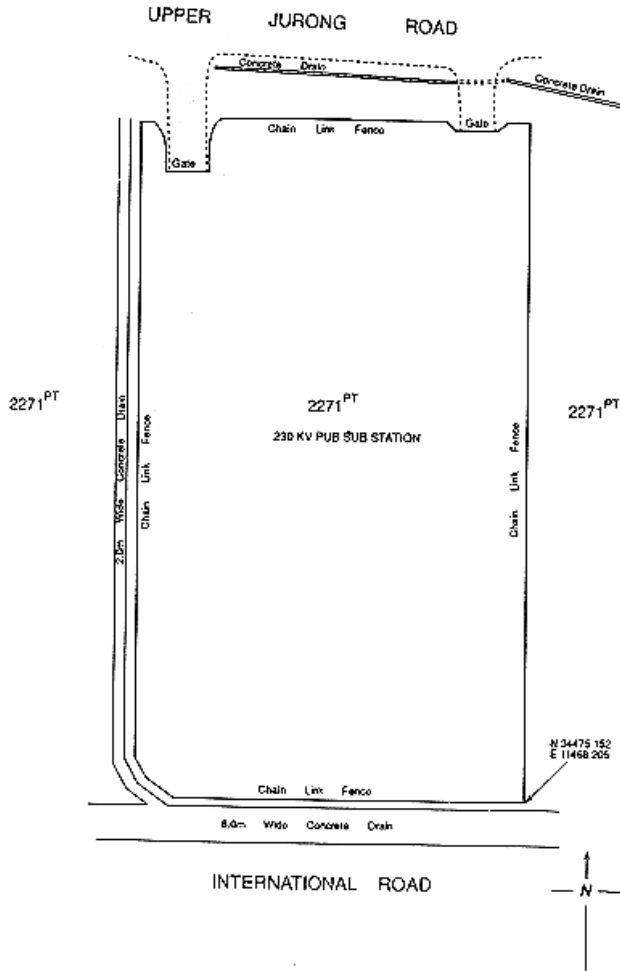
(1) *Form 1 — Deleted by S 124/2008, wef 14/03/2008.*

(2) Public Utilities Board 230 KV Substation at Upper Jurong Road

THE SCHEDULE — *continued*

First column
The Authority

Second column
Protected Place

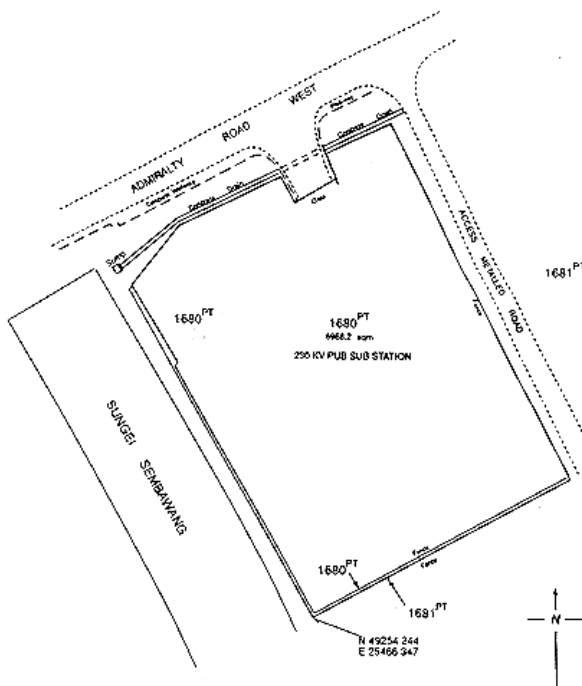


(3) *Form 3 — Deleted by S 124/2008, wef 14/03/2008.*

(4) Public Utilities Board 230 KV Substation at West Admiralty Road

THE SCHEDULE — *continued*

<i>First column</i>	<i>Second column</i>
The Authority	Protected Place



<i>First column</i>	<i>Second column</i>
The Authority	Protected Place

- (2) S 330/91 [2.8.91] SINGAPORE SHIPBUILDING & General Manager, ENGINEERING LIMITED PREMISES, NO. Singapore Shipbuilding 16 BENOI ROAD SINGAPORE 2262. & Engineering Limited.

All that area comprised wholly in Lot 203 MK No. 7 (TUAS) occupied by the “SINGAPORE SHIPBUILDING & ENGINEERING LIMITED” containing an area of about 20,224.2 square metres and bounded approximately as follows:

THE SCHEDULE — *continued*

First column
The Authority

Second column
Protected Place

Commencing at the southern-most corner of the perimeter fence of the aforesaid “SINGAPORE SHIPBUILDING & ENGINEERING LIMITED” which point is 31,480.060 metres North and 10,772.082 metres East of the Survey Department origin of co-ordinates, the boundaries run along successive lines of fences of bearings and distances as under:

<i>Bearing</i>	<i>Distance in metres</i>
315° 17'	76.6 (along bottom of slope)
315° 15'	87.4 (along bottom of slope)
82° 52'	36.2
49° 12'	0.1
82° 54'	60.8
82° 46'	51.9
82° 44'	53.5
172° 35'	5.3
262° 56'	4.8 (along concrete access)
187° 24'	0.2
173° 03'	2.6 (at bin centre)
157° 52'	0.3
83° 31'	4.4
172° 22'	4.9 (along a wall)
173° 00'	8.0 (across an access road)
172° 53'	4.9 (along a wall)
84° 32'	0.3

THE SCHEDULE — *continued*

<i>First column</i>	<i>Second column</i>
The Authority	Protected Place
172° 48'	55.1
265° 47'	0.3
172° 33'	6.1 (partly along a wall)
172° 33'	7.7 (across an access)
172° 46'	6.2 (partly along a wall)
88° 38'	0.3
172° 52'	13.8 (along bottom of slope)
177° 12'	3.6 (along bottom of slope)
219° 29'	16.2 (along bottom of slope)
258° 39'	3.6
262° 52'	45.4
262° 41'	41.5

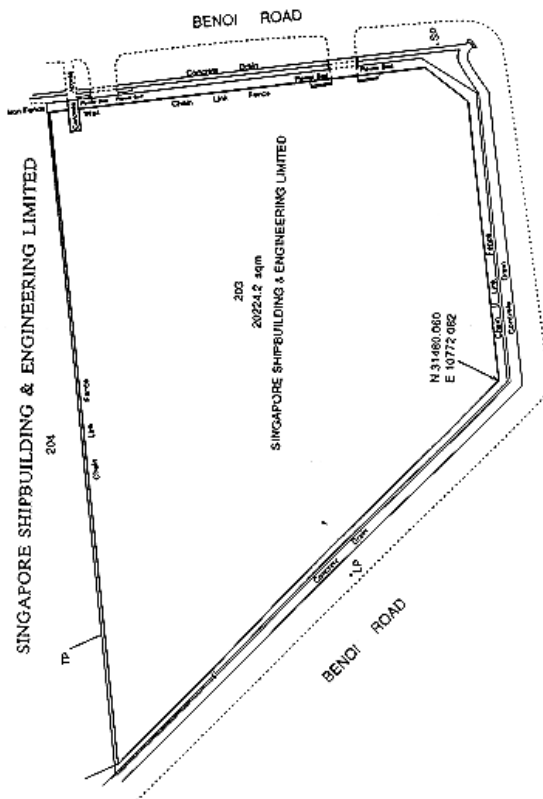
to the point of commencement.

The boundaries of “SINGAPORE SHIP-BUILDING & ENGINEERING LIMITED” are delineated in the Plan set out hereunder.

THE SCHEDULE — *continued*

First column
The Authority

Second column
Protected Place



First column
The Authority

Second column
Protected Place

- (3) S 345/91 (1) [8.8.91] (1) PUBLIC UTILITIES BOARD 230/66/22KV
The Director, SUBSTATION AT KALLANG BASIN.
Electricity
Department.

All that area comprised wholly in Lots 6541,5241 and 6535 MK No. 24 occupied by “PUB 230/66/22KV substation” containing an area of 17,417.2 square metres and bounded approximately as follows:

THE SCHEDULE — *continued*

First column
The Authority

Second column
Protected Place

Commencing at the southern-west point of the perimeter fence of the aforesaid “PUB substation” which point is 33,514.518 metres North and 32,160.033 metres East of the Survey Department of origin of co-ordinates, the boundaries run along successive lines of fences of bearings and distances as under:

<i>Bearing</i>	<i>Distance in metres</i>
275° 14'	37.6 (along fence beside a concrete drain)
327° 10'	8.5
310° 30'	4.9
327° 14'	26.1
328° 50'	38.0
14° 51'	7.3 (along fence)
57° 49'	28.9 (along fence fronting Kallang Bahru)
54° 32'	0.2
58° 11'	20.3
58° 19'	1.2 (along a side gate)
58° 12'	9.5 (to another side gate)
59° 55'	1.2 (along a side gate)
57° 38'	18.2 (along fence)
59° 32'	2.8
82° 25'	2.8
32° 16'	0.1
58° 08'	3.4 (along a gate)
97° 30'	0.1
57° 16'	14.2 (along a fence)

THE SCHEDULE — *continued*

<i>First column</i>	<i>Second column</i>
The Authority	Protected Place
7° 06'	0.1
55° 01'	2.1
58° 05'	5.3 (along a gate)
58° 24'	46.8
110° 12'	11.4
148° 15'	30.7 (along fence fronting Geylang Bahru)
148° 30'	36.0
149° 46'	5.6
151° 23'	6.1
152° 54'	18.0 (across a concrete drain)
238° 02'	58.7
238° 15'	19.4
237° 04'	2.5
238° 26'	44.0
239° 28'	7.8
238° 51'	0.2
255° 59'	2.9 (across a concrete drain)

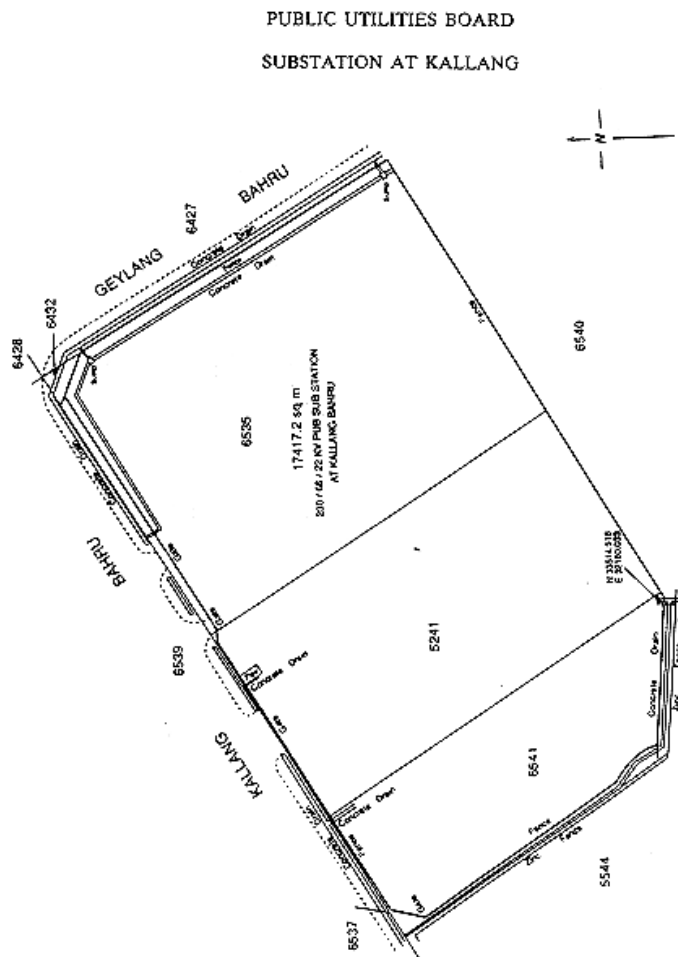
to the point of commencement.

The boundaries of the “PUB 230/66/22KV substation” are more particularly delineated in the Plan set out hereunder.

THE SCHEDULE — *continued*

First column
The Authority

Second column
Protected Place



The Director, Electricity
Department.

(2) PUBLIC UTILITIES BOARD 230/66/22KV
SUBSTATION AT AYER RAJAH
CRESCENT.

All that area comprised wholly in Lot 1711 MK
No. 3 occupied by "PUB 230/66/22KV substation"
containing an area of 13,518.6 square metres and
bounded approximately as follows:

THE SCHEDULE — *continued*

First column
The Authority

Second column
Protected Place

Commencing at the south-easterly corner of the perimeter fence of the aforesaid “PUB substation” which point is 30,997.930 metres North and 23,042.284 metres East of the Survey Department of origin of co-ordinates, the boundaries run along successive lines of fences of bearings and distances as under:

<i>Bearing</i>	<i>Distance in metres</i>
292° 17'	2.7 (along fence)
293° 40'	0.8 (concrete gate pillar)
20° 31'	0.6
292° 47'	5.9 (along gate)
204° 24'	0.6 (concrete gate pillar)
293° 32'	0.8
305° 21'	5.8 (along fence)
303° 26'	32.5
292° 53'	64.8
342° 04'	2.9
339° 53'	9.8
22° 25'	15.5
22° 55'	1.3 (along small gate)
22° 36'	9.2 (along big gate)
22° 25'	1.2 (along small gate)
23° 28'	0.2 (across concrete gate pillar)
292° 52'	0.1 (along brick wall)
22° 52'	23.0 (along outer face of brick wall fronting Ayer Rajah Crescent)
112° 38'	4.3

THE SCHEDULE — *continued*

<i>First column</i>	<i>Second column</i>
The Authority	Protected Place
21° 23'	0.9
22° 28'	7.3 (along big gate)
22° 12'	0.8 (across concrete gate pillar)
22° 32'	1.0 (along small gate)
292° 41'	4.4 (along outer face of brick wall)
23° 01'	0.4
74° 10'	0.1 (along fence)
22° 55'	31.5
68° 33'	13.0

to the point of commencement.

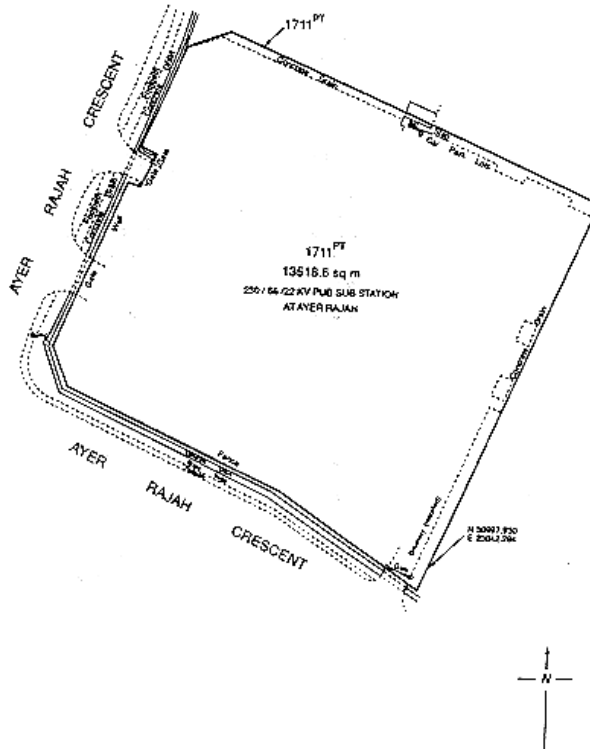
The boundaries of the “PUB 230/66/22KV substation” are more particularly delineated in the Plan set out hereunder.

THE SCHEDULE — *continued*

First column
The Authority

Second column
Protected Place

PUBLIC UTILITIES BOARD
SUBSTATION AT AYER RAJAH CRESCENT



The Director, Electricity Department. (3) PUBLIC UTILITIES BOARD 230/66/22KV SUBSTATION AT TAMPINES ROAD.

All that area comprised wholly in Lot 999 MK No. 29 occupied by “PUB 230/66/22KV substation” containing an area of 14,828.7 square metres and bounded approximately as follows:

Commencing at the south-easterly corner of the perimeter fence of the aforesaid “PUB substation” which point is 39,107.490 metres North and 39,971.614 metres East of the Survey Department of origin of co-ordinates, the boundaries run along

THE SCHEDULE — *continued*

<i>First column</i>	<i>Second column</i>
The Authority	Protected Place
	successive lines of fences of bearings and distances as under:
<i>Bearing</i>	<i>Distance in metres</i>
278° 01'	32.3 (along fence)
278° 11'	26.9
278° 06'	33.0
278° 11'	26.8
278° 10'	36.1
8° 06'	32.8
8° 07'	24.0
8° 12'	36.2
87° 48'	7.1 (along fence fronting Tampines Road)
185° 09'	1.0
186° 17'	3.8 (along a gate)
97° 33'	13.0 (along fence)
98° 20'	1.2
98° 34'	3.8
98° 03'	7.8 (along a gate)
95° 44'	1.1
7° 18'	9.7
87° 35'	11.6
89° 25'	30.5
101° 19'	29.1
111° 57'	6.3
125° 17'	9.3
140° 18'	33.0

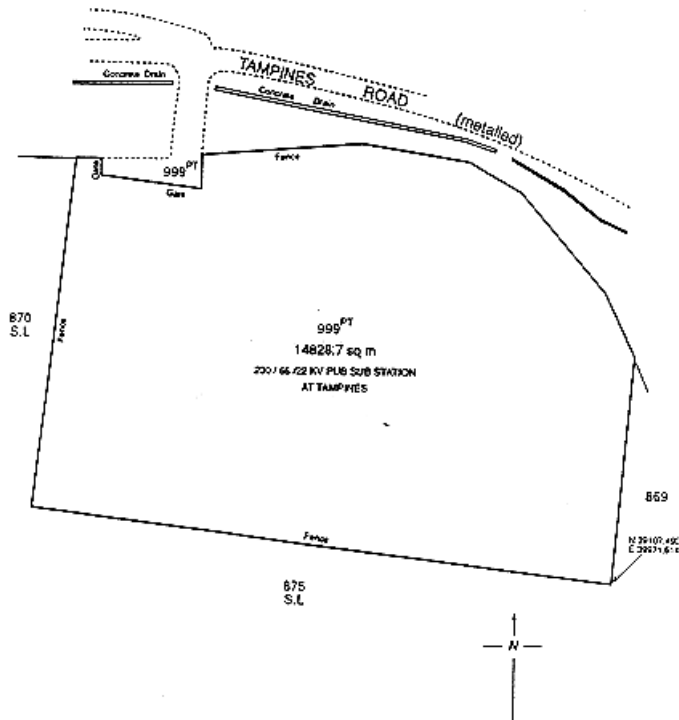
THE SCHEDULE — *continued*

<i>First column</i>	<i>Second column</i>
The Authority	Protected Place
157° 26'	6.1
146° 00'	12.8
188° 05'	32.1
188° 09'	29.8

to the point of commencement.

The boundaries of the “PUB 230/66/22KV substation” are more particularly delineated in the Plan set out hereunder:

PUBLIC UTILITIES BOARD
SUBSTATION AT TAMPINES ROAD



THE SCHEDULE — *continued*

<i>First column</i>	<i>Second column</i>
The Authority	Protected Place
The Director, Electricity Department.	(4) PUBLIC UTILITIES BOARD 230/66/22KV SUBSTATION AT CHOA CHU KANG ROAD.

All that area comprised wholly in Lot 1529 MK No. 10 occupied by “PUB 230/66/22KV substation” containing an area of 8,313.9 square metres and bounded approximately as follows:

Commencing at the south-westerly corner of the perimeter fence of the aforesaid “PUB substation” which point is 39,750.911 metres North and 19,303.460 metres East of the Survey Department of origin of co-ordinates, the boundaries run along successive lines of fences of bearings and distances as under:

<i>Bearing</i>	<i>Distance in metres</i>
1° 42'	33.9 (along fence)
1° 44'	34.7
1° 57'	33.2
80° 01'	10.3 (along fence fronting Choa Chu Kang Road)
73° 22'	13.0
68° 05'	15.8
183° 44'	5.3
91° 01'	0.6
91° 30'	11.5 (along a gate)
92° 12'	2.0 (along a fence)
1° 43'	8.8
66° 42'	15.9
67° 12'	11.3
181° 25'	23.0
181° 57'	32.8

THE SCHEDULE — *continued*

<i>First column</i>		<i>Second column</i>
The Authority		Protected Place
	181° 58'	27.7
	182° 33'	42.1
	271° 12'	33.8
	271° 28'	23.0
	252° 43'	9.7
	271° 25'	9.0

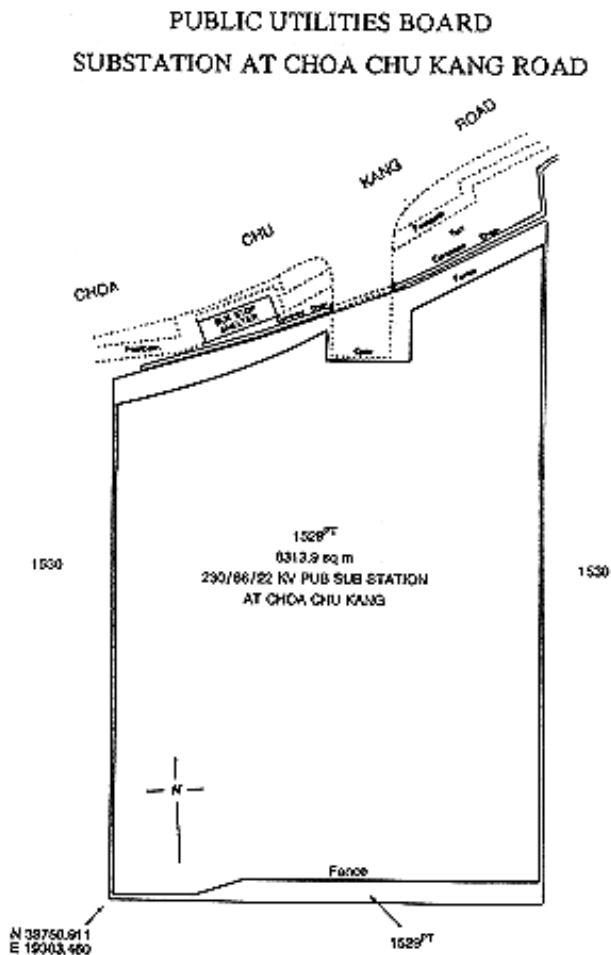
to the point of commencement.

The boundaries of the “PUB 230/66/22KV substation” are more particularly delineated in the Plan set out hereunder:

THE SCHEDULE — continued

First column
The Authority

Second column
Protected Place



(4) [Deleted by S 789/2019 wef 01/12/2019]

(5) [Deleted by S 408/2020 wef 30/05/2020]

(6) [Deleted by S 944/2020 wef 06/11/2020]

THE SCHEDULE — *continued*

<i>First column</i>	<i>Second column</i>
The Authority	Protected Place
(7) S 422/91 [27.9.91] Chief Executive Officer (VP/GM), Singapore Electronic & Engineering Limited	SINGAPORE ELECTRONIC & ENGINEERING (PRIVATE) LIMITED PREMISES.

All that area comprised in part of Lot 8882 No. 18 (ANG MO KIO), occupied by “SINGAPORE ELECTRONIC & ENGINEERING (PRIVATE) LIMITED PREMISES” containing an area of about 14,760 square metres and bounded approximately as follows:

Commencing at a point on the northern-most corner of the perimeter fence of the aforesaid “SINGAPORE ELECTRONIC & ENGINEERING (PRIVATE) LIMITED PREMISES” which point is 41,566.9 metres North and 29,828.7 metres East of the Survey Department origin of co-ordinates (N 30,000m, E. 30,000 m), the boundaries run along successive lines of fence of bearings and distances as under:

<i>Bearing</i>	<i>Distance in metres</i>
94° 47'	6.0
100° 08'	6.0
111° 08'	6.2
120° 01'	6.0
126° 29'	5.7
135° 50'	5.8
142° 49'	6.0
150° 14'	5.9
162° 53'	6.0
169° 54'	6.2

THE SCHEDULE — *continued*

<i>First column</i>	<i>Second column</i>
The Authority	Protected Place
179° 00'	6.2
184° 50'	63.6
267° 19'	32.6
267° 33'	107.6 (along two successive gates)
353° 41'	2.0
356° 03'	6.6 (along a gate)
359° 28'	0.9
to meet a building wall, thence along successive lines following the building wall of bearings and distances as under:	
<i>Bearing</i>	<i>Distance in metres</i>
269° 06'	0.1
359° 06'	0.1
272° 19'	0.1
352° 11'	0.3
82° 11'	0.1
357° 11'	2.5 (successively along a wall, a gate and a wall)
269° 59'	0.1
356° 14'	0.1
to meet a fence, thence along successive lines of fence of bearings and distances as under:	
<i>Bearing</i>	<i>Distance in metres</i>
267° 47'	1.7
353° 59'	18.8
351° 32'	21.1

THE SCHEDULE — *continued*

<i>First column</i>	<i>Second column</i>																
The Authority	Protected Place																
	to meet a wall, thence along successive lines following the wall of bearings and distances as under:																
	<table border="0"> <thead> <tr> <th style="text-align: left;"><i>Bearing</i></th> <th style="text-align: left;"><i>Distance in metres</i></th> </tr> </thead> <tbody> <tr> <td>258° 14'</td> <td>0.2</td> </tr> <tr> <td>348° 14'</td> <td>6.5</td> </tr> </tbody> </table>	<i>Bearing</i>	<i>Distance in metres</i>	258° 14'	0.2	348° 14'	6.5										
<i>Bearing</i>	<i>Distance in metres</i>																
258° 14'	0.2																
348° 14'	6.5																
	to meet a gate, thence along a line following the gate on an approximate bearing of 347° 56' and for a distance of approximately 10.7 metres to meet a wall, thence along successive lines following the wall of bearings and distances as under:																
	<table border="0"> <thead> <tr> <th style="text-align: left;"><i>Bearing</i></th> <th style="text-align: left;"><i>Distance in metres</i></th> </tr> </thead> <tbody> <tr> <td>347° 03'</td> <td>12.8</td> </tr> <tr> <td>31° 31'</td> <td>10.3</td> </tr> <tr> <td>83° 51'</td> <td>2.5</td> </tr> <tr> <td>173° 51'</td> <td>0.1</td> </tr> </tbody> </table>	<i>Bearing</i>	<i>Distance in metres</i>	347° 03'	12.8	31° 31'	10.3	83° 51'	2.5	173° 51'	0.1						
<i>Bearing</i>	<i>Distance in metres</i>																
347° 03'	12.8																
31° 31'	10.3																
83° 51'	2.5																
173° 51'	0.1																
	to meet a fence, thence along successive lines of fence of bearings and distances as under:																
	<table border="0"> <thead> <tr> <th style="text-align: left;"><i>Bearing</i></th> <th style="text-align: left;"><i>Distance in metres</i></th> </tr> </thead> <tbody> <tr> <td>83° 36'</td> <td>33.3</td> </tr> <tr> <td>166° 25'</td> <td>0.6</td> </tr> <tr> <td>78° 31'</td> <td>15.3</td> </tr> <tr> <td>351° 01'</td> <td>0.7</td> </tr> <tr> <td>72° 56'</td> <td>36.5</td> </tr> <tr> <td>80° 58'</td> <td>13.0</td> </tr> <tr> <td>82° 46'</td> <td>15.4</td> </tr> </tbody> </table>	<i>Bearing</i>	<i>Distance in metres</i>	83° 36'	33.3	166° 25'	0.6	78° 31'	15.3	351° 01'	0.7	72° 56'	36.5	80° 58'	13.0	82° 46'	15.4
<i>Bearing</i>	<i>Distance in metres</i>																
83° 36'	33.3																
166° 25'	0.6																
78° 31'	15.3																
351° 01'	0.7																
72° 56'	36.5																
80° 58'	13.0																
82° 46'	15.4																
	to the point of commencement.																
	The boundaries of “SINGAPORE ELECTRONIC & ENGINEERING (PRIVATE)																

THE SCHEDULE — *continued*

*First column**Second column*

The Authority

Protected Place

LIMITED PREMISES” are more particularly delineated and edged pink on survey Plan No. 20009 filed in the office of the Chief Surveyor, Singapore.

*First column**Second column*(8) [*Deleted by S 399/2017 wef 19/07/2017*]*First column**Second column*

The Authority

Protected Place

(9) S 525/91 [29.11.91]

Senior Terminals Security
Manager, PSA Corporation
Limited1. [*Deleted by S 585/2018 wef 26/09/2018*]Director (Corporate
Development), PSA
Corporation Limited2. [*Deleted by S 620/2009 wef 15/12/2009*]Senior Terminals Security
Manager, PSA Corporation
Limited

3. SEMBAWANG WHARVES.

All that area occupied by “SEMBAWANG WHARVES” containing an area of approximately 312,500 square metres and bounded by Fiji Road, Jamaica Road, Sembawang Shipyard, H M Dockyard, Stores Road, Stores Basin, Sembawang Park and Deptford Road.

The boundary commences at the westernmost corner of the aforesaid “SEMBAWANG WHARVES” which point bears the co-ordinates North 49,342.274 metres and East 27,216.569 metres of the Singapore Land Authority SVY 21 Datum and runs approximately as follows:

THE SCHEDULE — *continued*

<i>First column</i>	<i>Second column</i>	
The Authority	Protected Place	
	<i>Northing</i>	<i>Easting</i>
	49,342.274	27,216.569
	49,383.623	27,239.331
	49,386.861	27,240.369
	49,406.042	27,251.743
	49,408.954	27,256.526
	49,439.994	27,314.658
	49,470.282	27,370.933
	49,478.734	27,386.622
	49,485.217	27,398.838
	49,490.240	27,408.064
	49,489.903	27,407.978
	49,486.849	27,412.203
	49,495.094	27,426.829
	49,506.771	27,447.666
	49,522.803	27,476.531
	49,558.642	27,542.619
	49,584.126	27,589.381
	49,563.317	27,625.639
	49,545.591	27,656.885
	49,524.579	27,693.334
	49,512.606	27,714.162
	49,506.148	27,720.383
	49,498.448	27,723.726
	49,490.251	27,723.287
	49,367.320	27,654.402
	49,327.834	27,633.993

THE SCHEDULE — *continued*

<i>First column</i>	<i>Second column</i>
The Authority	Protected Place
49,324.491	27,634.413
49,324.480	27,634.615
49,321.503	27,639.675
49,319.456	27,642.940
49,318.621	27,644.951
49,306.532	27,666.063
49,309.041	27,667.707
49,362.714	27,698.153
49,352.393	27,716.567
49,345.243	27,729.151
49,337.805	27,742.036
49,336.487	27,741.436
49,335.211	27,742.644
49,332.835	27,746.785
49,335.447	27,748.622
49,328.286	27,761.364
49,323.858	27,769.138
49,299.424	27,811.861
49,298.193	27,814.483
49,298.921	27,816.904
49,294.152	27,826.134
49,418.344	27,896.971
49,436.914	27,907.607
49,432.845	27,915.070
49,428.228	27,923.827
49,409.221	27,957.193
49,402.618	27,953.432

THE SCHEDULE — *continued*

<i>First column</i>	<i>Second column</i>
The Authority	Protected Place
49,397.173	27,962.990
49,403.777	27,966.751
49,394.125	27,983.695
49,331.379	27,947.978
49,310.869	27,936.303
49,270.023	27,913.052
49,144.539	27,840.798
49,135.868	27,855.999
49,120.928	27,847.477
49,060.531	27,953.363
49,204.882	28,035.533
49,490.843	28,198.423
49,523.064	28,216.814
49,523.813	28,217.620
49,524.347	28,218.694
49,534.917	28,277.248
49,532.348	28,277.649
49,531.656	28,282.298
49,531.189	28,292.387
49,530.623	28,302.471
49,528,379	28,312.319
49,526.356	28,322.520
49,524.826	28,332.200
49,524.009	28,341.565
49,512.554	28,332.037
49,505.888	28,331.358
49,502.035	28,329.033

THE SCHEDULE — *continued*

<i>First column</i>		<i>Second column</i>
The Authority		Protected Place
	49,494.968	28,331.228
	49,464.222	28,319.241
	49,459.292	28,316.802
	49,456.660	28,316.198
	49,443.757	28,311.595
	49,411.690	28,318.489
	49,391.358	28,325.782
	49,320.824	28,294.648
	49,287.256	28,262.325
	49,216.070	28,194.101
	49,206.827	28,190.555
	49,190.406	28,184.503
	49,170.057	28,176.685
	49,119.571	28,157.523
	49,039.203	28,127.767
	49,038.474	28,125.064
	49,034.967	28,121.225
	49,019.994	28,114.291
	48,997.663	28,103.972
	48,986.153	28,096.359
	48,946.197	28,086.729
	48,891.087	28,037.195
	48,890.310	28,015.309
	48,890.263	28,012.609
	48,918.562	27,977.621
	48,958.734	27,896.637
	48,959.885	27,894.195

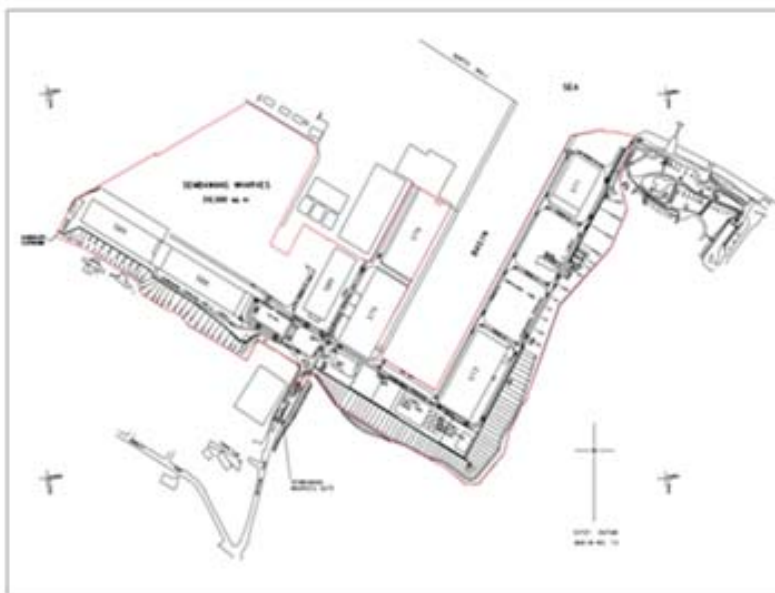
THE SCHEDULE — *continued*

<i>First column</i>	<i>Second column</i>
The Authority	Protected Place
	48,960.848
	27,891.672
	48,968.830
	27,868.403
	49,031.306
	27,761.988
	49,089.903
	27,718.284
	49,093.244
	27,712.477
	49,065.978
	27,696.904
	49,078.106
	27,676.425
	49,094.024
	27,685.852
	49,101.529
	27,688.623
	49,107.770
	27,687.208
	49,125.633
	27,656.414
	49,127.151
	27,654.182
	49,130.745
	27,650.018
	49,132.107
	27,647.687
	49,132.977
	27,645.131
	49,133.531
	27,642.488
	49,144.421
	27,623.487
	49,151.382
	27,611.341
	49,146.732
	27,605.203
	49,114.757
	27,587.394
	49,116.313
	27,585.187
	49,154.850
	27,517.487
	49,180.186
	27,473.456
	49,191.550
	27,463.665
	49,195.567
	27,459.344
	49,200.601
	27,451.763
	49,203.512
	27,443.565

THE SCHEDULE — *continued*

<i>First column</i>	<i>Second column</i>	
The Authority	Protected Place	
	49,207.536	27,431.836
	49,214.886	27,419.105
	49,236.372	27,382.089
	49,258.798	27,374.738
	49,299.275	27,306.430
	49,318.316	27,273.429
	49,332.545	27,235.404

to the point of commencement and are delineated in the Plan set out below.



Senior Terminals Security
Manager, PSA Corporation
Limited

4. BRANI TERMINAL.

All that area occupied by “BRANI TERMINAL” containing an area of approximately 861,550 square metres and bounded by Keppel Channel and Selat Sengkir.

THE SCHEDULE — *continued*

<i>First column</i>	<i>Second column</i>																																												
The Authority	Protected Place																																												
	The boundary commences at the north-westernmost corner of the aforesaid “BRANI TERMINAL” which point’s co-ordinates are North 27,282.754 metres and East 26,954.037 metres of the Singapore Land Authority SVY 21 Datum and runs approximately as follows:																																												
	<table style="margin-left: auto; margin-right: auto; border-collapse: collapse;"> <thead> <tr> <th style="text-align: left;"><i>Northing</i></th> <th style="text-align: left;"><i>Easting</i></th> </tr> </thead> <tbody> <tr><td>27,282.671</td><td>26,974.813</td></tr> <tr><td>27,143.905</td><td>26,971.892</td></tr> <tr><td>27,098.134</td><td>26,973.362</td></tr> <tr><td>27,054.962</td><td>26,979.408</td></tr> <tr><td>27,004.854</td><td>26,992.499</td></tr> <tr><td>26,965.480</td><td>27,007.922</td></tr> <tr><td>27,346.614</td><td>27,676.713</td></tr> <tr><td>27,348.670</td><td>27,684.214</td></tr> <tr><td>27,372.258</td><td>28,306.732</td></tr> <tr><td>27,367.908</td><td>28,318.637</td></tr> <tr><td>26,715.732</td><td>29,018.546</td></tr> <tr><td>26,711.540</td><td>29,018.687</td></tr> <tr><td>26,703.631</td><td>29,011.312</td></tr> <tr><td>26,568.339</td><td>28,738.715</td></tr> <tr><td>26,625.258</td><td>28,716.742</td></tr> <tr><td>26,640.101</td><td>28,711.007</td></tr> <tr><td>26,649.390</td><td>28,700.920</td></tr> <tr><td>26,510.506</td><td>28,410.419</td></tr> <tr><td>26,510.031</td><td>28,409.534</td></tr> <tr><td>26,684.759</td><td>28,222.272</td></tr> <tr><td>26,734.009</td><td>28,268.294</td></tr> </tbody> </table>	<i>Northing</i>	<i>Easting</i>	27,282.671	26,974.813	27,143.905	26,971.892	27,098.134	26,973.362	27,054.962	26,979.408	27,004.854	26,992.499	26,965.480	27,007.922	27,346.614	27,676.713	27,348.670	27,684.214	27,372.258	28,306.732	27,367.908	28,318.637	26,715.732	29,018.546	26,711.540	29,018.687	26,703.631	29,011.312	26,568.339	28,738.715	26,625.258	28,716.742	26,640.101	28,711.007	26,649.390	28,700.920	26,510.506	28,410.419	26,510.031	28,409.534	26,684.759	28,222.272	26,734.009	28,268.294
<i>Northing</i>	<i>Easting</i>																																												
27,282.671	26,974.813																																												
27,143.905	26,971.892																																												
27,098.134	26,973.362																																												
27,054.962	26,979.408																																												
27,004.854	26,992.499																																												
26,965.480	27,007.922																																												
27,346.614	27,676.713																																												
27,348.670	27,684.214																																												
27,372.258	28,306.732																																												
27,367.908	28,318.637																																												
26,715.732	29,018.546																																												
26,711.540	29,018.687																																												
26,703.631	29,011.312																																												
26,568.339	28,738.715																																												
26,625.258	28,716.742																																												
26,640.101	28,711.007																																												
26,649.390	28,700.920																																												
26,510.506	28,410.419																																												
26,510.031	28,409.534																																												
26,684.759	28,222.272																																												
26,734.009	28,268.294																																												

THE SCHEDULE — *continued*

<i>First column</i>	<i>Second column</i>
The Authority	Protected Place
26,843.412	28,150.950
26,858.152	28,152.300
26,879.854	28,152.007
26,906.040	28,092.816
26,918.169	28,079.219
26,980.779	28,032.001
27,001.006	28,014.544
27,003.125	28,012.535
27,005.077	28,010.363
27,006.413	28,007.876
27,007.614	28,005.101
27,009.514	27,999.595
27,010.299	27,996.778
27,012.020	27,987.919
27,012.625	27,984.956
27,015.805	27,979.841
27,017.559	27,977.380
27,019.459	27,975.031
27,021.509	27,972.952
27,023.786	27,971.127
27,028.521	27,967.577
27,030.889	27,966.053
27,035.134	27,963.379
27,047.805	27,955.510
27,060.791	27,947.970
27,071.501	27,942.308
27,087.484	27,933.997

THE SCHEDULE — *continued*

<i>First column</i>	<i>Second column</i>
The Authority	Protected Place
	27,098.340
	27,928.621
	27,114.201
	27,920.078
	27,138.605
	27,903.120
	27,159.632
	27,882.831
	27,192.922
	27,838.645
	27,194.952
	27,727.938
	27,208.999
	27,709.952
	27,195.263
	27,699.415
	27,170.613
	27,681.265
	27,172.023
	27,679.296
	27,168.680
	27,676.734
	27,167.810
	27,673.945
	27,155.978
	27,662.569
	27,161.009
	27,652.201
	27,161.403
	27,649.708
	27,147.469
	27,642.903
	27,135.424
	27,627.167
	27,118.144
	27,632.846
	27,112.386
	27,633.479
	27,109.451
	27,631.953
	27,059.091
	27,639.291
	26,985.829
	27,648.927
	26,947.180
	27,654.087
	26,947.299
	27,656.260
	26,927.086
	27,658.074
	26,916.067
	27,662.260
	26,920.548
	27,673.584

THE SCHEDULE — *continued*

<i>First column</i>		<i>Second column</i>
The Authority		Protected Place
	26,920.189	27,683.253
	26,914.099	27,685.491
	26,913.937	27,687.058
	26,913.491	27,688.569
	26,912.139	27,691.221
	26,910.730	27,693.843
	26,909.217	27,696.407
	26,906.532	27,700.359
	26,903.935	27,703.505
	26,899.559	27,707.726
	26,841.036	27,749.978
	26,786.606	27,744.569
	26,784.233	27,751.868
	26,782.890	27,751.460
	26,783.129	27,750.671
	26,778.261	27,749.137
	26,778.041	27,749.881
	26,764.045	27,745.374
	26,764.829	27,742.870
	26,763.810	27,740.898
	26,761.233	27,740.080
	26,766.284	27,724.136
	26,753.655	27,719.951
	26,751.593	27,720.684
	26,749.897	27,720.069
	26,627.574	27,676.337
	26,666.293	27,575.810

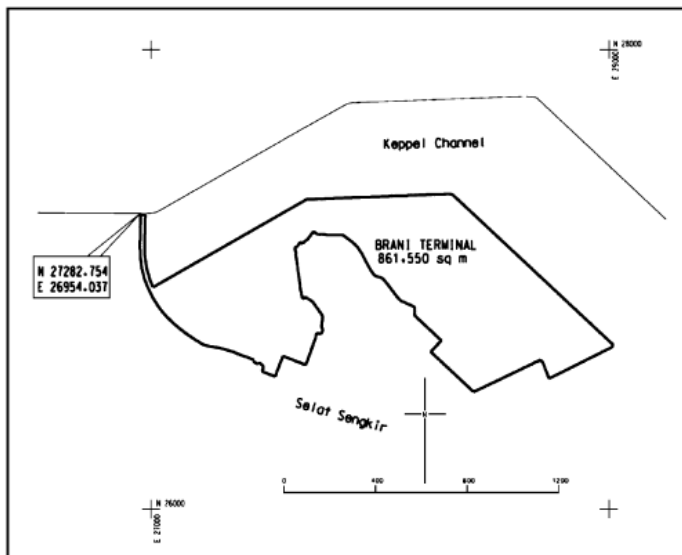
THE SCHEDULE — *continued*

<i>First column</i>	<i>Second column</i>
The Authority	Protected Place
	26,594.677
	26,593.337
	26,576.685
	26,599.144
	26,616.362
	26,624.662
	26,631.078
	26,636.879
	26,636.573
	26,631.044
	26,642.331
	26,647.921
	26,648.975
	26,653.155
	26,660.638
	26,670.114
	26,685.407
	26,691.076
	26,696.656
	26,701.472
	26,704.458
	26,707.946
	26,712.614
	26,714.657
	26,740.345
	26,760.431
	26,782.017
	27,548.619
	27,548.991
	27,542.690
	27,484.123
	27,490.598
	27,488.309
	27,481.968
	27,472.832
	27,470.327
	27,467.291
	27,446.767
	27,449.867
	27,448.635
	27,440.078
	27,421.505
	27,393.015
	27,356.027
	27,336.822
	27,317.590
	27,298.462
	27,278.560
	27,258.842
	27,239.369
	27,229.759
	27,188.240
	27,158.096
	27,129.633

THE SCHEDULE — *continued*

<i>First column</i>	<i>Second column</i>	
The Authority	Protected Place	
	26,808.932	27,097.493
	26,836.945	27,068.912
	26,858.297	27,049.555
	26,883.156	27,030.838
	26,923.059	27,005.782
	26,955.682	26,989.603
	26,998.826	26,971.958
	27,049.137	26,959.172
	27,097.206	26,952.664
	27,144.382	26,951.034
	27,282.754	26,954.037

to the point of commencement and are delineated in the Plan set out below.



Senior Terminals Security 5. PSA Corporation Limited (KEPPEL
 Manager, PSA Corporation DISTRI PARK).
 Limited

THE SCHEDULE — *continued**First column**Second column*

The Authority

Protected Place

All that area occupied by “ PSA Corporation Limited (KEPPEL DISTRI PARK) — PROTECTED PLACE” containing an area of approximately 170, 769 square metres and bounded by Keppel Road, Kampong Bahru Road and Ayer Rajah Expressway.

The boundary commences at the northern-most corner of the aforesaid “ PSA Corporation Limited (KEPPEL DISTRI PARK) — PROTECTED PLACE” which point’s adopted co-ordinates are North 28,573.4 metres and East 27,517.9 metres. The point of commencement is 1,426.6 metres south and 2,482.1 metres west of the Survey Department origin (30,000 metres North, 30,000 metres East) of co-ordinates and runs approximately as under:

<i>Bearing.</i>	<i>Distance in metres.</i>
133° 02'	15.0
133° 36'	255.0
133° 55'	50.0
134° 01'	58.8
180° 34'	5.5
196° 38'	10.9
220° 05'	18.9
218° 40'	22.5
227° 17'	73.6
227° 16'	160.3
227° 28'	78.6
228° 33'	220.0
228° 35'	136.7
316° 11'	49.3

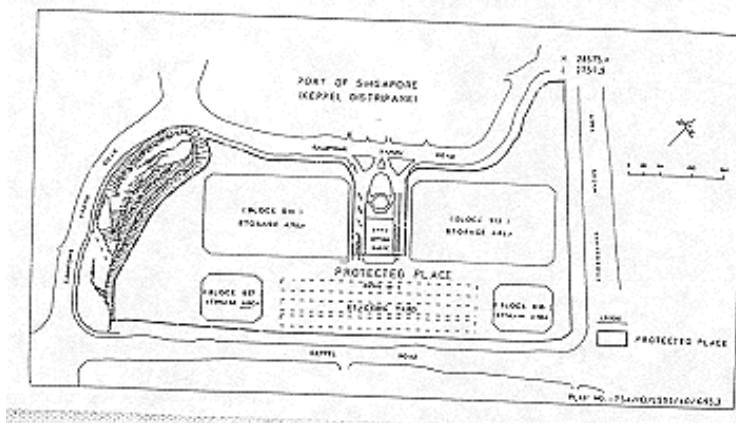
THE SCHEDULE — *continued*

<i>First column</i>	<i>Second column</i>
The Authority	Protected Place
331° 42'	23.3
344° 43'	85.1
356° 16'	63.5
09° 35'	58.5
348° 23'	23.8
299° 04'	20.2
339° 49'	7.3
65° 31'	33.9
62° 39'	27.7
65° 53'	33.1
55° 38'	11.1
48° 36'	11.3
43° 23'	27.8
49° 03'	54.5
49° 31'	17.7
78° 01'	10.9
104° 15'	16.7
123° 37'	13.0
137° 27'	103.4
47° 14'	81.7
317° 19'	108.3
337° 02'	9.6
354° 16'	11.9
22° 00'	9.9
48° 23'	61.0
43° 46'	12.1
37° 45'	11.1

THE SCHEDULE — *continued*

<i>First column</i>	<i>Second column</i>
The Authority	Protected Place
47° 07'	7.8
21° 46'	32.1
357° 57'	31.8
353° 40'	24.3
335° 06'	28.4
343° 23'	35.3
343° 28'	8.2
01° 04'	12.9
25° 23'	13.5
41° 49'	19.9

to the point of commencement and are delineated in the Plan set out hereunder.



Senior Terminals
Security Manager, PSA
Corporation Limited

6. [Deleted by S 295/2017 wef 09/06/2017]

THE SCHEDULE — *continued*

<i>First column</i>	<i>Second column</i>
The Authority	Protected Place
Senior Terminal Security and Safety Manager, PSA Corporation Limited	7. [<i>Deleted by s 620/2009, wef 15/12/2009</i>] <div style="text-align: right;"> <i>[S 585/2018 wef 26/09/2018]</i> <i>[S 295/2017 wef 09/06/2017]</i> <i>[S 486/2014 wef 24/07/2014]</i> <i>[S 61/2012 wef 13/02/2012]</i> <i>[S 506/93 wef 17/12/1993]</i> <i>[S 40/1998 wef 23/01/1998]</i> <i>[S 591/2009 wef 01/12/2009]</i> <i>[S 552/2011 wef 29/09/2011]</i> </div>

<i>First column</i>	<i>Second column</i>
The Authority	Protected Place
(10) S 580/91 [27.12.91] Marketing Director, Shell Companies (Pte.) Ltd.	SHELL INSTALLATION AT PANDAN ROAD.

All those areas comprised in PRIVATE LOT A10269 and PRIVATE LOT A10270 (also known as part of Government survey Lot 4789 Mukim No. 5 Pandan) containing areas of about 10,438.8 square metres and 51,707 square metres, respectively, and bounded approximately as follows:

Private Lot A10269

Commencing at a point which is 31,087.5 metres North and 18,286.8 metres North and 18,286.8 metres East of the Survey Department origin of co-ordinates (N. 30,000m, E. 30,000m) the boundaries run along successive lines of bearings and distances as under:

<i>Bearing</i>	<i>Distance in metres</i>
15° 07' 30"	213.786

THE SCHEDULE — *continued*

<i>First column</i>	<i>Second column</i>
The Authority	Protected Place

285° 08' 30"	48.020
--------------	--------

195° 09' 00"	214.992
--------------	---------

and bounded at the shoreline by rubble wall along successive lines of bearings and distances as under:

<i>Bearing</i>	<i>Distance in metres</i>
----------------	---------------------------

109° 53' 21"	16.587
--------------	--------

119° 24' 03"	14.438
--------------	--------

105° 52' 16"	8.508
--------------	-------

57° 45' 44"	8.552
-------------	-------

106° 06' 34"	3.285
--------------	-------

to the point of commencement.

Private Lot A10270

Commencing at a point which is 31,119.9 metres North and 18,172.7 metres East of the Survey Department origin of co-ordinates (N. 30,000m E. 30,000m) the boundaries run along successive lines of bearings and distances as under:

<i>Bearing</i>	<i>Distance in metres</i>
----------------	---------------------------

15° 09' 00"	101.219
-------------	---------

105° 09' 00"	43.5
--------------	------

15° 09' 00"	113.0
-------------	-------

285° 09' 00"	15.208
--------------	--------

236° 09' 00"	9.29
--------------	------

285° 08' 40"	24.384
--------------	--------

15° 07' 12"	36.545
-------------	--------

18° 41' 18"	111.696
-------------	---------

272° 57' 10"	110.197
--------------	---------

262° 22' 10"	11.87
--------------	-------

THE SCHEDULE — *continued*

<i>First column</i>	<i>Second column</i>
The Authority	Protected Place
	and bounded at the shoreline by rubble wall along successive lines of bearings and distances as under:
	211° 33' 23" 28.230
	204° 59' 52" 29.610
	205° 13' 08" 117.393
	220° 58' 58" 45.554
	188° 08' 36" 44.442
	163° 56' 27" 31.635
	141° 06' 13" 30.691
	134° 55' 48" 16.281
	122° 47' 37" 30.918
	120° 55' 01" 22.416
	113° 05' 48" 17.243
	106° 01' 23" 20.860
	102° 09' 13" 17.634

to the point of commencement.

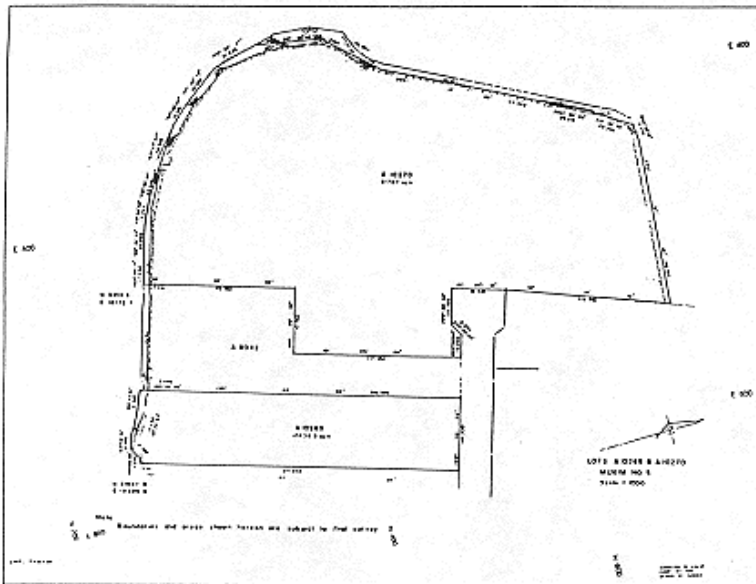
The boundaries of "SHELL INSTALLATION AT PANDAN ROAD" are more particularly delineated in the Plan set out hereunder.

THE SCHEDULE — *continued*

First column
The Authority

Second column
Protected Place

SHELL INSTALLATION AT PANDAN ROAD



First column
The Authority

Second column
Protected Place

- (11) S 31/92 [17.1.92] PUBLIC UTILITIES BOARD GAS TURBINE
President and Chief GENERATING PLANT AT SENOKO POWER
Executive Officer of STATION.
Senoko Energy Pte.
Ltd.

All that area comprised in land Lot 1985, Mukim 13 (Sembawang) at Senoko Road, surrounded by a fencing containing an area of about 23,016.0 square metres and bounded approximately as follows:

Commencing at the south-western corner of the chain link fence which point is 49,699.619 metres North and 24,377.873 metres East of the Survey Department origin of co-ordinates 30,000 metres

THE SCHEDULE — *continued**First column**Second column*

North, 30,000 metres East, the boundaries run along successive lines of fences of bearings and distances as under:

<i>Bearing</i>	<i>Distance in metres</i>
327° 19' 50"	151.766
327° 19' 50"	3.229
58° 17' 24"	52.057
50° 19' 39"	59.920
43° 52' 09"	23.434
56° 42' 18"	11.051
147° 20' 30"	15.263
147° 20' 30"	151.834
237° 21' 27"	56.499
237° 21' 27"	88.808

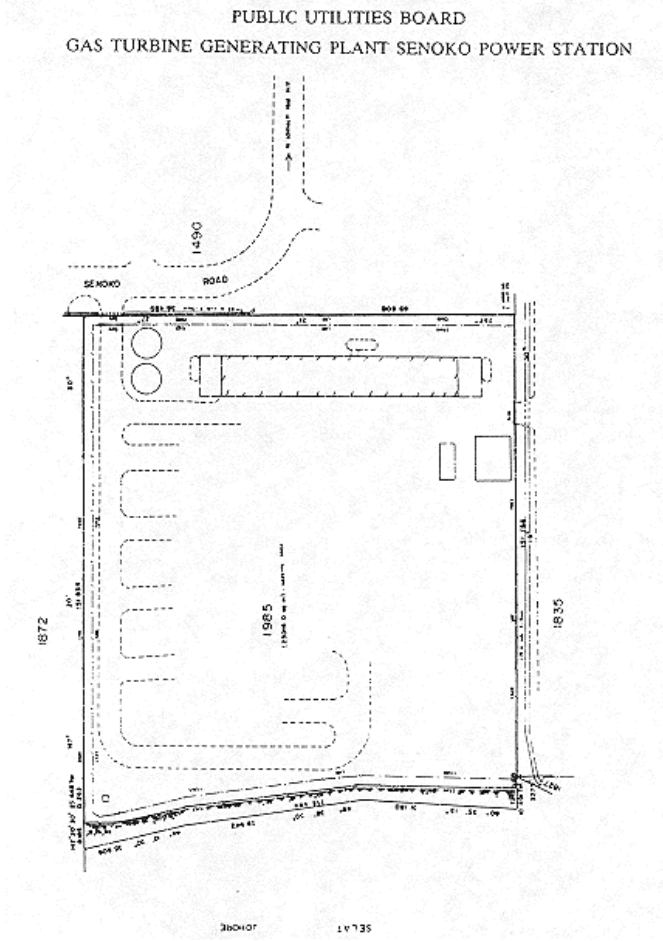
to the point of commencement.

The boundaries of the "PUBLIC UTILITIES BOARD GAS TURBINE GENERATING PLANT at Senoko Power Station" are more particularly delineated in the Plan set out hereunder.

THE SCHEDULE — continued

First column

Second column



THE SCHEDULE — *continued*

First column

Second column



Location Plan
Approx Scale 1:10,000
Geotex Surveyors Pte. Ltd.
1 Goldhill Plaza
#03-29, Podium Block
Singapore 1130
Tel: 2537422 (2 lines)
Fax: 2531700

Job Title Survey and Preparation of Plans and Descriptions for Gazetting of Gas Turbine Plant Site at Senoko Mukim No. 13 Name: Sembawang
Scale = 1:500
Co-ordinates of Origin: N. 30,000 m E. 30,000 m
Notes:
(1) Horizontal datum adopted from Government Cadastral Plan
(2) All grid values, dimensions and levels shown are in metres
(3) Date of survey:— October 1991.
(4) H.W.M. = High Water Mark

[S 490/2014 wef 25/07/2014]

First column

Second column

The Authority

Protected Place

- (12) S 71/92 [28.2.92] MANDAI RANGE
Assistant Chief of
General Staff
(Training).

All that area comprised in State Land being part of Lot 60-15 and part of Lot 60-20, MUKIM NO.

THE SCHEDULE — *continued**First column**Second column*

14 (MANDAI) occupied by “MANDAI RANGE” containing an area of about 84,248 square metres and bounded approximately as follows:

Commencing at the northern-most gate post of the aforesaid “MANDAI RANGE” which point is 42,771.1 metres North and 21,931.7 metres East of the Survey Department origin of co-ordinates (30,000 metres North and 30,000 metres East), the boundaries run along successive lines of bearings and distances as under:

<i>Bearing</i>	<i>Distance in metres</i>
5° 05'	2.2
91° 46'	7.2
19° 33'	2.0
97° 39'	2.7
90° 01'	149.1
84° 12'	16.9
89° 41'	29.8
104° 29'	10.3
130° 05'	6.0
157° 11'	6.2
178° 53'	43.2
180° 44'	83.8
173° 48'	47.2
164° 46'	12.0
182° 31'	8.9
190° 14'	8.9
210° 41'	8.7
222° 11'	3.0
225° 52'	5.9

THE SCHEDULE — *continued*

<i>First column</i>	<i>Second column</i>
240° 46'	9.1
248° 03'	3.0
250° 59'	3.2
260° 25'	8.8
268° 54'	28.1
268° 57'	30.0
176° 12'	34.8
184° 15'	17.8
186° 02'	47.8
178° 07'	14.9
168° 27'	8.9
153° 39'	9.1
157° 11'	2.9
163° 42'	3.0
166° 30'	6.0
184° 52'	24.1
191° 43'	2.9
196° 06'	3.0
200° 14'	3.1
204° 53'	2.9
213° 24'	5.9
222° 57'	6.0
232° 02'	6.1
240° 18'	6.0
248° 18'	6.0
261° 19'	9.1
269° 55'	98.9
273° 33'	9.0

THE SCHEDULE — *continued*

<i>First column</i>	<i>Second column</i>
285° 47'	6.0
291° 19'	6.0
300° 37'	3.1
307° 36'	5.9
322° 39'	9.0
338° 25'	8.9
357° 14'	6.0
19° 13'	20.5
14° 12'	23.8
79° 52'	4.4
0° 49'	206.3
63° 33'	5.1
62° 34'	4.6 (across a drain)
334° 11'	8.9
346° 27'	5.9
355° 02'	3.0
0° 47'	6.0
4° 40'	47.1
20° 11'	32.9
12° 41'	31.5
284° 53'	11.4
294° 05'	6.1
5° 05'	4.1
5° 05'	6.4 (along a gate)

to the point of commencement.

The boundaries of “MANDAI RANGE” are more particularly delineated and edged pink on Survey Plan No. LE/91/59 GAZETTE filed in the

THE SCHEDULE — *continued**First column**Second column*

office of the Director, Lands and Estates
Organisation, Ministry of Defence, Singapore.

*First column**Second column*

The Authority

Protected Place

(13) S 80/92 [6.3.92] TUAS NAVAL BASE

Officer
Commanding, Tuas
Naval Base.

All that area comprised in part of State Land Lots 46-4, 46-5, 46-7, 46-8, 54-1, 54-3, 838, State Land Lot 46-6, part of reclaimed land Lot 987 and part of the sea, Mukim No. 7 (TUAS), containing an area of about 774,092 square metres and bounded approximately as follows:

Commencing at the northern-most corner of the boundary of the aforesaid “TUAS NAVAL BASE” which point is 31,423.2 metres North and 8,496.8 metres East of the Survey Department origin of co-ordinates (30,000 metres North and 30,000 metres East), the boundaries run along successive lines of bearings and distances as under:

<i>Bearing</i>	<i>Distance in metres</i>
133° 23'	15.3
125° 55'	116.7
141° 19'	267.1
155° 29'	39.6
156° 27'	128.5
150° 53'	23.8
139° 44'	24.0
128° 35'	24.0
117° 28'	21.9
110° 44'	29.4

THE SCHEDULE — *continued*

<i>First column</i>	<i>Second column</i>
The Authority	Protected Place
108° 25'	27.3
106° 06'	27.3
103° 46'	27.3
101° 26'	27.2
99° 06'	27.4
92° 27'	23.3
88° 08'	23.2
83° 48'	23.2
79° 30'	23.2
75° 12'	23.2
70° 53'	23.2
66° 34'	23.2
62° 16'	23.2
57° 41'	18.5
52° 42'	18.5
47° 51'	12.4
140° 28'	347.2
230° 28'	5.0
140° 28'	134.0
230° 28'	331.4
230° 28'	19.9
239° 31'	537.1 (across the sea)
190° 07'	177.0 (across the sea)
319° 41'	726.7 (across the sea)
354° 47'	225.4 (across the sea)
50° 26'	301.0 (across the sea)
50° 26'	60.9

THE SCHEDULE — *continued*

<i>First column</i>	<i>Second column</i>
The Authority	Protected Place
50° 26'	228.3
336° 25'	40.2
335° 27'	36.8
321° 18'	261.6
305° 54'	114.6
313° 25'	17.3
43° 23'	21.6

to the point of commencement.

The boundaries of “TUAS NAVAL BASE” are more particularly delineated and edged pink on Survey Print No. LE/91/60 GAZETTE filed in the office of the Director, Lands and Estates Organisation, Ministry of Defence, Singapore.

<i>First column</i>	<i>Second column</i>
The Authority	Protected Place
(14) S 105/92 [20.3.92] Singapore Technologies Logistics Pte. Ltd.	TUAS JETTY

All that area comprised in part of Lot 1502, Mukim No. 7 (TUAS) part of foreshore and part of seabed to the south-west of the mainland occupied by “TUAS JETTY” containing an area of about 1.60 hectares and bounded approximately as follows:

Commencing at the northern-most corner of the perimeter fence of the aforesaid “TUAS JETTY” which point’s co-ordinates are 30,416.2 metres North and 4,204.5 metres East of the Survey Department origin of co-ordinates (30,000 metres North and 30,000 metres East), the boundaries run along successive lines of bearings and distances as under:

THE SCHEDULE — *continued*

<i>First column</i>	<i>Second column</i>
The Authority	Protected Place
<i>Bearing</i>	<i>Distance in metres</i>
149° 23'	52.0 (along chain link fence and gates)
239° 20'	52.1 (along chain link fence)
328° 22'	10.8 (along chain link fence)
229° 24'	48.0 (about one metre offset from slipway)
319° 04'	9.0 (along slipway)
49° 28'	50.1 (about one metre offset from slipway)
239° 23'	854.8 (about one metre offset from jetty)
202° 39'	13.5 (about one metre offset from jetty)
157° 29'	50.6 (about one metre offset from jetty)
247° 31'	18.0 (about one metre offset from jetty)
337° 29'	132.0 (about 2 metres offset from jetty)
67° 39'	18.0 (about one metre offset from jetty)
157° 28'	50.6 (about one metre offset from jetty)
111° 58'	13.2 (about one metre offset from jetty)
59° 23'	852.5 (about one metre offset from jetty)
330° 39'	20.0 (along chain link fence)

THE SCHEDULE — *continued*

<i>First column</i>	<i>Second column</i>
The Authority	Protected Place
59° 24'	52.1 (along chain link fence)

to the point of commencement.

The boundaries of “TUAS JETTY” are more particularly delineated and edged pink on Survey Plan No. LE/92/1/GAZETTE filed in the office of the Director, Lands and Estates Organisation, Ministry of Defence, Singapore.

<i>First column</i>	<i>Second column</i>
The Authority	Protected Place
(15) S 144/92 [27.3.92] Commander, HQ 2 PDF Command.	NEE SOON WAREHOUSE

All that area comprised in part of State Land Lots 15, 17 and part of State Reserve (Old Sembawang Road), Mukim No. 19 (NORTH SELETAR) occupied by “NEE SOON WAREHOUSE” containing an area of about 7,406 square metres and bounded approximately as follows:

Commencing at the southern-most corner of the perimeter fence of the aforesaid “NEE SOON WAREHOUSE” which point is 43,516.7 metres North and 26,683.2 metres East of the Survey Department origin of co-ordinates (30,000 metres North and 30,000 metres East), the boundaries run along successive lines of fence of bearings and distances as under:

<i>Bearing</i>	<i>Distance in metres</i>
276° 49'	25.0
296° 13'	39.9
330° 17'	4.2
26° 05'	36.8

THE SCHEDULE — *continued*

<i>First column</i>	<i>Second column</i>
The Authority	Protected Place
19° 18'	23.8
21° 16'	31.4
44° 14'	18.1
116° 06'	60.4
207° 03'	6.0
196° 16'	38.1
205° 59'	32.0
207° 26'	1.4 (across gate)
206° 11'	12.2 (across gate)
206° 14'	13.9

to the point of commencement.

The boundaries of “NEE SOON WAREHOUSE” are more particularly delineated and edged pink on Survey Plan No. LE/92/3/GAZETTE filed in the office of the Director, Lands and Estates Organisation, Ministry of Defence, Singapore.

<i>First column</i>	<i>Second column</i>
The Authority	Protected Place
(16) S 146/92 [27.3.92] S 212/92 The Director, Electricity Department, Public Utilities Board.	PUBLIC UTILITIES BOARD 230/66/22/6.6 KV SUBSTATION AT KAMPONG JAVA ROAD. All that area comprised in part of Lot 801 TS No. 28 occupied by “PUB 230/66/22/6.6 KV SUBSTATION” containing an area of about 11,005 square metres and bounded approximately as follows:

Commencing at a point on the northern-most corner of the perimeter fence of the aforesaid “PUB SUBSTATION”, which point is 32,866.4 metres North and 29,286.6 metres East of the Survey Department origin of co-ordinates (30,000 metres North, 30,000 metres East), the boundaries

THE SCHEDULE — *continued*

<i>First column</i>	<i>Second column</i>
The Authority	Protected Place
	run along successive lines of fence of bearings and distances as under:
<i>Bearing</i>	<i>Distance in metres</i>
201° 42'	36.9
199° 35'	35.5
197° 45'	35.7
204° 53'	36.2
197° 08'	10.1
296° 43'	44.3
207° 45'	0.5
297° 03'	31.1
297° 11'	6.0 (along a gate)
297° 03'	14.1
351° 21'	35.3
77° 25'	7.9
69° 54'	26.8
55° 01'	36.0
30° 19'	21.3
314° 02'	9.8
350° 13'	0.2
82° 55'	24.7
	to a point where it meets a wall, thence along successive lines which follow a series of walls, gates and fence of bearings and distances as under:
<i>Bearing</i>	<i>Distance in metres</i>
82° 45'	4.7 (along a wall)
83° 06'	9.0 (along a gate)
83° 11'	4.7 (along a wall)

THE SCHEDULE — *continued*

<i>First column</i>	<i>Second column</i>
The Authority	Protected Place
83° 15'	15.4 (along a fence)
82° 05'	4.7 (along a wall)
82° 55'	8.3 (along a gate)
83° 03'	4.7 (along a wall)
84° 16'	3.8 (along a fence)

to the point of commencement.

The boundaries of the “PUB 230/66/22/6.6 KV SUBSTATION” are more particularly delineated and edged pink on Survey Plan No. 30017 filed in the office of the Chief Surveyor, Singapore.

<i>First column</i>	<i>Second column</i>
The Authority	Protected Place
(17) S 351/92 The President and Chief Executive Officer, Toppan Leefung Pte. Ltd.	TOPPAN LEEFUNG PTE. LTD. UBI PLANT, 97 UBI AVENUE 4, SINGAPORE 408754

All that area comprised in part of Lot 3134 Pt, Mukim 23, Paya Lebar, occupied by Toppan Leefung Pte. Ltd. and Toppan Security Printing Pte. Ltd. containing an area of approximately 5,501.7 square metres and bounded approximately as follows:

Commencing at a point on the southern corner of the perimeter fence of the aforesaid Toppan Leefung Pte. Ltd. and Toppan Security Printing Pte. Ltd., which is approximately 35,149.244 metres North and 34,761.004 metres East of the Survey Department origin of co-ordinates, the boundary runs along a fence on a bearing of 66° 44' 44" for a distance of 43.784 metres (partly across the main entrance gate), thence along

THE SCHEDULE — *continued*

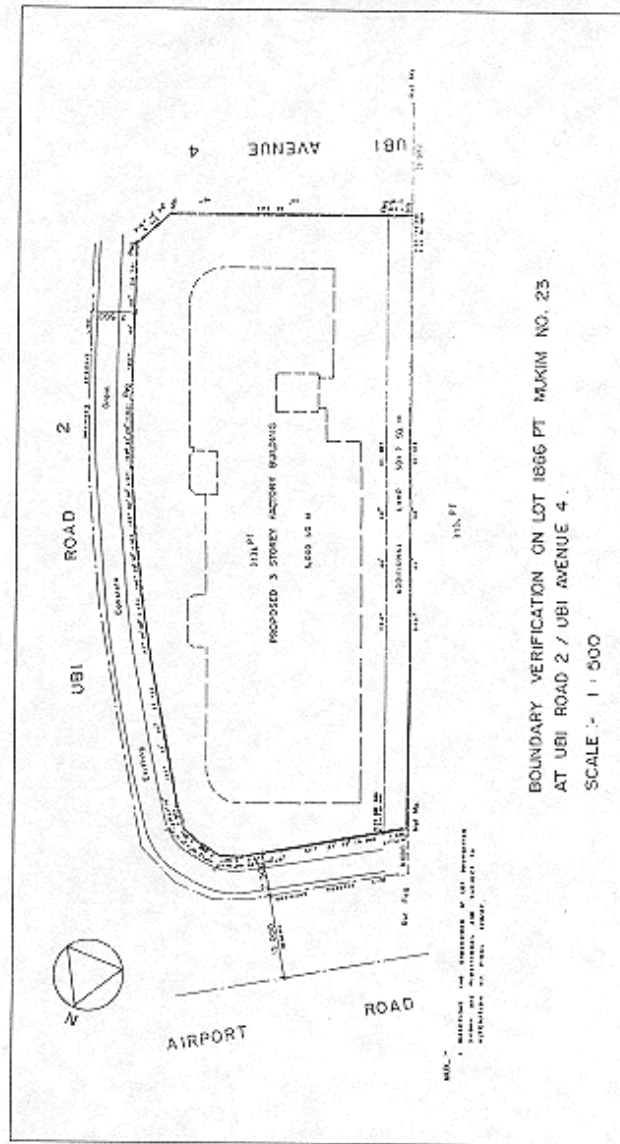
successive lines of fences of bearings and distances as under:

<i>Bearing</i>	<i>Distance in metres</i>
25° 12' 30"	8.712
338° 05' 30"	28.701
336° 34' 20"	11.921
333° 32' 00"	11.921
330° 30' 20"	11.923
327° 28' 00"	11.922
325° 56' 20"	26.724
317° 37' 10"	3.946
292° 34' 50"	3.991
270° 13' 50"	3.988
246° 19' 40"	3.987
236° 43' 20"	6.841
237° 07' 40"	19.366
237° 51' 14"	4.555
156° 44' 40"	111.125

to the point of commencement.

The boundaries of Toppan Leefung Pte. Ltd. and Toppan Security Printing Pte. Ltd. are more particularly delineated in the Plan set out hereunder.

THE SCHEDULE — continued



[S 637/2015 wef 04/11/2015]

THE SCHEDULE — *continued*

<i>First column</i>	<i>Second column</i>
The Authority	Protected Place
(18) S 505/92 [11.12.92] Assistant Chief of General Staff (Training).	PULAU TEKONG M203 RANGE

All that area comprised in parts of State Land Lots 482, 49, 503, 533, 545, 298, part of foreshore, part of seabed, part of Sungei Seminei and part of State Reserve, Mukim No. 33 (PULAU TEKONG) occupied by “PULAU TEKONG M203 RANGE” containing an area of about 168,078 square metres and bounded approximately as follows:

Commencing at a point on the northern-most corner of the boundary of the aforesaid “PULAU TEKONG M203 RANGE” which point is 42,884.0 metres North and 50,435.6 metres East of the Survey Department origin of co-ordinates (30,000 metres North and 30,000 metres East), the boundaries run along successive lines of bearings and distances as under:

<i>Bearing</i>	<i>Distance in metres</i>
109° 15'	170.0 (partly across Sungei Seminei)
176° 53'	17.7 (to meet the northern edge of cattle fence)
176° 53'	39.3 (along cattle fence)
175° 21'	50.4 (along cattle fence)
167° 22'	22.9 (along cattle fence)
162° 29'	27.7 (along cattle fence)
158° 34'	25.1 (along cattle fence)
143° 50'	32.0 (along cattle fence)
183° 58'	12.7 (along cattle fence)
200° 13'	14.9 (along cattle fence)
189° 49'	85.2 (along cattle fence)

THE SCHEDULE — *continued*

<i>First column</i>	<i>Second column</i>
The Authority	Protected Place
189° 49'	277.5 (partly across the sea)
295° 43'	410.0 (across the sea)
26° 02'	520.0 (partly across the sea)

to the point of commencement.

The boundaries of “PULAU TEKONG M203 RANGE” are more particularly delineated and edged pink on Survey Plan No. LE/92/16 GAZETTE filed in the office of the Director, Lands and Estates Organisation, Ministry of Defence, Singapore.

[S 506/93 wef 17/12/1993]

[S 458/96 wef 01/01/1995]

LEGISLATIVE HISTORY
PROTECTED PLACES (CONSOLIDATION) ORDER
(CHAPTER 256, O 4)

This Legislative History is provided for the convenience of users of the Protected Places (Consolidation) Order. It is not part of this Order.

- 1. G. N. No. S 319/1991 — Protected Places (Consolidation) Order 1991**
Date of commencement : Date not available
- 2. G. N. No. S 366/1993 — Protected Places (Consolidation) (Amendment No. 3) Order 1993**
Date of commencement : 10 September 1993
- 3. G. N. No. S 506/1993 — Protected Places (Consolidation) (Amendment No. 4) Order 1993**
Date of commencement : 17 December 1993
- 4. 1993 Revised Edition — Protected Places (Consolidation) Order**
Date of operation : 1 April 1993
- 5. G. N. No. S 458/1996 — Protected Places (Consolidation) (Amendment) Order 1996**
Date of commencement : 1 January 1995
- 6. G. N. No. S 40/1998 — Protected Places (Consolidation) (Amendment) Order 1998**
Date of commencement : 23 January 1998
- 7. G. N. No. S 418/2000 — Protected Places (Consolidation) (Amendment) Order 2000**
Date of commencement : 20 September 2000
- 8. G. N. No. S 75/2005 — Protected Places (Consolidation) (Amendment) Order 2005**
Date of commencement : 15 February 2005
- 9. G. N. No. S 344/2005 — Protected Places (Consolidation) (Amendment No. 2) Order 2005**
Date of commencement : 3 June 2005
- 10. G. N. No. S 298/2006 — Protected Places (Consolidation) (Amendment) Order 2006**
Date of commencement : 8 June 2006

- 11. G. N. No. S 124/2008 — Protected Places (No. 2) Order 2008**
Date of commencement : 14 March 2008
- 12. G. N. No. S 591/2009 — Protected Places (Consolidation) (Amendment) Order 2009**
Date of commencement : 1 December 2009
- 13. G. N. No. S 620/2009 — Protected Places (Consolidation) (Amendment No. 2) Order 2009**
Date of commencement : 15 December 2009
- 14. G. N. No. S 611/2010 — Protected Places (Consolidation) (Amendment) Order 2010**
Date of commencement : 26 October 2010
- 15. G. N. No. S 552/2011 — Protected Places (Consolidation) (Amendment) Order 2011**
Date of commencement : 29 September 2011
- 16. G.N. No. S 61/2012 — Protected Places (Consolidation) (Amendment) Order 2012**
Date of commencement : 13 February 2012
- 17. G.N. No. S 19/2013 — Protected Places (Consolidation) (Amendment) Order 2013**
Date of commencement : 16 January 2013
- 18. G.N. No. S 486/2014 — Protected Places (Consolidation) (Amendment No. 4) Order 2014**
Date of commencement : 24 July 2014
- 19. G.N. No. S 490/2014 — Protected Places (Miscellaneous Amendments) Order 2014**
Date of commencement : 25 July 2014
- 20. G.N. No. S 637/2015 — Protected Places (Miscellaneous Amendments) (No. 2) Order 2015**
Date of commencement : 4 November 2015
- 21. G.N. No. S 230/2016 — Protected Places (No. 3) Order 2016**
Date of commencement : 24 May 2016
- 22. G.N. No. S 295/2017 — Protected Places (No. 3) Order 2017**
Date of commencement : 9 June 2017

23. G.N. No. S 399/2017 — Protected Places (Miscellaneous Amendments) Order 2017

Date of commencement : 19 July 2017

24. G.N. No. S 585/2018 — Protected Places (No. 9) Order 2018

Date of commencement : 26 September 2018

25. G.N. No. S 789/2019 — Infrastructure Protection (Protected Places) (No. 6) Order 2019

Date of commencement : 1 December 2019

26. G.N. No. S 408/2020 — Infrastructure Protection (Protected Places) (No. 11) Order 2020

Date of commencement : 30 May 2020

27. G.N. No. S 944/2020 — Infrastructure Protection (Protected Places) (No. 15) Order 2020

Date of commencement : 6 November 2020