

PROTECTED AREAS AND PROTECTED PLACES ACT
(CHAPTER 256, SECTION 5(1))

PROTECTED PLACES (CONSOLIDATION) ORDER

ARRANGEMENT OF PARAGRAPHS

Paragraph

1. Citation
 2. Protected places, permits and authorised officers
The Schedule
-

Citation

1. This Order may be cited as the Protected Places (Consolidation) Order.

Protected places, permits and authorised officers

2. The premises described in the second column of the Schedule are declared to be protected places for the purposes of the Protected Areas and Protected Places Act, and no person shall be in those premises unless he is in possession of a pass-card or permit issued by the authority specified in the first column of the Schedule or has received the permission of an authorised officer on duty at the premises to enter the premises.

THE SCHEDULE

<i>First column</i>	<i>Second column</i>
The Authority	Protected Place
(1) S 319/91 [26.7.91] The Director, Electricity Department, Public Utilities Board.	(1) Deleted by S 124/2008, wef 14/03/2008. (2) PUBLIC UTILITIES BOARD 230 KV SUBSTATION AT UPPER JURONG ROAD.

THE SCHEDULE — *continued*

First column
The Authority

Second column
Protected Place

All that area comprised wholly on part of Lot 2271 MK No. 16 occupied by “PUB 230 kv Substation” containing an area of about 15,624.4 square metres and bounded approximately as follows:

Commencing at a point on the south-eastern corner of the perimeter fence of the aforesaid “PUB 230 kv Substation” which point is 34,475.152 metres North and 11,468.205 metres East of the Survey Department origin of co-ordinates, the boundaries run along successive lines of fences of bearings and distances as under:

<i>Bearing</i>	<i>Distance in metres</i>
270° 07'	88.6 (along fence)
347° 42'	4.7 (along fence)
331° 34'	8.9
0° 00'	154.6
90° 25'	1.7
157° 08'	5.0
168° 47'	2.6
178° 00'	5.2
88° 48'	1.0 (at pillar of gate)
89° 33'	7.2 (along pillars of gate)
89° 54'	1.2 (along pillars of side gate)
90° 18'	1.0 (along fence)
2° 25'	7.8
16° 35'	2.7
25° 32'	2.8
87° 50'	56.4

THE SCHEDULE — *continued*

<i>First column</i>	<i>Second column</i>
The Authority	Protected Place
150° 13'	3.8
90° 58'	1.3 (at pillar of side gate)
90° 45'	1.1
91° 03'	7.2 (along pillars of main gate)
91° 06'	1.0 (along fence)
19° 00'	4.2
87° 46'	6.6
180° 02'	170.8

to the point of Commencement.

(3) Deleted by S 124/2008, wef 14/03/2008.

(4) PUBLIC UTILITIES BOARD 230 KV
SUBSTATION AT WEST ADMIRALTY
ROAD.

All that area comprised partly in Lot 1680 and partly in Lot 1681Pt MK No. 13 occupied by "PUB 230/66 KV Substation" containing an area of 6,968.2 square metres and bounded approximately as follows:

Commencing at a point on the south-western corner of the perimeter fence of the aforesaid "PUB Substation" which point is 49,254.244 metres North and 25,466.347 metres East of the Survey Department of origin of co-ordinates, the boundaries run along successive lines of fences of bearings and distances as under:

<i>Bearing</i>	<i>Distance in metres</i>
333° 54'	10.1 (along fence fronting Sembawang)
52° 32'	0.4
334° 00'	32.1

THE SCHEDULE — *continued*

<i>First column</i>	<i>Second column</i>
The Authority	Protected Place
333° 31'	12.6
330° 01'	16.1
48° 34'	0.5
329° 41'	18.5
329° 33'	3.3
37° 14'	17.7
64° 13'	26.8 (along fence fronting Admiralty Road West)
154° 22'	7.4
62° 56'	0.9
63° 57'	10.2 (along a gate)
66° 57'	0.6 (along a fence)
335° 08'	7.4
64° 04'	18.1
154° 22'	41.8
154° 27'	25.0
154° 17'	22.5
63° 35'	0.5
155° 14'	12.0
244° 27'	44.4
244° 38'	25.6

to the point of commencement.

The boundaries of the Public Utilities Board 230 KV Substations at Pasir Panjang Road, Upper Jurong Road, Ubi Avenue 3 and West Admiralty Road are delineated in the Plans set out hereunder.

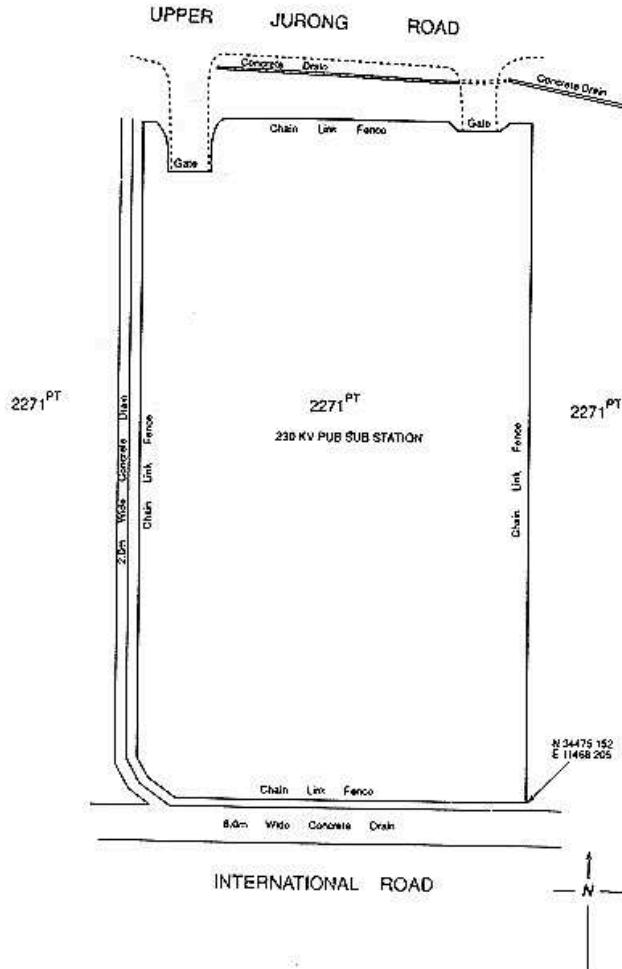
(1) *Form 1 — Deleted by S 124/2008, wef 14/03/2008.*

(2) Public Utilities Board 230 KV Substation at Upper Jurong Road

THE SCHEDULE — continued

First column
The Authority

Second column
Protected Place

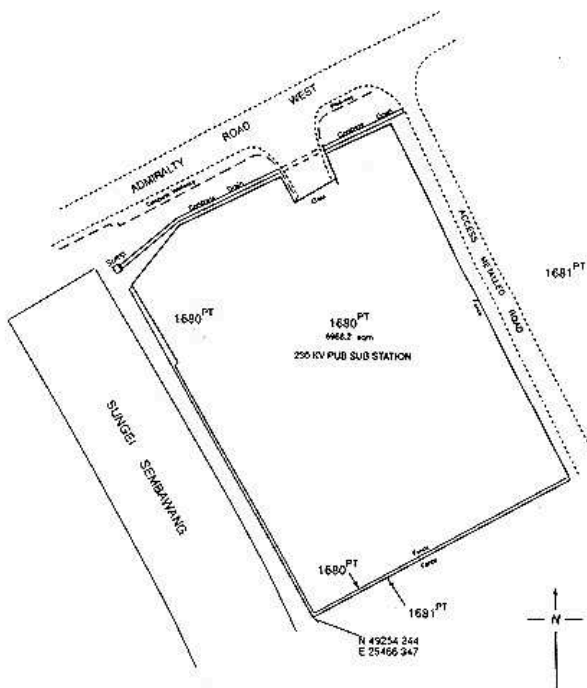


(3) Form 3 — Deleted by S 124/2008, wef 14/03/2008.

(4) Public Utilities Board 230 KV Substation at West Admiralty Road

THE SCHEDULE — *continued*

<i>First column</i>	<i>Second column</i>
The Authority	Protected Place



<i>First column</i>	<i>Second column</i>
The Authority	Protected Place

- (2) S 330/91 [2.8.91] SINGAPORE SHIPBUILDING & General Manager, ENGINEERING LIMITED PREMISES, NO. Singapore Shipbuilding 16 BENOI ROAD SINGAPORE 2262. & Engineering Limited.

All that area comprised wholly in Lot 203 MK No. 7 (TUAS) occupied by the “SINGAPORE SHIPBUILDING & ENGINEERING LIMITED” containing an area of about 20,224.2 square metres and bounded approximately as follows:

THE SCHEDULE — *continued*

First column
The Authority

Second column
Protected Place

Commencing at the southern-most corner of the perimeter fence of the aforesaid “SINGAPORE SHIPBUILDING & ENGINEERING LIMITED” which point is 31,480.060 metres North and 10,772.082 metres East of the Survey Department origin of co-ordinates, the boundaries run along successive lines of fences of bearings and distances as under:

<i>Bearing</i>	<i>Distance in metres</i>
315° 17'	76.6 (along bottom of slope)
315° 15'	87.4 (along bottom of slope)
82° 52'	36.2
49° 12'	0.1
82° 54'	60.8
82° 46'	51.9
82° 44'	53.5
172° 35'	5.3
262° 56'	4.8 (along concrete access)
187° 24'	0.2
173° 03'	2.6 (at bin centre)
157° 52'	0.3
83° 31'	4.4
172° 22'	4.9 (along a wall)
173° 00'	8.0 (across an access road)
172° 53'	4.9 (along a wall)
84° 32'	0.3

THE SCHEDULE — *continued*

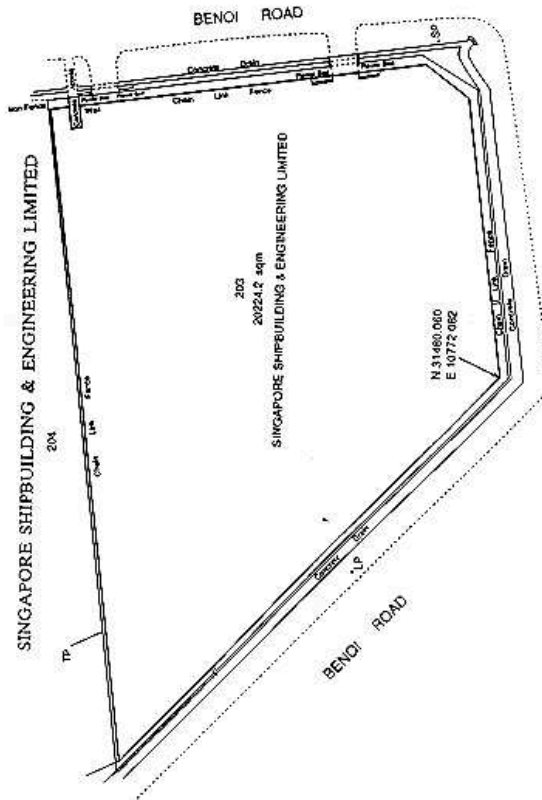
<i>First column</i>	<i>Second column</i>
The Authority	Protected Place
172° 48'	55.1
265° 47'	0.3
172° 33'	6.1 (partly along a wall)
172° 33'	7.7 (across an access)
172° 46'	6.2 (partly along a wall)
88° 38'	0.3
172° 52'	13.8 (along bottom of slope)
177° 12'	3.6 (along bottom of slope)
219° 29'	16.2 (along bottom of slope)
258° 39'	3.6
262° 52'	45.4
262° 41'	41.5

to the point of commencement.

The boundaries of “SINGAPORE SHIP-BUILDING & ENGINEERING LIMITED” are delineated in the Plan set out hereunder.

THE SCHEDULE — *continued*

<i>First column</i>	<i>Second column</i>
The Authority	Protected Place



<i>First column</i>	<i>Second column</i>
The Authority	Protected Place

- | | |
|--|--|
| <p>(3) S 345/91 (1) [8.8.91]
The Director,
Electricity
Department.</p> | <p>(1) PUBLIC UTILITIES BOARD 230/66/22KV
SUBSTATION AT KALLANG BASIN.</p> |
|--|--|

All that area comprised wholly in Lots 6541,5241 and 6535 MK No. 24 occupied by “PUB 230/66/22KV substation” containing an area of 17,417.2 square metres and bounded approximately as follows:

THE SCHEDULE — *continued*

First column
The Authority

Second column
Protected Place

Commencing at the southern-west point of the perimeter fence of the aforesaid “PUB substation” which point is 33,514.518 metres North and 32,160.033 metres East of the Survey Department of origin of co-ordinates, the boundaries run along successive lines of fences of bearings and distances as under:

<i>Bearing</i>	<i>Distance in metres</i>
275° 14'	37.6 (along fence beside a concrete drain)
327° 10'	8.5
310° 30'	4.9
327° 14'	26.1
328° 50'	38.0
14° 51'	7.3 (along fence)
57° 49'	28.9 (along fence fronting Kallang Bahru)
54° 32'	0.2
58° 11'	20.3
58° 19'	1.2 (along a side gate)
58° 12'	9.5 (to another side gate)
59° 55'	1.2 (along a side gate)
57° 38'	18.2 (along fence)
59° 32'	2.8
82° 25'	2.8
32° 16'	0.1
58° 08'	3.4 (along a gate)
97° 30'	0.1
57° 16'	14.2 (along a fence)

THE SCHEDULE — *continued*

<i>First column</i>	<i>Second column</i>
The Authority	Protected Place
7° 06'	0.1
55° 01'	2.1
58° 05'	5.3 (along a gate)
58° 24'	46.8
110° 12'	11.4
148° 15'	30.7 (along fence fronting Geylang Bahru)
148° 30'	36.0
149° 46'	5.6
151° 23'	6.1
152° 54'	18.0 (across a concrete drain)
238° 02'	58.7
238° 15'	19.4
237° 04'	2.5
238° 26'	44.0
239° 28'	7.8
238° 51'	0.2
255° 59'	2.9 (across a concrete drain)

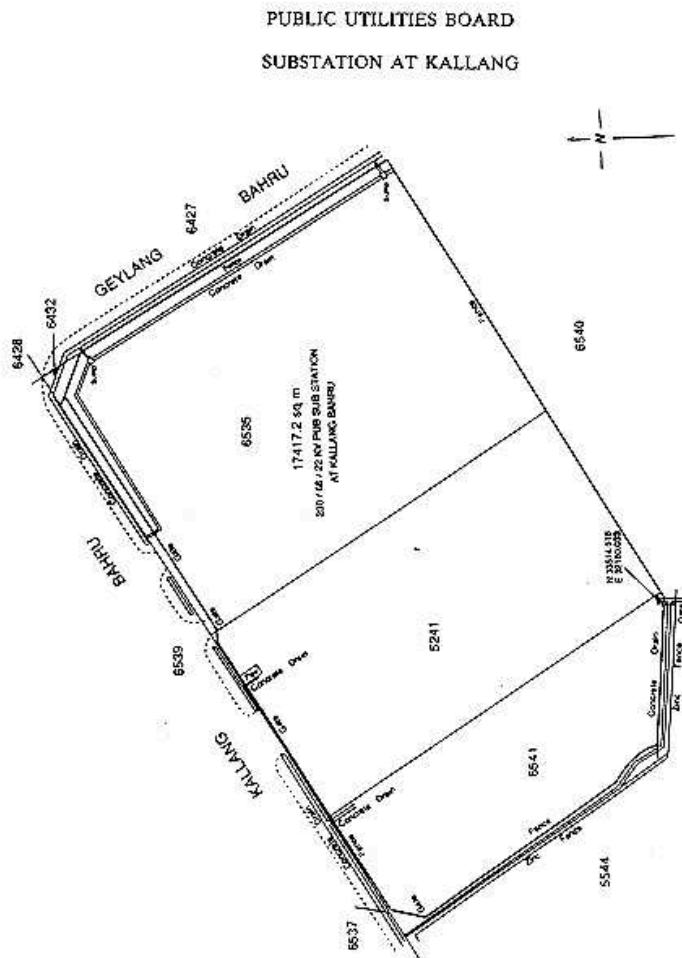
to the point of commencement.

The boundaries of the “PUB 230/66/22KV substation” are more particularly delineated in the Plan set out hereunder.

THE SCHEDULE — *continued*

First column
The Authority

Second column
Protected Place



The Director, Electricity
Department.

(2) PUBLIC UTILITIES BOARD 230/66/22KV
SUBSTATION AT AYER RAJAH
CRESCENT.

All that area comprised wholly in Lot 1711 MK
No. 3 occupied by “PUB 230/66/22KV substation”
containing an area of 13,518.6 square metres and
bounded approximately as follows:

THE SCHEDULE — *continued*

First column
The Authority

Second column
Protected Place

Commencing at the south-easterly corner of the perimeter fence of the aforesaid “PUB substation” which point is 30,997.930 metres North and 23,042.284 metres East of the Survey Department of origin of co-ordinates, the boundaries run along successive lines of fences of bearings and distances as under:

<i>Bearing</i>	<i>Distance in metres</i>
292° 17'	2.7 (along fence)
293° 40'	0.8 (concrete gate pillar)
20° 31'	0.6
292° 47'	5.9 (along gate)
204° 24'	0.6 (concrete gate pillar)
293° 32'	0.8
305° 21'	5.8 (along fence)
303° 26'	32.5
292° 53'	64.8
342° 04'	2.9
339° 53'	9.8
22° 25'	15.5
22° 55'	1.3 (along small gate)
22° 36'	9.2 (along big gate)
22° 25'	1.2 (along small gate)
23° 28'	0.2 (across concrete gate pillar)
292° 52'	0.1 (along brick wall)
22° 52'	23.0 (along outer face of brick wall fronting Ayer Rajah Crescent)
112° 38'	4.3

THE SCHEDULE — *continued*

<i>First column</i> The Authority	<i>Second column</i> Protected Place
21° 23'	0.9
22° 28'	7.3 (along big gate)
22° 12'	0.8 (across concrete gate pillar)
22° 32'	1.0 (along small gate)
292° 41'	4.4 (along outer face of brick wall)
23° 01'	0.4
74° 10'	0.1 (along fence)
22° 55'	31.5
68° 33'	13.0

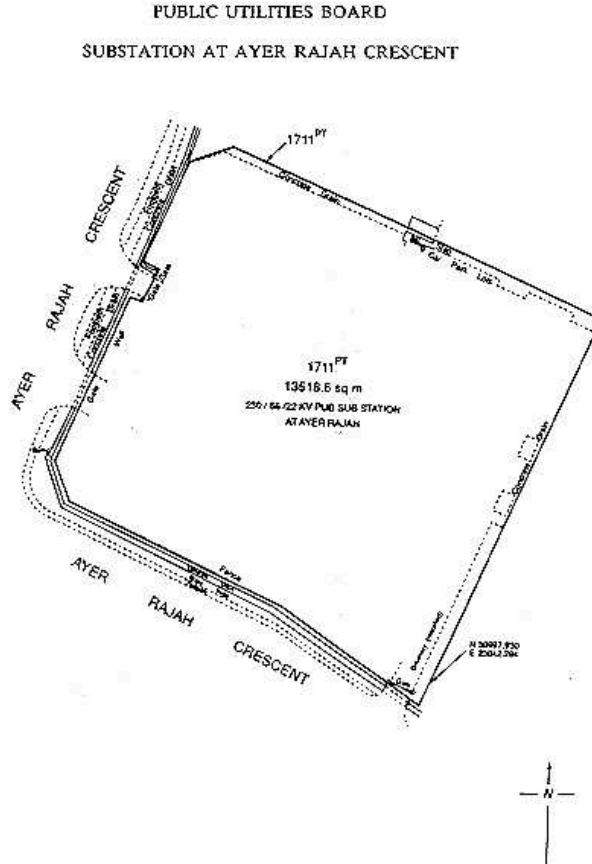
to the point of commencement.

The boundaries of the “PUB 230/66/22KV substation” are more particularly delineated in the Plan set out hereunder.

THE SCHEDULE — continued

First column
The Authority

Second column
Protected Place



The Director, Electricity Department. (3) PUBLIC UTILITIES BOARD 230/66/22KV SUBSTATION AT TAMPINES ROAD.

All that area comprised wholly in Lot 999 MK No. 29 occupied by “PUB 230/66/22KV substation” containing an area of 14,828.7 square metres and bounded approximately as follows:

Commencing at the south-easterly corner of the perimeter fence of the aforesaid “PUB substation” which point is 39,107.490 metres North and 39,971.614 metres East of the Survey Department of origin of co-ordinates, the boundaries run along

THE SCHEDULE — *continued*

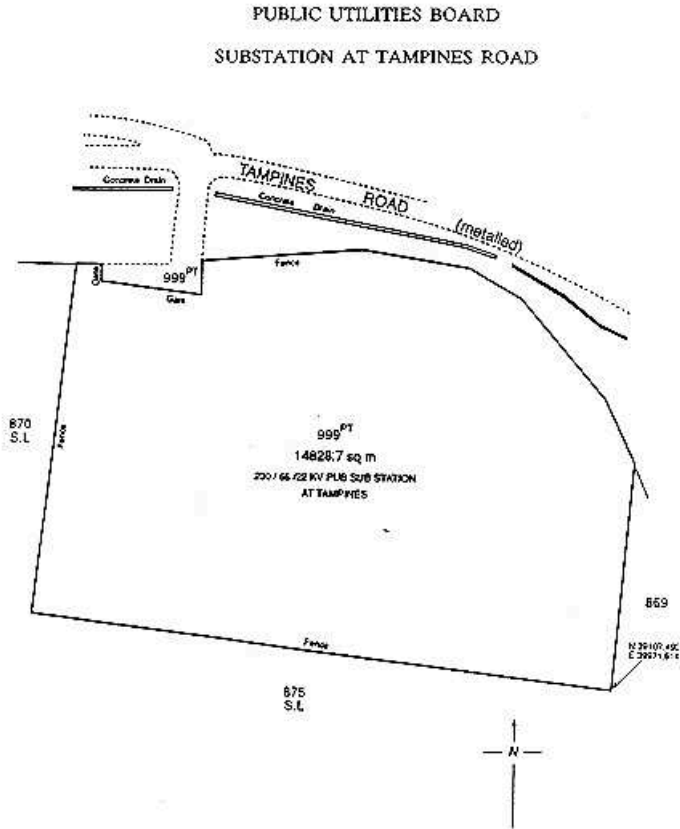
<i>First column</i>	<i>Second column</i>																																																
The Authority	Protected Place																																																
	successive lines of fences of bearings and distances as under:																																																
	<table border="0" style="width: 100%;"> <thead> <tr> <th style="text-align: left;"><i>Bearing</i></th> <th style="text-align: left;"><i>Distance in metres</i></th> </tr> </thead> <tbody> <tr><td>278° 01'</td><td>32.3 (along fence)</td></tr> <tr><td>278° 11'</td><td>26.9</td></tr> <tr><td>278° 06'</td><td>33.0</td></tr> <tr><td>278° 11'</td><td>26.8</td></tr> <tr><td>278° 10'</td><td>36.1</td></tr> <tr><td>8° 06'</td><td>32.8</td></tr> <tr><td>8° 07'</td><td>24.0</td></tr> <tr><td>8° 12'</td><td>36.2</td></tr> <tr><td>87° 48'</td><td>7.1 (along fence fronting Tampines Road)</td></tr> <tr><td>185° 09'</td><td>1.0</td></tr> <tr><td>186° 17'</td><td>3.8 (along a gate)</td></tr> <tr><td>97° 33'</td><td>13.0 (along fence)</td></tr> <tr><td>98° 20'</td><td>1.2</td></tr> <tr><td>98° 34'</td><td>3.8</td></tr> <tr><td>98° 03'</td><td>7.8 (along a gate)</td></tr> <tr><td>95° 44'</td><td>1.1</td></tr> <tr><td>7° 18'</td><td>9.7</td></tr> <tr><td>87° 35'</td><td>11.6</td></tr> <tr><td>89° 25'</td><td>30.5</td></tr> <tr><td>101° 19'</td><td>29.1</td></tr> <tr><td>111° 57'</td><td>6.3</td></tr> <tr><td>125° 17'</td><td>9.3</td></tr> <tr><td>140° 18'</td><td>33.0</td></tr> </tbody> </table>	<i>Bearing</i>	<i>Distance in metres</i>	278° 01'	32.3 (along fence)	278° 11'	26.9	278° 06'	33.0	278° 11'	26.8	278° 10'	36.1	8° 06'	32.8	8° 07'	24.0	8° 12'	36.2	87° 48'	7.1 (along fence fronting Tampines Road)	185° 09'	1.0	186° 17'	3.8 (along a gate)	97° 33'	13.0 (along fence)	98° 20'	1.2	98° 34'	3.8	98° 03'	7.8 (along a gate)	95° 44'	1.1	7° 18'	9.7	87° 35'	11.6	89° 25'	30.5	101° 19'	29.1	111° 57'	6.3	125° 17'	9.3	140° 18'	33.0
<i>Bearing</i>	<i>Distance in metres</i>																																																
278° 01'	32.3 (along fence)																																																
278° 11'	26.9																																																
278° 06'	33.0																																																
278° 11'	26.8																																																
278° 10'	36.1																																																
8° 06'	32.8																																																
8° 07'	24.0																																																
8° 12'	36.2																																																
87° 48'	7.1 (along fence fronting Tampines Road)																																																
185° 09'	1.0																																																
186° 17'	3.8 (along a gate)																																																
97° 33'	13.0 (along fence)																																																
98° 20'	1.2																																																
98° 34'	3.8																																																
98° 03'	7.8 (along a gate)																																																
95° 44'	1.1																																																
7° 18'	9.7																																																
87° 35'	11.6																																																
89° 25'	30.5																																																
101° 19'	29.1																																																
111° 57'	6.3																																																
125° 17'	9.3																																																
140° 18'	33.0																																																

THE SCHEDULE — *continued*

<i>First column</i> The Authority	<i>Second column</i> Protected Place
157° 26'	6.1
146° 00'	12.8
188° 05'	32.1
188° 09'	29.8

to the point of commencement.

The boundaries of the “PUB 230/66/22KV substation” are more particularly delineated in the Plan set out hereunder:



THE SCHEDULE — *continued*

<i>First column</i>	<i>Second column</i>
The Authority	Protected Place
The Director, Electricity Department.	(4) PUBLIC UTILITIES BOARD 230/66/22KV SUBSTATION AT CHOA CHU KANG ROAD.

All that area comprised wholly in Lot 1529 MK No. 10 occupied by “PUB 230/66/22KV substation” containing an area of 8,313.9 square metres and bounded approximately as follows:

Commencing at the south-westerly corner of the perimeter fence of the aforesaid “PUB substation” which point is 39,750.911 metres North and 19,303.460 metres East of the Survey Department of origin of co-ordinates, the boundaries run along successive lines of fences of bearings and distances as under:

<i>Bearing</i>	<i>Distance in metres</i>
1° 42'	33.9 (along fence)
1° 44'	34.7
1° 57'	33.2
80° 01'	10.3 (along fence fronting Choa Chu Kang Road)
73° 22'	13.0
68° 05'	15.8
183° 44'	5.3
91° 01'	0.6
91° 30'	11.5 (along a gate)
92° 12'	2.0 (along a fence)
1° 43'	8.8
66° 42'	15.9
67° 12'	11.3
181° 25'	23.0
181° 57'	32.8

THE SCHEDULE — *continued*

<i>First column</i>	<i>Second column</i>
The Authority	Protected Place
181° 58'	27.7
182° 33'	42.1
271° 12'	33.8
271° 28'	23.0
252° 43'	9.7
271° 25'	9.0

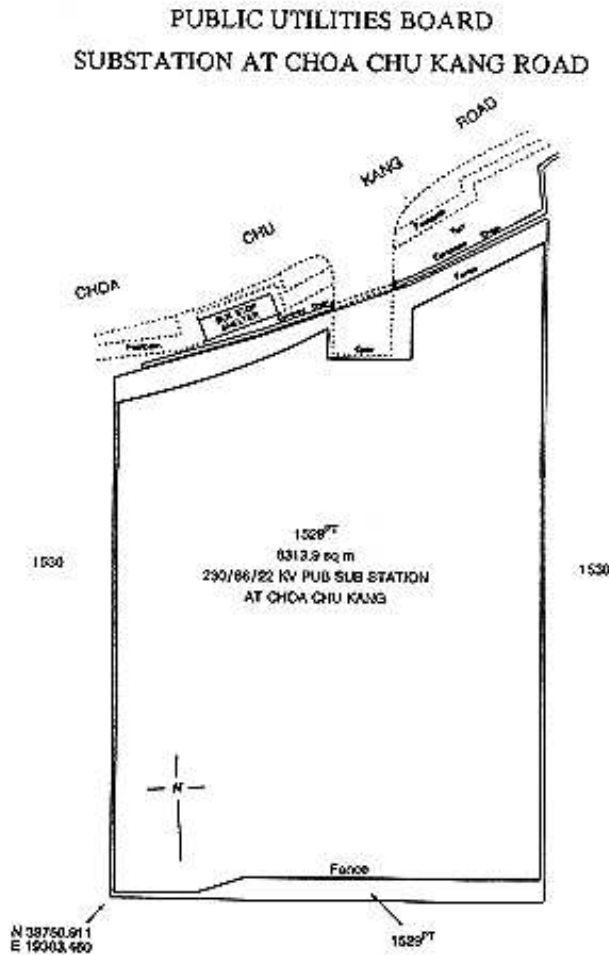
to the point of commencement.

The boundaries of the “PUB 230/66/22KV substation” are more particularly delineated in the Plan set out hereunder:

THE SCHEDULE — continued

First column
The Authority

Second column
Protected Place



(4) [Deleted by S 789/2019 wef 01/12/2019]

(5) [Deleted by S 408/2020 wef 30/05/2020]

(6) [Deleted by S 944/2020 wef 06/11/2020]

THE SCHEDULE — *continued*

<i>First column</i>	<i>Second column</i>
The Authority	Protected Place
(7) S 422/91 [27.9.91] Chief Executive Officer (VP/GM), Singapore Electronic & Engineering Limited	SINGAPORE ELECTRONIC & ENGINEERING (PRIVATE) LIMITED PREMISES.

All that area comprised in part of Lot 8882 No. 18 (ANG MO KIO), occupied by “SINGAPORE ELECTRONIC & ENGINEERING (PRIVATE) LIMITED PREMISES” containing an area of about 14,760 square metres and bounded approximately as follows:

Commencing at a point on the northern-most corner of the perimeter fence of the aforesaid “SINGAPORE ELECTRONIC & ENGINEERING (PRIVATE) LIMITED PREMISES” which point is 41,566.9 metres North and 29,828.7 metres East of the Survey Department origin of co-ordinates (N 30,000m, E. 30,000 m), the boundaries run along successive lines of fence of bearings and distances as under:

<i>Bearing</i>	<i>Distance in metres</i>
94° 47'	6.0
100° 08'	6.0
111° 08'	6.2
120° 01'	6.0
126° 29'	5.7
135° 50'	5.8
142° 49'	6.0
150° 14'	5.9
162° 53'	6.0
169° 54'	6.2

THE SCHEDULE — *continued*

<i>First column</i>	<i>Second column</i>
The Authority	Protected Place
179° 00'	6.2
184° 50'	63.6
267° 19'	32.6
267° 33'	107.6 (along two successive gates)
353° 41'	2.0
356° 03'	6.6 (along a gate)
359° 28'	0.9
	to meet a building wall, thence along successive lines following the building wall of bearings and distances as under:
<i>Bearing</i>	<i>Distance in metres</i>
269° 06'	0.1
359° 06'	0.1
272° 19'	0.1
352° 11'	0.3
82° 11'	0.1
357° 11'	2.5 (successively along a wall, a gate and a wall)
269° 59'	0.1
356° 14'	0.1
	to meet a fence, thence along successive lines of fence of bearings and distances as under:
<i>Bearing</i>	<i>Distance in metres</i>
267° 47'	1.7
353° 59'	18.8
351° 32'	21.1

THE SCHEDULE — *continued*

<i>First column</i>	<i>Second column</i>
The Authority	Protected Place
	to meet a wall, thence along successive lines following the wall of bearings and distances as under:
	<i>Bearing</i> <i>Distance in metres</i>
	258° 14' 0.2
	348° 14' 6.5
	to meet a gate, thence along a line following the gate on an approximate bearing of 347° 56' and for a distance of approximately 10.7 metres to meet a wall, thence along successive lines following the wall of bearings and distances as under:
	<i>Bearing</i> <i>Distance in metres</i>
	347° 03' 12.8
	31° 31' 10.3
	83° 51' 2.5
	173° 51' 0.1
	to meet a fence, thence along successive lines of fence of bearings and distances as under:
	<i>Bearing</i> <i>Distance in metres</i>
	83° 36' 33.3
	166° 25' 0.6
	78° 31' 15.3
	351° 01' 0.7
	72° 56' 36.5
	80° 58' 13.0
	82° 46' 15.4
	to the point of commencement.
	The boundaries of “SINGAPORE ELECTRONIC & ENGINEERING (PRIVATE)

THE SCHEDULE — *continued*

*First column**Second column*

The Authority

Protected Place

LIMITED PREMISES” are more particularly delineated and edged pink on survey Plan No. 20009 filed in the office of the Chief Surveyor, Singapore.

*First column**Second column*(8) [*Deleted by S 399/2017 wef 19/07/2017*]*First column**Second column*

The Authority

Protected Place

(9) S 525/91 [29.11.91]

Senior Terminals Security
Manager, PSA Corporation
Limited1. [*Deleted by S 585/2018 wef 26/09/2018*]Director (Corporate
Development), PSA
Corporation Limited2. [*Deleted by S 620/2009 wef 15/12/2009*]Senior Terminals Security
Manager, PSA Corporation
Limited

3. SEMBAWANG WHARVES.

All that area occupied by “SEMBAWANG WHARVES” containing an area of approximately 312,500 square metres and bounded by Fiji Road, Jamaica Road, Sembawang Shipyard, H M Dockyard, Stores Road, Stores Basin, Sembawang Park and Deptford Road.

The boundary commences at the westernmost corner of the aforesaid “SEMBAWANG WHARVES” which point bears the co-ordinates North 49,342.274 metres and East 27,216.569 metres of the Singapore Land Authority SVY 21 Datum and runs approximately as follows:

THE SCHEDULE — *continued*

<i>First column</i>	<i>Second column</i>	
The Authority	Protected Place	
	<i>Northing</i>	<i>Easting</i>
	49,342.274	27,216.569
	49,383.623	27,239.331
	49,386.861	27,240.369
	49,406.042	27,251.743
	49,408.954	27,256.526
	49,439.994	27,314.658
	49,470.282	27,370.933
	49,478.734	27,386.622
	49,485.217	27,398.838
	49,490.240	27,408.064
	49,489.903	27,407.978
	49,486.849	27,412.203
	49,495.094	27,426.829
	49,506.771	27,447.666
	49,522.803	27,476.531
	49,558.642	27,542.619
	49,584.126	27,589.381
	49,563.317	27,625.639
	49,545.591	27,656.885
	49,524.579	27,693.334
	49,512.606	27,714.162
	49,506.148	27,720.383
	49,498.448	27,723.726
	49,490.251	27,723.287
	49,367.320	27,654.402
	49,327.834	27,633.993

THE SCHEDULE — *continued*

<i>First column</i>	<i>Second column</i>
The Authority	Protected Place
49,324.491	27,634.413
49,324.480	27,634.615
49,321.503	27,639.675
49,319.456	27,642.940
49,318.621	27,644.951
49,306.532	27,666.063
49,309.041	27,667.707
49,362.714	27,698.153
49,352.393	27,716.567
49,345.243	27,729.151
49,337.805	27,742.036
49,336.487	27,741.436
49,335.211	27,742.644
49,332.835	27,746.785
49,335.447	27,748.622
49,328.286	27,761.364
49,323.858	27,769.138
49,299.424	27,811.861
49,298.193	27,814.483
49,298.921	27,816.904
49,294.152	27,826.134
49,418.344	27,896.971
49,436.914	27,907.607
49,432.845	27,915.070
49,428.228	27,923.827
49,409.221	27,957.193
49,402.618	27,953.432

THE SCHEDULE — *continued*

<i>First column</i>	<i>Second column</i>
The Authority	Protected Place
	49,397.173
	27,962.990
	49,403.777
	27,966.751
	49,394.125
	27,983.695
	49,331.379
	27,947.978
	49,310.869
	27,936.303
	49,270.023
	27,913.052
	49,144.539
	27,840.798
	49,135.868
	27,855.999
	49,120.928
	27,847.477
	49,060.531
	27,953.363
	49,204.882
	28,035.533
	49,490.843
	28,198.423
	49,523.064
	28,216.814
	49,523.813
	28,217.620
	49,524.347
	28,218.694
	49,534.917
	28,277.248
	49,532.348
	28,277.649
	49,531.656
	28,282.298
	49,531.189
	28,292.387
	49,530.623
	28,302.471
	49,528,379
	28,312.319
	49,526.356
	28,322.520
	49,524.826
	28,332.200
	49,524.009
	28,341.565
	49,512.554
	28,332.037
	49,505.888
	28,331.358
	49,502.035
	28,329.033

THE SCHEDULE — *continued*

<i>First column</i>		<i>Second column</i>
The Authority		Protected Place
	49,494.968	28,331.228
	49,464.222	28,319.241
	49,459.292	28,316.802
	49,456.660	28,316.198
	49,443.757	28,311.595
	49,411.690	28,318.489
	49,391.358	28,325.782
	49,320.824	28,294.648
	49,287.256	28,262.325
	49,216.070	28,194.101
	49,206.827	28,190.555
	49,190.406	28,184.503
	49,170.057	28,176.685
	49,119.571	28,157.523
	49,039.203	28,127.767
	49,038.474	28,125.064
	49,034.967	28,121.225
	49,019.994	28,114.291
	48,997.663	28,103.972
	48,986.153	28,096.359
	48,946.197	28,086.729
	48,891.087	28,037.195
	48,890.310	28,015.309
	48,890.263	28,012.609
	48,918.562	27,977.621
	48,958.734	27,896.637
	48,959.885	27,894.195

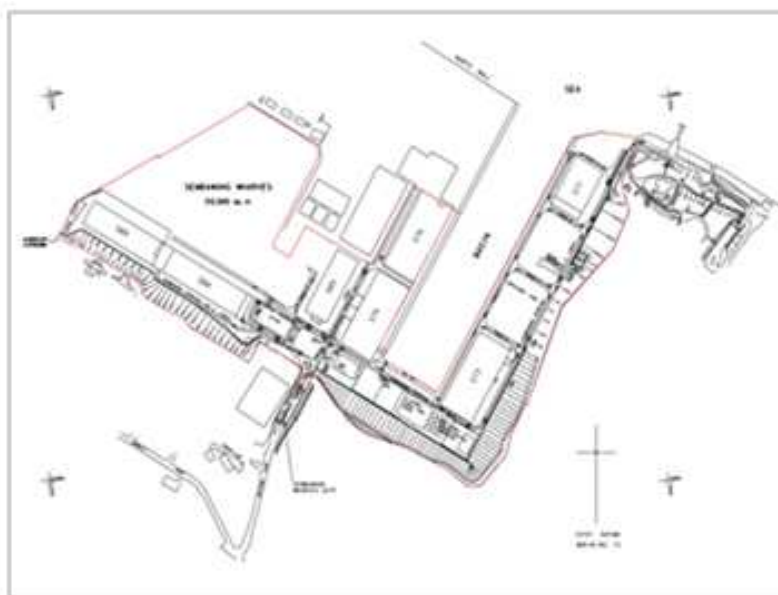
THE SCHEDULE — *continued*

<i>First column</i>	<i>Second column</i>
The Authority	Protected Place
	48,960.848
	27,891.672
	48,968.830
	27,868.403
	49,031.306
	27,761.988
	49,089.903
	27,718.284
	49,093.244
	27,712.477
	49,065.978
	27,696.904
	49,078.106
	27,676.425
	49,094.024
	27,685.852
	49,101.529
	27,688.623
	49,107.770
	27,687.208
	49,125.633
	27,656.414
	49,127.151
	27,654.182
	49,130.745
	27,650.018
	49,132.107
	27,647.687
	49,132.977
	27,645.131
	49,133.531
	27,642.488
	49,144.421
	27,623.487
	49,151.382
	27,611.341
	49,146.732
	27,605.203
	49,114.757
	27,587.394
	49,116.313
	27,585.187
	49,154.850
	27,517.487
	49,180.186
	27,473.456
	49,191.550
	27,463.665
	49,195.567
	27,459.344
	49,200.601
	27,451.763
	49,203.512
	27,443.565

THE SCHEDULE — *continued*

<i>First column</i>	<i>Second column</i>	
The Authority	Protected Place	
	49,207.536	27,431.836
	49,214.886	27,419.105
	49,236.372	27,382.089
	49,258.798	27,374.738
	49,299.275	27,306.430
	49,318.316	27,273.429
	49,332.545	27,235.404

to the point of commencement and are delineated in the Plan set out below.



Senior Terminals Security
Manager, PSA Corporation
Limited

4. [*Deleted by S 420/2024 wef 17/05/2024*]

Senior Terminals Security
Manager, PSA Corporation
Limited

5. PSA Corporation Limited (KEPPEL
DISTRIPARK).

THE SCHEDULE — *continued**First column**Second column*

The Authority

Protected Place

All that area occupied by “ PSA Corporation Limited (KEPPEL DISTRI PARK) — PROTECTED PLACE” containing an area of approximately 170, 769 square metres and bounded by Keppel Road, Kampong Bahru Road and Ayer Rajah Expressway.

The boundary commences at the northern-most corner of the aforesaid “ PSA Corporation Limited (KEPPEL DISTRI PARK) — PROTECTED PLACE” which point’s adopted co-ordinates are North 28,573.4 metres and East 27,517.9 metres. The point of commencement is 1,426.6 metres south and 2,482.1 metres west of the Survey Department origin (30,000 metres North, 30,000 metres East) of co-ordinates and runs approximately as under:

<i>Bearing.</i>	<i>Distance in metres.</i>
133° 02'	15.0
133° 36'	255.0
133° 55'	50.0
134° 01'	58.8
180° 34'	5.5
196° 38'	10.9
220° 05'	18.9
218° 40'	22.5
227° 17'	73.6
227° 16'	160.3
227° 28'	78.6
228° 33'	220.0
228° 35'	136.7
316° 11'	49.3

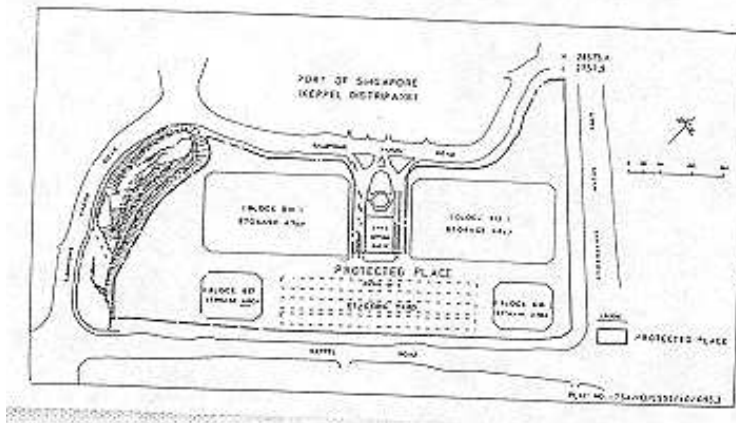
THE SCHEDULE — *continued*

<i>First column</i>	<i>Second column</i>
The Authority	Protected Place
331° 42'	23.3
344° 43'	85.1
356° 16'	63.5
09° 35'	58.5
348° 23'	23.8
299° 04'	20.2
339° 49'	7.3
65° 31'	33.9
62° 39'	27.7
65° 53'	33.1
55° 38'	11.1
48° 36'	11.3
43° 23'	27.8
49° 03'	54.5
49° 31'	17.7
78° 01'	10.9
104° 15'	16.7
123° 37'	13.0
137° 27'	103.4
47° 14'	81.7
317° 19'	108.3
337° 02'	9.6
354° 16'	11.9
22° 00'	9.9
48° 23'	61.0
43° 46'	12.1
37° 45'	11.1

THE SCHEDULE — *continued*

<i>First column</i>	<i>Second column</i>
The Authority	Protected Place
47° 07'	7.8
21° 46'	32.1
357° 57'	31.8
353° 40'	24.3
335° 06'	28.4
343° 23'	35.3
343° 28'	8.2
01° 04'	12.9
25° 23'	13.5
41° 49'	19.9

to the point of commencement and are delineated in the Plan set out hereunder.



Senior Terminals
Security Manager, PSA
Corporation Limited

6. [Deleted by S 295/2017 wef 09/06/2017]

THE SCHEDULE — *continued*

<i>First column</i>	<i>Second column</i>
The Authority	Protected Place

15° 07' 30"	213.786
-------------	---------

285° 08' 30"	48.020
--------------	--------

195° 09' 00"	214.992
--------------	---------

and bounded at the shoreline by rubble wall along successive lines of bearings and distances as under:

<i>Bearing</i>	<i>Distance in metres</i>
----------------	---------------------------

109° 53' 21"	16.587
--------------	--------

119° 24' 03"	14.438
--------------	--------

105° 52' 16"	8.508
--------------	-------

57° 45' 44"	8.552
-------------	-------

106° 06' 34"	3.285
--------------	-------

to the point of commencement.

Private Lot A10270

Commencing at a point which is 31,119.9 metres North and 18,172.7 metres East of the Survey Department origin of co-ordinates (N. 30,000m E. 30,000m) the boundaries run along successive lines of bearings and distances as under:

<i>Bearing</i>	<i>Distance in metres</i>
----------------	---------------------------

15° 09' 00"	101.219
-------------	---------

105° 09' 00"	43.5
--------------	------

15° 09' 00"	113.0
-------------	-------

285° 09' 00"	15.208
--------------	--------

236° 09' 00"	9.29
--------------	------

285° 08' 40"	24.384
--------------	--------

15° 07' 12"	36.545
-------------	--------

18° 41' 18"	111.696
-------------	---------

272° 57' 10"	110.197
--------------	---------

THE SCHEDULE — *continued*

<i>First column</i> The Authority	<i>Second column</i> Protected Place
262° 22' 10"	11.87
and bounded at the shoreline by rubble wall along successive lines of bearings and distances as under:	
211° 33' 23"	28.230
204° 59' 52"	29.610
205° 13' 08"	117.393
220° 58' 58"	45.554
188° 08' 36"	44.442
163° 56' 27"	31.635
141° 06' 13"	30.691
134° 55' 48"	16.281
122° 47' 37"	30.918
120° 55' 01"	22.416
113° 05' 48"	17.243
106° 01' 23"	20.860
102° 09' 13"	17.634

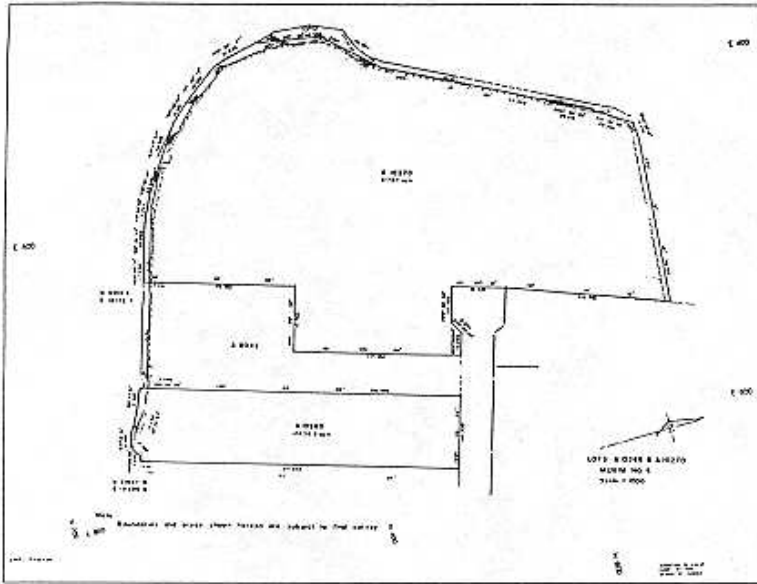
to the point of commencement.

The boundaries of "SHELL INSTALLATION AT PANDAN ROAD" are more particularly delineated in the Plan set out hereunder.

THE SCHEDULE — *continued*

<i>First column</i>	<i>Second column</i>
The Authority	Protected Place

SHELL INSTALLATION AT PANDAN ROAD



<i>First column</i>	<i>Second column</i>
The Authority	Protected Place

- | | |
|--|---|
| <p>(11) S 31/92 [17.1.92]
President and Chief
Executive Officer of
Senoko Energy Pte.
Ltd.</p> | <p>PUBLIC UTILITIES BOARD GAS TURBINE
GENERATING PLANT AT SENOKO POWER
STATION.</p> |
|--|---|

All that area comprised in land Lot 1985, Mukim 13 (Sembawang) at Senoko Road, surrounded by a fencing containing an area of about 23,016.0 square metres and bounded approximately as follows:

Commencing at the south-western corner of the chain link fence which point is 49,699.619 metres North and 24,377.873 metres East of the Survey Department origin of co-ordinates 30,000 metres

THE SCHEDULE — *continued**First column**Second column*

North, 30,000 metres East, the boundaries run along successive lines of fences of bearings and distances as under:

<i>Bearing</i>	<i>Distance in metres</i>
327° 19' 50"	151.766
327° 19' 50"	3.229
58° 17' 24"	52.057
50° 19' 39"	59.920
43° 52' 09"	23.434
56° 42' 18"	11.051
147° 20' 30"	15.263
147° 20' 30"	151.834
237° 21' 27"	56.499
237° 21' 27"	88.808

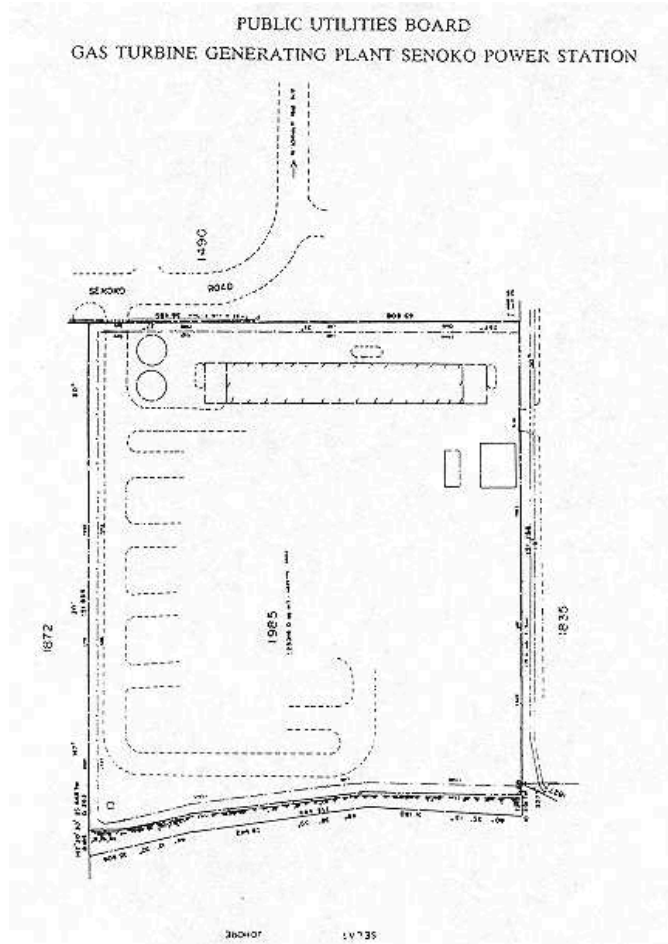
to the point of commencement.

The boundaries of the "PUBLIC UTILITIES BOARD GAS TURBINE GENERATING PLANT at Senoko Power Station" are more particularly delineated in the Plan set out hereunder.

THE SCHEDULE — *continued*

First column

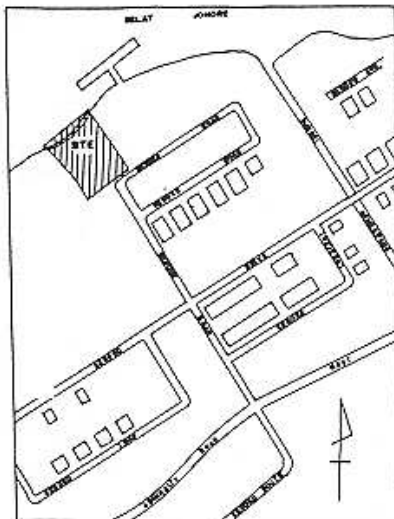
Second column



THE SCHEDULE — continued

First column

Second column



Location Plan
 Approx Scale 1:10,000
 Geotex Surveyors Pte. Ltd.
 1 Goldhill Plaza
 #03-29, Podium Block
 Singapore 1130
 Tel: 2537422 (2 lines)
 Fax: 2531700

Job Title Survey and Preparation of Plans and Descriptions for Gazetting of Gas Turbine Plant Site at Senoko Mukim No. 13 Name: Sembawang
 Scale = 1:500
 Co-ordinates of Origin: N. 30,000 m E. 30,000 m
 Notes:
 (1) Horizontal datum adopted from Government Cadastral Plan
 (2) All grid values, dimensions and levels shown are in metres
 (3) Date of survey:— October 1991.
 (4) H.W.M. = High Water Mark

[S 490/2014 wef 25/07/2014]

First column

Second column

The Authority

Protected Place

(12) S 71/92 [28.2.92] MANDAI RANGE
 Assistant Chief of
 General Staff
 (Training).

All that area comprised in State Land being part
 of Lot 60-15 and part of Lot 60-20, MUKIM NO.

THE SCHEDULE — *continued**First column**Second column*

14 (MANDAI) occupied by “MANDAI RANGE” containing an area of about 84,248 square metres and bounded approximately as follows:

Commencing at the northern-most gate post of the aforesaid “MANDAI RANGE” which point is 42,771.1 metres North and 21,931.7 metres East of the Survey Department origin of co-ordinates (30,000 metres North and 30,000 metres East), the boundaries run along successive lines of bearings and distances as under:

<i>Bearing</i>	<i>Distance in metres</i>
5° 05'	2.2
91° 46'	7.2
19° 33'	2.0
97° 39'	2.7
90° 01'	149.1
84° 12'	16.9
89° 41'	29.8
104° 29'	10.3
130° 05'	6.0
157° 11'	6.2
178° 53'	43.2
180° 44'	83.8
173° 48'	47.2
164° 46'	12.0
182° 31'	8.9
190° 14'	8.9
210° 41'	8.7
222° 11'	3.0
225° 52'	5.9

THE SCHEDULE — *continued*

<i>First column</i>	<i>Second column</i>
240° 46'	9.1
248° 03'	3.0
250° 59'	3.2
260° 25'	8.8
268° 54'	28.1
268° 57'	30.0
176° 12'	34.8
184° 15'	17.8
186° 02'	47.8
178° 07'	14.9
168° 27'	8.9
153° 39'	9.1
157° 11'	2.9
163° 42'	3.0
166° 30'	6.0
184° 52'	24.1
191° 43'	2.9
196° 06'	3.0
200° 14'	3.1
204° 53'	2.9
213° 24'	5.9
222° 57'	6.0
232° 02'	6.1
240° 18'	6.0
248° 18'	6.0
261° 19'	9.1
269° 55'	98.9
273° 33'	9.0

THE SCHEDULE — *continued*

<i>First column</i>	<i>Second column</i>
285° 47'	6.0
291° 19'	6.0
300° 37'	3.1
307° 36'	5.9
322° 39'	9.0
338° 25'	8.9
357° 14'	6.0
19° 13'	20.5
14° 12'	23.8
79° 52'	4.4
0° 49'	206.3
63° 33'	5.1
62° 34'	4.6 (across a drain)
334° 11'	8.9
346° 27'	5.9
355° 02'	3.0
0° 47'	6.0
4° 40'	47.1
20° 11'	32.9
12° 41'	31.5
284° 53'	11.4
294° 05'	6.1
5° 05'	4.1
5° 05'	6.4 (along a gate)

to the point of commencement.

The boundaries of “MANDAI RANGE” are more particularly delineated and edged pink on Survey Plan No. LE/91/59 GAZETTE filed in the

THE SCHEDULE — *continued**First column**Second column*office of the Director, Lands and Estates
Organisation, Ministry of Defence, Singapore.(13) [*Deleted by S*
999/2020 wef
09/12/2020]*First column**Second column*

The Authority

Protected Place

(14) S 105/92 [20.3.92] TUAS JETTY
Singapore
Technologies
Logistics Pte. Ltd.All that area comprised in part of Lot 1502, Mukim
No. 7 (TUAS) part of foreshore and part of seabed
to the south-west of the mainland occupied by
“TUAS JETTY” containing an area of about 1.60
hectares and bounded approximately as follows:Commencing at the northern-most corner of the
perimeter fence of the aforesaid “TUAS JETTY”
which point’s co-ordinates are 30,416.2 metres
North and 4,204.5 metres East of the Survey
Department origin of co-ordinates (30,000 metres
North and 30,000 metres East), the boundaries run
along successive lines of bearings and distances as
under:

<i>Bearing</i>	<i>Distance in metres</i>
149° 23'	52.0 (along chain link fence and gates)
239° 20'	52.1 (along chain link fence)
328° 22'	10.8 (along chain link fence)
229° 24'	48.0 (about one metre offset from slipway)

THE SCHEDULE — *continued*

<i>First column</i>	<i>Second column</i>
The Authority	Protected Place
319° 04'	9.0 (along slipway)
49° 28'	50.1 (about one metre offset from slipway)
239° 23'	854.8 (about one metre offset from jetty)
202° 39'	13.5 (about one metre offset from jetty)
157° 29'	50.6 (about one metre offset from jetty)
247° 31'	18.0 (about one metre offset from jetty)
337° 29'	132.0 (about 2 metres offset from jetty)
67° 39'	18.0 (about one metre offset from jetty)
157° 28'	50.6 (about one metre offset from jetty)
111° 58'	13.2 (about one metre offset from jetty)
59° 23'	852.5 (about one metre offset from jetty)
330° 39'	20.0 (along chain link fence)
59° 24'	52.1 (along chain link fence)

to the point of commencement.

The boundaries of “TUAS JETTY” are more particularly delineated and edged pink on Survey Plan No. LE/92/1/GAZETTE filed in the office of the Director, Lands and Estates Organisation, Ministry of Defence, Singapore.

THE SCHEDULE — *continued*

<i>First column</i>	<i>Second column</i>
The Authority	Protected Place
(15) S 144/92 [27.3.92] Commander, HQ 2 PDF Command.	NEE SOON WAREHOUSE

All that area comprised in part of State Land Lots 15, 17 and part of State Reserve (Old Sembawang Road), Mukim No. 19 (NORTH SELETAR) occupied by “NEE SOON WAREHOUSE” containing an area of about 7,406 square metres and bounded approximately as follows:

Commencing at the southern-most corner of the perimeter fence of the aforesaid “NEE SOON WAREHOUSE” which point is 43,516.7 metres North and 26,683.2 metres East of the Survey Department origin of co-ordinates (30,000 metres North and 30,000 metres East), the boundaries run along successive lines of fence of bearings and distances as under:

<i>Bearing</i>	<i>Distance in metres</i>
276° 49'	25.0
296° 13'	39.9
330° 17'	4.2
26° 05'	36.8
19° 18'	23.8
21° 16'	31.4
44° 14'	18.1
116° 06'	60.4
207° 03'	6.0
196° 16'	38.1
205° 59'	32.0
207° 26'	1.4 (across gate)
206° 11'	12.2 (across gate)

THE SCHEDULE — *continued*

<i>First column</i>	<i>Second column</i>
The Authority	Protected Place

206° 14'	13.9
----------	------

to the point of commencement.

The boundaries of “NEE SOON WAREHOUSE” are more particularly delineated and edged pink on Survey Plan No. LE/92/3/GAZETTE filed in the office of the Director, Lands and Estates Organisation, Ministry of Defence, Singapore.

<i>First column</i>	<i>Second column</i>
The Authority	Protected Place

(16) S 146/92 [27.3.92] S 212/92 The Director, Electricity Department, Public Utilities Board.	PUBLIC UTILITIES BOARD 230/66/22/6.6 KV SUBSTATION AT KAMPONG JAVA ROAD. All that area comprised in part of Lot 801 TS No. 28 occupied by “PUB 230/66/22/6.6 KV SUBSTATION” containing an area of about 11,005 square metres and bounded approximately as follows:
---	--

Commencing at a point on the northern-most corner of the perimeter fence of the aforesaid “PUB SUBSTATION”, which point is 32,866.4 metres North and 29,286.6 metres East of the Survey Department origin of co-ordinates (30,000 metres North, 30,000 metres East), the boundaries run along successive lines of fence of bearings and distances as under:

<i>Bearing</i>	<i>Distance in metres</i>
201° 42'	36.9
199° 35'	35.5
197° 45'	35.7
204° 53'	36.2
197° 08'	10.1
296° 43'	44.3

THE SCHEDULE — *continued*

<i>First column</i>	<i>Second column</i>
The Authority	Protected Place
207° 45'	0.5
297° 03'	31.1
297° 11'	6.0 (along a gate)
297° 03'	14.1
351° 21'	35.3
77° 25'	7.9
69° 54'	26.8
55° 01'	36.0
30° 19'	21.3
314° 02'	9.8
350° 13'	0.2
82° 55'	24.7

to a point where it meets a wall, thence along successive lines which follow a series of walls, gates and fence of bearings and distances as under:

<i>Bearing</i>	<i>Distance in metres</i>
82° 45'	4.7 (along a wall)
83° 06'	9.0 (along a gate)
83° 11'	4.7 (along a wall)
83° 15'	15.4 (along a fence)
82° 05'	4.7 (along a wall)
82° 55'	8.3 (along a gate)
83° 03'	4.7 (along a wall)
84° 16'	3.8 (along a fence)

to the point of commencement.

The boundaries of the “PUB 230/66/22/6.6 KV SUBSTATION” are more particularly delineated

THE SCHEDULE — *continued**First column**Second column*

The Authority

Protected Place

and edged pink on Survey Plan No. 30017 filed in the office of the Chief Surveyor, Singapore.

*First column**Second column*

The Authority

Protected Place

- (17) S 351/92 The TOPPAN LEEFUNG PTE. LTD. UBI PLANT, 97 President and Chief UBI AVENUE 4, SINGAPORE 408754 Executive Officer, Toppan Leefung Pte. Ltd.

All that area comprised in part of Lot 3134 Pt, Mukim 23, Paya Lebar, occupied by Toppan Leefung Pte. Ltd. and Toppan Security Printing Pte. Ltd. containing an area of approximately 5,501.7 square metres and bounded approximately as follows:

Commencing at a point on the southern corner of the perimeter fence of the aforesaid Toppan Leefung Pte. Ltd. and Toppan Security Printing Pte. Ltd., which is approximately 35,149.244 metres North and 34,761.004 metres East of the Survey Department origin of co-ordinates, the boundary runs along a fence on a bearing of 66° 44' 44" for a distance of 43.784 metres (partly across the main entrance gate), thence along successive lines of fences of bearings and distances as under:

<i>Bearing</i>	<i>Distance in metres</i>
25° 12' 30"	8.712
338° 05' 30"	28.701
336° 34' 20"	11.921
333° 32' 00"	11.921
330° 30' 20"	11.923
327° 28' 00"	11.922

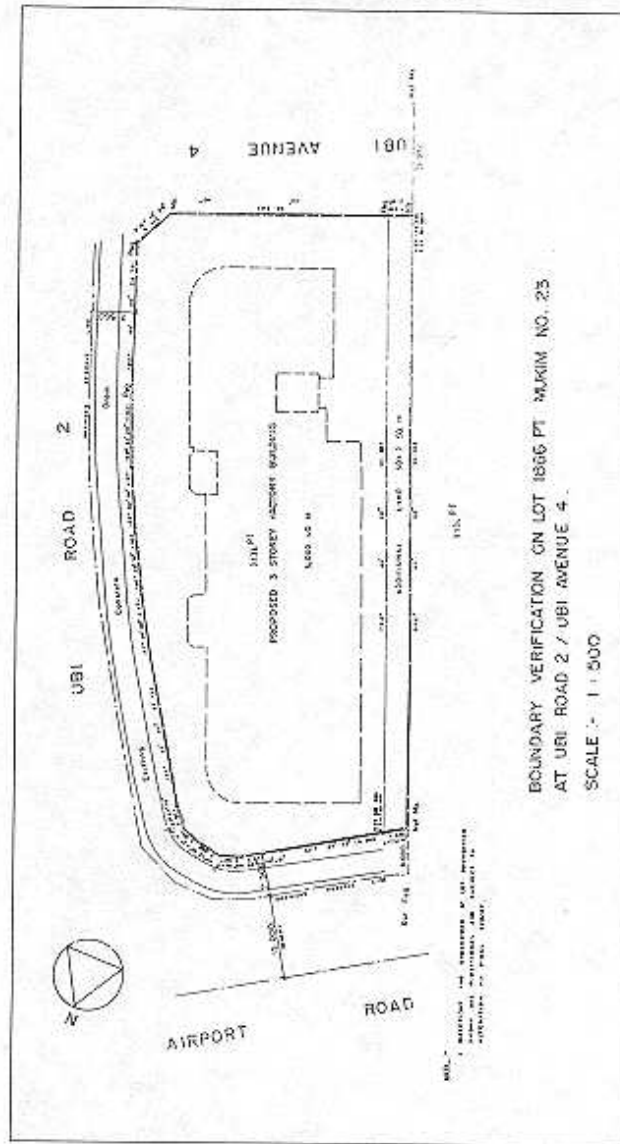
THE SCHEDULE — *continued*

325° 56' 20"	26.724
317° 37' 10"	3.946
292° 34' 50"	3.991
270° 13' 50"	3.988
246° 19' 40"	3.987
236° 43' 20"	6.841
237° 07' 40"	19.366
237° 51' 14"	4.555
156° 44' 40"	111.125

to the point of commencement.

The boundaries of Toppan Leefung Pte. Ltd. and Toppan Security Printing Pte. Ltd. are more particularly delineated in the Plan set out hereunder.

THE SCHEDULE — continued



[S 637/2015 wef 04/11/2015]

THE SCHEDULE — *continued*

<i>First column</i>	<i>Second column</i>
The Authority	Protected Place
(18) S 505/92 [11.12.92] Assistant Chief of General Staff (Training).	PULAU TEKONG M203 RANGE

All that area comprised in parts of State Land Lots 482, 49, 503, 533, 545, 298, part of foreshore, part of seabed, part of Sungei Seminei and part of State Reserve, Mukim No. 33 (PULAU TEKONG) occupied by “PULAU TEKONG M203 RANGE” containing an area of about 168,078 square metres and bounded approximately as follows:

Commencing at a point on the northern-most corner of the boundary of the aforesaid “PULAU TEKONG M203 RANGE” which point is 42,884.0 metres North and 50,435.6 metres East of the Survey Department origin of co-ordinates (30,000 metres North and 30,000 metres East), the boundaries run along successive lines of bearings and distances as under:

<i>Bearing</i>	<i>Distance in metres</i>
109° 15'	170.0 (partly across Sungei Seminei)
176° 53'	17.7 (to meet the northern edge of cattle fence)
176° 53'	39.3 (along cattle fence)
175° 21'	50.4 (along cattle fence)
167° 22'	22.9 (along cattle fence)
162° 29'	27.7 (along cattle fence)
158° 34'	25.1 (along cattle fence)
143° 50'	32.0 (along cattle fence)
183° 58'	12.7 (along cattle fence)
200° 13'	14.9 (along cattle fence)
189° 49'	85.2 (along cattle fence)

THE SCHEDULE — *continued*

<i>First column</i>	<i>Second column</i>
The Authority	Protected Place
189° 49'	277.5 (partly across the sea)
295° 43'	410.0 (across the sea)
26° 02'	520.0 (partly across the sea)

to the point of commencement.

The boundaries of “PULAU TEKONG M203 RANGE” are more particularly delineated and edged pink on Survey Plan No. LE/92/16 GAZETTE filed in the office of the Director, Lands and Estates Organisation, Ministry of Defence, Singapore.

[S 506/93 wef 17/12/1993]

[S 458/96 wef 01/01/1995]

LEGISLATIVE HISTORY
PROTECTED PLACES (CONSOLIDATION) ORDER
(CHAPTER 256, O 4)

This Legislative History is provided for the convenience of users of the Protected Places (Consolidation) Order. It is not part of this Order.

- 1. G. N. No. S 319/1991 — Protected Places (Consolidation) Order 1991**
Date of commencement : Date not available
- 2. G. N. No. S 366/1993 — Protected Places (Consolidation) (Amendment No. 3) Order 1993**
Date of commencement : 10 September 1993
- 3. G. N. No. S 506/1993 — Protected Places (Consolidation) (Amendment No. 4) Order 1993**
Date of commencement : 17 December 1993
- 4. 1993 Revised Edition — Protected Places (Consolidation) Order**
Date of operation : 1 April 1993
- 5. G. N. No. S 458/1996 — Protected Places (Consolidation) (Amendment) Order 1996**
Date of commencement : 1 January 1995
- 6. G. N. No. S 40/1998 — Protected Places (Consolidation) (Amendment) Order 1998**
Date of commencement : 23 January 1998
- 7. G. N. No. S 418/2000 — Protected Places (Consolidation) (Amendment) Order 2000**
Date of commencement : 20 September 2000
- 8. G. N. No. S 75/2005 — Protected Places (Consolidation) (Amendment) Order 2005**
Date of commencement : 15 February 2005
- 9. G. N. No. S 344/2005 — Protected Places (Consolidation) (Amendment No. 2) Order 2005**
Date of commencement : 3 June 2005
- 10. G. N. No. S 298/2006 — Protected Places (Consolidation) (Amendment) Order 2006**
Date of commencement : 8 June 2006

- 11. G. N. No. S 124/2008 — Protected Places (No. 2) Order 2008**
Date of commencement : 14 March 2008
- 12. G. N. No. S 591/2009 — Protected Places (Consolidation) (Amendment) Order 2009**
Date of commencement : 1 December 2009
- 13. G. N. No. S 620/2009 — Protected Places (Consolidation) (Amendment No. 2) Order 2009**
Date of commencement : 15 December 2009
- 14. G. N. No. S 611/2010 — Protected Places (Consolidation) (Amendment) Order 2010**
Date of commencement : 26 October 2010
- 15. G. N. No. S 552/2011 — Protected Places (Consolidation) (Amendment) Order 2011**
Date of commencement : 29 September 2011
- 16. G.N. No. S 61/2012 — Protected Places (Consolidation) (Amendment) Order 2012**
Date of commencement : 13 February 2012
- 17. G.N. No. S 19/2013 — Protected Places (Consolidation) (Amendment) Order 2013**
Date of commencement : 16 January 2013
- 18. G.N. No. S 486/2014 — Protected Places (Consolidation) (Amendment No. 4) Order 2014**
Date of commencement : 24 July 2014
- 19. G.N. No. S 490/2014 — Protected Places (Miscellaneous Amendments) Order 2014**
Date of commencement : 25 July 2014
- 20. G.N. No. S 637/2015 — Protected Places (Miscellaneous Amendments) (No. 2) Order 2015**
Date of commencement : 4 November 2015
- 21. G.N. No. S 230/2016 — Protected Places (No. 3) Order 2016**
Date of commencement : 24 May 2016
- 22. G.N. No. S 295/2017 — Protected Places (No. 3) Order 2017**
Date of commencement : 9 June 2017

23. G.N. No. S 399/2017 — Protected Places (Miscellaneous Amendments) Order 2017

Date of commencement : 19 July 2017

24. G.N. No. S 585/2018 — Protected Places (No. 9) Order 2018

Date of commencement : 26 September 2018

25. G.N. No. S 789/2019 — Infrastructure Protection (Protected Places) (No. 6) Order 2019

Date of commencement : 1 December 2019

26. G.N. No. S 408/2020 — Infrastructure Protection (Protected Places) (No. 11) Order 2020

Date of commencement : 30 May 2020

27. G.N. No. S 944/2020 — Infrastructure Protection (Protected Places) (No. 15) Order 2020

Date of commencement : 6 November 2020

28. G.N. No. S 999/2020 — Infrastructure Protection (Protected Places) (No. 16) Order 2020

Date of commencement : 9 December 2020

29. G.N. No. S 420/2024 — Infrastructure Protection (Protected Places) (No. 15) Order 2024

Date of commencement : 17 May 2024