
First published in the Government *Gazette*, Electronic Edition, on 10th June 2011 at 5:00 pm.

No. S 327

PROTECTED AREAS AND PROTECTED PLACES ACT
(CHAPTER 256)

PROTECTED PLACES (NO. 3)
ORDER 2011

ARRANGEMENT OF PARAGRAPHS

Paragraph

1. Citation and commencement
 2. Premises declared to be protected place
The Schedule
-

In exercise of the powers conferred by section 5(1) of the Protected Areas and Protected Places Act, the Minister for Home Affairs hereby makes the following Order:

Citation and commencement

1. This Order may be cited as the Protected Places (No. 3) Order 2011 and shall come into operation on 10th June 2011.

Premises declared to be protected place

2. The premises described in the second column of the Schedule are hereby declared to be a protected place for the purposes of the Act, and no person shall be in those premises unless he is in possession of a pass-card or permit issued by the authority specified in the first column of the Schedule or has received the permission of an authorised officer on duty at the premises to enter the premises.

THE SCHEDULE

<i>First column</i>	<i>Second column</i>
The Authority	Protected Place
Commissioner of Police, Singapore Police Force	NEW PHOENIX PARK SECTOR B SECURITY CHECKPOINT.

All that area comprised in part of Land Lots 939W Pt, 992P Pt, 934N Pt and 936L Pt in TS No. 29 occupied by “NEW PHOENIX PARK SECTOR B SECURITY CHECKPOINT” containing an area of about 1187.9 square metres bounded approximately as follows:

Commencing at a point of the aforesaid “NEW PHOENIX PARK SECTOR B SECURITY CHECKPOINT” which point is 34037.350 metres North and 29112.418 metres East of the Singapore Land Authority SVY21 Datum, the boundaries run along successive lines of co-ordinates approximately as follows:

<i>Northing</i>	<i>Easting</i>
34037.350	29112.418
34034.610	29116.205
34033.371	29118.139
34032.544	29119.580
34031.820	29121.052
34030.869	29123.127
34029.975	29125.233
34028.315	29129.564
34027.861	29130.888
34037.773	29138.924
34042.374	29138.981
34042.400	29142.392
34042.383	29144.777
34041.634	29144.770
34041.639	29145.803

THE SCHEDULE — *continued*

<i>First column</i>	<i>Second column</i>
The Authority	Protected Place
34041.590	29146.608
34041.428	29154.197
34041.396	29154.358
34041.266	29154.358
34041.194	29158.809
34042.550	29158.827
34042.549	29159.496
34008.021	29159.835
34008.662	29157.114
34006.694	29156.418
34014.890	29126.840
34015.598	29124.585
34016.706	29121.328
34017.320	29119.722
34017.953	29118.324
34019.972	29114.102
34021.117	29112.052
34022.336	29110.042
34023.630	29108.077
34026.416	29104.233
34028.311	29105.660
34034.224	29110.060
34036.401	29111.713

to the point of commencement.

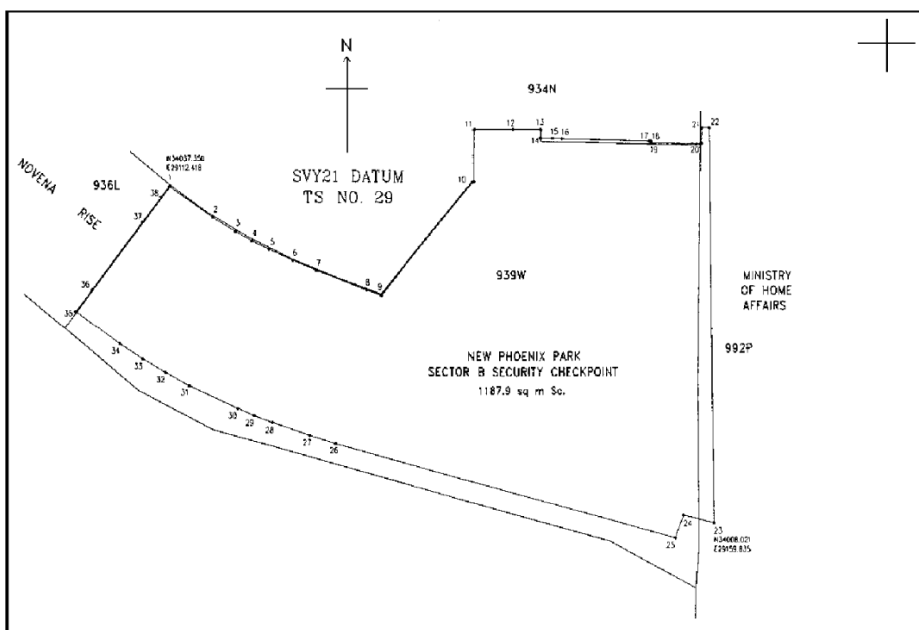
The boundaries of “NEW PHOENIX PARK SECTOR B SECURITY CHECKPOINT” are more particularly delineated in the Survey Plan No. 4036/NR/11 filed in the office of the Chief

THE SCHEDULE — *continued**First column**Second column*

The Authority

Protected Place

Surveyor, Singapore, a copy of which is set out below.



Made this 8th day of June 2011.

BENNY LIM
Permanent Secretary,
Ministry of Home Affairs,
Singapore.

[MHA (PS) 12/2/07 TF 8; CP/C/198/39 V29; AG/LLRD/SL/256/2010/1 Vol. 1]