
First published in the *Government Gazette*, Electronic Edition, on 30 January 2024 at 5 pm.

No. S 52

INFRASTRUCTURE PROTECTION ACT 2017

INFRASTRUCTURE PROTECTION (PROTECTED PLACES) (NO. 9) ORDER 2024

ARRANGEMENT OF PARAGRAPHS

Paragraph

1. Citation and commencement
 2. Premises declared to be protected places
 3. Revocations
- The Schedule
-

In exercise of the powers conferred by sections 14(1) and 19(1) of the Infrastructure Protection Act 2017, the Minister for Home Affairs makes the following Order:

Citation and commencement

1. This Order is the Infrastructure Protection (Protected Places) (No. 9) Order 2024 and comes into operation on 31 January 2024.

Premises declared to be protected places

2. The premises described in the second column of the Schedule are declared to be protected places for the purposes of the Act, and the person specified in the first column of that Schedule is designated as the authority of the corresponding protected place.

Revocations

3.—(1) In the Protected Places (No. 8) Order 2012 (G.N. No. S 453/2012), in the Schedule, delete items (3), (16) and (17).

(2) In the Protected Places (No. 6) Order 2013 (G.N. No. S 307/2013), in the Schedule, delete items (5) to (8).

(3) In the Protected Places (No. 8) Order 2013 (G.N. No. S 309/2013), in the Schedule, delete item (2).

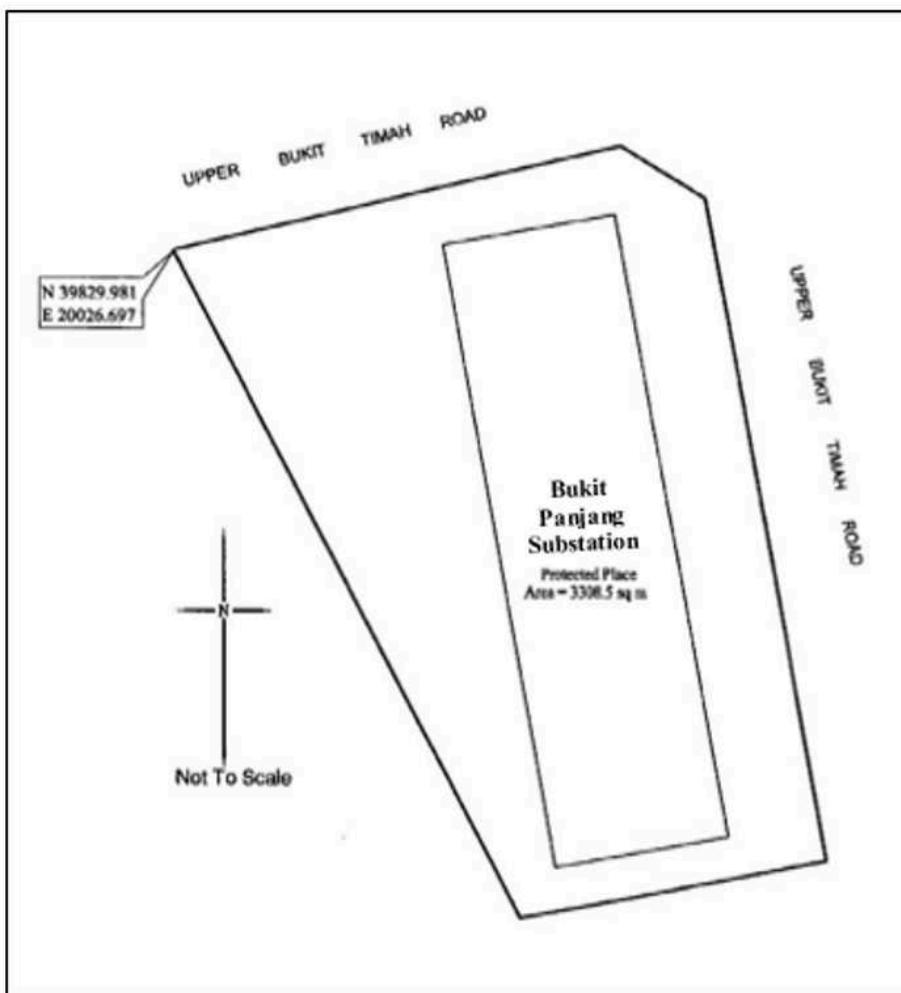
(4) In the Protected Places (No. 9) Order 2013 (G.N. No. S 310/2013), in the Schedule, delete item (1).

(5) In the Protected Places (No. 6) Order 2014 (G.N. No. S 532/2014), in the Schedule, delete item (1).

THE SCHEDULE

Paragraph 2

<i>First column</i>	<i>Second column</i>																												
The Authority	Protected Place																												
1. Chief Executive Officer, SP PowerGrid Ltd	<p style="text-align: center;">BUKIT PANJANG SUBSTATION</p> <p>All that area comprised in part of Lot 03233P in Mukim No. 10 occupied by “BUKIT PANJANG SUBSTATION” containing an area of about 3308.5 square metres and bounded approximately as follows:</p> <p>Commencing at a point 39829.981 metres North and 20026.697 metres East of the Singapore Land Authority SVY 21 Datum, the boundaries run along successive lines of coordinates approximately as follows:</p> <table border="0" style="margin-left: auto; margin-right: auto;"> <thead> <tr> <th style="text-align: center;"><i>Northing</i></th> <th style="text-align: center;"><i>Easting</i></th> </tr> </thead> <tbody> <tr><td style="text-align: center;">39829.981</td><td style="text-align: center;">20026.697</td></tr> <tr><td style="text-align: center;">39830.075</td><td style="text-align: center;">20026.713</td></tr> <tr><td style="text-align: center;">39834.781</td><td style="text-align: center;">20046.440</td></tr> <tr><td style="text-align: center;">39836.244</td><td style="text-align: center;">20052.573</td></tr> <tr><td style="text-align: center;">39840.940</td><td style="text-align: center;">20072.718</td></tr> <tr><td style="text-align: center;">39835.552</td><td style="text-align: center;">20081.350</td></tr> <tr><td style="text-align: center;">39835.482</td><td style="text-align: center;">20081.393</td></tr> <tr><td style="text-align: center;">39812.748</td><td style="text-align: center;">20085.500</td></tr> <tr><td style="text-align: center;">39789.201</td><td style="text-align: center;">20089.675</td></tr> <tr><td style="text-align: center;">39766.301</td><td style="text-align: center;">20093.690</td></tr> <tr><td style="text-align: center;">39762.493</td><td style="text-align: center;">20073.679</td></tr> <tr><td style="text-align: center;">39760.411</td><td style="text-align: center;">20062.220</td></tr> <tr><td style="text-align: center;">39779.810</td><td style="text-align: center;">20052.235</td></tr> </tbody> </table> <p>to the point of commencement.</p> <p>The boundaries of “BUKIT PANJANG SUBSTATION” are more particularly delineated in the Survey Plan set out below.</p>	<i>Northing</i>	<i>Easting</i>	39829.981	20026.697	39830.075	20026.713	39834.781	20046.440	39836.244	20052.573	39840.940	20072.718	39835.552	20081.350	39835.482	20081.393	39812.748	20085.500	39789.201	20089.675	39766.301	20093.690	39762.493	20073.679	39760.411	20062.220	39779.810	20052.235
<i>Northing</i>	<i>Easting</i>																												
39829.981	20026.697																												
39830.075	20026.713																												
39834.781	20046.440																												
39836.244	20052.573																												
39840.940	20072.718																												
39835.552	20081.350																												
39835.482	20081.393																												
39812.748	20085.500																												
39789.201	20089.675																												
39766.301	20093.690																												
39762.493	20073.679																												
39760.411	20062.220																												
39779.810	20052.235																												

THE SCHEDULE — *continued*

First column

The Authority

2. Chief Executive Officer, SP PowerGrid Ltd

Second column

Protected Place

CHANDER SUBSTATION

All that area comprised in part of Lot 01572K in Town Subdivision No. 18 occupied by “CHANDER SUBSTATION” containing an area of about 1571.2 square metres and bounded approximately as follows:

Commencing at a point 32246.192 metres North and 29996.719 metres East of the Singapore Land Authority SVY 21 Datum, the boundaries run along

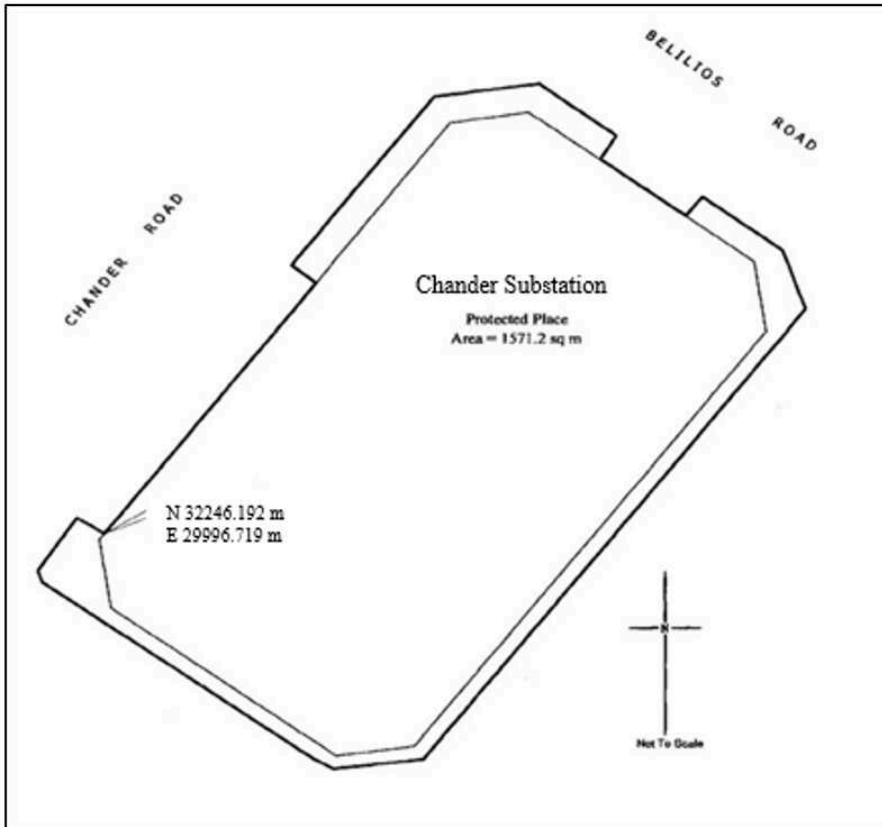
 THE SCHEDULE — *continued*

<i>First column</i>	<i>Second column</i>
The Authority	Protected Place
successive lines of coordinates approximately as follows:	
<i>Northing</i>	<i>Easting</i>
32246.192	29996.719
32266.565	30011.894
32267.983	30010.140
32281.514	30020.361
32282.534	30027.848
32278.367	30033.333
32277.356	30032.748
32276.492	30032.164
32271.937	30038.280
32272.773	30038.905
32273.460	30039.463
32269.149	30045.182
32264.491	30046.815
32242.643	30030.507
32227.877	30019.449
32227.139	30013.061
32227.910	30011.603
32242.234	29992.293
32243.160	29991.983
32247.494	29994.776
32246.867	29995.811

to the point of commencement.

The boundaries of “CHANDER SUBSTATION” are more particularly delineated in the Survey Plan set out below.

THE SCHEDULE — *continued*



First column

Second column

The Authority

Protected Place

3. Chief Executive Officer, SP PowerGrid Ltd

CHANGI COAST SUBSTATION

All that area comprised in part of Lot 04174N in Mukim No. 31 occupied by “CHANGI COAST SUBSTATION” containing an area of about 3103.7 square metres and bounded approximately as follows:

Commencing at a point 39812.623 metres North and 46895.748 metres East of the Singapore Land Authority SVY 21 Datum, the boundaries run along successive lines of coordinates approximately as follows:

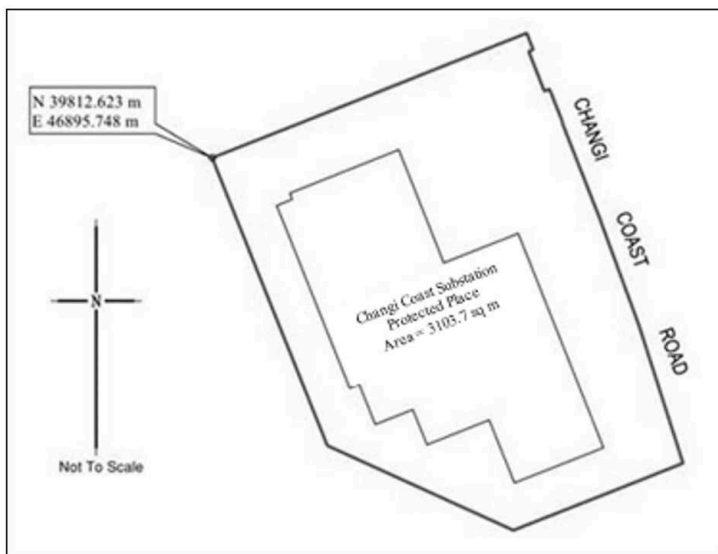
<i>Northing</i>	<i>Easting</i>
39812.623	46895.748

 THE SCHEDULE — *continued*

<i>First column</i>	<i>Second column</i>
The Authority	Protected Place
39819.165	46912.246
39825.692	46928.622
39831.066	46942.141
39828.668	46943.053
39828.588	46943.088
39828.369	46942.452
39828.047	46942.564
39822.480	46944.755
39822.780	46945.481
39818.061	46947.370
39817.654	46947.437
39803.924	46952.819
39787.770	46958.742
39767.497	46965.207
39763.086	46954.142
39757.602	46940.174
39770.120	46912.715
39792.535	46903.764

to the point of commencement.

The boundaries of “CHANGI COAST SUBSTATION” are more particularly delineated in the Survey Plan set out below.

THE SCHEDULE — *continued**First column**Second column*

The Authority

Protected Place

4. Chief
Executive
Officer,
SP PowerGrid
Ltd

CHANGI SOUTH SUBSTATION

All that area comprised in part of Lot 1011K in Mukim No. 27 occupied by “CHANGI SOUTH SUBSTATION” containing an area of about 5454.9 square metres and bounded approximately as follows:

Commencing at a point 36381.198 metres North and 42921.838 metres East of the Singapore Land Authority SVY 21 Datum, the boundaries run along successive lines of coordinates approximately as follows:

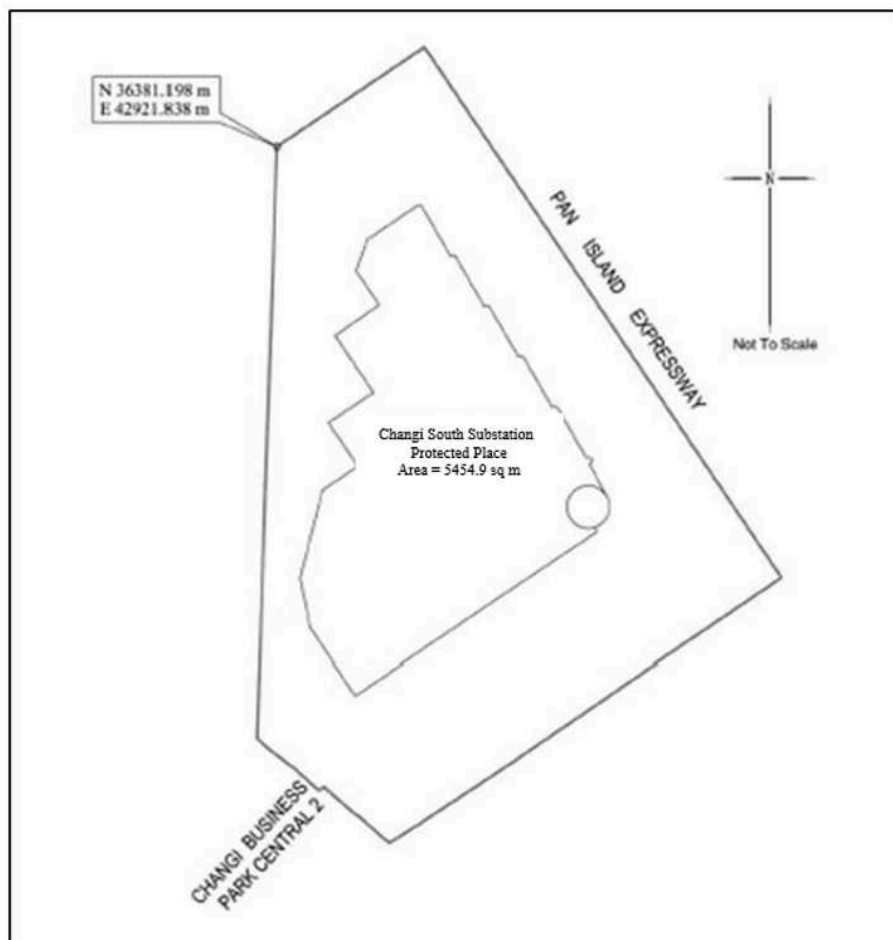
<i>Northing</i>	<i>Easting</i>
36381.198	42921.838
36363.229	42921.255
36336.022	42920.335
36309.477	42919.448
36293.786	42918.901
36292.167	42920.715

 THE SCHEDULE — *continued*

<i>First column</i>	<i>Second column</i>
The Authority	Protected Place
36289.321	42924.427
36286.171	42927.971
36286.071	42928.084
36286.622	42928.878
36286.445	42929.097
36286.389	42929.018
36282.473	42933.555
36282.406	42933.631
36282.476	42933.692
36278.264	42938.501
36278.306	42938.567
36280.894	42942.660
36289.889	42956.263
36302.367	42974.493
36317.311	42996.649
36336.873	42983.490
36357.986	42969.313
36395.973	42943.712
36389.065	42933.458

to the point of commencement.

The boundaries of “CHANGI SOUTH SUBSTATION” are more particularly delineated in the Survey Plan set out below.

THE SCHEDULE — *continued**First column**Second column*

The Authority

Protected Place

5. Chief
Executive
Officer,
SP PowerGrid
Ltd

CHOA CHU KANG NEW TOWN SUBSTATION

All that area comprised in part of Lot 01936W in Mukim No. 11 occupied by “CHOA CHU KANG NEW TOWN SUBSTATION” containing an area of about 4309.5 square metres and bounded approximately as follows:

Commencing at a point 41321.034 metres North and 18051.665 metres East of the Singapore Land Authority SVY 21 Datum, the boundaries run along

 THE SCHEDULE — *continued*

<i>First column</i>	<i>Second column</i>
The Authority	Protected Place
successive lines of coordinates approximately as follows:	
<i>Northing</i>	<i>Easting</i>
41321.034	18051.665
41316.339	18056.177
41310.068	18062.148
41282.869	18060.617
41251.954	18060.210
41232.421	18060.269
41225.404	18047.911
41216.195	18032.357
41223.008	18027.927
41231.852	18022.139
41258.533	18004.700
41279.659	18007.362
41303.567	18010.429
41304.468	18016.446
41305.002	18019.441
41306.303	18025.254
41307.716	18029.557
41309.073	18032.684
41308.793	18032.847
41311.581	18038.751
41311.928	18038.695
41315.035	18044.172
41317.098	18047.006
41319.716	18050.163

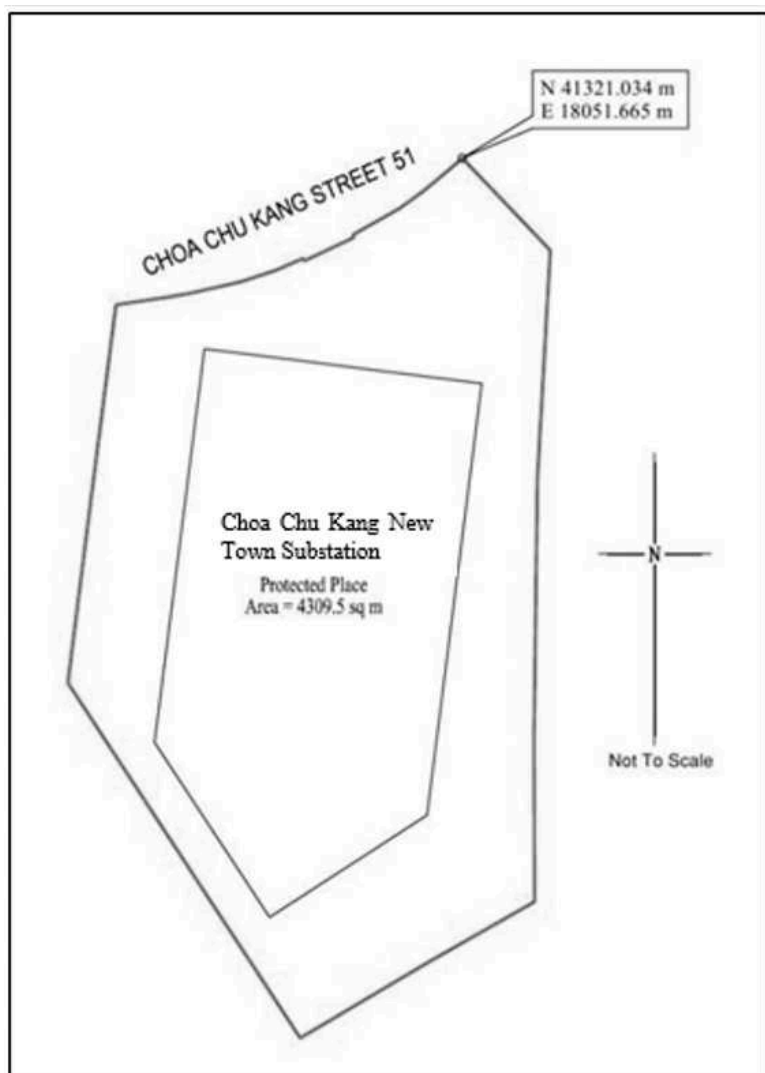
THE SCHEDULE — *continued**First column**Second column*

The Authority

Protected Place

to the point of commencement.

The boundaries of “CHOA CHU KANG NEW TOWN SUBSTATION” are more particularly delineated in the Survey Plan set out below.

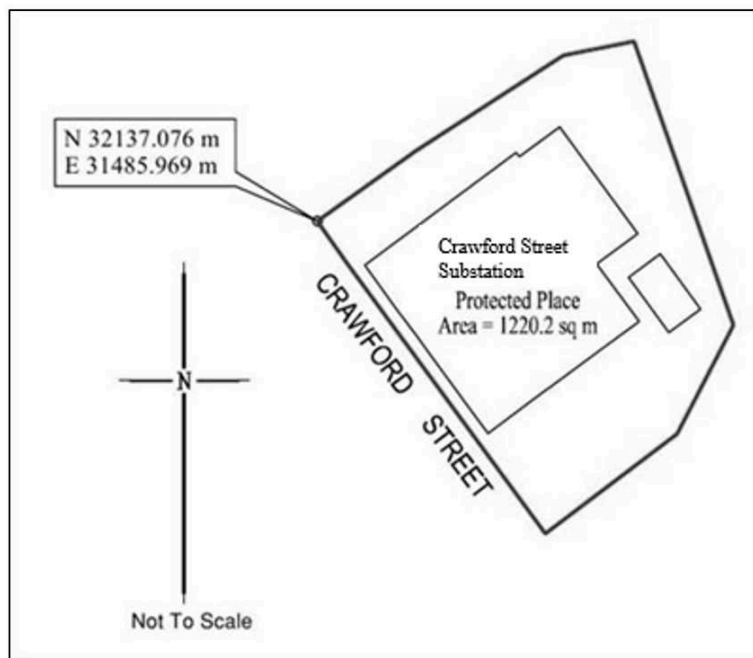


THE SCHEDULE — *continued*

<i>First column</i>	<i>Second column</i>																		
The Authority	Protected Place																		
6. Chief Executive Officer, SP PowerGrid Ltd	<p>CRAWFORD STREET SUBSTATION</p> <p>All that area comprised in part of Lot 01822A in Town Subdivision No. 17 occupied by “CRAWFORD STREET SUBSTATION” containing an area of about 1220.2 square metres and bounded approximately as follows:</p> <p>Commencing at a point 32137.076 metres North and 31485.969 metres East of the Singapore Land Authority SVY 21 Datum, the boundaries run along successive lines of coordinates approximately as follows:</p> <table border="0" style="margin-left: auto; margin-right: auto;"> <thead> <tr> <th style="text-align: left;"><i>Northing</i></th> <th style="text-align: left;"><i>Easting</i></th> </tr> </thead> <tbody> <tr> <td>32137.076</td> <td>31485.969</td> </tr> <tr> <td>32132.789</td> <td>31488.992</td> </tr> <tr> <td>32105.117</td> <td>31509.375</td> </tr> <tr> <td>32115.288</td> <td>31522.901</td> </tr> <tr> <td>32126.439</td> <td>31528.674</td> </tr> <tr> <td>32155.475</td> <td>31518.470</td> </tr> <tr> <td>32154.027</td> <td>31511.206</td> </tr> <tr> <td>32144.257</td> <td>31496.028</td> </tr> </tbody> </table>	<i>Northing</i>	<i>Easting</i>	32137.076	31485.969	32132.789	31488.992	32105.117	31509.375	32115.288	31522.901	32126.439	31528.674	32155.475	31518.470	32154.027	31511.206	32144.257	31496.028
<i>Northing</i>	<i>Easting</i>																		
32137.076	31485.969																		
32132.789	31488.992																		
32105.117	31509.375																		
32115.288	31522.901																		
32126.439	31528.674																		
32155.475	31518.470																		
32154.027	31511.206																		
32144.257	31496.028																		

to the point of commencement.

The boundaries of “CRAWFORD STREET SUBSTATION” are more particularly delineated in the Survey Plan set out below.

THE SCHEDULE — *continued**First column**Second column*

The Authority

Protected Place

7. Chief
Executive
Officer,
SP PowerGrid
Ltd

EUNOS FLYOVER SUBSTATION

All that area comprised in part of Lot 06720M in Mukim No. 23 occupied by “EUNOS FLYOVER SUBSTATION” containing an area of about 3363.2 square metres and bounded approximately as follows:

Commencing at a point 34055.946 metres North and 35983.982 metres East of the Singapore Land Authority SVY 21 Datum, the boundaries run along successive lines of coordinates approximately as follows:

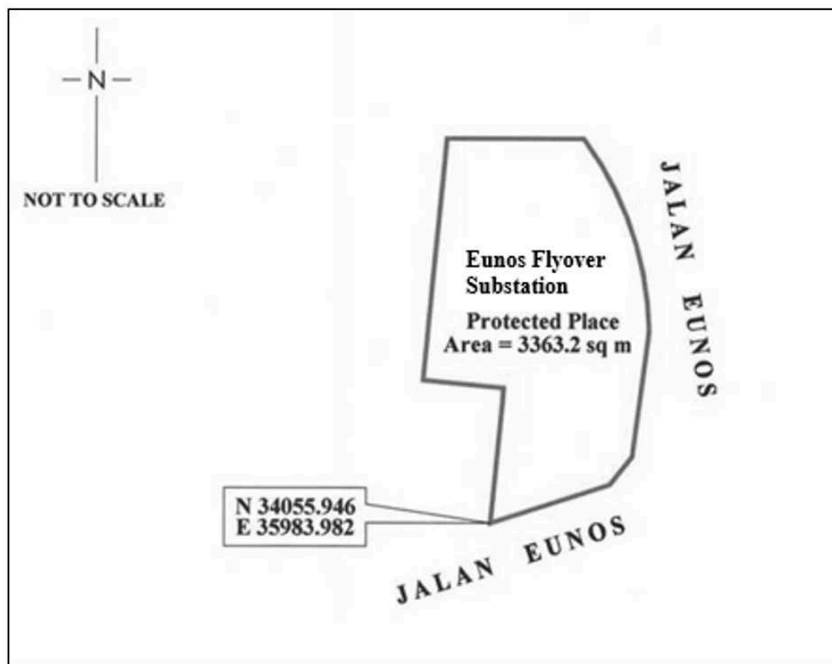
<i>Northing</i>	<i>Easting</i>
34055.946	35983.982
34064.776	36011.293
34071.181	36016.449
34098.236	36020.088

 THE SCHEDULE — *continued*

<i>First column</i>	<i>Second column</i>
The Authority	Protected Place
	34100.366
	36020.296
	34106.673
	36019.895
	34113.313
	36018.883
	34119.838
	36017.292
	34126.199
	36015.135
	34132.346
	36012.429
	34138.232
	36009.195
	34143.813
	36005.456
	34144.213
	36005.134
	34144.191
	35973.813
	34126.241
	35972.079
	34108.293
	35970.338
	34088.763
	35968.457
	34086.984
	35986.928
	34083.800
	35986.683
	34070.043
	35985.386

to the point of commencement.

The boundaries of “EUNOS FLYOVER SUBSTATION” are more particularly delineated in the Survey Plan set out below.

THE SCHEDULE — *continued**First column**Second column*

The Authority

Protected Place

8. Chief
Executive
Officer,
SP PowerGrid
Ltd

EUNOS SUBSTATION

All that area comprised in part of Lot 06423W in Mukim No. 23 occupied by “EUNOS SUBSTATION” containing an area of about 8877.3 square metres and bounded approximately as follows:

Commencing at a point 33492.978 metres North and 35447.346 metres East of the Singapore Land Authority SVY 21 Datum, the boundaries run along successive lines of coordinates approximately as follows:

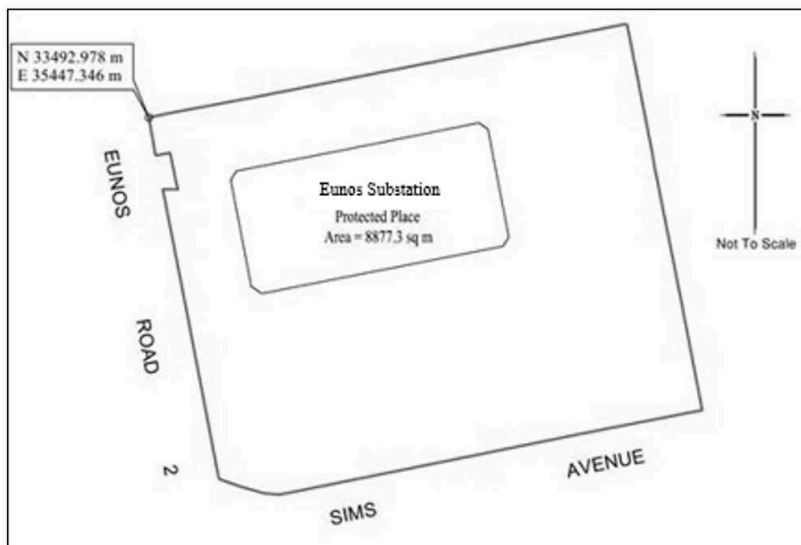
<i>Northing</i>	<i>Easting</i>
33492.978	35447.346
33494.013	35452.350
33497.401	35470.523
33512.942	35550.048

 THE SCHEDULE — *continued*

<i>First column</i>	<i>Second column</i>
The Authority	Protected Place
33513.006	35550.866
33508.557	35551.760
33486.004	35556.191
33482.524	35556.815
33455.388	35562.222
33430.079	35567.154
33424.974	35540.591
33423.898	35535.326
33418.455	35508.313
33411.934	35475.561
33412.231	35472.381
33413.618	35467.334
33415.311	35462.548
33451.332	35455.584
33477.558	35450.389
33477.524	35453.723
33477.819	35453.656
33478.380	35453.413
33484.750	35452.102
33485.226	35452.031
33485.394	35451.904
33484.762	35448.862

to the point of commencement.

The boundaries of “EUNOS SUBSTATION” are more particularly delineated in the Survey Plan set out below.

THE SCHEDULE — *continued**First column**Second column*

The Authority

Protected Place

9. Chief
Executive
Officer,
SP PowerGrid
Ltd

FLORA DRIVE SUBSTATION

All that area comprised in part of Lot 04641W in Mukim No. 31 occupied by “FLORA DRIVE SUBSTATION” containing an area of about 1740.4 square metres and bounded approximately as follows:

Commencing at a point 37542.923 metres North and 42741.157 metres East of the Singapore Land Authority SVY 21 Datum, the boundaries run along successive lines of coordinates approximately as follows:

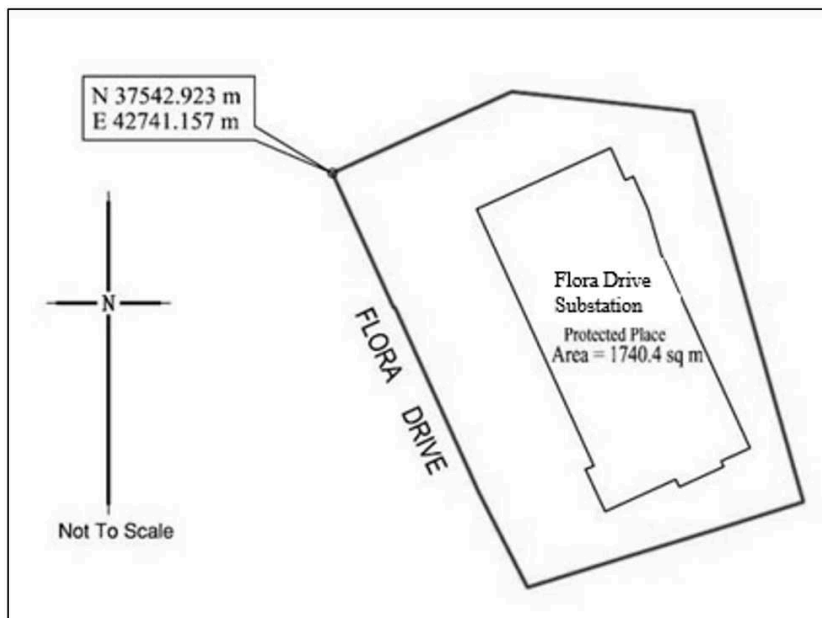
<i>Northing</i>	<i>Easting</i>
37542.923	42741.157
37540.098	42742.447
37534.666	42744.914
37528.397	42747.768
37528.451	42747.894
37528.340	42747.945

 THE SCHEDULE — *continued*

<i>First column</i>	<i>Second column</i>
The Authority	Protected Place
37519.632	42751.914
37508.371	42757.002
37498.191	42762.225
37501.522	42773.059
37504.446	42782.574
37507.404	42792.012
37520.885	42788.202
37535.249	42784.173
37549.560	42780.081
37550.368	42772.912
37551.702	42760.543
37547.187	42750.496
37543.017	42741.363

to the point of commencement.

The boundaries of “FLORA DRIVE SUBSTATION” are more particularly delineated in the Survey Plan set out below.

THE SCHEDULE — *continued**First column**Second column*

The Authority

Protected Place

10. Chief
Executive
Officer,
SP PowerGrid
Ltd

GEORGE STREET SUBSTATION

All that area comprised in part of Lots 00199W and 00611C in Town Subdivision No. 4 occupied by "GEORGE STREET SUBSTATION" containing an area of about 853.1 square metres and bounded approximately as follows:

Commencing at a point 29801.609 metres North and 29664.100 metres East of the Singapore Land Authority SVY 21 Datum, the boundaries run along successive lines of coordinates approximately as follows:

<i>Northing</i>	<i>Easting</i>
29801.609	29664.100
29809.708	29668.052
29808.676	29670.173
29809.430	29670.536
29810.292	29670.219

 THE SCHEDULE — *continued*

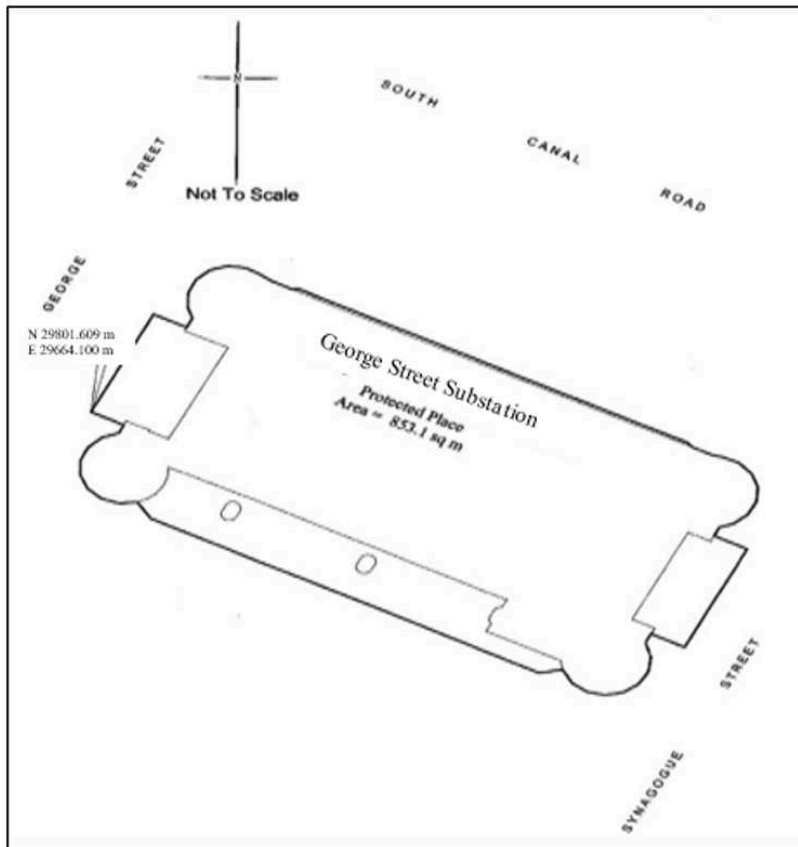
<i>First column</i>		<i>Second column</i>
The Authority		Protected Place
	29811.483	29670.241
	29812.562	29670.744
	29813.344	29671.643
	29813.693	29672.782
	29813.549	29673.965
	29813.042	29674.871
	29812.554	29675.546
	29811.890	29676.899
	29811.935	29677.320
	29799.646	29702.348
	29799.267	29702.677
	29798.625	29703.990
	29798.456	29704.626
	29798.012	29705.697
	29797.155	29706.525
	29796.038	29706.939
	29794.849	29706.867
	29793.789	29706.322
	29793.038	29705.397
	29792.751	29704.504
	29792.041	29704.170
	29790.972	29706.318
	29782.902	29702.362
	29783.967	29700.214
	29783.254	29699.859
	29782.066	29700.217
	29780.884	29700.072

 THE SCHEDULE — *continued*

<i>First column</i>		<i>Second column</i>
The Authority		Protected Place
	29779.860	29699.462
	29779.170	29698.492
	29778.929	29697.325
	29779.180	29696.160
	29779.879	29695.195
	29780.976	29694.563
	29780.696	29693.055
	29792.955	29668.026
	29794.266	29667.155
	29794.154	29665.964
	29794.531	29664.834
	29795.333	29663.952
	29796.422	29663.470
	29797.614	29663.469
	29798.704	29663.949
	29799.507	29664.829
	29799.878	29665.904
	29800.576	29666.222

to the point of commencement.

The boundaries of “GEORGE STREET SUBSTATION” are more particularly delineated in the Survey Plan set out below.

THE SCHEDULE — *continued*

Made on 22 January 2024.

PANG KIN KEONG
*Permanent Secretary,
Ministry of Home Affairs,
Singapore.*

[SPF/CPS/C/09/02/03; AG/LEGIS/SL/137B/2020/2 Vol. 15]