
First published in the *Government Gazette*, Electronic Edition, on 16th December 2016 at 5:00 pm.

No. S 643

PROTECTED AREAS AND PROTECTED PLACES ACT (CHAPTER 256)

PROTECTED PLACES (NO. 5) ORDER 2016

ARRANGEMENT OF PARAGRAPHS

Paragraph

1. Citation and commencement
 2. Premises declared to be protected place
- The Schedule
-

In exercise of the powers conferred by section 5(1) of the Protected Areas and Protected Places Act, the Minister for Home Affairs makes the following Order:

Citation and commencement

1. This Order is the Protected Places (No. 5) Order 2016 and comes into operation on 16 December 2016.

Premises declared to be protected place

2.—(1) The premises described in the second column of the Schedule are declared to be a protected place for the purposes of the Act.

(2) No person may enter or remain in those premises unless the person —

- (a) is in possession of a pass-card or permit issued by the authority specified in the first column of the Schedule; or
- (b) has the permission of an authorised officer on duty at those premises to enter those premises.

THE SCHEDULE

First column
 The Authority
 Commissioner of Police

Second column
 Protected Place
 PUBLIC TRANSPORT SECURITY
 COMMAND HEADQUARTERS

All that area comprised in Lot 06919N in Mukim No. 23, occupied by “PUBLIC TRANSPORT SECURITY COMMAND HEADQUARTERS” containing an area of about 9,217.2 square metres and bounded approximately as follows:

Commencing at a point 34225.83 metres North and 34392.16 metres East of the Singapore Land Authority SVY 21 Datum, the boundaries run along successive lines of coordinates approximately as follows:

<i>Northing</i>	<i>Easting</i>
34225.83	34392.16
34227.05	34391.89
34225.96	34386.94
34231.93	34377.47
34237.92	34376.09
34237.66	34374.90
34245.37	34374.54
34245.46	34374.95
34271.72	34369.28
34274.34	34369.03
34277.21	34368.98
34279.76	34369.19
34283.26	34369.70
34285.32	34370.14
34288.38	34371.06
34290.91	34372.15

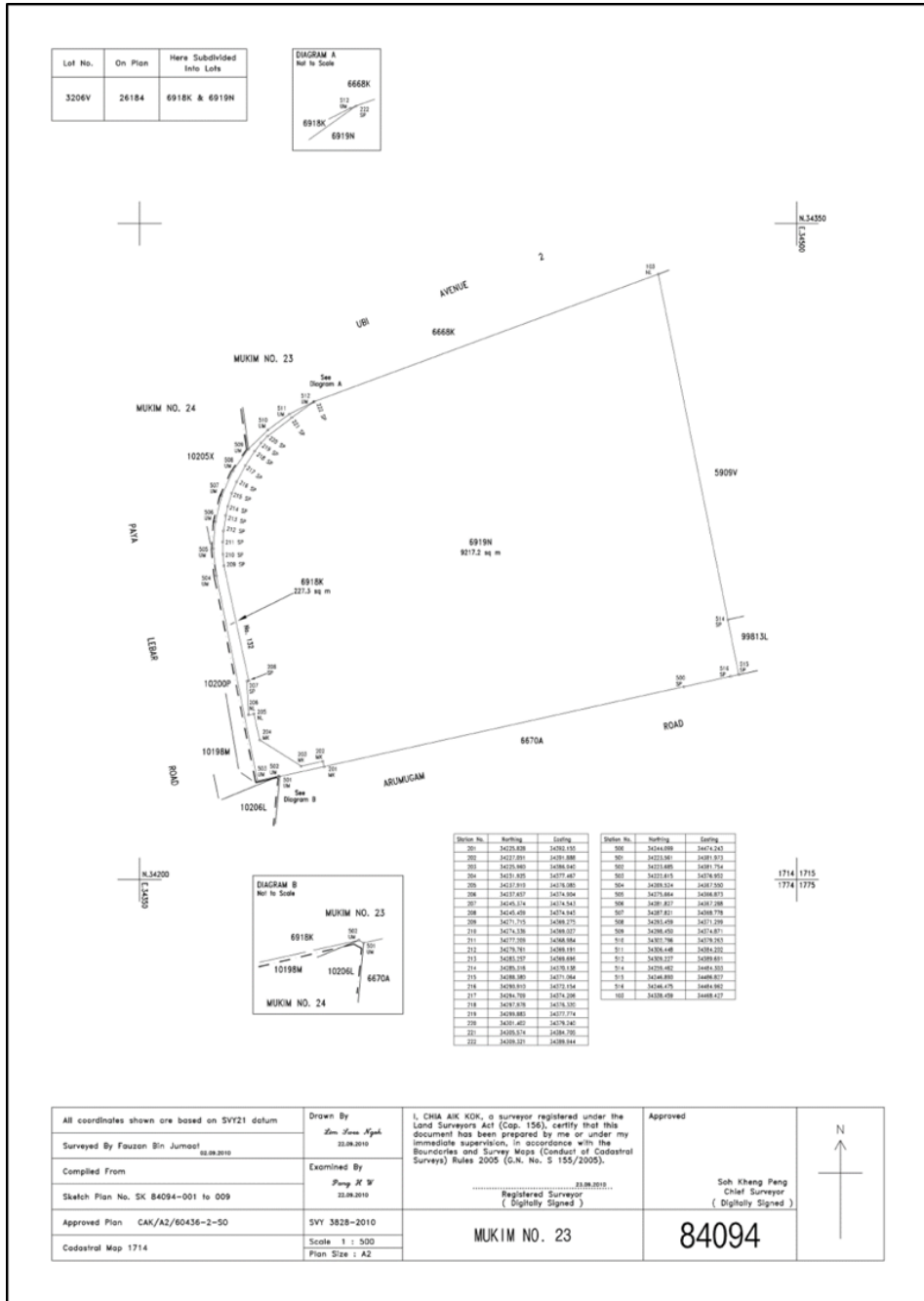
 THE SCHEDULE — *continued*

<i>First column</i>	<i>Second column</i>	
The Authority	Protected Place	
	34294.71	34374.21
	34297.98	34376.32
	34299.88	34377.77
	34301.40	34379.24
	34305.57	34384.71
	34309.32	34389.94
	34338.46	34468.43
	34259.46	34484.30
	34246.89	34486.83
	34246.48	34484.96
	34244.10	34474.24

to the point of commencement.

The boundaries of “PUBLIC TRANSPORT SECURITY COMMAND HEADQUARTERS” are more particularly delineated in the Survey Plan No. SK 84094-001 to 009 set out below.

THE SCHEDULE — *continued*



Made on 12 December 2016.

LEO YIP
*Permanent Secretary,
Ministry of Home Affairs,
Singapore.*

[MHA (PS) 12 / 2 / 07 TF 8; AG/LEGIS/SL/256/2015/1 Vol. 4]