

---

---

First published in the *Government Gazette*, Electronic Edition, on 11 October 2024 at 5 pm.

## No. S 791

### INFRASTRUCTURE PROTECTION ACT 2017

#### INFRASTRUCTURE PROTECTION (PROTECTED PLACES) (NO. 21) ORDER 2024

##### ARRANGEMENT OF PARAGRAPHS

###### Paragraph

1. Citation and commencement
  2. Premises declared to be protected place
  3. Revocation
- The Schedule
- 

In exercise of the powers conferred by sections 14(1) and 19(1) of the Infrastructure Protection Act 2017, the Minister for Home Affairs makes the following Order:

#### **Citation and commencement**

1. This Order is the Infrastructure Protection (Protected Places) (No. 21) Order 2024 and comes into operation on 11 October 2024.

#### **Premises declared to be protected place**

2. The premises described in the second column of the Schedule are declared to be a protected place for the purposes of the Act, and the person specified in the first column of that Schedule is designated as the authority of the protected place.

#### **Revocation**

3. In the Protected Places (Consolidation) Order (O 4), in the Schedule, delete item (17).

---



---

THE SCHEDULE

Paragraph 2

<i>First column</i>			<i>Second column</i>
The Authority			Protected Place
President Executive, Pte. Ltd.	and Toppan	Chief Next	TOPPAN NEXT PTE. LTD. AND TOPPAN NEXT TECH PTE. LTD., 97 UBI AVENUE 4, SINGAPORE 408754

All that area comprised in Lot 04405T in Mukim No. 23 occupied by “TOPPAN Next Pte. Ltd. and TOPPAN Next Tech Pte. Ltd.” containing an area of approximately 5,501.7 square metres and bounded approximately as follows:

Commencing at the southernmost corner of the perimeter fence of “TOPPAN Next Pte. Ltd.” and “TOPPAN Next Tech Pte. Ltd.” at a point 35,149.244 metres North and 34,761.004 metres East of the Survey Department origin of coordinates, the boundaries run along a fence on a bearing of 66° 44' 44" for a distance of 43.784 metres (partly across the main gate) and then along successive lines of fences of bearings and distances approximately as follows:

<i>Bearing</i>	<i>Distance in metres</i>
25° 12' 30"	8.712
338° 05' 30"	28.701
336° 34' 20"	11.921
333° 32' 00"	11.921
330° 30' 20"	11.923
327° 28' 00"	11.922
325° 56' 20"	26.724
317° 37' 10"	3.946
292° 34' 50"	3.991
270° 13' 50"	3.988
246° 19' 40"	3.987

THE SCHEDULE — *continued*

*First column*

*Second column*

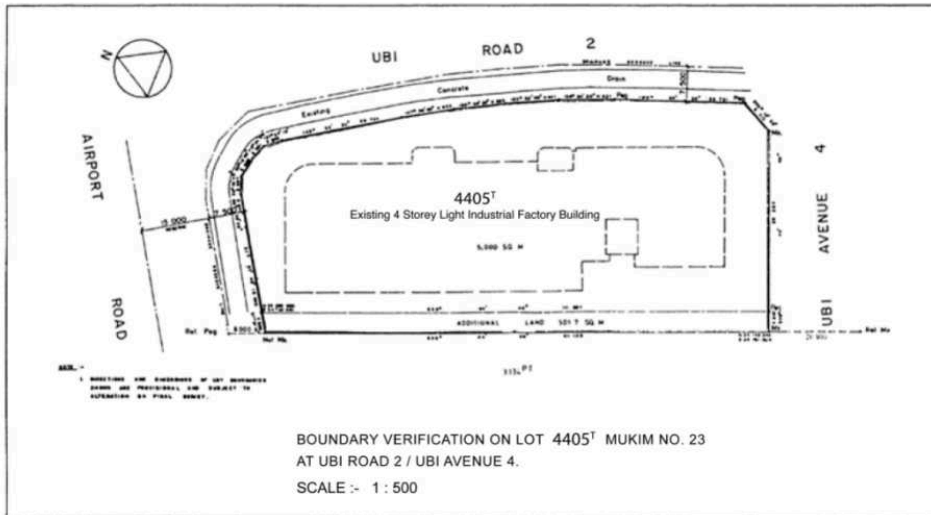
The Authority

Protected Place

236° 43' 20"	6.841
237° 07' 40"	19.366
237° 51' 14"	4.555
156° 44' 40"	111.125

to the point of commencement.

The boundaries of “TOPPAN Next Pte. Ltd. and TOPPAN Next Tech Pte. Ltd.” are more particularly delineated in the Plan set out below.



Made on 3 October 2024.

PANG KIN KEONG  
*Permanent Secretary,  
Ministry of Home Affairs,  
Singapore.*

[SPF/CPS/C/09/06/02; AG/LEGIS/SL/137B/2020/2]