
First published in the *Government Gazette*, Electronic Edition, on 14 October 2024 at 5 pm.

No. S 796

INFRASTRUCTURE PROTECTION ACT 2017

INFRASTRUCTURE PROTECTION (PROTECTED PLACES) (NO. 22) ORDER 2024

ARRANGEMENT OF PARAGRAPHS

Paragraph

1. Citation and commencement
 2. Premises declared to be protected place
- The Schedule
-

In exercise of the powers conferred by section 14(1) of the Infrastructure Protection Act 2017, the Minister for Home Affairs makes the following Order:

Citation and commencement

1. This Order is the Infrastructure Protection (Protected Places) (No. 22) Order 2024 and comes into operation on 15 October 2024.

Premises declared to be protected place

2. The premises described in the second column of the Schedule are declared to be a protected place for the purposes of the Act, and the person specified in the first column of that Schedule is designated as the authority of the protected place.

THE SCHEDULE

Paragraph 2

<i>First column</i>	<i>Second column</i>
The Authority	Protected Place
Executive Director, A*STAR Infectious Diseases Labs	A*STAR HIGH CONTAINMENT (BIOSAFETY LEVEL 3) FACILITY, BASEMENT 1 #B1-07, BIOPOLIS MATRIX BUILDING, 30 BIOPOLIS STREET, SINGAPORE 138671

All that area comprised in part of Lots 04932W and 04929W in Mukim No. 3 occupied by “A*STAR HIGH CONTAINMENT (BIOSAFETY LEVEL 3) FACILITY, BASEMENT 1 #B1-07, BIOPOLIS MATRIX BUILDING, 30 BIOPOLIS STREET, SINGAPORE 138671” containing an area of about 1,284.9 square metres and bounded approximately as follows:

Commencing at the north-easternmost corner of the “A*STAR HIGH CONTAINMENT (BIOSAFETY LEVEL 3) FACILITY, BASEMENT 1 #B1-07, BIOPOLIS MATRIX BUILDING, 30 BIOPOLIS STREET, SINGAPORE 138671” at a point 31,764.527 metres North and 23,497.925 metres East of the Singapore Land Authority SVY 21 Datum, the boundaries run along successive lines of coordinates approximately as follows:

<i>Northing</i>	<i>Easting</i>
31,764.527	23,497.925
31,756.014	23,497.892
31,745.417	23,497.906
31,745.452	23,486.197
31,745.453	23,482.181
31,745.411	23,479.094
31,734.276	23,479.134
31,734.280	23,477.525
31,721.416	23,477.555
31,721.416	23,470.301

 THE SCHEDULE — *continued*

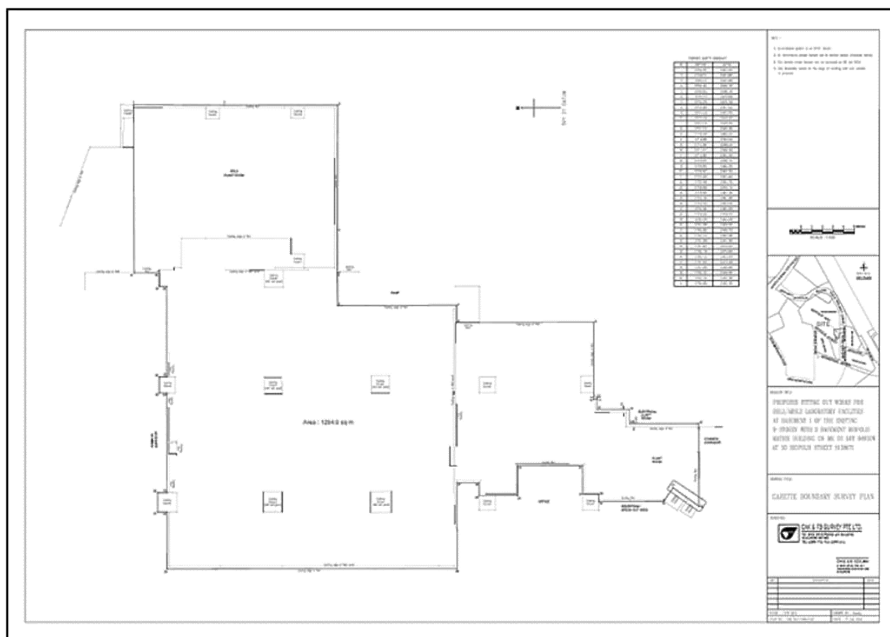
<i>First column</i>	<i>Second column</i>
The Authority	Protected Place
31,721.116	23,470.301
31,721.116	23,469.366
31,718.079	23,469.373
31,718.088	23,468.045
31,711.594	23,468.041
31,711.577	23,460.309
31,713.990	23,462.042
31,714.874	23,460.774
31,720.952	23,460.753
31,720.957	23,461.452
31,722.456	23,461.444
31,722.468	23,464.132
31,728.568	23,464.119
31,728.569	23,461.308
31,732.156	23,461.282
31,732.162	23,462.538
31,734.244	23,462.528
31,734.226	23,454.479
31,761.379	23,454.438
31,761.389	23,459.767
31,762.282	23,459.772
31,762.275	23,461.596
31,761.389	23,461.583
31,761.407	23,470.923
31,762.118	23,470.926
31,762.122	23,472.433
31,761.416	23,472.429

THE SCHEDULE — *continued*

<i>First column</i>	<i>Second column</i>
The Authority	Protected Place
31,761.430	23,480.898
31,762.122	23,480.905
31,762.124	23,482.168
31,764.496	23,482.163

to the point of commencement.

The boundaries of “A*STAR HIGH CONTAINMENT (BIOSAFETY LEVEL 3) FACILITY, BASEMENT 1 #B1-07, BIOPOLIS MATRIX BUILDING, 30 BIOPOLIS STREET, SINGAPORE 138671” are more particularly delineated in the Survey Plan No. CAK/24/11390/GAZ set out below.



Made on 3 October 2024.

PANG KIN KEONG
*Permanent Secretary,
Ministry of Home Affairs,
Singapore.*

[SPF/CPS/C/09/07/07; AG/LEGIS/SL/137B/2020/2]