

**PROTECTED AREAS AND PROTECTED PLACES ACT
(CHAPTER 256, SECTION 5(1))**

PROTECTED PLACES (CONSOLIDATION) ORDER

ARRANGEMENT OF PARAGRAPHS

Paragraph

1. Citation
 2. Protected places, permits and authorised officers
The Schedule
-

Citation

1. This Order may be cited as the Protected Places (Consolidation) Order.

Protected places, permits and authorised officers

2. The premises described in the second column of the Schedule are declared to be protected places for the purposes of the Protected Areas and Protected Places Act, and no person shall be in those premises unless he is in possession of a pass-card or permit issued by the authority specified in the first column of the Schedule or has received the permission of an authorised officer on duty at the premises to enter the premises.

THE SCHEDULE

<i>First column</i>	<i>Second column</i>
The Authority	Protected Place
(1) S 319/91 [26.7.91] The Director, Electricity Department, Public Utilities Board.	

(1) Deleted by S 124/2008, wef 14/03/2008.

(2) PUBLIC UTILITIES BOARD 230 KV
SUBSTATION AT UPPER JURONG
ROAD.

THE SCHEDULE — *continued*

First column

Second column

The Authority

Protected Place

All that area comprised wholly on part of Lot 2271 MK No. 16 occupied by “PUB 230 kv Substation” containing an area of about 15,624.4 square metres and bounded approximately as follows:

Commencing at a point on the south-eastern corner of the perimeter fence of the aforesaid “PUB 230 kv Substation” which point is 34,475.152 metres North and 11,468.205 metres East of the Survey Department origin of co-ordinates, the boundaries run along successive lines of fences of bearings and distances as under:

<i>Bearing</i>	<i>Distance in metres</i>
270° 07'	88.6 (along fence)
347° 42'	4.7 (along fence)
331° 34'	8.9
0° 00'	154.6
90° 25'	1.7
157° 08'	5.0
168° 47'	2.6
178° 00'	5.2
88° 48'	1.0 (at pillar of gate)
89° 33'	7.2 (along pillars of gate)
89° 54'	1.2 (along pillars of side gate)
90° 18'	1.0 (along fence)
2° 25'	7.8
16° 35'	2.7
25° 32'	2.8
87° 50'	56.4

THE SCHEDULE — *continued*

<i>First column</i>	<i>Second column</i>
The Authority	Protected Place
150° 13'	3.8
90° 58'	1.3 (at pillar of side gate)
90° 45'	1.1
91° 03'	7.2 (along pillars of main gate)
91° 06'	1.0 (along fence)
19° 00'	4.2
87° 46'	6.6
180° 02'	170.8

to the point of Commencement.

(3) *Deleted by S 124/2008, wef 14/03/2008.*

(4) PUBLIC UTILITIES BOARD 230 KV
SUBSTATION AT WEST ADMIRALTY
ROAD.

All that area comprised partly in Lot 1680 and partly in Lot 1681Pt MK No. 13 occupied by “PUB 230/66 KV Substation” containing an area of 6,968.2 square metres and bounded approximately as follows:

Commencing at a point on the south-western corner of the perimeter fence of the aforesaid “PUB Substation” which point is 49,254.244 metres North and 25,466.347 metres East of the Survey Department of origin of co-ordinates, the boundaries run along successive lines of fences of bearings and distances as under:

<i>Bearing</i>	<i>Distance in metres</i>
333° 54'	10.1 (along fence fronting Sembawang)
52° 32'	0.4
334° 00'	32.1

THE SCHEDULE — *continued*

<i>First column</i>	<i>Second column</i>
The Authority	Protected Place
333° 31'	12.6
330° 01'	16.1
48° 34'	0.5
329° 41'	18.5
329° 33'	3.3
37° 14'	17.7
64° 13'	26.8 (along fence fronting Admiralty Road West)
154° 22'	7.4
62° 56'	0.9
63° 57'	10.2 (along a gate)
66° 57'	0.6 (along a fence)
335° 08'	7.4
64° 04'	18.1
154° 22'	41.8
154° 27'	25.0
154° 17'	22.5
63° 35'	0.5
155° 14'	12.0
244° 27'	44.4
244° 38'	25.6

to the point of commencement.

The boundaries of the Public Utilities Board 230 KV Substations at Pasir Panjang Road, Upper Jurong Road, Ubi Avenue 3 and West Admiralty Road are delineated in the Plans set out hereunder.

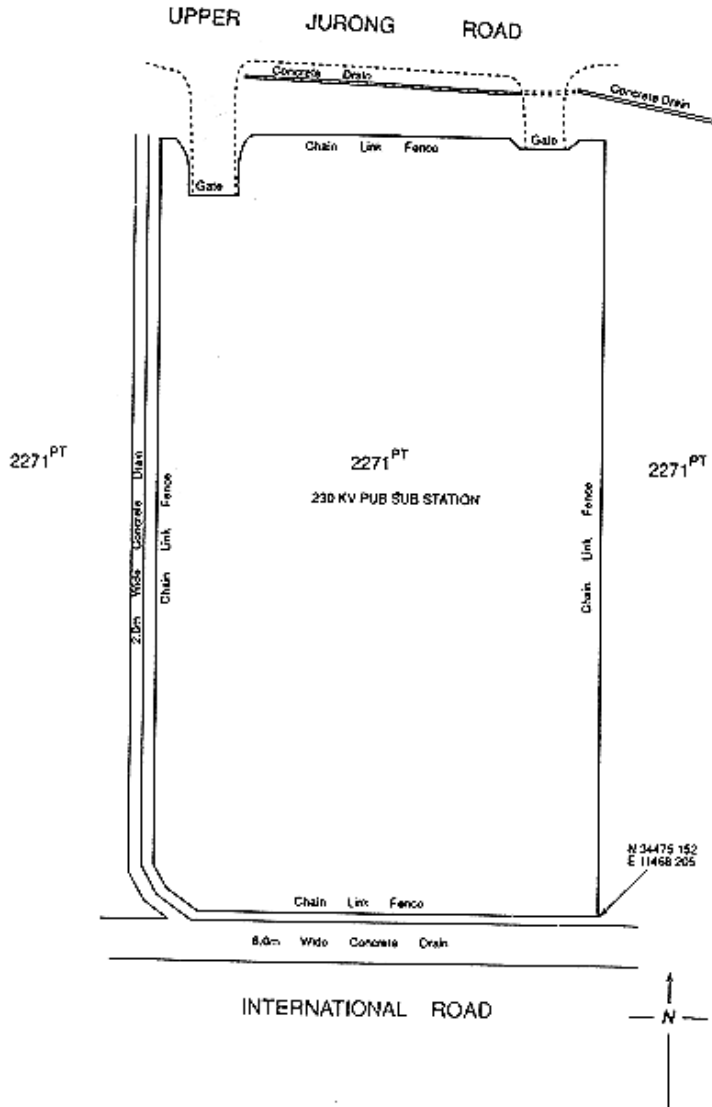
(1) *Form 1 — Deleted by S 124/2008, wef 14/03/2008.*

(2) Public Utilities Board 230 KV Substation at Upper Jurong Road

THE SCHEDULE — continued

First column
The Authority

Second column
Protected Place



(3) Form 3 — Deleted by S 124/2008, wef 14/03/2008.

(4) Public Utilities Board 230 KV Substation at West Admiralty Road

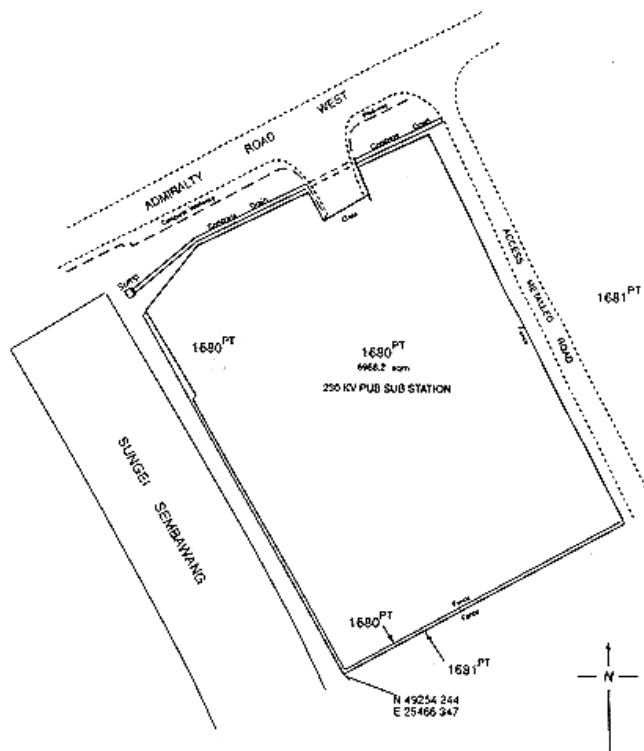
THE SCHEDULE — *continued*

First column

Second column

The Authority

Protected Place



First column

Second column

The Authority

Protected Place

- (2) S 330/91 [2.8.91] SINGAPORE SHIPBUILDING & General Manager, ENGINEERING LIMITED PREMISES, NO. Singapore Shipbuilding 16 BENOI ROAD SINGAPORE 2262. & Engineering Limited.

All that area comprised wholly in Lot 203 MK No. 7 (TUAS) occupied by the "SINGAPORE SHIPBUILDING & ENGINEERING LIMITED" containing an area of about 20,224.2 square metres and bounded approximately as follows:

THE SCHEDULE — *continued*

<i>First column</i>	<i>Second column</i>
The Authority	Protected Place

Commencing at the southern-most corner of the perimeter fence of the aforesaid “SINGAPORE SHIPBUILDING & ENGINEERING LIMITED” which point is 31,480.060 metres North and 10,772.082 metres East of the Survey Department origin of co-ordinates, the boundaries run along successive lines of fences of bearings and distances as under:

<i>Bearing</i>	<i>Distance in metres</i>
315° 17'	76.6 (along bottom of slope)
315° 15'	87.4 (along bottom of slope)
82° 52'	36.2
49° 12'	0.1
82° 54'	60.8
82° 46'	51.9
82° 44'	53.5
172° 35'	5.3
262° 56'	4.8 (along concrete access)
187° 24'	0.2
173° 03'	2.6 (at bin centre)
157° 52'	0.3
83° 31'	4.4
172° 22'	4.9 (along a wall)
173° 00'	8.0 (across an access road)
172° 53'	4.9 (along a wall)
84° 32'	0.3

THE SCHEDULE — *continued*

<i>First column</i>	<i>Second column</i>
The Authority	Protected Place
172° 48'	55.1
265° 47'	0.3
172° 33'	6.1 (partly along a wall)
172° 33'	7.7 (across an access)
172° 46'	6.2 (partly along a wall)
88° 38'	0.3
172° 52'	13.8 (along bottom of slope)
177° 12'	3.6 (along bottom of slope)
219° 29'	16.2 (along bottom of slope)
258° 39'	3.6
262° 52'	45.4
262° 41'	41.5

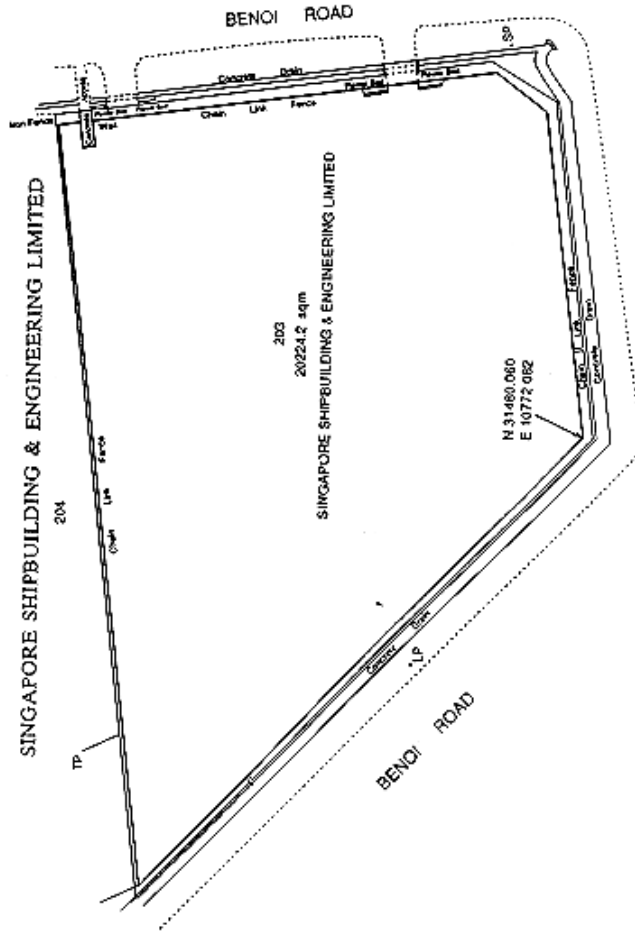
to the point of commencement.

The boundaries of “SINGAPORE SHIP-BUILDING & ENGINEERING LIMITED” are delineated in the Plan set out hereunder.

THE SCHEDULE — *continued*

First column
The Authority

Second column
Protected Place



First column
The Authority

Second column
Protected Place

- (3) S 345/91 (1) [8.8.91] (1) PUBLIC UTILITIES BOARD 230/66/22KV
The Director, SUBSTATION AT KALLANG BASIN.
Electricity
Department.

THE SCHEDULE — *continued**First column*

The Authority

Second column

Protected Place

All that area comprised wholly in Lots 6541,5241 and 6535 MK No. 24 occupied by “PUB 230/66/22KV substation” containing an area of 17,417.2 square metres and bounded approximately as follows:

Commencing at the southern-west point of the perimeter fence of the aforesaid “PUB substation” which point is 33,514.518 metres North and 32,160.033 metres East of the Survey Department of origin of co-ordinates, the boundaries run along successive lines of fences of bearings and distances as under:

<i>Bearing</i>	<i>Distance in metres</i>
275° 14'	37.6 (along fence beside a concrete drain)
327° 10'	8.5
310° 30'	4.9
327° 14'	26.1
328° 50'	38.0
14° 51'	7.3 (along fence)
57° 49'	28.9 (along fence fronting Kallang Bahru)
54° 32'	0.2
58° 11'	20.3
58° 19'	1.2 (along a side gate)
58° 12'	9.5 (to another side gate)
59° 55'	1.2 (along a side gate)
57° 38'	18.2 (along fence)
59° 32'	2.8
82° 25'	2.8
32° 16'	0.1

THE SCHEDULE — *continued*

<i>First column</i>	<i>Second column</i>
The Authority	Protected Place
58° 08'	3.4 (along a gate)
97° 30'	0.1
57° 16'	14.2 (along a fence)
7° 06'	0.1
55° 01'	2.1
58° 05'	5.3 (along a gate)
58° 24'	46.8
110° 12'	11.4
148° 15'	30.7 (along fence fronting Geylang Bahru)
148° 30'	36.0
149° 46'	5.6
151° 23'	6.1
152° 54'	18.0 (across a concrete drain)
238° 02'	58.7
238° 15'	19.4
237° 04'	2.5
238° 26'	44.0
239° 28'	7.8
238° 51'	0.2
255° 59'	2.9 (across a concrete drain)

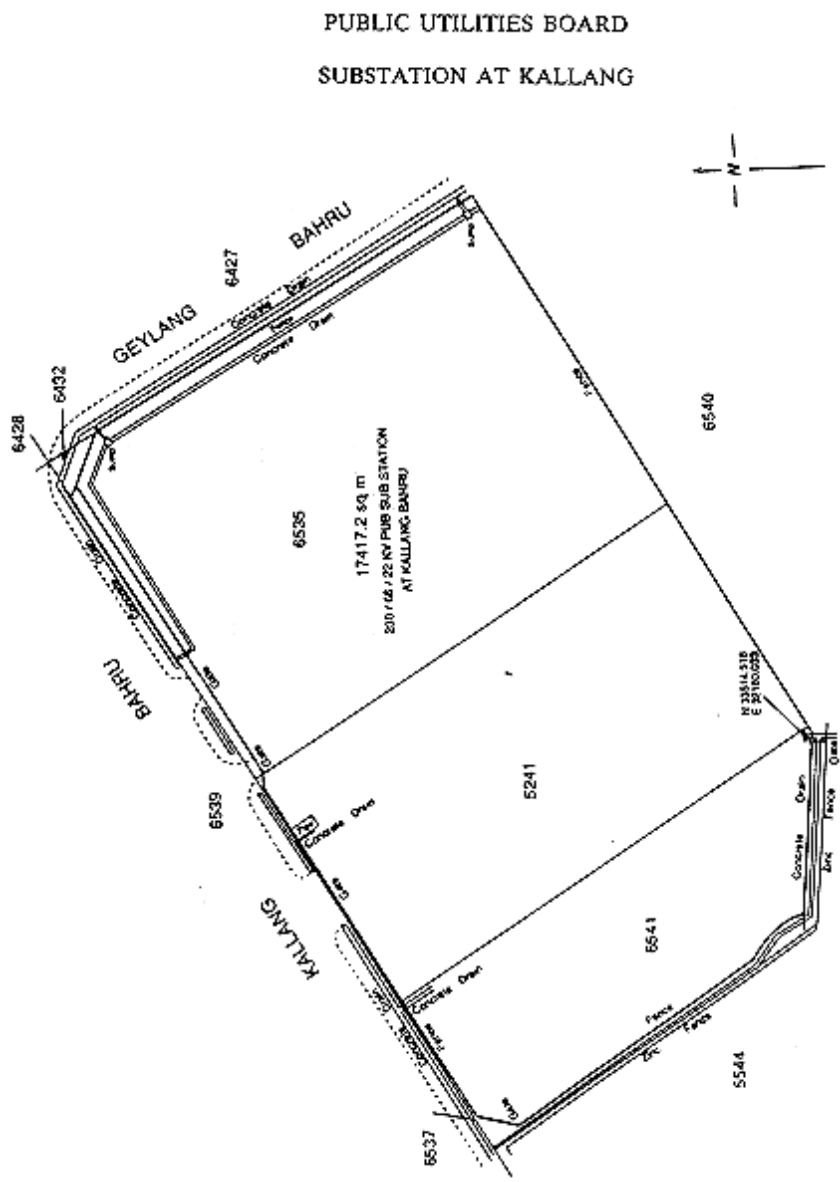
to the point of commencement.

The boundaries of the “PUB 230/66/22KV substation” are more particularly delineated in the Plan set out hereunder.

THE SCHEDULE — *continued*

First column
The Authority

Second column
Protected Place



The Director, Electricity Department.

(2) PUBLIC UTILITIES BOARD 230/66/22KV SUBSTATION AT AYER RAJAH CRESCENT.

THE SCHEDULE — *continued*

First column
The Authority

Second column
Protected Place

All that area comprised wholly in Lot 1711 MK No. 3 occupied by “PUB 230/66/22KV substation” containing an area of 13,518.6 square metres and bounded approximately as follows:

Commencing at the south-easterly corner of the perimeter fence of the aforesaid “PUB substation” which point is 30,997.930 metres North and 23,042.284 metres East of the Survey Department of origin of co-ordinates, the boundaries run along successive lines of fences of bearings and distances as under:

<i>Bearing</i>	<i>Distance in metres</i>
292° 17'	2.7 (along fence)
293° 40'	0.8 (concrete gate pillar)
20° 31'	0.6
292° 47'	5.9 (along gate)
204° 24'	0.6 (concrete gate pillar)
293° 32'	0.8
305° 21'	5.8 (along fence)
303° 26'	32.5
292° 53'	64.8
342° 04'	2.9
339° 53'	9.8
22° 25'	15.5
22° 55'	1.3 (along small gate)
22° 36'	9.2 (along big gate)
22° 25'	1.2 (along small gate)
23° 28'	0.2 (across concrete gate pillar)
292° 52'	0.1 (along brick wall)

THE SCHEDULE — *continued*

<i>First column</i>	<i>Second column</i>
The Authority	Protected Place
22° 52'	23.0 (along outer face of brick wall fronting Ayer Rajah Crescent)
112° 38'	4.3
21° 23'	0.9
22° 28'	7.3 (along big gate)
22° 12'	0.8 (across concrete gate pillar)
22° 32'	1.0 (along small gate)
292° 41'	4.4 (along outer face of brick wall)
23° 01'	0.4
74° 10'	0.1 (along fence)
22° 55'	31.5
68° 33'	13.0

to the point of commencement.

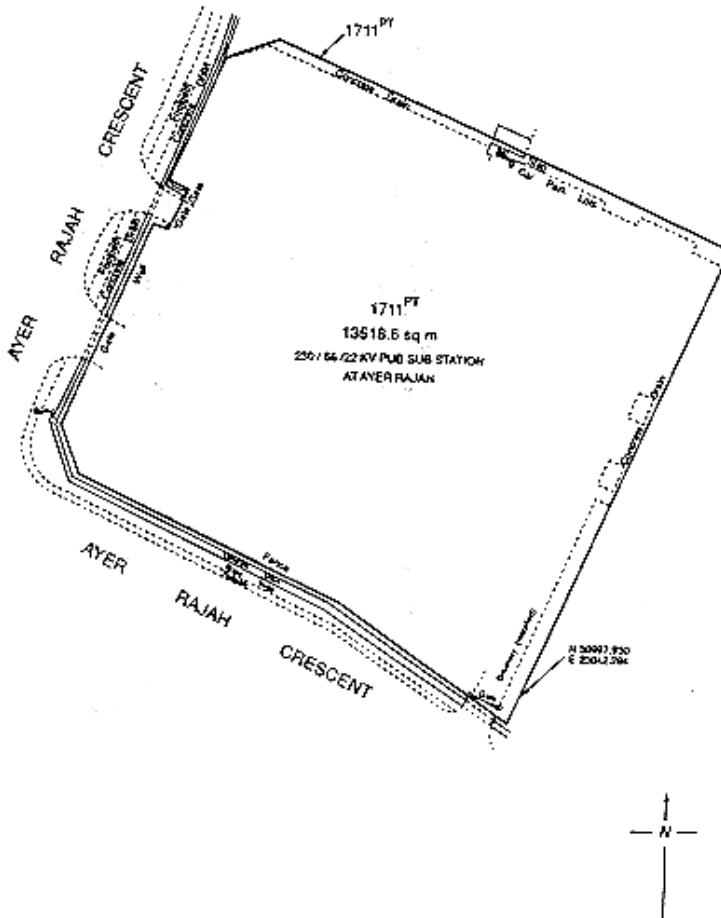
The boundaries of the “PUB 230/66/22KV substation” are more particularly delineated in the Plan set out hereunder.

THE SCHEDULE — *continued*

First column
The Authority

Second column
Protected Place

PUBLIC UTILITIES BOARD
SUBSTATION AT AYER RAJAH CRESCENT



The Director, Electricity Department. (3) PUBLIC UTILITIES BOARD 230/66/22KV SUBSTATION AT TAMPINES ROAD.

All that area comprised wholly in Lot 999 MK No. 29 occupied by “PUB 230/66/22KV substation” containing an area of 14,828.7 square metres and bounded approximately as follows:

THE SCHEDULE — *continued**First column**Second column*

The Authority

Protected Place

Commencing at the south-easterly corner of the perimeter fence of the aforesaid “PUB substation” which point is 39,107.490 metres North and 39,971.614 metres East of the Survey Department of origin of co-ordinates, the boundaries run along successive lines of fences of bearings and distances as under:

<i>Bearing</i>	<i>Distance in metres</i>
278° 01'	32.3 (along fence)
278° 11'	26.9
278° 06'	33.0
278° 11'	26.8
278° 10'	36.1
8° 06'	32.8
8° 07'	24.0
8° 12'	36.2
87° 48'	7.1 (along fence fronting Tampines Road)
185° 09'	1.0
186° 17'	3.8 (along a gate)
97° 33'	13.0 (along fence)
98° 20'	1.2
98° 34'	3.8
98° 03'	7.8 (along a gate)
95° 44'	1.1
7° 18'	9.7
87° 35'	11.6
89° 25'	30.5
101° 19'	29.1

THE SCHEDULE — *continued*

<i>First column</i>	<i>Second column</i>
The Authority	Protected Place
111° 57'	6.3
125° 17'	9.3
140° 18'	33.0
157° 26'	6.1
146° 00'	12.8
188° 05'	32.1
188° 09'	29.8

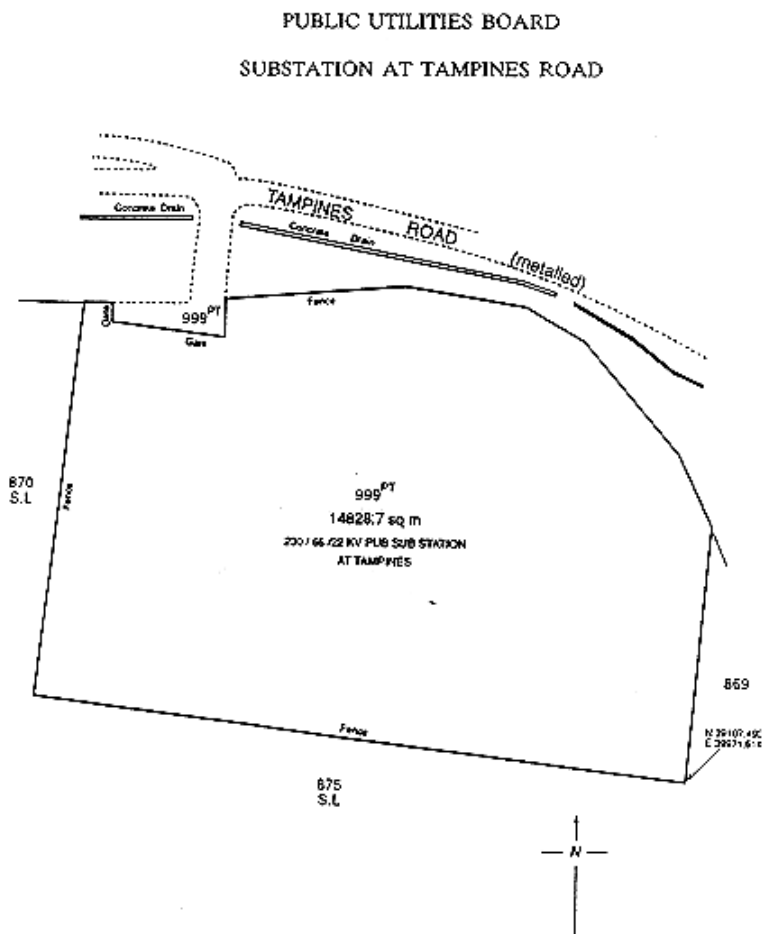
to the point of commencement.

The boundaries of the “PUB 230/66/22KV substation” are more particularly delineated in the Plan set out hereunder:

THE SCHEDULE — continued

First column
The Authority

Second column
Protected Place



The Director, Electricity Department. (4) PUBLIC UTILITIES BOARD 230/66/22KV SUBSTATION AT CHOA CHU KANG ROAD.

All that area comprised wholly in Lot 1529 MK No. 10 occupied by "PUB 230/66/22KV substation" containing an area of 8,313.9 square metres and bounded approximately as follows:

Commencing at the south-westerly corner of the perimeter fence of the aforesaid "PUB substation"

THE SCHEDULE — *continued*

<i>First column</i>	<i>Second column</i>
The Authority	Protected Place
	which point is 39,750.911 metres North and 19,303.460 metres East of the Survey Department of origin of co-ordinates, the boundaries run along successive lines of fences of bearings and distances as under:
<i>Bearing</i>	<i>Distance in metres</i>
1° 42'	33.9 (along fence)
1° 44'	34.7
1° 57'	33.2
80° 01'	10.3 (along fence fronting Choa Chu Kang Road)
73° 22'	13.0
68° 05'	15.8
183° 44'	5.3
91° 01'	0.6
91° 30'	11.5 (along a gate)
92° 12'	2.0 (along a fence)
1° 43'	8.8
66° 42'	15.9
67° 12'	11.3
181° 25'	23.0
181° 57'	32.8
181° 58'	27.7
182° 33'	42.1
271° 12'	33.8
271° 28'	23.0
252° 43'	9.7
271° 25'	9.0

THE SCHEDULE — continued

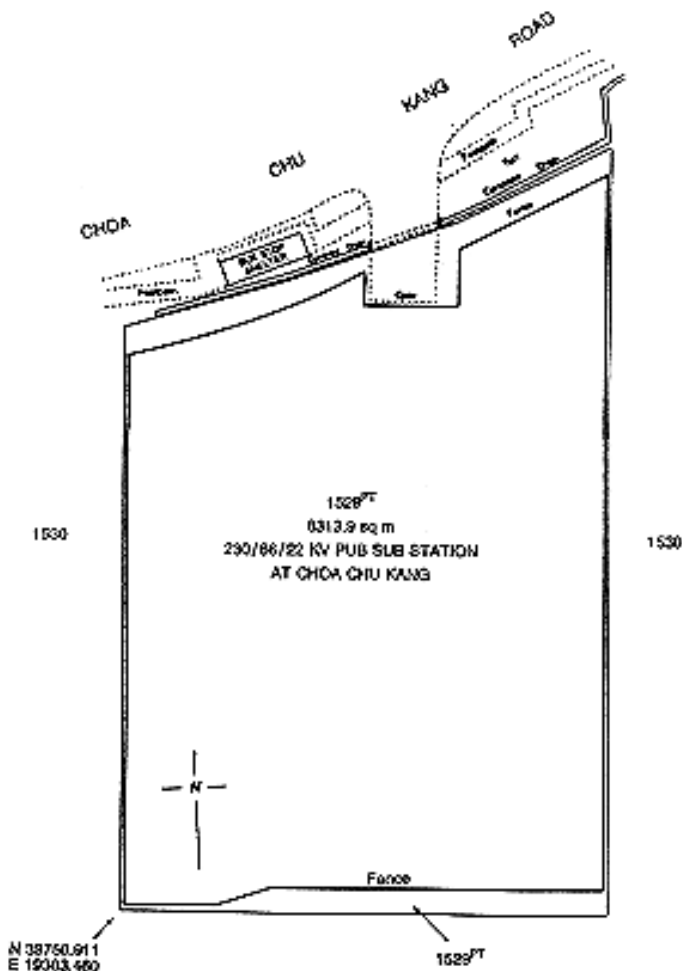
First column
The Authority

Second column
Protected Place

to the point of commencement.

The boundaries of the “PUB 230/66/22KV substation” are more particularly delineated in the Plan set out hereunder:

PUBLIC UTILITIES BOARD
SUBSTATION AT CHOA CHU KANG ROAD



THE SCHEDULE — *continued*

First column

Second column

The Authority

Protected Place

- (4) S 368/91 [23.8.91] MRT OPERATIONS CONTROL CENTRE.
 Managing Director,
 Singapore MRT Ltd.

All the building (excluding its walkway at the ground level) and area known as “MRT OPERATIONS CONTROL CENTRE” comprised in part of Lots 371 and 401 T.S. No. 11 containing an area of about 5,380 square metres and bounded approximately as follows:

Commencing at the northern-most corner of the aforesaid “MRT OPERATIONS CONTROL CENTRE” which point is 30,824.0 metres North and 30,014.7 metres East of the Survey Department origin of co-ordinates, the boundaries run along successive lines of bearings and distances as under:

<i>Bearing</i>	<i>Distance in metres</i>
121° 50'	27.6 (along the outer face of corrugated wall)
121° 59'	35.7
122° 45'	3.5
212° 02'	10.5 (along the outer face of pillars)
122° 02'	0.1
211° 48'	16.8 (along the outer face of pillars)
125° 21'	0.1 (along the outer face of pillars)
212° 06'	7.7 (along fence and gate)

thence along successive lines of wall of bearings and distances approximately as under:

<i>Bearing</i>	<i>Distance in metres</i>
302° 15'	0.4

THE SCHEDULE — *continued*

<i>First column</i>	<i>Second column</i>
The Authority	Protected Place

212° 00' 24.3

299° 29' 26.5

thence along the common wall between MRT OPERATIONS CONTROL CENTRE AND MRT HEADQUARTERS on a bearing of approximately 209° 37' for a distance of about 12.9 metres, thence following the exterior limits of the upper floor, the boundaries run along successive lines of bearings and distances approximately as under:

<i>Bearing</i>	<i>Distance in metres</i>
----------------	---------------------------

299° 28' 53.2

351° 54' 10.0

44° 21' 53.6

118° 10' 3.3

to a point where it meets another corner of the building and following the exterior wall of the building and the details at the ground level, the boundaries run along successive lines of bearings and distances approximately as under:

<i>Bearing</i>	<i>Distance in metres</i>
----------------	---------------------------

199° 59' 0.9

209° 59' 0.2 (along outer face of building)

119° 38' 3.2

31° 06' 2.1 (along gap, outer face of pillars and gate)

31° 31' 8.3 (along outer face of pillars and gate)

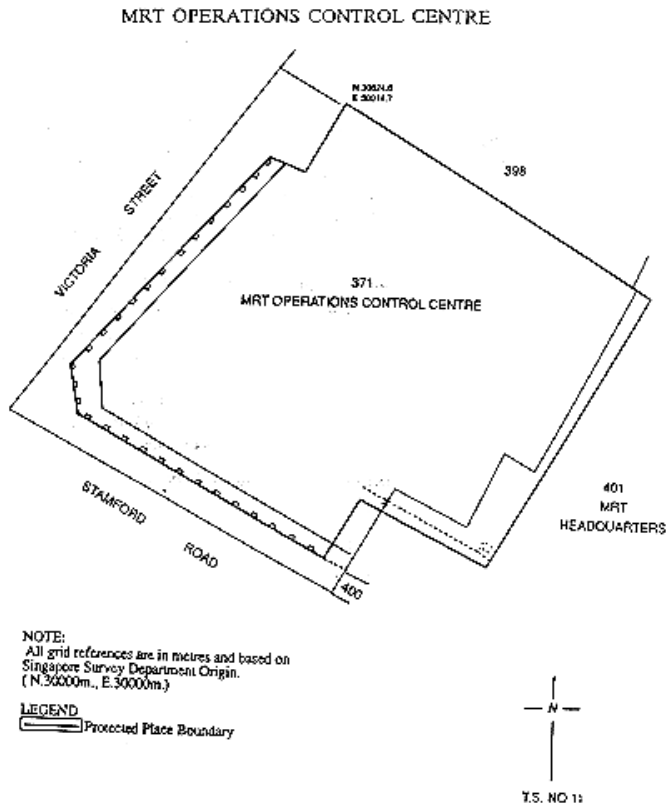
31° 55' 5.0 (along gate and outer face of corrugated wall)

to the point of commencement.

THE SCHEDULE — *continued*

<i>First column</i>	<i>Second column</i>
The Authority	Protected Place

The boundaries of “MRT OPERATIONS CONTROL CENTRE” are more particularly delineated in the Plan set out hereunder:



<i>First column</i>	<i>Second column</i>
The Authority	Protected Place
<p>(5) S 398/91 [13.9.91] Managing Director, Singapore MRT Ltd.</p> <p>Managing Director, Singapore MRT Ltd.</p>	<p>(1) [<i>Deleted by S 230/2016 wef 24/05/2016</i>]</p> <p>(2) MRT CHANGI DEPOT</p>

THE SCHEDULE — *continued**First column**Second column*

The Authority

Protected Place

All that area comprised in part of State Land Lots 433, 434, 454, 436, 455, 437, 456, 438, 439, 440, 442, 443, 1727, 1726, 447, 448, 1482, 1483, 1484, 1485, 1486, 1487, 1489, 1490, 1491, 1492, 1493, 1494, 1495, 1496, 1497, 1498, 1499, 1257, 1538, 3666, part of State Reserve and whole of State Land Lots 441, 445, 1844 Mukim No. 27 (BEDOK), occupied by MRT CHANGI DEPOT containing an area of about 162,812 square metres and bounded approximately as follows:

Commencing at the southern-most corner of the aforesaid “MRT CHANGI DEPOT” which point is 34,298.3 metres North and 42,490.7 metres East of the Survey Department origin of co-ordinates, the boundaries run along successive lines of bearings and distances as under:

<i>Bearing</i>	<i>Distance in metres</i>
305° 39'	278.9
307° 23'	231.2
281° 12'	67.8
264° 33'	230.4
308° 52'	89.0
257° 24'	52.7
329° 03'	4.7
20° 06'	2.0
37° 56'	1.8
69° 49'	3.1
80° 04'	3.2
350° 57'	7.1 (along a gate)
260° 42'	9.7
327° 45'	36.8

THE SCHEDULE — *continued*

<i>First column</i>	<i>Second column</i>
The Authority	Protected Place
58° 32'	11.5
328° 34'	9.5 (along a gate)
238° 09'	5.0 (along outer wall of bin centre)
328° 09'	0.2 (along outer wall of bin centre)
237° 18'	6.5
328° 08'	112.7
58° 08'	1.4
328° 20'	4.3
238° 15'	1.4
328° 15'	136.4
68° 59'	17.1
83° 51'	11.6
111° 19'	12.0
122° 39'	29.8
112° 55'	110.5
146° 54'	41.3
130° 55'	21.5
106° 18'	20.2 (along outer wall of concrete deck)
14° 02'	1.2 (along outer wall of concrete deck)
104° 02'	0.4 (along outer wall of concrete deck)
194° 02'	0.3 (along outer wall of concrete deck)
106° 44'	14.8
106° 32'	135.7

THE SCHEDULE — *continued*

<i>First column</i>	<i>Second column</i>
The Authority	Protected Place
106° 34'	193.0
193° 35'	5.6
106° 35'	35.8
126° 54'	3.0
106° 47'	100.8
104° 14'	36.3
106° 26'	89.3
106° 28'	116.7
106° 35'	105.0
127° 29'	26.6
137° 41'	1.6
146° 35'	6.5 (along a gate)
137° 20'	3.0
146° 31'	5.9
152° 25'	33.1
181° 50'	23.6
192° 55'	47.0
199° 44'	105.1
210° 41'	30.3
258° 43'	13.1

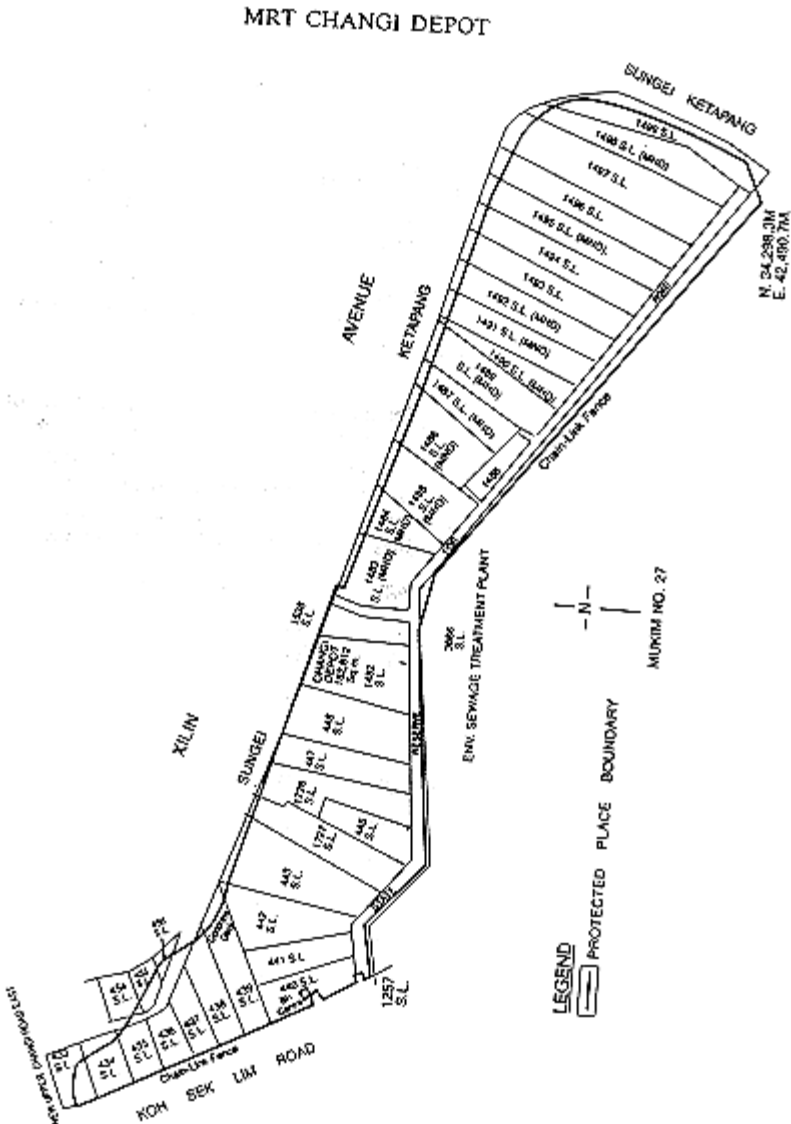
to the point of commencement.

The boundary of “MRT CHANGI DEPOT” is more particularly delineated in the Plan set out hereunder.

THE SCHEDULE — continued

First column
The Authority

Second column
Protected Place



Managing Director, (3) MRT ULU PANDAN DEPOT
Singapore MRT Ltd.

All that area comprised in part of State Land Lots
4051, 2001, 2006, 4049, 206, 4053, 4055, 212,

THE SCHEDULE — *continued*

First column
The Authority

Second column
Protected Place

263, 262, 259, 261, 260, 253, 2001, 2002, 246, 245, 244, 1982, 240, 239, 430, 297, 298, 299, part of State Reserve and whole of State Land Lots 247, 248, 249, 243, 242, 241, Mukim No. 5 (PANDAN) occupied by MRT ULU PANDAN DEPOT containing an area of about 165,192 square metres and bounded approximately as follows:

Commencing at the western-most corner of the aforesaid “MRT ULU PANDAN” which point is 34,397.0 metres North and 19,645.8 metres East of the Survey Department origin of co-ordinates, the boundaries run along successive lines of bearings and distances as under:

<i>Bearing</i>	<i>Distance in metres</i>
88° 36'	32.8
91° 06'	42.2
89° 56'	38.7
65° 07'	37.6
40° 28'	35.6
34° 34'	36.6
5° 43'	18.3
9° 56'	62.3
354° 25'	9.4
356° 14'	78.7
36° 09'	18.9
1° 34'	76.6
337° 46'	28.6
342° 43'	3.3
336° 46'	35.6
68° 48'	12.5

THE SCHEDULE — *continued*

<i>First column</i>	<i>Second column</i>
The Authority	Protected Place
69° 19'	13.5
349° 18'	22.5
327° 22'	52.2
329° 47'	55.4
342° 45'	19.5
342° 48'	12.3
342° 29'	12.3
344° 56'	4.9
344° 50'	8.8
261° 01'	0.2 (along a wall)
351° 01'	12.2 (along a gate and wall)
81° 01'	0.2 (along a wall)
351° 00'	14.0
350° 52'	14.0
351° 11'	16.8
353° 20'	5.7
359° 38'	5.9
3° 32'	8.8
3° 09'	27.2
3° 33'	13.8
359° 08'	8.7
2° 33'	23.8
6° 41'	10.1
19° 25'	41.8
33° 32'	7.5
45° 56'	8.5
54° 11'	14.9

THE SCHEDULE — *continued*

<i>First column</i>	<i>Second column</i>
The Authority	Protected Place
61° 26'	2.7 (along a wall)
68° 18'	7.4
80° 06'	9.8
89° 29'	9.8
99° 44'	10.1
104° 01'	35.5
97° 33'	45.2
103° 08'	16.1
183° 21'	11.5
179° 32'	63.4
179° 55'	29.9
179° 57'	30.1
180° 02'	33.0
179° 57'	36.5
180° 00'	69.7
180° 02'	59.5
179° 55'	23.3
262° 54'	25.9
180° 00'	22.9
99° 32'	25.9
180° 03'	59.0
180° 00'	54.5
180° 03'	30.0
180° 03'	73.8
179° 53'	57.2
180° 04'	55.3
180° 01'	74.1

THE SCHEDULE — *continued*

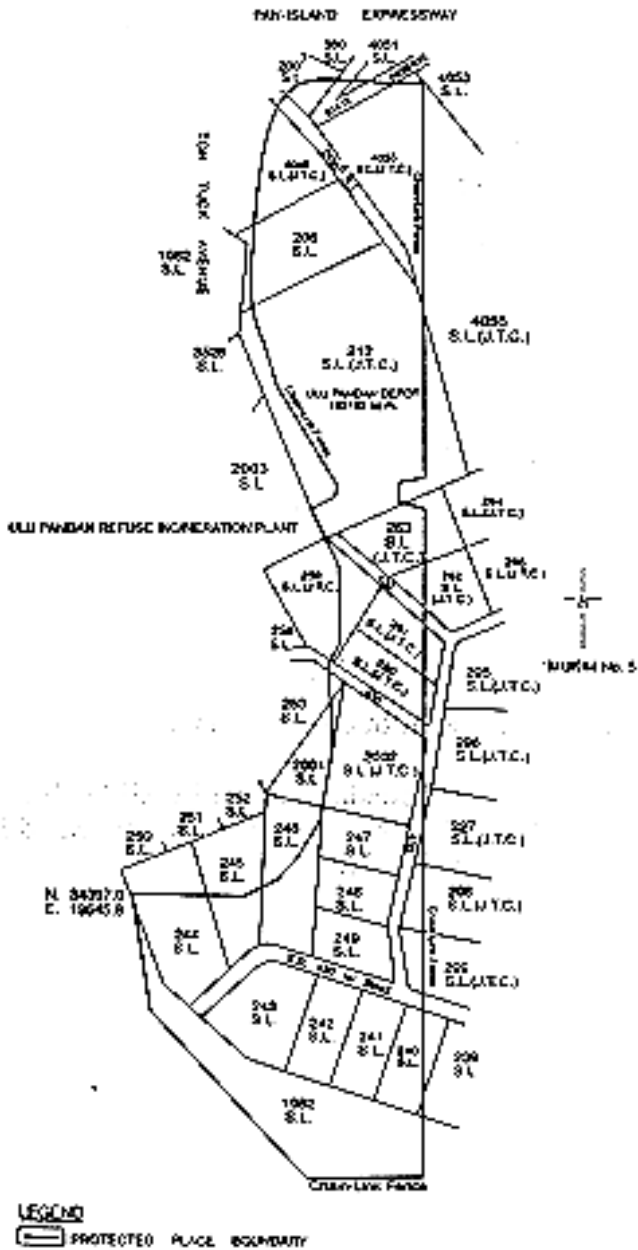
<i>First column</i>	<i>Second column</i>
The Authority	Protected Place
179° 54'	55.8
180° 07'	47.5
179° 58'	56.0
179° 58'	24.3
179° 57'	40.5
180° 02'	47.2
269° 59'	50.8
269° 53'	68.6
316° 46'	39.0
316° 47'	68.9
316° 51'	70.9
316° 45'	50.0
350° 19'	42.5
350° 18'	76.4

to the point of commencement.

The boundary of “MRT ULU PANDAN DEPOT” is more particularly delineated in the Plan set out hereunder.

THE SCHEDULE — *continued*

MRT ULU PANDAN DEPOT



THE SCHEDULE — *continued*

<i>First column</i>	<i>Second column</i>
The Authority	Protected Place
(6) S 399/91 [13.9.91] Director of Prisons.	(1) KHALSA CRESCENT PRISON

All that area comprised in part of State Land Lots 932 and 2006 Mukim No. 13 (Sembawang) occupied by KHALSA CRESCENT PRISON containing an area of about 27,499 square metres and bounded approximately as follows:

Commencing at the northern-most corner of the perimeter fence of the aforesaid KHALSA CRESCENT PRISON which point is 48,265.1 metres North and 22,421.1 metres East of the Survey Department origin of co-ordinates (30,000 metres North, 30,000 metres East), the boundary runs along successive lines of fences of bearings and distances as under:

<i>Bearing</i>	<i>Distance in metres</i>
163° 11'	140.3
257° 23'	8.5
259° 39'	56.9 (partly along a gate)
306° 04'	18.0
206° 50'	8.8
200° 08'	5.6
285° 29'	6.1 (along a gate)
196° 26'	14.0 (partly along a gate)
286° 32'	127.1
238° 23'	4.0
267° 22'	5.4
11° 19'	4.8 (along a gate)
286° 26'	42.5
21° 50'	66.1
73° 36'	114.6

THE SCHEDULE — *continued*

<i>First column</i>	<i>Second column</i>
The Authority	Protected Place

79° 43'	91.3
---------	------

to the point of commencement.

The boundaries of KHALSA CRESCENT PRISON are more particularly delineated and edged pink on Survey Plan No. S.P. 20013 filed in the office of the Chief Surveyor, Singapore.

Director of Prisons.

(2) FALKLAND CENTRE AND ANCILLARIES (PASSAGEWAY AND PARADE SQUARE)

All those areas comprised in parts of State Land Lot 1300 Mukim No 13 (Sembawang) occupied by “FALKLAND CENTRE” and its ancillary facilities namely “PASSAGEWAY” and “PARADE SQUARE” containing areas of about 5,826 square metres, 228 square metres and 3,926 square metres, respectively, and bounded approximately as follows:

(a) FALKLAND CENTRE

Commencing at a northern-most corner of the perimeter fence of the aforesaid “FALKLAND CENTRE” which point is 49,258.3 metres North and 27,240.2 metres East of the Survey Department origin of co-ordinates (30,000 metres North, 30,000 metres East), the boundaries run along successive lines of fences of bearings and distances as under:

<i>Bearing</i>	<i>Distance in metres</i>
119° 06'	41.4
209° 34'	5.9
119° 19'	36.1
37° 52'	3.4
119° 58'	23.5
206° 46'	2.9

THE SCHEDULE — *continued*

<i>First column</i>	<i>Second column</i>
The Authority	Protected Place
117° 44'	11.9
202° 20'	21.7
204° 10'	1.2 (along a gate)
202° 35'	4.0 (along a gate)
297° 51'	5.7
210° 55'	42.9
301° 33'	56.6
297° 28'	0.9 (along a gate)
302° 57'	1.9
18° 40'	39.2
9° 59'	7.8
299° 28'	43.0
34° 22'	26.9

to the point of commencement.

(b) PASSAGEWAY ANCILLARY TO
FALKLAND CENTRE

Commencing at a northern-most corner of the perimeter fence of the aforesaid "PASSAGEWAY ANCILLARY" to "FALKLAND CENTRE" which point is 49,166.6 metres North and 27,246.6 metres East of the Survey Department origin of coordinates (30,000 metres North, 30,000 metres East), the boundaries run along successive lines of fences of bearings and distances as under:

<i>Bearing</i>	<i>Distance in metres</i>
124° 42'	0.3
114° 49'	2.4 (along a gate)
109° 22'	0.8
199° 46'	33.8

THE SCHEDULE — *continued*

<i>First column</i>	<i>Second column</i>
The Authority	Protected Place
190° 02'	17.6
208° 16'	1.1 (along a gate)
211° 23'	0.7
294° 23'	0.8
300° 09'	2.4 (along a gate)
300° 06'	0.6
298° 10'	2.8
19° 47'	51.2
35° 12'	1.1

to the point of commencement; and

(c) PARADE SQUARE ANCILLARY TO
FALKLAND CENTRE

Commencing at a northern-most corner of perimeter fence of the aforesaid “PARADE SQUARE ANCILLARY TO FALKLAND CENTRE” which point is 49,116.3 metres North and 27,231.1 metres East of the Survey Department origin of co-ordinates (30,000 metres North, 30,000 metres East), the boundaries run along successive lines of fences of bearings and distances as under:

<i>Bearing</i>	<i>Distance in metres</i>
124° 06'	0.6
120° 09'	2.4 (along a gate)
114° 23'	0.8
119° 57'	83.4
211° 18'	45.4
300° 07'	86.2
30° 08'	45.1

to the point of commencement.

THE SCHEDULE — *continued*

First column
The Authority

Second column
Protected Place

The boundaries of “FALKLAND CENTRE” together with those of the “PASSAGEWAY” and “PARADE SQUARE ANCILLARY” to the “FALKLAND CENTRE” are more particularly delineated and edged pink on Survey Plan No. 20015 filed in the office of the Chief Surveyor, Singapore.

Director of Prisons

(3) SELARANG PARK CENTRE

All that area comprised in part of State Land Lot 1610 MUKIM NO. 31 (CHANGI) occupied by “SELARANG PARK CENTRE” containing an area of about 1,549 square metres and bounded approximately as follows:

Commencing at the northern-most point of the aforesaid “SELARANG PARK CENTRE” which point is 39,445.7 metres North and 44,150.4 metres East of the Survey Department origin of co-ordinates (30,000 metres North, 30,000 metres East), the boundary runs along successive lines of fences of bearings and distances as under:

<i>Bearing</i>	<i>Distance in metres</i>
108° 39'	30.0 (partly along a gate)
103° 28'	10.1 (along building wall)
184° 17'	0.1 (along building wall)
105° 35'	1.8 (along a gate)
103° 15'	17.7
157° 17'	20.2 (partly along a gate)
158° 29'	3.4
165° 14'	2.4
182° 47'	3.3
277° 45'	33.3

THE SCHEDULE — *continued*

<i>First column</i>	<i>Second column</i>
The Authority	Protected Place
283° 05'	2.0
283° 29'	10.1 (along building wall)
10° 32'	0.8 (along building wall)
319° 38'	36.9
13° 47'	7.9

to the point of commencement.

The boundary of “SELARANG PARK CENTRE” are more particularly delineated and edged pink on Survey Plan No. S.P. 30016 filed in the office of the Chief Surveyor, Singapore.

(4) [*Deleted by S 19/2013 wef 16/01/2013*]

Director of Prisons.

(5) TANAH MERAH CENTRE

All that area comprised in part of State Land Lot 341-2 MUKIM NO. 31 (CHANGI) occupied by “TANAH MERAH CENTRE” containing an area of about 10,819 square metres and bounded approximately as follows:

Commencing at the northern-most point of the aforesaid “TANAH MERAH CENTRE” which point is 39,098.0 metres North and 44,308.9 metres East of the Survey Department origin of co-ordinates (30,000 metres North, 30,000 metres East), the boundaries run along successive lines of fences of bearings and distances as under:

<i>Bearing</i>	<i>Distance in metres</i>
146° 53'	26.2
236° 02'	46.5
325° 49'	3.6
236° 50'	18.4
165° 03'	50.9

THE SCHEDULE — *continued*

<i>First column</i>		<i>Second column</i>
The Authority		Protected Place
	174° 22'	3.6
	161° 03'	8.7
	179° 11'	30.2
	94° 49'	32.3
	184° 31'	63.9
	226° 17'	58.7
	323° 45'	12.4
	325° 53'	5.9
	331° 22'	3.0
	340° 04'	3.0
	345° 04'	3.0
	350° 38'	3.1
	359° 59'	6.0
	6° 32'	3.0
	13° 51'	3.1
	15° 24'	40.0
	7° 07'	6.0
	359° 03'	11.2
	21° 25'	2.8
	1° 36'	7.4 (along a gate)
	339° 03'	4.5
	272° 44'	3.5
	2° 39'	5.6
	322° 10'	44.3
	320° 16'	14.0
	326° 57'	13.5
	236° 38'	3.0

THE SCHEDULE — *continued*

<i>First column</i>		<i>Second column</i>
The Authority		Protected Place
	314° 57'	3.7
	319° 59'	4.0 (along a gate)
	330° 17'	3.2
	322° 35'	6.2
	55° 57'	10.2
	48° 35'	4.2
	36° 20'	5.0
	43° 59'	2.0
	47° 23'	2.6
	55° 28'	2.5
	59° 59'	1.9
	58° 48'	16.7
	48° 28'	15.1
	47° 45'	7.2
	57° 50'	32.9
	61° 42'	11.9
	64° 52'	13.1

to the point of commencement.

The boundaries of “TANAH MERAH CENTRE” are more particularly delineated and edged pink on Survey Plan No. S.P.30013 filed in the office of the Chief Surveyor, Singapore.

Director of Prisons.

(6) PRISON HEADQUARTERS

All that areas comprised in part of State Land Lots 341-1, 341-2, 341-4, 365, 1312 and part of UPPER CHANGI ROAD NORTH Mukim No. 31 (CHANGI), occupied by “PRISON HEADQUARTERS” containing an area of about 42,236 square metres and bounded approximately as follows:

THE SCHEDULE — *continued*

First column

Second column

The Authority

Protected Place

Commencing at the northern-most point of the aforesaid “PRISON HEADQUARTERS” which point is 39,224.7 metres North and 44,614.2 metres East of the Survey Department origin of co-ordinates (30,000 metres North, 30,000 metres East), the boundaries run along successive lines of fences of bearings and distances as under:

Bearing *Distance in metres*

122° 52'	3.1
169° 51'	20.0
211° 38'	5.2 (along a gate)
124° 53'	5.2
160° 07'	32.4
88° 09'	11.7
170° 13'	21.2
193° 33'	52.5
114° 27'	4.7
202° 25'	2.8
187° 21'	54.3
238° 31'	25.2
203° 04'	42.3
202° 59'	100.9
293° 02'	86.7
315° 32'	28.2
226° 44'	11.4
315° 48'	44.9
47° 16'	37.7
318° 21'	17.9

THE SCHEDULE — *continued*

<i>First column</i>	<i>Second column</i>
The Authority	Protected Place
1° 01'	10.0 (across a gap)
58° 08'	15.9
38° 31'	23.4
327° 17'	76.4
68° 34'	5.8

to meet a point at the corner of a garden wall, thence along the outer face of the garden wall on successive lines of fences of bearings and distances as under:

<i>Bearing</i>	<i>Distance in metres</i>
340° 15'	0.2
70° 57'	3.7
159° 34'	0.6
68° 51'	0.4
158° 23'	0.3

to meet a gate, thence along the said gate on a line of bearing of 85° 34' for a distance of 9.1 metres to meet a point at the corner of a pillar on successive lines of fences of bearings and distances as under:

<i>Bearing</i>	<i>Distance in metres</i>
351° 04'	0.3
79° 27'	0.3

to meet a point along another garden wall, thence partly along the outer face of the said garden wall on a line of bearing of 9° 39' for a distance of 0.8 metres to meet another point, thence across the garden wall on a line of bearing of 83° 55' for a distance of 0.1 metre to meet a fence, thence along successive lines of fences of bearings and distances as under:

THE SCHEDULE — *continued*

<i>First column</i>	<i>Second column</i>
The Authority	Protected Place
	<i>Bearing</i>
	<i>Distance in metres</i>
	83° 55'
	26.7
	80° 46'
	24.1
	78° 30'
	19.7
	70° 09'
	7.3
	61° 29'
	31.4
	45° 18'
	21.0
	355° 55'
	3.0
	47° 50'
	13.7
	43° 34'
	21.2
	37° 27'
	47.8
	54° 58'
	4.9

to the point of commencement.

The boundaries of “PRISON HEADQUARTERS” are more particularly delineated and edged pink on Survey Plan No. S.P.30014 filed in the office of the Chief Surveyor, Singapore.

Director of Prisons.

(7) CLEMENTI CENTRE

All that area comprised in part of State Land Lot 79-4 MUKIM No. 3 (PASIR PANJANG) occupied by “CLEMENTI CENTRE” containing an area of about 5,195 square metres and bounded approximately as follows:

Commencing at the northern-most point of the aforesaid “CLEMENTI CENTRE” which point is 30,372.2 metres North and 21,556.0 metres East of the Survey Department origin of co-ordinates (30,000 metres North, 30,000 metres East), the boundaries run along successive lines of fences of bearings and distances as under:

THE SCHEDULE — *continued*

<i>First column</i>	<i>Second column</i>
The Authority	Protected Place
<i>Bearing</i>	<i>Distance in metres</i>
112° 46'	36.0
195° 06'	42.5
195° 58'	63.7
288° 09'	17.3
288° 40'	5.1 (along a gate)
288° 26'	36.1
23° 38'	39.5
42° 10'	6.7
28° 25'	64.3

to the point of commencement.

The boundaries of “CLEMENTI CENTRE” are more particularly delineated and edged pink on Survey Plan No. S.P. 40011 filed in the office of the Chief Surveyor, Singapore.

[S 19/2013 wef 16/01/2013]

<i>First column</i>	<i>Second column</i>
The Authority	Protected Place
(7) S 422/91 [27.9.91] SINGAPORE Chief Executive Officer (VP/GM), Singapore Electronic & Engineering (Private) Limited	ELECTRONIC & ENGINEERING (PRIVATE) LIMITED PREMISES.

All that area comprised in part of Lot 8882 No. 18 (ANG MO KIO), occupied by “SINGAPORE ELECTRONIC & ENGINEERING (PRIVATE) LIMITED PREMISES” containing an area of about 14,760 square metres and bounded approximately as follows:

THE SCHEDULE — *continued*

<i>First column</i>	<i>Second column</i>																																				
The Authority	Protected Place																																				
	Commencing at a point on the northern-most corner of the perimeter fence of the aforesaid “SINGAPORE ELECTRONIC & ENGINEERING (PRIVATE) LIMITED PREMISES” which point is 41,566.9 metres North and 29,828.7 metres East of the Survey Department origin of co-ordinates (N 30,000m, E. 30,000 m), the boundaries run along successive lines of fence of bearings and distances as under:																																				
	<table border="0"> <thead> <tr> <th style="text-align: left;"><i>Bearing</i></th> <th style="text-align: left;"><i>Distance in metres</i></th> </tr> </thead> <tbody> <tr><td>94° 47'</td><td>6.0</td></tr> <tr><td>100° 08'</td><td>6.0</td></tr> <tr><td>111° 08'</td><td>6.2</td></tr> <tr><td>120° 01'</td><td>6.0</td></tr> <tr><td>126° 29'</td><td>5.7</td></tr> <tr><td>135° 50'</td><td>5.8</td></tr> <tr><td>142° 49'</td><td>6.0</td></tr> <tr><td>150° 14'</td><td>5.9</td></tr> <tr><td>162° 53'</td><td>6.0</td></tr> <tr><td>169° 54'</td><td>6.2</td></tr> <tr><td>179° 00'</td><td>6.2</td></tr> <tr><td>184° 50'</td><td>63.6</td></tr> <tr><td>267° 19'</td><td>32.6</td></tr> <tr><td>267° 33'</td><td>107.6 (along two successive gates)</td></tr> <tr><td>353° 41'</td><td>2.0</td></tr> <tr><td>356° 03'</td><td>6.6 (along a gate)</td></tr> <tr><td>359° 28'</td><td>0.9</td></tr> </tbody> </table>	<i>Bearing</i>	<i>Distance in metres</i>	94° 47'	6.0	100° 08'	6.0	111° 08'	6.2	120° 01'	6.0	126° 29'	5.7	135° 50'	5.8	142° 49'	6.0	150° 14'	5.9	162° 53'	6.0	169° 54'	6.2	179° 00'	6.2	184° 50'	63.6	267° 19'	32.6	267° 33'	107.6 (along two successive gates)	353° 41'	2.0	356° 03'	6.6 (along a gate)	359° 28'	0.9
<i>Bearing</i>	<i>Distance in metres</i>																																				
94° 47'	6.0																																				
100° 08'	6.0																																				
111° 08'	6.2																																				
120° 01'	6.0																																				
126° 29'	5.7																																				
135° 50'	5.8																																				
142° 49'	6.0																																				
150° 14'	5.9																																				
162° 53'	6.0																																				
169° 54'	6.2																																				
179° 00'	6.2																																				
184° 50'	63.6																																				
267° 19'	32.6																																				
267° 33'	107.6 (along two successive gates)																																				
353° 41'	2.0																																				
356° 03'	6.6 (along a gate)																																				
359° 28'	0.9																																				

THE SCHEDULE — *continued*

First column

Second column

The Authority

Protected Place

to meet a building wall, thence along successive lines following the building wall of bearings and distances as under:

<i>Bearing</i>	<i>Distance in metres</i>
269° 06'	0.1
359° 06'	0.1
272° 19'	0.1
352° 11'	0.3
82° 11'	0.1
357° 11'	2.5 (successively along a wall, a gate and a wall)
269° 59'	0.1
356° 14'	0.1

to meet a fence, thence along successive lines of fence of bearings and distances as under:

<i>Bearing</i>	<i>Distance in metres</i>
267° 47'	1.7
353° 59'	18.8
351° 32'	21.1

to meet a wall, thence along successive lines following the wall of bearings and distances as under:

<i>Bearing</i>	<i>Distance in metres</i>
258° 14'	0.2
348° 14'	6.5

to meet a gate, thence along a line following the gate on an approximate bearing of 347° 56' and for a distance of approximately 10.7 metres to meet a wall, thence along successive lines

THE SCHEDULE — *continued*

<i>First column</i>	<i>Second column</i>																
The Authority	Protected Place																
	following the wall of bearings and distances as under:																
	<table border="0"> <thead> <tr> <th style="text-align: left;"><i>Bearing</i></th> <th style="text-align: left;"><i>Distance in metres</i></th> </tr> </thead> <tbody> <tr> <td>347° 03'</td> <td>12.8</td> </tr> <tr> <td>31° 31'</td> <td>10.3</td> </tr> <tr> <td>83° 51'</td> <td>2.5</td> </tr> <tr> <td>173° 51'</td> <td>0.1</td> </tr> </tbody> </table>	<i>Bearing</i>	<i>Distance in metres</i>	347° 03'	12.8	31° 31'	10.3	83° 51'	2.5	173° 51'	0.1						
<i>Bearing</i>	<i>Distance in metres</i>																
347° 03'	12.8																
31° 31'	10.3																
83° 51'	2.5																
173° 51'	0.1																
	to meet a fence, thence along successive lines of fence of bearings and distances as under:																
	<table border="0"> <thead> <tr> <th style="text-align: left;"><i>Bearing</i></th> <th style="text-align: left;"><i>Distance in metres</i></th> </tr> </thead> <tbody> <tr> <td>83° 36'</td> <td>33.3</td> </tr> <tr> <td>166° 25'</td> <td>0.6</td> </tr> <tr> <td>78° 31'</td> <td>15.3</td> </tr> <tr> <td>351° 01'</td> <td>0.7</td> </tr> <tr> <td>72° 56'</td> <td>36.5</td> </tr> <tr> <td>80° 58'</td> <td>13.0</td> </tr> <tr> <td>82° 46'</td> <td>15.4</td> </tr> </tbody> </table>	<i>Bearing</i>	<i>Distance in metres</i>	83° 36'	33.3	166° 25'	0.6	78° 31'	15.3	351° 01'	0.7	72° 56'	36.5	80° 58'	13.0	82° 46'	15.4
<i>Bearing</i>	<i>Distance in metres</i>																
83° 36'	33.3																
166° 25'	0.6																
78° 31'	15.3																
351° 01'	0.7																
72° 56'	36.5																
80° 58'	13.0																
82° 46'	15.4																
	to the point of commencement.																
	The boundaries of “SINGAPORE ELECTRONIC & ENGINEERING (PRIVATE) LIMITED PREMISES” are more particularly delineated and edged pink on survey Plan No. 20009 filed in the office of the Chief Surveyor, Singapore.																

<i>First column</i>	<i>Second column</i>
(8) S 505/91 [22.11.91] General Manager, Singapore Broadcasting Corporation.	1. SINGAPORE BROADCASTING CORPORATION.

THE SCHEDULE — *continued**First column**Second column*

All that area at SINGAPORE BROADCASTING CORPORATION (CALDECOLT HILL) comprised in Lot 31-33, 31-144 and lot 845 Mukim 17, Toa Payoh containing an area of approximately 68,876.0 square metres and bounded approximately as follows:

Commencing at a point on the northern-most corner of the perimeter fence of the aforesaid SINGAPORE BROADCASTING CORPORATION which point is 35,710.1 metres North and 28,123.3 metres East of the Survey Department origin of co-ordinates (N 30,000.0 m. E 30,000.0 m) the boundaries run along successive lines of fence of bearings and distances as under:

<i>Bearing</i>	<i>Distance in metres</i>
108° 12'	38.9
117° 42'	7.2
150° 29'	43.7
178° 04'	43.6
180° 09'	29.1
182° 39'	82.6
214° 00'	2.8
252° 04'	3.1
217° 51'	3.9 (partly along a gate)
177° 33'	2.9
220° 55'	2.4
245° 20'	13.3
225° 49'	7.0 (partly along edge of sub-station)
327° 02'	2.1
243° 43'	5.0

THE SCHEDULE — *continued*

First column

Second column

246° 47'	2.9 (partly along a gate)
330° 57'	10.4
263° 38'	0.3
337° 02'	2.0
26° 41'	2.9
330° 51'	4.8 (partly along a gate)
252° 54'	3.0
331° 51'	76.7
341° 12'	2.6
333° 02'	13.7
276° 26'	6.9
276° 18'	5.4 (partly along a gate across Olive Road)
278° 12'	5.3
183° 20'	5.2
211° 39'	95.5
193° 43'	27.6
262° 53'	3.0
238° 50'	3.0
153° 23'	6.1 (partly along a gate)
88° 07'	0.9
194° 11'	54.7
231° 28'	6.0
263° 50'	6.3
305° 52'	37.6
310° 52'	96.6
314° 27'	0.3 (partly along a wall)
349° 47'	2.9 (partly along a wall)

THE SCHEDULE — *continued*

First column

Second column

310° 41'	47.0 (partly along a wall)
311° 43'	7.8 (partly along entrance to gate)
310° 23'	28.1 (partly along a wall)
311° 08'	2.9 (partly along entrance to gate)
311° 03'	7.4 (partly along a wall)
319° 44'	8.2 (partly along a wall)
328° 12'	7.2 (partly along a wall)
334° 16'	6.7 (partly along a wall)
339° 48'	6.0 (partly along a wall)
347° 12'	6.9 (partly along a wall)
355° 24'	7.7 (partly along a wall)
1° 57'	6.6 (partly along a wall)
3° 36'	3.2 (partly along a wall)
9° 03'	3.7 (partly along a wall)
10° 50'	4.9 (partly along a wall)
15° 50'	3.7 (partly along a wall)
25° 13'	7.9 (partly along a wall)
35° 29'	4.1 (partly along a wall)
38° 15'	8.8 (partly along a wall)
39° 56'	3.0 (partly along a wall)
42° 34'	3.0 (partly along a wall)
45° 16'	3.8 (partly along a wall)
17° 18'	1.0 (partly along a wall)
52° 51'	4.4 (partly along a wall)
137° 01'	0.7 (partly along a wall)
49° 31'	10.5

THE SCHEDULE — *continued*

First column

Second column

136° 36'	8.0 (partly along a wall)
48° 28'	1.7 (partly along a wall)
80° 23'	1.4 (partly along a wall)
352° 02'	0.8 (partly along a wall)
49° 13'	10.9 (partly along a wall)
44° 19'	6.3 (partly along a wall)
45° 52'	5.7 (partly along a wall)
50° 21'	3.9 (partly along a wall)
100° 37'	4.5 (partly along a wall)
174° 43'	0.8
59° 49'	13.6
50° 23'	5.2
35° 52'	4.8
19° 12'	5.0
11° 13'	5.8
83° 50'	1.9
58° 34'	2.9
87° 21'	46.6
103° 35'	2.8
109° 59'	26.6
209° 57'	2.0
222° 15'	2.1
151° 33'	7.9 (partly along a gate)
62° 38'	7.2
70° 03'	6.3
110° 03'	38.9
110° 12'	5.1
110° 09'	9.6

THE SCHEDULE — *continued*

<i>First column</i>	<i>Second column</i>
61° 39'	2.7
39° 49'	1.7 (partly along a gate across Olive Road)
47° 26'	2.4
53° 45'	13.2 (partly along a gate)
67° 48'	3.0
47° 02'	3.4
48° 40'	16.8
56° 45'	5.9
60° 27'	44.4
93° 03'	3.0
65° 13'	7.4 (partly along a gate)
20° 48'	2.5

to the point of commencement.

Director of Telecommunications. of 2. [*Deleted by S 298/2006, wef 08/06/2006.*]

<i>First column</i>	<i>Second column</i>
The Authority	Protected Place

(9) S 525/91 [29.11.91]

Senior Terminals Security Manager, PSA Corporation Limited 1. TANJONG PAGAR TERMINAL AND KEPPEL TERMINAL.

All that area occupied by “TANJONG PAGAR TERMINAL AND KEPPEL TERMINAL” containing an area of approximately 1,809,270 square metres and bounded by Telok Blangah Road, Keppel Road, East Coast Parkway, East Lagoon and Keppel Harbour.

The boundary commences at the westernmost corner of the aforesaid “TANJONG PAGAR TERMINAL AND KEPPEL TERMINAL” which point bears the co-ordinates North

THE SCHEDULE — *continued*

<i>First column</i>	<i>Second column</i>																																																
The Authority	Protected Place																																																
	27,288.561 metres and East 26,954.409 metres of the Singapore Land Authority SVY 21 Datum and runs approximately as follows:																																																
	<table border="0"> <thead> <tr> <th style="text-align: left;"><i>Northing</i></th> <th style="text-align: left;"><i>Easting</i></th> </tr> </thead> <tbody> <tr><td>27,288.561</td><td>26,954.409</td></tr> <tr><td>27,315.175</td><td>26,954.984</td></tr> <tr><td>27,318.082</td><td>26,954.964</td></tr> <tr><td>27,337.162</td><td>26,963.051</td></tr> <tr><td>27,351.153</td><td>26,965.498</td></tr> <tr><td>27,358.912</td><td>26,970.195</td></tr> <tr><td>27,361.688</td><td>26,971.963</td></tr> <tr><td>27,372.455</td><td>26,981.430</td></tr> <tr><td>27,373.654</td><td>26,983.049</td></tr> <tr><td>27,377.914</td><td>26,981.702</td></tr> <tr><td>27,378.740</td><td>26,981.327</td></tr> <tr><td>27,381.150</td><td>26,981.504</td></tr> <tr><td>27,383.022</td><td>26,985.973</td></tr> <tr><td>27,379.215</td><td>26,987.591</td></tr> <tr><td>27,379.415</td><td>26,988.301</td></tr> <tr><td>27,385.683</td><td>26,994.936</td></tr> <tr><td>27,393.209</td><td>27,004.604</td></tr> <tr><td>27,398.341</td><td>27,012.101</td></tr> <tr><td>27,400.033</td><td>27,015.329</td></tr> <tr><td>27,413.454</td><td>27,014.838</td></tr> <tr><td>27,428.445</td><td>27,041.817</td></tr> <tr><td>27,431.563</td><td>27,080.573</td></tr> <tr><td>27,464.607</td><td>27,140.062</td></tr> </tbody> </table>	<i>Northing</i>	<i>Easting</i>	27,288.561	26,954.409	27,315.175	26,954.984	27,318.082	26,954.964	27,337.162	26,963.051	27,351.153	26,965.498	27,358.912	26,970.195	27,361.688	26,971.963	27,372.455	26,981.430	27,373.654	26,983.049	27,377.914	26,981.702	27,378.740	26,981.327	27,381.150	26,981.504	27,383.022	26,985.973	27,379.215	26,987.591	27,379.415	26,988.301	27,385.683	26,994.936	27,393.209	27,004.604	27,398.341	27,012.101	27,400.033	27,015.329	27,413.454	27,014.838	27,428.445	27,041.817	27,431.563	27,080.573	27,464.607	27,140.062
<i>Northing</i>	<i>Easting</i>																																																
27,288.561	26,954.409																																																
27,315.175	26,954.984																																																
27,318.082	26,954.964																																																
27,337.162	26,963.051																																																
27,351.153	26,965.498																																																
27,358.912	26,970.195																																																
27,361.688	26,971.963																																																
27,372.455	26,981.430																																																
27,373.654	26,983.049																																																
27,377.914	26,981.702																																																
27,378.740	26,981.327																																																
27,381.150	26,981.504																																																
27,383.022	26,985.973																																																
27,379.215	26,987.591																																																
27,379.415	26,988.301																																																
27,385.683	26,994.936																																																
27,393.209	27,004.604																																																
27,398.341	27,012.101																																																
27,400.033	27,015.329																																																
27,413.454	27,014.838																																																
27,428.445	27,041.817																																																
27,431.563	27,080.573																																																
27,464.607	27,140.062																																																

THE SCHEDULE — *continued*

<i>First column</i>	<i>Second column</i>	
The Authority	Protected Place	
	27,468.036	27,138.109
	27,468.228	27,138.316
	27,469.051	27,137.767
	27,560.185	27,301.680
	27,600.507	27,283.438
	27,629.183	27,316.940
	27,613.965	27,329.420
	27,639.169	27,359.872
	27,654.806	27,346.576
	27,661.056	27,353.573
	27,662.665	27,353.236
	27,665.939	27,350.309
	27,667.169	27,351.686
	27,675.586	27,339.379
	27,678.822	27,334.349
	27,685.652	27,323.978
	27,693.994	27,314.921
	27,697.606	27,311.572
	27,706.728	27,313.336
	27,720.638	27,319.210
	27,725.603	27,322.394
	27,732.500	27,328.193
	27,740.425	27,336.280
	27,754.637	27,351.036
	27,774.702	27,371.864
	27,788.815	27,386.922
	27,798.287	27,394.565

Protected Places (Consolidation)

p. 56 1993 Ed.]

Order

[CAP. 256, O 4

THE SCHEDULE — *continued*

<i>First column</i>		<i>Second column</i>
The Authority		Protected Place
	27,809.373	27,399.588
	27,821.365	27,401.671
	27,833.495	27,400.681
	27,838.901	27,404.912
	27,866.770	27,437.288
	27,876.639	27,445.861
	27,884.427	27,451.484
	27,911.673	27,469.999
	27,929.623	27,486.251
	27,970.834	27,522.963
	27,993.227	27,544.716
	28,016.965	27,570.518
	28,034.198	27,589.873
	28,084.594	27,644.829
	28,097.615	27,660.711
	28,105.347	27,670.773
	28,120.318	27,696.919
	28,137.003	27,715.711
	28,149.812	27,727.424
	28,165.873	27,746.083
	28,168.250	27,751.162
	28,169.435	27,752.830
	28,177.733	27,758.767
	28,199.879	27,786.439
	28,200.750	27,787.858
	28,207.214	27,795.396
	28,209.233	27,798.145

THE SCHEDULE — *continued*

<i>First column</i>		<i>Second column</i>
The Authority		Protected Place
	28,244.092	27,842.131
	28,256.447	27,862.379
	28,260.953	27,866.487
	28,269.949	27,876.876
	28,277.875	27,888.550
	28,271.185	27,896.661
	28,251.772	27,920.335
	28,254.900	27,923.267
	28,237.421	27,944.783
	28,224.528	27,952.073
	28,216.033	27,961.828
	28,217.055	27,981.487
	28,217.382	27,988.546
	28,219.238	28,041.733
	28,293.862	28,039.157
	28,296.737	28,123.789
	28,292.988	28,123.971
	28,293.382	28,134.752
	28,293.826	28,147.079
	28,293.173	28,147.103
	28,293.181	28,148.450
	28,293.888	28,148.515
	28,294.433	28,162.779
	28,295.205	28,180.232
	28,295.388	28,183.873
	28,295.663	28,188.835
	28,296.103	28,195.700

THE SCHEDULE — *continued*

<i>First column</i>		<i>Second column</i>
The Authority		Protected Place
	28,296.384	28,199.704
	28,297.097	28,209.756
	28,297.371	28,216.992
	28,297.719	28,225.824
	28,296.491	28,228.070
	28,297.177	28,237.342
	28,295.977	28,238.054
	28,294.545	28,238.756
	28,292.492	28,239.203
	28,290.449	28,239.461
	28,280.507	28,239.855
	28,279.301	28,242.334
	28,277.559	28,244.773
	28,275.173	28,246.566
	28,272.261	28,247.480
	28,251.124	28,248.225
	28,251.192	28,253.853
	28,241.668	28,254.206
	28,206.440	28,255.380
	28,213.594	28,446.423
	28,214.010	28,447.397
	28,214.038	28,448.623
	28,213.688	28,449.334
	28,213.870	28,454.811
	28,214.442	28,454.787
	28,214.493	28,456.136
	28,213.919	28,456.155

THE SCHEDULE — *continued*

<i>First column</i>	<i>Second column</i>	
The Authority	Protected Place	
	28,220.074	28,625.930
	28,220.274	28,625.923
	28,220.316	28,627.268
	28,220.099	28,627.276
	28,220.351	28,633.383
	28,222.773	28,695.635
	28,236.930	28,695.411
	28,260.479	28,694.641
	28,266.305	28,688.483
	28,290.861	28,687.516
	28,292.144	28,716.138
	28,281.504	28,716.614
	28,281.578	28,719.446
	28,276.450	28,719.571
	28,276.695	28,728.098
	28,278.482	28,760.958
	28,279.741	28,770.186
	28,283.471	28,781.374
	28,291.727	28,796.185
	28,293.378	28,798.955
	28,294.678	28,801.702
	28,304.683	28,830.095
	28,143.519	28,902.777
	28,143.519	28,907.018
	28,143.793	28,911.505
	28,144.630	28,915.387
	28,146.665	28,918.799

THE SCHEDULE — *continued*

<i>First column</i>		<i>Second column</i>
The Authority		Protected Place
	28,149.861	28,922.202
	28,153.709	28,924.848
	28,158.030	28,926.615
	28,188.743	28,912.941
	28,203.801	28,947.700
	28,176.248	28,960.033
	28,179.347	28,966.446
	28,182.609	28,973.196
	28,189.526	28,988.965
	28,190.334	28,990.765
	28,187.192	28,992.133
	28,162.044	29,003.283
	28,158.511	29,007.277
	28,156.829	29,009.839
	28,155.694	29,012.622
	28,155.289	29,015.499
	28,155.275	29,021.272
	28,157.888	29,028.168
	28,160.179	29,030.537
	28,182.444	29,052.492
	28,206.369	29,075.512
	28,309.629	29,175.792
	28,310.138	29,176.432
	28,314.891	29,185.470
	28,319.268	29,193.790
	28,322.874	29,204.336
	28,323.369	29,221.990

THE SCHEDULE — *continued*

<i>First column</i>	<i>Second column</i>
The Authority	Protected Place
	28,323.790
	29,236.872
	28,324.192
	29,251.881
	28,324.923
	29,279.653
	28,325.327
	29,296.683
	28,323.684
	29,308.619
	28,321.863
	29,321.685
	28,320.386
	29,332.813
	28,318.867
	29,344.285
	28,317.647
	29,353.526
	28,316.331
	29,362.723
	28,312.790
	29,398.566
	28,312.187
	29,404.489
	28,309.771
	29,415.319
	28,307.354
	29,426.153
	28,304.939
	29,436.987
	28,298.788
	29,436.506
	28,299.193
	29,432.366
	28,282.821
	29,418.139
	28,228.771
	29,478.082
	28,234.171
	29,483.259
	28,253.850
	29,501.045
	28,277.983
	29,474.291
	28,297.214
	29,452.972
	28,298.156
	29,446.858
	28,299.942
	29,444.978
	28,303.939
	29,444.453
	28,301.832
	29,456.225

THE SCHEDULE — *continued*

<i>First column</i>		<i>Second column</i>
The Authority		Protected Place
	28,299.941	29,467.512
	28,298.479	29,476.076
	28,296.616	29,487.504
	28,295.294	29,495.946
	28,293.933	29,504.895
	28,292.127	29,516.752
	28,290.768	29,525.688
	28,289.633	29,534.551
	28,288.583	29,546.403
	28,288.035	29,555.331
	28,287.783	29,564.309
	28,287.909	29,576.266
	28,288.240	29,585.294
	28,288.778	29,594.177
	28,289.957	29,606.242
	28,291.121	29,615.187
	28,292.530	29,624.104
	28,294.830	29,635.814
	28,296.857	29,644.655
	28,299.093	29,653.331
	28,302.434	29,664.741
	28,305.202	29,673.364
	28,308.153	29,681.860
	28,311.909	29,691.227
	28,316.751	29,702.180
	28,320.679	29,710.418
	28,324.761	29,718.301

THE SCHEDULE — *continued*

<i>First column</i>	<i>Second column</i>
The Authority	Protected Place
28,330.347	29,728.768
28,334.631	29,736.812
28,339.071	29,744.630
28,344.998	29,755.060
28,349.449	29,762.919
28,353.847	29,770.663
28,359.742	29,781.089
28,364.208	29,788.978
28,368.630	29,796.768
28,374.561	29,807.247
28,379.015	29,815.090
28,383.481	29,822.974
28,389.232	29,833.618
28,393.251	29,841.690
28,396.958	29,849.819
28,401.728	29,860.845
28,405.176	29,869.131
28,408.404	29,877.492
28,411.556	29,886.317
28,415.369	29,897.567
28,417.918	29,906.246
28,420.767	29,916.774
28,420.658	29,917.023
28,382.205	30,005.821
28,381.488	30,005.599
28,370.914	30,029.930
27,341.159	30,031.019

Protected Places (Consolidation)

p. 64 1993 Ed.]

Order

[CAP. 256, O 4

THE SCHEDULE — *continued*

<i>First column</i>		<i>Second column</i>
The Authority		Protected Place
	27,341.122	29,995.624
	27,341.447	29,991.642
	27,285.471	29,930.011
	27,112.430	30,086.125
	27,111.065	30,086.485
	27,110.223	30,086.136
	27,109.371	30,085.124
	27,110.173	30,084.349
	27,030.637	29,996.286
	27,031.421	29,995.579
	27,031.529	29,995.161
	27,030.853	29,994.363
	27,029.943	29,991.865
	27,029.860	29,988.866
	27,031.261	29,986.731
	27,033.963	29,984.310
	27,033.990	29,983.887
	27,288.386	29,754.485
	27,532.704	29,533.896
	27,701.845	29,381.276
	27,705.730	29,377.742
	27,569.127	29,226.270
	27,569.506	29,225.869
	27,563.658	29,219.389
	27,277.850	29,446.321
	27,220.347	29,491.732
	27,218.182	29,492.958

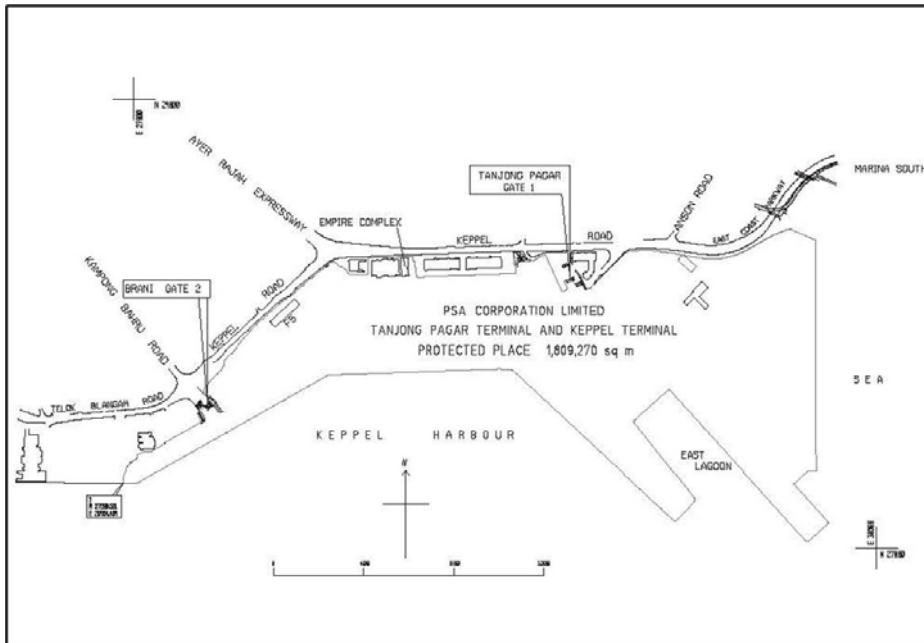
THE SCHEDULE — *continued*

<i>First column</i>	<i>Second column</i>	
The Authority	Protected Place	
	27,215.737	29,493.562
	27,213.356	29,493.486
	27,210.806	29,492.610
	27,210.631	29,492.835
	27,122.366	29,410.332
	27,122.578	29,410.121
	27,121.056	29,407.724
	27,120.565	29,405.151
	27,121.014	29,402.551
	27,122.474	29,400.290
	27,176.869	29,341.473
	27,792.537	28,681.009
	27,793.534	28,673.972
	27,794.609	28,664.939
	27,795.666	28,652.547
	27,796.732	28,639.004
	27,797.102	28,625.791
	27,796.841	28,612.939
	27,769.631	27,860.065
	27,764.032	27,854.695
	27,720.028	27,776.643
	27,657.202	27,665.809
	27,652.809	27,657.386
	27,652.547	27,657.533
	27,512.874	27,411.859
	27,404.963	27,220.955
	27,293.460	27,024.529

THE SCHEDULE — *continued*

<i>First column</i>	<i>Second column</i>
The Authority	Protected Place
	27,292.603
	27,022.266
	27,288.662
	27,007.212
	27,288.344
	27,004.825
	27,288.511
	26,975.614

to the point of commencement and are delineated in the Plan set out below.



Director (Corporate Development), PSA Corporation Limited

2. Deleted by S 620/2009 wef 15/12/2009.

Senior Terminals Security Manager, PSA Corporation Limited

3. SEMBAWANG WHARVES.

All that area occupied by “SEMBAWANG WHARVES” containing an area of approximately 312,500 square metres and bounded by Fiji Road, Jamaica Road,

THE SCHEDULE — *continued*

First column

Second column

The Authority

Protected Place

Sembawang Shipyard, H M Dockyard, Stores Road, Stores Basin, Sembawang Park and Deptford Road.

The boundary commences at the westernmost corner of the aforesaid “SEMBAWANG WHARVES” which point bears the co-ordinates North 49,342.274 metres and East 27,216.569 metres of the Singapore Land Authority SVY 21 Datum and runs approximately as follows:

<i>Northing</i>	<i>Easting</i>
49,342.274	27,216.569
49,383.623	27,239.331
49,386.861	27,240.369
49,406.042	27,251.743
49,408.954	27,256.526
49,439.994	27,314.658
49,470.282	27,370.933
49,478.734	27,386.622
49,485.217	27,398.838
49,490.240	27,408.064
49,489.903	27,407.978
49,486.849	27,412.203
49,495.094	27,426.829
49,506.771	27,447.666
49,522.803	27,476.531
49,558.642	27,542.619
49,584.126	27,589.381
49,563.317	27,625.639

THE SCHEDULE — *continued*

<i>First column</i>		<i>Second column</i>
The Authority		Protected Place
	49,545.591	27,656.885
	49,524.579	27,693.334
	49,512.606	27,714.162
	49,506.148	27,720.383
	49,498.448	27,723.726
	49,490.251	27,723.287
	49,367.320	27,654.402
	49,327.834	27,633.993
	49,324.491	27,634.413
	49,324.480	27,634.615
	49,321.503	27,639.675
	49,319.456	27,642.940
	49,318.621	27,644.951
	49,306.532	27,666.063
	49,309.041	27,667.707
	49,362.714	27,698.153
	49,352.393	27,716.567
	49,345.243	27,729.151
	49,337.805	27,742.036
	49,336.487	27,741.436
	49,335.211	27,742.644
	49,332.835	27,746.785
	49,335.447	27,748.622
	49,328.286	27,761.364
	49,323.858	27,769.138
	49,299.424	27,811.861
	49,298.193	27,814.483

THE SCHEDULE — *continued*

<i>First column</i>		<i>Second column</i>
The Authority		Protected Place
	49,298.921	27,816.904
	49,294.152	27,826.134
	49,418.344	27,896.971
	49,436.914	27,907.607
	49,432.845	27,915.070
	49,428.228	27,923.827
	49,409.221	27,957.193
	49,402.618	27,953.432
	49,397.173	27,962.990
	49,403.777	27,966.751
	49,394.125	27,983.695
	49,331.379	27,947.978
	49,310.869	27,936.303
	49,270.023	27,913.052
	49,144.539	27,840.798
	49,135.868	27,855.999
	49,120.928	27,847.477
	49,060.531	27,953.363
	49,204.882	28,035.533
	49,490.843	28,198.423
	49,523.064	28,216.814
	49,523.813	28,217.620
	49,524.347	28,218.694
	49,534.917	28,277.248
	49,532.348	28,277.649
	49,531.656	28,282.298
	49,531.189	28,292.387

THE SCHEDULE — *continued*

<i>First column</i>		<i>Second column</i>
The Authority		Protected Place
	49,530.623	28,302.471
	49,528,379	28,312.319
	49,526.356	28,322.520
	49,524.826	28,332.200
	49,524.009	28,341.565
	49,512.554	28,332.037
	49,505.888	28,331.358
	49,502.035	28,329.033
	49,494.968	28,331.228
	49,464.222	28,319.241
	49,459.292	28,316.802
	49,456.660	28,316.198
	49,443.757	28,311.595
	49,411.690	28,318.489
	49,391.358	28,325.782
	49,320.824	28,294.648
	49,287.256	28,262.325
	49,216.070	28,194.101
	49,206.827	28,190.555
	49,190.406	28,184.503
	49,170.057	28,176.685
	49,119.571	28,157.523
	49,039.203	28,127.767
	49,038.474	28,125.064
	49,034.967	28,121.225
	49,019.994	28,114.291
	48,997.663	28,103.972

THE SCHEDULE — *continued*

<i>First column</i>	<i>Second column</i>
The Authority	Protected Place
	48,986.153
	28,096.359
	48,946.197
	28,086.729
	48,891.087
	28,037.195
	48,890.310
	28,015.309
	48,890.263
	28,012.609
	48,918.562
	27,977.621
	48,958.734
	27,896.637
	48,959.885
	27,894.195
	48,960.848
	27,891.672
	48,968.830
	27,868.403
	49,031.306
	27,761.988
	49,089.903
	27,718.284
	49,093.244
	27,712.477
	49,065.978
	27,696.904
	49,078.106
	27,676.425
	49,094.024
	27,685.852
	49,101.529
	27,688.623
	49,107.770
	27,687.208
	49,125.633
	27,656.414
	49,127.151
	27,654.182
	49,130.745
	27,650.018
	49,132.107
	27,647.687
	49,132.977
	27,645.131
	49,133.531
	27,642.488
	49,144.421
	27,623.487
	49,151.382
	27,611.341
	49,146.732
	27,605.203

THE SCHEDULE — *continued*

<i>First column</i>	<i>Second column</i>
The Authority	Protected Place
49,114.757	27,587.394
49,116.313	27,585.187
49,154.850	27,517.487
49,180.186	27,473.456
49,191.550	27,463.665
49,195.567	27,459.344
49,200.601	27,451.763
49,203.512	27,443.565
49,207.536	27,431.836
49,214.886	27,419.105
49,236.372	27,382.089
49,258.798	27,374.738
49,299.275	27,306.430
49,318.316	27,273.429
49,332.545	27,235.404

to the point of commencement and are delineated in the Plan set out below.

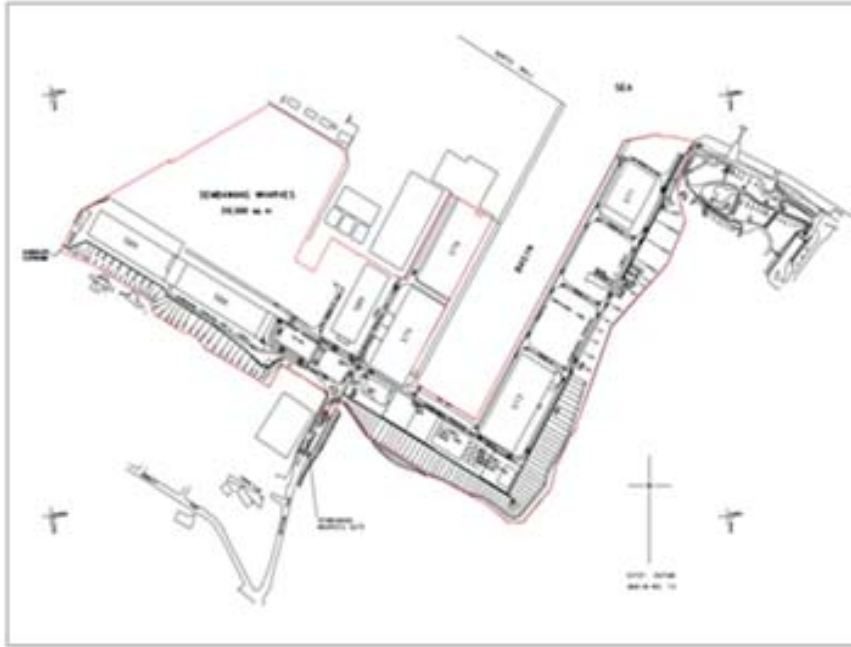
THE SCHEDULE — *continued*

First column

Second column

The Authority

Protected Place



Senior Terminals Security 4. BRANI TERMINAL.
Manager, PSA Corporation
Limited

All that area occupied by “BRANI TERMINAL” containing an area of approximately 861,550 square metres and bounded by Keppel Channel and Selat Sengkir.

The boundary commences at the north-westernmost corner of the aforesaid “BRANI TERMINAL” which point’s co-ordinates are North 27,282.754 metres and East 26,954.037 metres of the Singapore Land Authority SVY 21 Datum and runs approximately as follows:

<i>Northing</i>	<i>Easting</i>
27,282.671	26,974.813
27,143.905	26,971.892

Protected Places (Consolidation)

THE SCHEDULE — *continued*

<i>First column</i>		<i>Second column</i>
The Authority		Protected Place
	27,098.134	26,973.362
	27,054.962	26,979.408
	27,004.854	26,992.499
	26,965.480	27,007.922
	27,346.614	27,676.713
	27,348.670	27,684.214
	27,372.258	28,306.732
	27,367.908	28,318.637
	26,715.732	29,018.546
	26,711.540	29,018.687
	26,703.631	29,011.312
	26,568.339	28,738.715
	26,625.258	28,716.742
	26,640.101	28,711.007
	26,649.390	28,700.920
	26,510.506	28,410.419
	26,510.031	28,409.534
	26,684.759	28,222.272
	26,734.009	28,268.294
	26,843.412	28,150.950
	26,858.152	28,152.300
	26,879.854	28,152.007
	26,906.040	28,092.816
	26,918.169	28,079.219
	26,980.779	28,032.001
	27,001.006	28,014.544
	27,003.125	28,012.535

THE SCHEDULE — *continued*

<i>First column</i>		<i>Second column</i>
The Authority		Protected Place
	27,005.077	28,010.363
	27,006.413	28,007.876
	27,007.614	28,005.101
	27,009.514	27,999.595
	27,010.299	27,996.778
	27,012.020	27,987.919
	27,012.625	27,984.956
	27,015.805	27,979.841
	27,017.559	27,977.380
	27,019.459	27,975.031
	27,021.509	27,972.952
	27,023.786	27,971.127
	27,028.521	27,967.577
	27,030.889	27,966.053
	27,035.134	27,963.379
	27,047.805	27,955.510
	27,060.791	27,947.970
	27,071.501	27,942.308
	27,087.484	27,933.997
	27,098.340	27,928.621
	27,114.201	27,920.078
	27,138.605	27,903.120
	27,159.632	27,882.831
	27,192.922	27,838.645
	27,194.952	27,727.938
	27,208.999	27,709.952
	27,195.263	27,699.415

Protected Places (Consolidation)

THE SCHEDULE — *continued*

<i>First column</i>	<i>Second column</i>	
The Authority	Protected Place	
	27,170.613	27,681.265
	27,172.023	27,679.296
	27,168.680	27,676.734
	27,167.810	27,673.945
	27,155.978	27,662.569
	27,161.009	27,652.201
	27,161.403	27,649.708
	27,147.469	27,642.903
	27,135.424	27,627.167
	27,118.144	27,632.846
	27,112.386	27,633.479
	27,109.451	27,631.953
	27,059.091	27,639.291
	26,985.829	27,648.927
	26,947.180	27,654.087
	26,947.299	27,656.260
	26,927.086	27,658.074
	26,916.067	27,662.260
	26,920.548	27,673.584
	26,920.189	27,683.253
	26,914.099	27,685.491
	26,913.937	27,687.058
	26,913.491	27,688.569
	26,912.139	27,691.221
	26,910.730	27,693.843
	26,909.217	27,696.407
	26,906.532	27,700.359

Protected Places (Consolidation)

THE SCHEDULE — *continued*

<i>First column</i>		<i>Second column</i>
The Authority		Protected Place
	26,903.935	27,703.505
	26,899.559	27,707.726
	26,841.036	27,749.978
	26,786.606	27,744.569
	26,784.233	27,751.868
	26,782.890	27,751.460
	26,783.129	27,750.671
	26,778.261	27,749.137
	26,778.041	27,749.881
	26,764.045	27,745.374
	26,764.829	27,742.870
	26,763.810	27,740.898
	26,761.233	27,740.080
	26,766.284	27,724.136
	26,753.655	27,719.951
	26,751.593	27,720.684
	26,749.897	27,720.069
	26,627.574	27,676.337
	26,666.293	27,575.810
	26,594.677	27,548.619
	26,593.337	27,548.991
	26,576.685	27,542.690
	26,599.144	27,484.123
	26,616.362	27,490.598
	26,624.662	27,488.309
	26,631.078	27,481.968
	26,636.879	27,472.832

Protected Places (Consolidation)

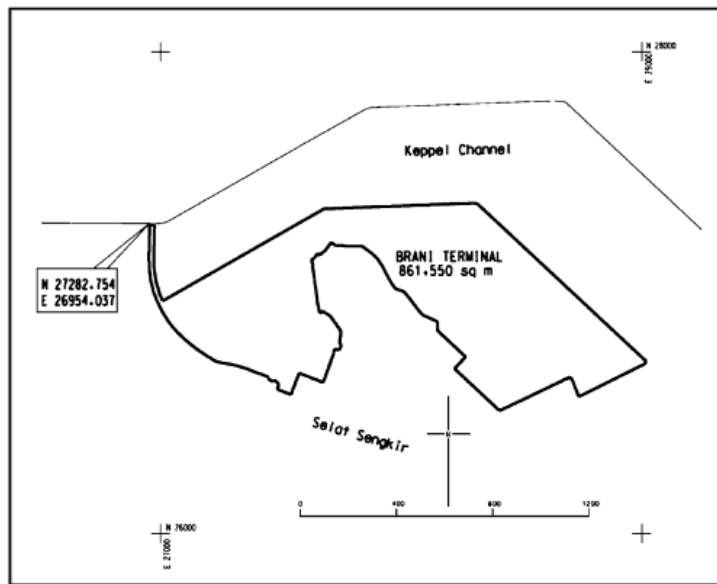
THE SCHEDULE — *continued*

<i>First column</i>		<i>Second column</i>
The Authority		Protected Place
	26,636.573	27,470.327
	26,631.044	27,467.291
	26,642.331	27,446.767
	26,647.921	27,449.867
	26,648.975	27,448.635
	26,653.155	27,440.078
	26,660.638	27,421.505
	26,670.114	27,393.015
	26,685.407	27,356.027
	26,691.076	27,336.822
	26,696.656	27,317.590
	26,701.472	27,298.462
	26,704.458	27,278.560
	26,707.946	27,258.842
	26,712.614	27,239.369
	26,714.657	27,229.759
	26,740.345	27,188.240
	26,760.431	27,158.096
	26,782.017	27,129.633
	26,808.932	27,097.493
	26,836.945	27,068.912
	26,858.297	27,049.555
	26,883.156	27,030.838
	26,923.059	27,005.782
	26,955.682	26,989.603
	26,998.826	26,971.958
	27,049.137	26,959.172

THE SCHEDULE — *continued*

<i>First column</i>	<i>Second column</i>	
The Authority	Protected Place	
	27,097.206	26,952.664
	27,144.382	26,951.034
	27,282.754	26,954.037

to the point of commencement and are delineated in the Plan set out below.



Senior Terminals Security Manager, PSA Corporation Limited

5. PSA Corporation Limited (KEPPEL DISTRIPARK).

All that area occupied by “ PSA Corporation Limited (KEPPEL DISTRIPARK) — PROTECTED PLACE” containing an area of approximately 170, 769 square metres and bounded by Keppel Road, Kampong Bahru Road and Ayer Rajah Expressway.

The boundary commences at the northern-most corner of the aforesaid “ PSA Corporation Limited (KEPPEL DISTRIPARK) — PROTECTED PLACE” which point’s adopted

THE SCHEDULE — *continued*

<i>First column</i>	<i>Second column</i>																																												
The Authority	Protected Place																																												
	co-ordinates are North 28,573.4 metres and East 27,517.9 metres. The point of commencement is 1,426.6 metres south and 2,482.1 metres west of the Survey Department origin (30,000 metres North, 30,000 metres East) of co-ordinates and runs approximately as under:																																												
	<table border="0"> <thead> <tr> <th style="text-align: left;"><i>Bearing.</i></th> <th style="text-align: left;"><i>Distance in metres.</i></th> </tr> </thead> <tbody> <tr><td>133° 02'</td><td>15.0</td></tr> <tr><td>133° 36'</td><td>255.0</td></tr> <tr><td>133° 55'</td><td>50.0</td></tr> <tr><td>134° 01'</td><td>58.8</td></tr> <tr><td>180° 34'</td><td>5.5</td></tr> <tr><td>196° 38'</td><td>10.9</td></tr> <tr><td>220° 05'</td><td>18.9</td></tr> <tr><td>218° 40'</td><td>22.5</td></tr> <tr><td>227° 17'</td><td>73.6</td></tr> <tr><td>227° 16'</td><td>160.3</td></tr> <tr><td>227° 28'</td><td>78.6</td></tr> <tr><td>228° 33'</td><td>220.0</td></tr> <tr><td>228° 35'</td><td>136.7</td></tr> <tr><td>316° 11'</td><td>49.3</td></tr> <tr><td>331° 42'</td><td>23.3</td></tr> <tr><td>344° 43'</td><td>85.1</td></tr> <tr><td>356° 16'</td><td>63.5</td></tr> <tr><td>09° 35'</td><td>58.5</td></tr> <tr><td>348° 23'</td><td>23.8</td></tr> <tr><td>299° 04'</td><td>20.2</td></tr> <tr><td>339° 49'</td><td>7.3</td></tr> </tbody> </table>	<i>Bearing.</i>	<i>Distance in metres.</i>	133° 02'	15.0	133° 36'	255.0	133° 55'	50.0	134° 01'	58.8	180° 34'	5.5	196° 38'	10.9	220° 05'	18.9	218° 40'	22.5	227° 17'	73.6	227° 16'	160.3	227° 28'	78.6	228° 33'	220.0	228° 35'	136.7	316° 11'	49.3	331° 42'	23.3	344° 43'	85.1	356° 16'	63.5	09° 35'	58.5	348° 23'	23.8	299° 04'	20.2	339° 49'	7.3
<i>Bearing.</i>	<i>Distance in metres.</i>																																												
133° 02'	15.0																																												
133° 36'	255.0																																												
133° 55'	50.0																																												
134° 01'	58.8																																												
180° 34'	5.5																																												
196° 38'	10.9																																												
220° 05'	18.9																																												
218° 40'	22.5																																												
227° 17'	73.6																																												
227° 16'	160.3																																												
227° 28'	78.6																																												
228° 33'	220.0																																												
228° 35'	136.7																																												
316° 11'	49.3																																												
331° 42'	23.3																																												
344° 43'	85.1																																												
356° 16'	63.5																																												
09° 35'	58.5																																												
348° 23'	23.8																																												
299° 04'	20.2																																												
339° 49'	7.3																																												

THE SCHEDULE — *continued*

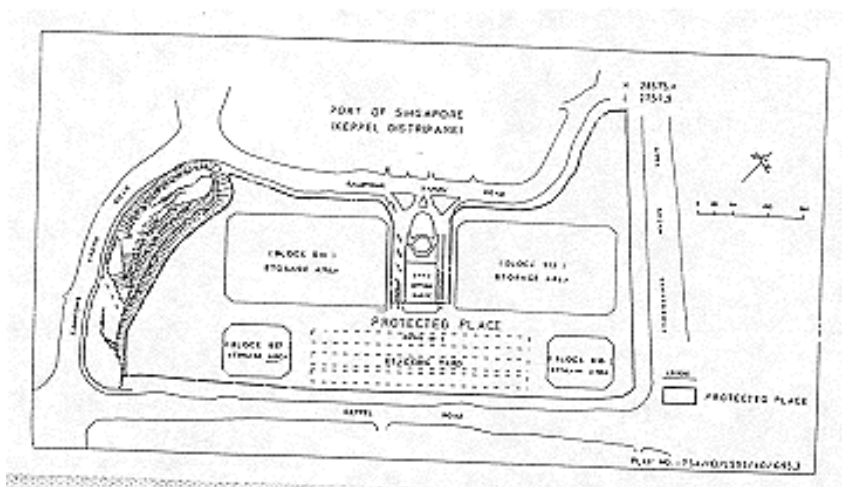
<i>First column</i>	<i>Second column</i>
The Authority	Protected Place
65° 31'	33.9
62° 39'	27.7
65° 53'	33.1
55° 38'	11.1
48° 36'	11.3
43° 23'	27.8
49° 03'	54.5
49° 31'	17.7
78° 01'	10.9
104° 15'	16.7
123° 37'	13.0
137° 27'	103.4
47° 14'	81.7
317° 19'	108.3
337° 02'	9.6
354° 16'	11.9
22° 00'	9.9
48° 23'	61.0
43° 46'	12.1
37° 45'	11.1
47° 07'	7.8
21° 46'	32.1
357° 57'	31.8
353° 40'	24.3
335° 06'	28.4
343° 23'	35.3
343° 28'	8.2

THE SCHEDULE — *continued*

<i>First column</i>	<i>Second column</i>
The Authority	Protected Place

01° 04'	12.9
25° 23'	13.5
41° 49'	19.9

to the point of commencement and are delineated in the Plan set out hereunder.



Senior Terminals
Security Manager, PSA
Corporation Limited

6. PASIR PANJANG TERMINAL.

All that area occupied by “PASIR PANJANG TERMINAL” containing an area of approximately 3,420,874 square metres and bounded by West Coast Ferry Road, Harbour Drive and East Jurong Fairway.

The boundary commences at the north-west corner of the aforesaid “PASIR PANJANG TERMINAL” which point bears the co-ordinates North 30,310.960 metres and East 19,958.452 metres of the Singapore Land Authority SVY 21 Datum and runs approximately as follows:

THE SCHEDULE — *continued*

<i>First column</i>	<i>Second column</i>	
The Authority	Protected Place	
	<i>Northing</i>	<i>Easting</i>
	30,310.960	19,958.452
	30,379.671	19,999.428
	30,381.413	20,006.311
	30,342.539	20,071.497
	30,339.635	20,091.384
	30,351.646	20,107.502
	30,546.550	20,223.557
	30,551.091	20,240.407
	29,906.306	21,320.624
	29,869.758	21,365.527
	29,821.876	21,398.075
	29,817.741	21,400.081
	29,785.465	21,421.246
	29,759.801	21,450.075
	29,733.778	21,493.712
	29,729.466	21,492.073
	29,727.543	21,495.291
	29,689.185	21,472.434
	29,682.480	21,476.318
	29,662.431	21,480.608
	29,654.066	21,482.524
	29,653.109	21,482.220
	29,650.346	21,481.723
	29,650.450	21,482.235
	29,631.330	21,486.135
	29,630.348	21,485.807

Protected Places (Consolidation)

THE SCHEDULE — *continued*

<i>First column</i>		<i>Second column</i>
The Authority		Protected Place
	29,624.709	21,487.028
	29,622.976	21,483.066
	29,617.831	21,487.275
	29,613.691	21,492.476
	29,611.201	21,498.090
	29,610.071	21,504.127
	29,610.517	21,509.957
	29,612.301	21,515.525
	29,615.343	21,520.407
	29,617.460	21,522.826
	29,622.191	21,526.419
	29,652.877	21,544.645
	29,675.925	21,558.468
	29,676.280	21,558.676
	29,665.669	21,576.687
	29,665.949	21,576.976
	29,664.318	21,579.712
	29,670.700	21,588.051
	29,671.148	21,598.540
	29,534.343	21,827.941
	29,531.511	21,826.251
	29,530.164	21,820.918
	29,533.076	21,820.182
	29,530.381	21,809.517
	29,539.109	21,807.310
	29,537.738	21,801.880
	29,540.650	21,801.144

THE SCHEDULE — *continued*

<i>First column</i>		<i>Second column</i>
The Authority		Protected Place
	29,537.930	21,790.382
	29,539.969	21,789.866
	29,537.004	21,778.135
	29,563.642	21,732.080
	29,560.167	21,710.639
	29,556.630	21,696.631
	29,559.497	21,695.661
	29,563.525	21,691.779
	29,563.137	21,691.541
	29,566.543	21,685.904
	29,571.593	21,677.302
	29,577.882	21,666.673
	29,577.105	21,663.675
	29,576.812	21,663.745
	29,572.225	21,645.593
	29,578.306	21,644.062
	29,577.489	21,640.817
	29,536.871	21,650.882
	29,522.222	21,651.559
	29,513.636	21,654.323
	29,510.741	21,656.273
	29,507.470	21,658.212
	29,407.108	21,830.001
	29,411.735	21,832.843
	29,408.390	21,838.506
	29,403.955	21,835.785
	29,402.728	21,837.875

Protected Places (Consolidation)

THE SCHEDULE — *continued*

<i>First column</i>		<i>Second column</i>
The Authority		Protected Place
	29,405.950	21,850.841
	29,413.074	21,855.226
	29,412.472	21,856.315
	29,411.420	21,858.059
	29,408.958	21,862.754
	29,407.754	21,864.930
	29,405.016	21,863.329
	29,400.361	21,871.056
	29,387.562	21,863.290
	29,294.250	22,016.307
	29,293.755	22,021.456
	29,294.024	22,023.880
	29,294.690	22,026.293
	29,295.784	22,028.550
	29,297.252	22,030.559
	29,299.254	22,032.451
	29,300.607	22,033.431
	29,369.985	22,074.900
	29,371.123	22,075.500
	29,373.366	22,076.360
	29,375.750	22,076.835
	29,378.156	22,076.943
	29,379.047	22,076.876
	29,380.781	22,076.638
	29,346.487	22,134.127
	29,345.773	22,133.627
	29,344.717	22,134.930

THE SCHEDULE — *continued*

<i>First column</i>		<i>Second column</i>
The Authority		Protected Place
	29,345.325	22,135.467
	29,336.599	22,145.544
	29,284.400	22,193.816
	29,267.055	22,209.479
	29,204.069	22,171.384
	29,209.648	22,162.115
	29,218.414	22,147.586
	29,209.270	22,141.469
	29,201.829	22,136.403
	29,224.649	22,098.086
	29,243.049	22,067.195
	29,265.630	22,029.284
	29,269.364	22,023.015
	29,290.639	21,987.317
	29,312.212	21,951.098
	29,333.126	21,916.048
	29,327.739	21,912.731
	29,300.554	21,889.125
	29,270.427	21,863.182
	29,266.683	21,865.611
	29,234.426	21,846.447
	29,204.585	21,828.657
	29,176.664	21,812.013
	29,144.503	21,792.842
	29,115.347	21,775.442
	29,057.401	21,740.932
	29,028.902	21,723.769

THE SCHEDULE — *continued*

<i>First column</i>		<i>Second column</i>
The Authority		Protected Place
	29,028.714	21,721.644
	29,028.489	21,719.292
	29,027.678	21,716.628
	29,026.134	21,714.386
	29,017.639	21,709.369
	29,016.925	21,710.628
	29,015.883	21,710.242
	29,012.160	21,716.351
	29,011.264	21,717.854
	27,859.493	21,030.855
	29,219.594	18,748.791
	29,747.865	19,063.811
	29,809.217	19,453.740
	28,973.974	20,856.100
	29,565.507	21,208.277

to the point of commencement and are delineated in the Plan set out below.

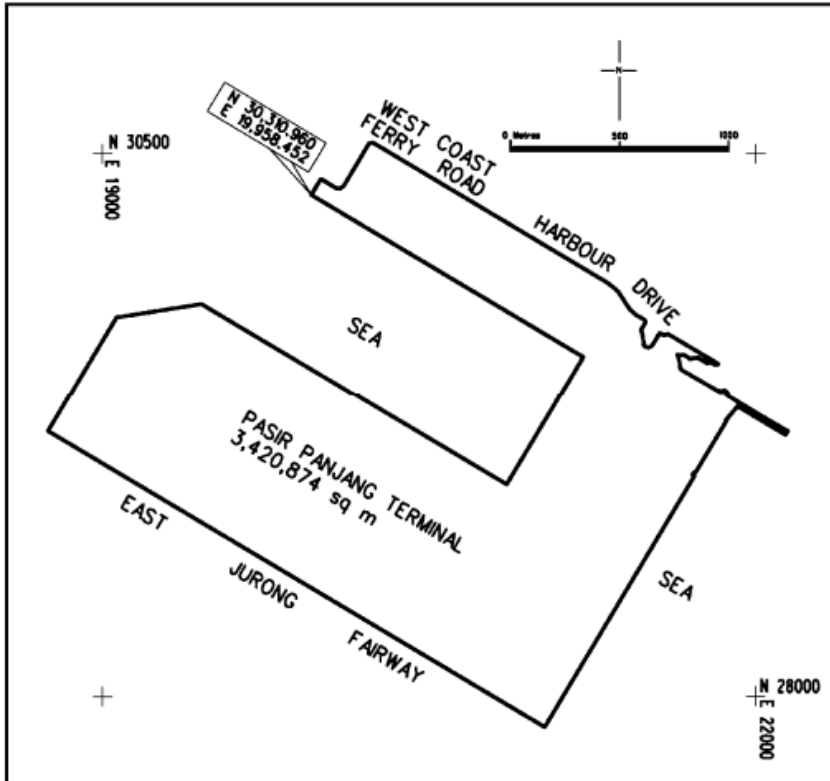
THE SCHEDULE — *continued*

First column

Second column

The Authority

Protected Place



Senior Terminal Security and Safety Manager,
PSA Corporation Limited

7. [Deleted by s 620/2009, wef 15/12/2009]

[S 486/2014 wef 24/07/2014]

[S 61/2012 wef 13/02/2012]

[S 506/93 wef 17/12/1993]

[S 40/1998 wef 23/01/1998]

[S 591/2009 wef 01/12/2009]

[S 552/2011 wef 29/09/2011]

THE SCHEDULE — *continued*

<i>First column</i>	<i>Second column</i>
The Authority	Protected Place
(10) S 580/91 [27.12.91] Marketing Director, Shell Companies (Pte.) Ltd.	SHELL INSTALLATION AT PANDAN ROAD.

All those areas comprised in PRIVATE LOT A10269 and PRIVATE LOT A10270 (also known as part of Government survey Lot 4789 Mukim No. 5 Pandan) containing areas of about 10,438.8 square metres and 51,707 square metres, respectively, and bounded approximately as follows:

Private Lot A10269

Commencing at a point which is 31,087.5 metres North and 18,286.8 metres North and 18,286.8 metres East of the Survey Department origin of coordinates (N. 30,000m, E. 30,000m) the boundaries run along successive lines of bearings and distances as under:

<i>Bearing</i>	<i>Distance in metres</i>
15° 07' 30"	213.786
285° 08' 30"	48.020
195° 09' 00"	214.992

and bounded at the shoreline by rubble wall along successive lines of bearings and distances as under:

<i>Bearing</i>	<i>Distance in metres</i>
109° 53' 21"	16.587
119° 24' 03"	14.438
105° 52' 16"	8.508
57° 45' 44"	8.552
106° 06' 34"	3.285

to the point of commencement.

THE SCHEDULE — *continued*

<i>First column</i>	<i>Second column</i>
The Authority	Protected Place

Private Lot A10270

Commencing at a point which is 31,119.9 metres North and 18,172.7 metres East of the Survey Department origin of co-ordinates (N. 30,000m E. 30,000m) the boundaries run along successive lines of bearings and distances as under:

<i>Bearing</i>	<i>Distance in metres</i>
15° 09' 00"	101.219
105° 09' 00"	43.5
15° 09' 00"	113.0
285° 09' 00"	15.208
236° 09' 00"	9.29
285° 08' 40"	24.384
15° 07' 12"	36.545
18° 41' 18"	111.696
272° 57' 10"	110.197
262° 22' 10"	11.87

and bounded at the shoreline by rubble wall along successive lines of bearings and distances as under:

211° 33' 23"	28.230
204° 59' 52"	29.610
205° 13' 08"	117.393
220° 58' 58"	45.554
188° 08' 36"	44.442
163° 56' 27"	31.635
141° 06' 13"	30.691
134° 55' 48"	16.281
122° 47' 37"	30.918

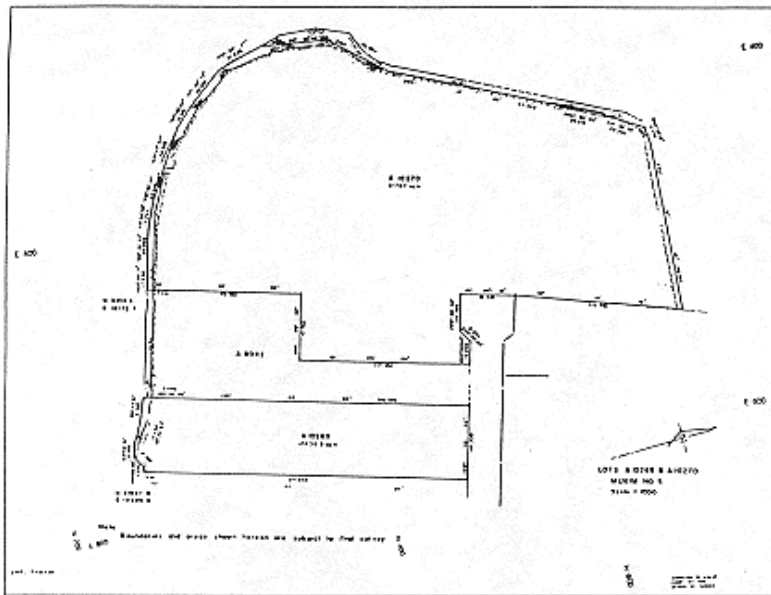
THE SCHEDULE — *continued*

<i>First column</i>	<i>Second column</i>
The Authority	Protected Place
120° 55' 01"	22.416
113° 05' 48"	17.243
106° 01' 23"	20.860
102° 09' 13"	17.634

to the point of commencement.

The boundaries of “SHELL INSTALLATION AT PANDAN ROAD” are more particularly delineated in the Plan set out hereunder.

SHELL INSTALLATION AT PANDAN ROAD



<i>First column</i>	<i>Second column</i>
The Authority	Protected Place

THE SCHEDULE — *continued*

First column

Second column

- | | |
|---|--|
| (11) S 31/92 [17.1.92]
President and Chief
Executive Officer of
Senoko Energy Pte.
Ltd. | PUBLIC UTILITIES BOARD GAS TURBINE
GENERATING PLANT AT SENOKO POWER
STATION. |
|---|--|

All that area comprised in land Lot 1985, Mukim 13 (Sembawang) at Senoko Road, surrounded by a fencing containing an area of about 23,016.0 square metres and bounded approximately as follows:

Commencing at the south-western corner of the chain link fence which point is 49,699.619 metres North and 24,377.873 metres East of the Survey Department origin of co-ordinates 30,000 metres North, 30,000 metres East, the boundaries run along successive lines of fences of bearings and distances as under:

<i>Bearing</i>	<i>Distance in metres</i>
327° 19' 50"	151.766
327° 19' 50"	3.229
58° 17' 24"	52.057
50° 19' 39"	59.920
43° 52' 09"	23.434
56° 42' 18"	11.051
147° 20' 30"	15.263
147° 20' 30"	151.834
237° 21' 27"	56.499
237° 21' 27"	88.808

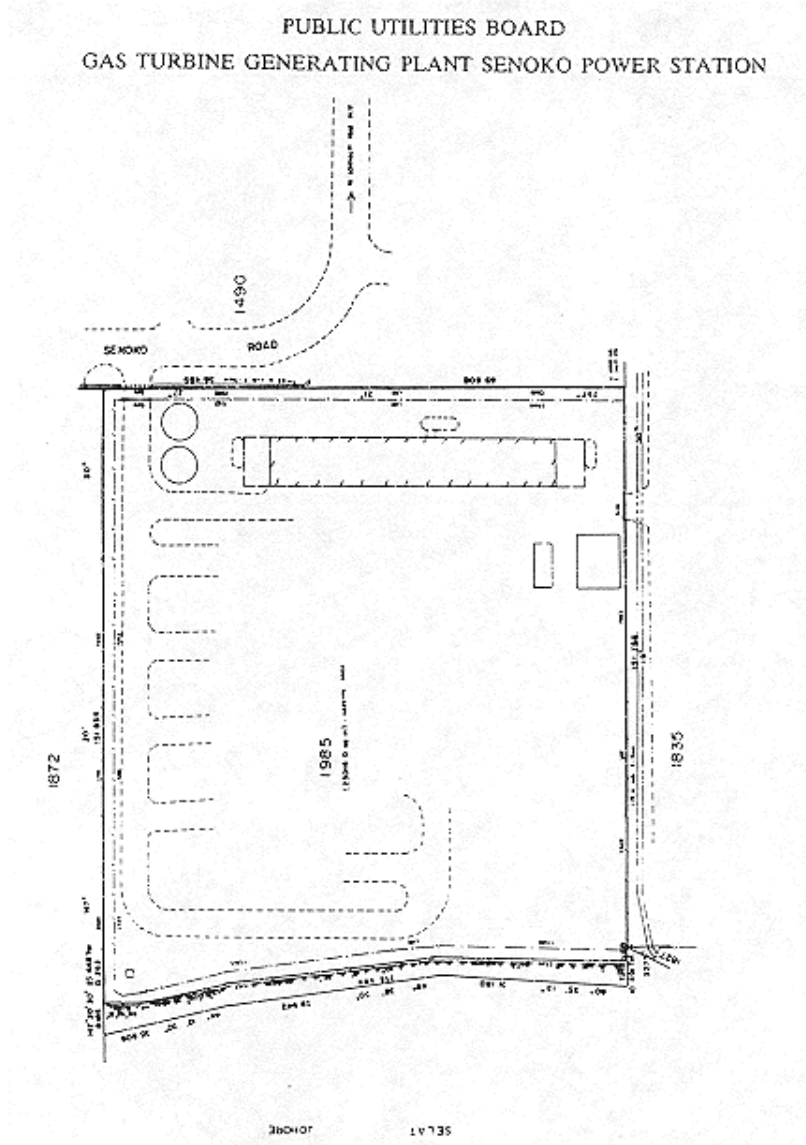
to the point of commencement.

The boundaries of the "PUBLIC UTILITIES BOARD GAS TURBINE GENERATING PLANT at Senoko Power Station" are more particularly delineated in the Plan set out hereunder.

THE SCHEDULE — *continued*

First column

Second column



THE SCHEDULE — continued

First column

Second column



Location Plan
 Approx Scale 1:10,000
 Geotex Surveyors Pte. Ltd.
 1 Goldhill Plaza
 #03-29, Podium Block
 Singapore 1130
 Tel: 2537422 (2 lines)
 Fax: 2531700

Job Title Survey and Preparation of Plans and Descriptions for Gazetting of Gas Turbine Plant Site at Senoko Mukim No. 13 Name: Sembawang
 Scale = 1:500
 Co-ordinates of Origin: N. 30,000 m E. 30,000 m

Notes:

- (1) Horizontal datum adopted from Government Cadastral Plan
- (2) All grid values, dimensions and levels shown are in metres
- (3) Date of survey:— October 1991.
- (4) H.W.M. = High Water Mark

[S 490/2014 wef 25/07/2014]

First column

Second column

The Authority

Protected Place

- (12) S 71/92 [28.2.92] MANDAI RANGE
 Assistant Chief of
 General Staff
 (Training).

THE SCHEDULE — *continued**First column**Second column*

All that area comprised in State Land being part of Lot 60-15 and part of Lot 60-20, MUKIM NO. 14 (MANDAI) occupied by “MANDAI RANGE” containing an area of about 84,248 square metres and bounded approximately as follows:

Commencing at the northern-most gate post of the aforesaid “MANDAI RANGE” which point is 42,771.1 metres North and 21,931.7 metres East of the Survey Department origin of co-ordinates (30,000 metres North and 30,000 metres East), the boundaries run along successive lines of bearings and distances as under:

<i>Bearing</i>	<i>Distance in metres</i>
5° 05'	2.2
91° 46'	7.2
19° 33'	2.0
97° 39'	2.7
90° 01'	149.1
84° 12'	16.9
89° 41'	29.8
104° 29'	10.3
130° 05'	6.0
157° 11'	6.2
178° 53'	43.2
180° 44'	83.8
173° 48'	47.2
164° 46'	12.0
182° 31'	8.9
190° 14'	8.9
210° 41'	8.7
222° 11'	3.0

THE SCHEDULE — *continued*

First column

Second column

225° 52'	5.9
240° 46'	9.1
248° 03'	3.0
250° 59'	3.2
260° 25'	8.8
268° 54'	28.1
268° 57'	30.0
176° 12'	34.8
184° 15'	17.8
186° 02'	47.8
178° 07'	14.9
168° 27'	8.9
153° 39'	9.1
157° 11'	2.9
163° 42'	3.0
166° 30'	6.0
184° 52'	24.1
191° 43'	2.9
196° 06'	3.0
200° 14'	3.1
204° 53'	2.9
213° 24'	5.9
222° 57'	6.0
232° 02'	6.1
240° 18'	6.0
248° 18'	6.0
261° 19'	9.1
269° 55'	98.9

THE SCHEDULE — *continued*

<i>First column</i>	<i>Second column</i>
273° 33'	9.0
285° 47'	6.0
291° 19'	6.0
300° 37'	3.1
307° 36'	5.9
322° 39'	9.0
338° 25'	8.9
357° 14'	6.0
19° 13'	20.5
14° 12'	23.8
79° 52'	4.4
0° 49'	206.3
63° 33'	5.1
62° 34'	4.6 (across a drain)
334° 11'	8.9
346° 27'	5.9
355° 02'	3.0
0° 47'	6.0
4° 40'	47.1
20° 11'	32.9
12° 41'	31.5
284° 53'	11.4
294° 05'	6.1
5° 05'	4.1
5° 05'	6.4 (along a gate)

to the point of commencement.

The boundaries of “MANDAI RANGE” are more particularly delineated and edged pink on

THE SCHEDULE — *continued*

First column

Second column

Survey Plan No. LE/91/59 GAZETTE filed in the office of the Director, Lands and Estates Organisation, Ministry of Defence, Singapore.

First column

Second column

The Authority

Protected Place

- (13) S 80/92 [6.3.92] TUAS NAVAL BASE
 Officer
 Commanding, Tuas
 Naval Base.

All that area comprised in part of State Land Lots 46-4, 46-5, 46-7, 46-8, 54-1, 54-3, 838, State Land Lot 46-6, part of reclaimed land Lot 987 and part of the sea, Mukim No. 7 (TUAS), containing an area of about 774,092 square metres and bounded approximately as follows:

Commencing at the northern-most corner of the boundary of the aforesaid “TUAS NAVAL BASE” which point is 31,423.2 metres North and 8,496.8 metres East of the Survey Department origin of co-ordinates (30,000 metres North and 30,000 metres East), the boundaries run along successive lines of bearings and distances as under:

<i>Bearing</i>	<i>Distance in metres</i>
133° 23'	15.3
125° 55'	116.7
141° 19'	267.1
155° 29'	39.6
156° 27'	128.5
150° 53'	23.8
139° 44'	24.0
128° 35'	24.0
117° 28'	21.9

THE SCHEDULE — *continued*

<i>First column</i>	<i>Second column</i>
The Authority	Protected Place
110° 44'	29.4
108° 25'	27.3
106° 06'	27.3
103° 46'	27.3
101° 26'	27.2
99° 06'	27.4
92° 27'	23.3
88° 08'	23.2
83° 48'	23.2
79° 30'	23.2
75° 12'	23.2
70° 53'	23.2
66° 34'	23.2
62° 16'	23.2
57° 41'	18.5
52° 42'	18.5
47° 51'	12.4
140° 28'	347.2
230° 28'	5.0
140° 28'	134.0
230° 28'	331.4
230° 28'	19.9
239° 31'	537.1 (across the sea)
190° 07'	177.0 (across the sea)
319° 41'	726.7 (across the sea)
354° 47'	225.4 (across the sea)
50° 26'	301.0 (across the sea)

THE SCHEDULE — *continued*

<i>First column</i>	<i>Second column</i>
The Authority	Protected Place
50° 26'	60.9
50° 26'	228.3
336° 25'	40.2
335° 27'	36.8
321° 18'	261.6
305° 54'	114.6
313° 25'	17.3
43° 23'	21.6

to the point of commencement.

The boundaries of “TUAS NAVAL BASE” are more particularly delineated and edged pink on Survey Print No. LE/91/60 GAZETTE filed in the office of the Director, Lands and Estates Organisation, Ministry of Defence, Singapore.

<i>First column</i>	<i>Second column</i>
The Authority	Protected Place
(14) S 105/92 [20.3.92] Singapore Technologies Logistics Pte. Ltd.	TUAS JETTY

All that area comprised in part of Lot 1502, Mukim No. 7 (TUAS) part of foreshore and part of seabed to the south-west of the mainland occupied by “TUAS JETTY” containing an area of about 1.60 hectares and bounded approximately as follows:

Commencing at the northern-most corner of the perimeter fence of the aforesaid “TUAS JETTY” which point’s co-ordinates are 30,416.2 metres North and 4,204.5 metres East of the Survey Department origin of co-ordinates (30,000 metres North and 30,000 metres East), the boundaries run

THE SCHEDULE — *continued*

<i>First column</i>	<i>Second column</i>
The Authority	Protected Place
	along successive lines of bearings and distances as under:
<i>Bearing</i>	<i>Distance in metres</i>
149° 23'	52.0 (along chain link fence and gates)
239° 20'	52.1 (along chain link fence)
328° 22'	10.8 (along chain link fence)
229° 24'	48.0 (about one metre offset from slipway)
319° 04'	9.0 (along slipway)
49° 28'	50.1 (about one metre offset from slipway)
239° 23'	854.8 (about one metre offset from jetty)
202° 39'	13.5 (about one metre offset from jetty)
157° 29'	50.6 (about one metre offset from jetty)
247° 31'	18.0 (about one metre offset from jetty)
337° 29'	132.0 (about 2 metres offset from jetty)
67° 39'	18.0 (about one metre offset from jetty)
157° 28'	50.6 (about one metre offset from jetty)
111° 58'	13.2 (about one metre offset from jetty)
59° 23'	852.5 (about one metre offset from jetty)

THE SCHEDULE — *continued*

<i>First column</i>	<i>Second column</i>
The Authority	Protected Place
330° 39'	20.0 (along chain link fence)
59° 24'	52.1 (along chain link fence)

to the point of commencement.

The boundaries of “TUAS JETTY” are more particularly delineated and edged pink on Survey Plan No. LE/92/1/GAZETTE filed in the office of the Director, Lands and Estates Organisation, Ministry of Defence, Singapore.

<i>First column</i>	<i>Second column</i>
The Authority	Protected Place
(15) S 144/92 [27.3.92] Commander, HQ 2 PDF Command.	NEE SOON WAREHOUSE

All that area comprised in part of State Land Lots 15, 17 and part of State Reserve (Old Sembawang Road), Mukim No. 19 (NORTH SELETAR) occupied by “NEE SOON WAREHOUSE” containing an area of about 7,406 square metres and bounded approximately as follows:

Commencing at the southern-most corner of the perimeter fence of the aforesaid “NEE SOON WAREHOUSE” which point is 43,516.7 metres North and 26,683.2 metres East of the Survey Department origin of co-ordinates (30,000 metres North and 30,000 metres East), the boundaries run along successive lines of fence of bearings and distances as under:

<i>Bearing</i>	<i>Distance in metres</i>
276° 49'	25.0
296° 13'	39.9
330° 17'	4.2

THE SCHEDULE — *continued*

<i>First column</i>	<i>Second column</i>
The Authority	Protected Place
26° 05'	36.8
19° 18'	23.8
21° 16'	31.4
44° 14'	18.1
116° 06'	60.4
207° 03'	6.0
196° 16'	38.1
205° 59'	32.0
207° 26'	1.4 (across gate)
206° 11'	12.2 (across gate)
206° 14'	13.9

to the point of commencement.

The boundaries of “NEE SOON WAREHOUSE” are more particularly delineated and edged pink on Survey Plan No. LE/92/3/GAZETTE filed in the office of the Director, Lands and Estates Organisation, Ministry of Defence, Singapore.

<i>First column</i>	<i>Second column</i>
The Authority	Protected Place
(16) S 146/92 [27.3.92] S 212/92 The Director, Electricity Department, Public Utilities Board.	PUBLIC UTILITIES BOARD 230/66/22/6.6 KV SUBSTATION AT KAMPONG JAVA ROAD. All that area comprised in part of Lot 801 TS No. 28 occupied by “PUB 230/66/22/6.6 KV SUBSTATION” containing an area of about 11,005 square metres and bounded approximately as follows:

Commencing at a point on the northernmost corner of the perimeter fence of the aforesaid “PUB SUBSTATION”, which point is 32,866.4 metres North and 29,286.6 metres East of the

THE SCHEDULE — *continued*

First column

Second column

The Authority

Protected Place

Survey Department origin of co-ordinates (30,000 metres North, 30,000 metres East), the boundaries run along successive lines of fence of bearings and distances as under:

<i>Bearing</i>	<i>Distance in metres</i>
201° 42'	36.9
199° 35'	35.5
197° 45'	35.7
204° 53'	36.2
197° 08'	10.1
296° 43'	44.3
207° 45'	0.5
297° 03'	31.1
297° 11'	6.0 (along a gate)
297° 03'	14.1
351° 21'	35.3
77° 25'	7.9
69° 54'	26.8
55° 01'	36.0
30° 19'	21.3
314° 02'	9.8
350° 13'	0.2
82° 55'	24.7

to a point where it meets a wall, thence along successive lines which follow a series of walls, gates and fence of bearings and distances as under:

<i>Bearing</i>	<i>Distance in metres</i>
82° 45'	4.7 (along a wall)

THE SCHEDULE — *continued*

<i>First column</i>	<i>Second column</i>
The Authority	Protected Place
83° 06'	9.0 (along a gate)
83° 11'	4.7 (along a wall)
83° 15'	15.4 (along a fence)
82° 05'	4.7 (along a wall)
82° 55'	8.3 (along a gate)
83° 03'	4.7 (along a wall)
84° 16'	3.8 (along a fence)

to the point of commencement.

The boundaries of the “PUB 230/66/22/6.6 KV SUBSTATION” are more particularly delineated and edged pink on Survey Plan No. 30017 filed in the office of the Chief Surveyor, Singapore.

<i>First column</i>	<i>Second column</i>
The Authority	Protected Place
(17) S 351/92 The President and Chief Executive Officer, Toppan Leefung Pte. Ltd.	The TOPPAN LEEFUNG PTE. LTD. UBI PLANT, 97 UBI AVENUE 4, SINGAPORE 408754

All that area comprised in part of Lot 3134 Pt, Mukim 23, Paya Lebar, occupied by Toppan Leefung Pte. Ltd. and Toppan Security Printing Pte. Ltd. containing an area of approximately 5,501.7 square metres and bounded approximately as follows:

Commencing at a point on the southern corner of the perimeter fence of the aforesaid Toppan Leefung Pte. Ltd. and Toppan Security Printing Pte. Ltd., which is approximately 35,149.244 metres North and 34,761.004 metres East of the Survey Department origin of co-ordinates, the boundary runs along a fence on a bearing of 66°

THE SCHEDULE — *continued*

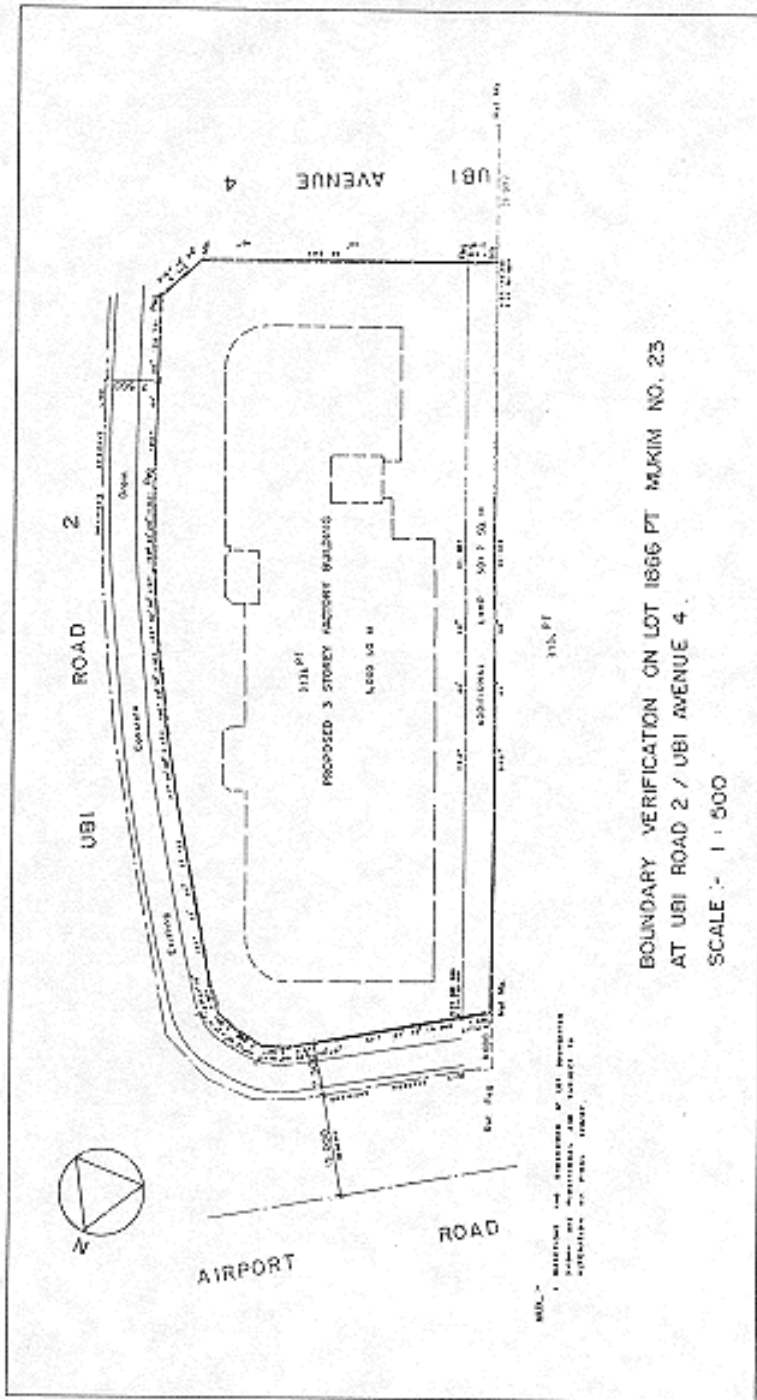
44' 44" for a distance of 43.784 metres (partly across the main entrance gate), thence along successive lines of fences of bearings and distances as under:

<i>Bearing</i>	<i>Distance in metres</i>
25° 12' 30"	8.712
338° 05' 30"	28.701
336° 34' 20"	11.921
333° 32' 00"	11.921
330° 30' 20"	11.923
327° 28' 00"	11.922
325° 56' 20"	26.724
317° 37' 10"	3.946
292° 34' 50"	3.991
270° 13' 50"	3.988
246° 19' 40"	3.987
236° 43' 20"	6.841
237° 07' 40"	19.366
237° 51' 14"	4.555
156° 44' 40"	111.125

to the point of commencement.

The boundaries of Toppan Leefung Pte. Ltd. and Toppan Security Printing Pte. Ltd. are more particularly delineated in the Plan set out hereunder.

THE SCHEDULE — *continued*



THE SCHEDULE — *continued*

[S 637/2015 wef 04/11/2015]

<i>First column</i>	<i>Second column</i>																		
The Authority	Protected Place																		
(18) S 505/92 [11.12.92] Assistant Chief of General Staff (Training).	PULAU TEKONG M203 RANGE All that area comprised in parts of State Land Lots 482, 49, 503, 533, 545, 298, part of foreshore, part of seabed, part of Sungei Seminei and part of State Reserve, Mukim No. 33 (PULAU TEKONG) occupied by “PULAU TEKONG M203 RANGE” containing an area of about 168,078 square metres and bounded approximately as follows: Commencing at a point on the northern-most corner of the boundary of the aforesaid “PULAU TEKONG M203 RANGE” which point is 42,884.0 metres North and 50,435.6 metres East of the Survey Department origin of co-ordinates (30,000 metres North and 30,000 metres East), the boundaries run along successive lines of bearings and distances as under:																		
	<table border="0"> <thead> <tr> <th style="text-align: left;"><i>Bearing</i></th> <th style="text-align: left;"><i>Distance in metres</i></th> </tr> </thead> <tbody> <tr> <td>109° 15'</td> <td>170.0 (partly across Sungei Seminei)</td> </tr> <tr> <td>176° 53'</td> <td>17.7 (to meet the northern edge of cattle fence)</td> </tr> <tr> <td>176° 53'</td> <td>39.3 (along cattle fence)</td> </tr> <tr> <td>175° 21'</td> <td>50.4 (along cattle fence)</td> </tr> <tr> <td>167° 22'</td> <td>22.9 (along cattle fence)</td> </tr> <tr> <td>162° 29'</td> <td>27.7 (along cattle fence)</td> </tr> <tr> <td>158° 34'</td> <td>25.1 (along cattle fence)</td> </tr> <tr> <td>143° 50'</td> <td>32.0 (along cattle fence)</td> </tr> </tbody> </table>	<i>Bearing</i>	<i>Distance in metres</i>	109° 15'	170.0 (partly across Sungei Seminei)	176° 53'	17.7 (to meet the northern edge of cattle fence)	176° 53'	39.3 (along cattle fence)	175° 21'	50.4 (along cattle fence)	167° 22'	22.9 (along cattle fence)	162° 29'	27.7 (along cattle fence)	158° 34'	25.1 (along cattle fence)	143° 50'	32.0 (along cattle fence)
<i>Bearing</i>	<i>Distance in metres</i>																		
109° 15'	170.0 (partly across Sungei Seminei)																		
176° 53'	17.7 (to meet the northern edge of cattle fence)																		
176° 53'	39.3 (along cattle fence)																		
175° 21'	50.4 (along cattle fence)																		
167° 22'	22.9 (along cattle fence)																		
162° 29'	27.7 (along cattle fence)																		
158° 34'	25.1 (along cattle fence)																		
143° 50'	32.0 (along cattle fence)																		

THE SCHEDULE — *continued*

<i>First column</i>	<i>Second column</i>
The Authority	Protected Place
183° 58'	12.7 (along cattle fence)
200° 13'	14.9 (along cattle fence)
189° 49'	85.2 (along cattle fence)
189° 49'	277.5 (partly across the sea)
295° 43'	410.0 (across the sea)
26° 02'	520.0 (partly across the sea)

to the point of commencement.

The boundaries of “PULAU TEKONG M203 RANGE” are more particularly delineated and edged pink on Survey Plan No. LE/92/16 GAZETTE filed in the office of the Director, Lands and Estates Organisation, Ministry of Defence, Singapore.

[S 506/93 wef 17/12/1993]

[S 458/96 wef 01/01/1995]

LEGISLATIVE HISTORY
PROTECTED PLACES (CONSOLIDATION) ORDER
(CHAPTER 256, O 4)

This Legislative History is provided for the convenience of users of the Protected Places (Consolidation) Order. It is not part of this Order.

1. G. N. No. S 319/1991 — Protected Places (Consolidation) Order 1991

Date of commencement : Date not available

2. G. N. No. S 366/1993

Date of commencement : Date not available

3. G. N. No. S 506/1993

Date of commencement : Date not available

4. 1993 Revised Edition — Protected Places (Consolidation) Order

Date of operation : 1 April 1993

5. G. N. No. S 458/1996 — Protected Places (Consolidation) (Amendment) Order 1996

Date of commencement : 1 January 1995

6. G. N. No. S 40/1998 — Protected Places (Consolidation) (Amendment) Order 1998

Date of commencement : 23 January 1998

7. G. N. No. S 418/2000 — Protected Places (Consolidation) (Amendment) Order 2000

Date of commencement : 20 September 2000

8. G. N. No. S 75/2005 — Protected Places (Consolidation) (Amendment) Order 2005

Date of commencement : 15 February 2005

9. G. N. No. S 344/2005 — Protected Places (Consolidation) (Amendment No. 2) Order 2005

Date of commencement : 3 June 2005

10. G. N. No. S 298/2006 — Protected Places (Consolidation) (Amendment) Order 2006

Date of commencement : 8 June 2006

- 11. G. N. No. S 124/2008 — Protected Places (No. 2) Order 2008**
Date of commencement : 14 March 2008
- 12. G. N. No. S 591/2009 — Protected Places (Consolidation) (Amendment) Order 2009**
Date of commencement : 1 December 2009
- 13. G. N. No. S 620/2009 — Protected Places (Consolidation) (Amendment No. 2) Order 2009**
Date of commencement : 15 December 2009
- 14. G. N. No. S 611/2010 — Protected Places (Consolidation) (Amendment) Order 2010**
Date of commencement : 26 October 2010
- 15. G. N. No. S 552/2011 — Protected Places (Consolidation) (Amendment) Order 2011**
Date of commencement : 29 September 2011
- 16. G.N. No. S 61/2012 — Protected Places (Consolidation) (Amendment) Order 2012**
Date of commencement : 13 February 2012
- 17. G.N. No. S 19/2013 — Protected Places (Consolidation) (Amendment) Order 2013**
Date of commencement : 16 January 2013
- 18. G.N. No. S 486/2014 — Protected Places (Consolidation) (Amendment No. 4) Order 2014**
Date of commencement : 24 July 2014
- 19. G.N. No. S 490/2014 — Protected Places (Miscellaneous Amendments) Order 2014**
Date of commencement : 25 July 2014
- 20. G.N. No. S 637/2015 — Protected Places (Miscellaneous Amendments) (No. 2) Order 2015**
Date of commencement : 4 November 2015
- 21. G.N. No. S 230/2016 — Protected Places (No. 3) Order 2016**
Date of commencement : 24 May 2016