

**PROTECTED AREAS AND PROTECTED PLACES ACT
(CHAPTER 256, SECTION 5(1))**

PROTECTED PLACES (CONSOLIDATION) ORDER

ARRANGEMENT OF PARAGRAPHS

Paragraph

1. Citation
 2. Protected places, permits and authorised officers
The Schedule
-

Citation

1. This Order may be cited as the Protected Places (Consolidation) Order.

Protected places, permits and authorised officers

2. The premises described in the second column of the Schedule are declared to be protected places for the purposes of the Protected Areas and Protected Places Act, and no person shall be in those premises unless he is in possession of a pass-card or permit issued by the authority specified in the first column of the Schedule or has received the permission of an authorised officer on duty at the premises to enter the premises.

THE SCHEDULE

First column

Second column

The Authority

Protected Place

(1) S 319/91 [26.7.91]
 The Director,
 Electricity
 Department, Public
 Utilities Board.

(1) Deleted by S 124/2008, wef 14/03/2008.

(2) PUBLIC UTILITIES BOARD 230 KV
SUBSTATION AT UPPER JURONG ROAD.

THE SCHEDULE — *continued*

First column
The Authority

Second column
Protected Place

All that area comprised wholly on part of Lot 2271 MK No. 16 occupied by “PUB 230 kv Substation” containing an area of about 15,624.4 square metres and bounded approximately as follows:

Commencing at a point on the south-eastern corner of the perimeter fence of the aforesaid “PUB 230 kv Substation” which point is 34,475.152 metres North and 11,468.205 metres East of the Survey Department origin of co-ordinates, the boundaries run along successive lines of fences of bearings and distances as under:

<i>Bearing</i>	<i>Distance in metres</i>
270° 07'	88.6 (along fence)
347° 42'	4.7 (along fence)
331° 34'	8.9
0° 00'	154.6
90° 25'	1.7
157° 08'	5.0
168° 47'	2.6
178° 00'	5.2
88° 48'	1.0 (at pillar of gate)
89° 33'	7.2 (along pillars of gate)
89° 54'	1.2 (along pillars of side gate)
90° 18'	1.0 (along fence)
2° 25'	7.8
16° 35'	2.7
25° 32'	2.8
87° 50'	56.4
150° 13'	3.8

THE SCHEDULE — *continued*

<i>First column</i>	<i>Second column</i>
The Authority	Protected Place
90° 58'	1.3 (at pillar of side gate)
90° 45'	1.1
91° 03'	7.2 (along pillars of main gate)
91° 06'	1.0 (along fence)
19° 00'	4.2
87° 46'	6.6
180° 02'	170.8

to the point of Commencement.

(3) *Deleted by S 124/2008, wef 14/03/2008.*

(4) PUBLIC UTILITIES BOARD 230 KV
SUBSTATION AT WEST ADMIRALTY
ROAD.

All that area comprised partly in Lot 1680 and partly in Lot 1681Pt MK No. 13 occupied by “PUB 230/66 KV Substation” containing an area of 6,968.2 square metres and bounded approximately as follows:

Commencing at a point on the south-western corner of the perimeter fence of the aforesaid “PUB Substation” which point is 49,254.244 metres North and 25,466.347 metres East of the Survey Department of origin of co-ordinates, the boundaries run along successive lines of fences of bearings and distances as under:

<i>Bearing</i>	<i>Distance in metres</i>
333° 54'	10.1 (along fence fronting Sembawang)
52° 32'	0.4
334° 00'	32.1
333° 31'	12.6

THE SCHEDULE — *continued*

<i>First column</i>	<i>Second column</i>
The Authority	Protected Place
330° 01'	16.1
48° 34'	0.5
329° 41'	18.5
329° 33'	3.3
37° 14'	17.7
64° 13'	26.8 (along fence fronting Admiralty Road West)
154° 22'	7.4
62° 56'	0.9
63° 57'	10.2 (along a gate)
66° 57'	0.6 (along a fence)
335° 08'	7.4
64° 04'	18.1
154° 22'	41.8
154° 27'	25.0
154° 17'	22.5
63° 35'	0.5
155° 14'	12.0
244° 27'	44.4
244° 38'	25.6

to the point of commencement.

The boundaries of the Public Utilities Board 230 KV Substations at Pasir Panjang Road, Upper Jurong Road, Ubi Avenue 3 and West Admiralty Road are delineated in the Plans set out hereunder.

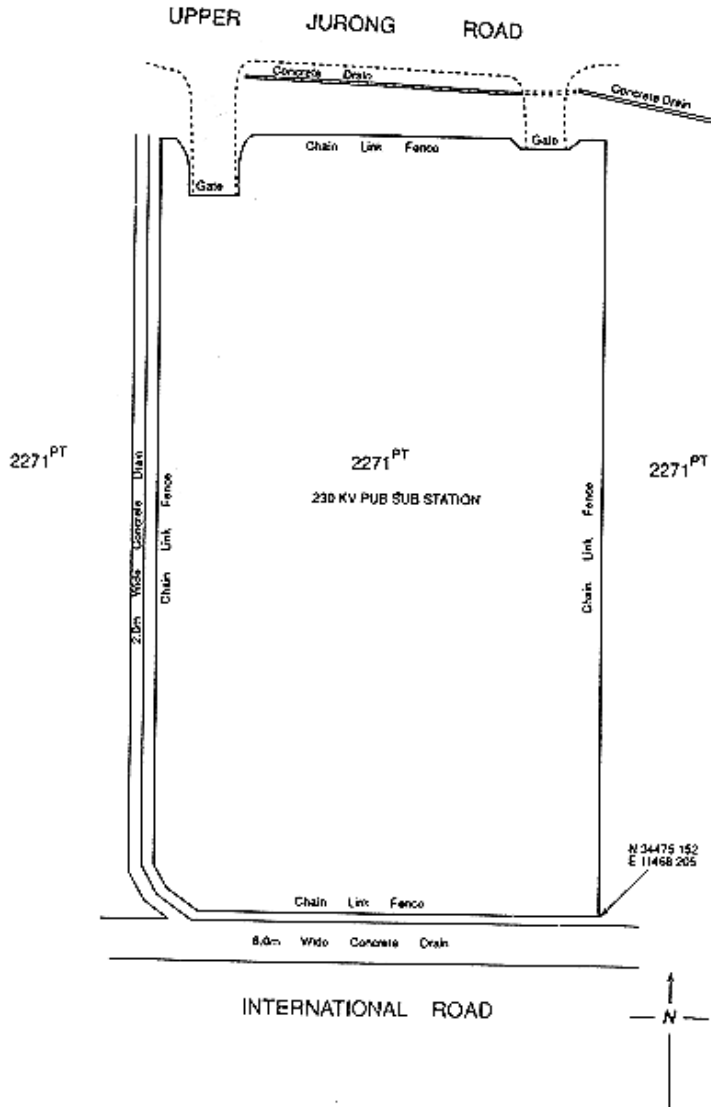
(1) *Form 1 — Deleted by S 124/2008, wef 14/03/2008.*

(2) Public Utilities Board 230 KV Substation at Upper Jurong Road

THE SCHEDULE — continued

First column
The Authority

Second column
Protected Place



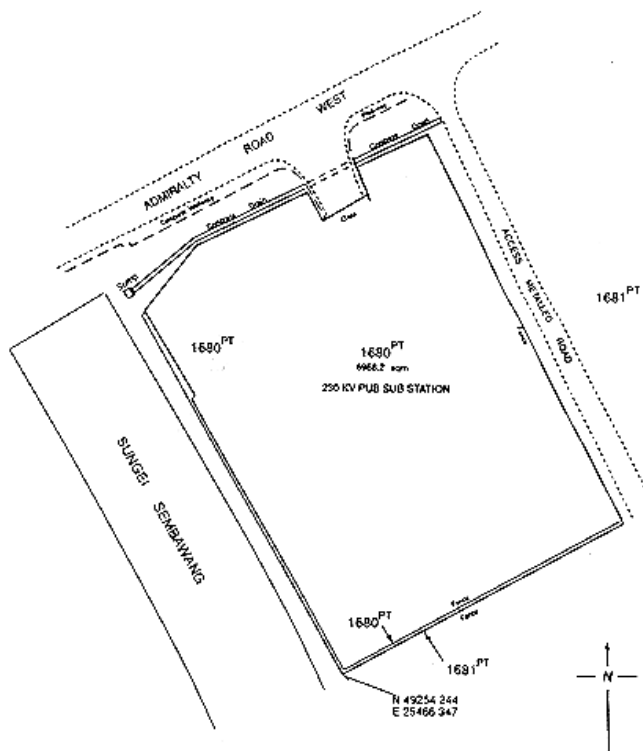
(3) Form 3 — Deleted by S 124/2008, wef 14/03/2008.

(4) Public Utilities Board 230 KV Substation at West Admiralty Road

THE SCHEDULE — *continued*

First column
The Authority

Second column
Protected Place



First column
The Authority

Second column
Protected Place

- (2) S 330/91 [2.8.91] SINGAPORE SHIPBUILDING & General Manager, ENGINEERING LIMITED PREMISES, NO. Singapore Shipbuilding 16 BENOI ROAD SINGAPORE 2262. & Engineering Limited.

All that area comprised wholly in Lot 203 MK No. 7 (TUAS) occupied by the "SINGAPORE SHIPBUILDING & ENGINEERING LIMITED" containing an area of about 20,224.2 square metres and bounded approximately as follows:

THE SCHEDULE — *continued*

First column

Second column

The Authority

Protected Place

Commencing at the southern-most corner of the perimeter fence of the aforesaid “SINGAPORE SHIPBUILDING & ENGINEERING LIMITED” which point is 31,480.060 metres North and 10,772.082 metres East of the Survey Department origin of co-ordinates, the boundaries run along successive lines of fences of bearings and distances as under:

<i>Bearing</i>	<i>Distance in metres</i>
315° 17'	76.6 (along bottom of slope)
315° 15'	87.4 (along bottom of slope)
82° 52'	36.2
49° 12'	0.1
82° 54'	60.8
82° 46'	51.9
82° 44'	53.5
172° 35'	5.3
262° 56'	4.8 (along concrete access)
187° 24'	0.2
173° 03'	2.6 (at bin centre)
157° 52'	0.3
83° 31'	4.4
172° 22'	4.9 (along a wall)
173° 00'	8.0 (across an access road)
172° 53'	4.9 (along a wall)
84° 32'	0.3
172° 48'	55.1

THE SCHEDULE — *continued*

<i>First column</i>	<i>Second column</i>
The Authority	Protected Place
265° 47'	0.3
172° 33'	6.1 (partly along a wall)
172° 33'	7.7 (across an access)
172° 46'	6.2 (partly along a wall)
88° 38'	0.3
172° 52'	13.8 (along bottom of slope)
177° 12'	3.6 (along bottom of slope)
219° 29'	16.2 (along bottom of slope)
258° 39'	3.6
262° 52'	45.4
262° 41'	41.5

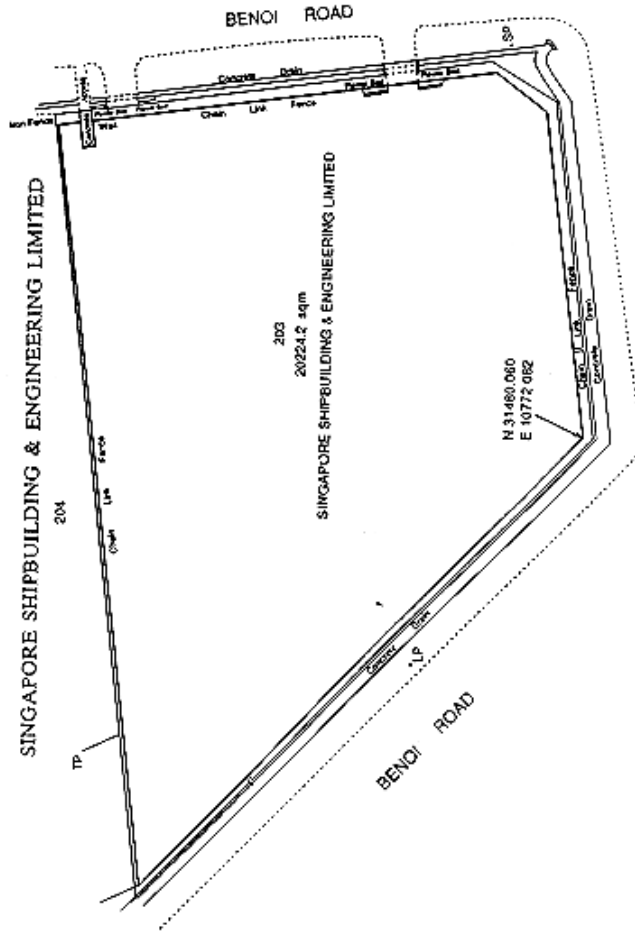
to the point of commencement.

The boundaries of “SINGAPORE SHIP-BUILDING & ENGINEERING LIMITED” are delineated in the Plan set out hereunder.

THE SCHEDULE — continued

First column
The Authority

Second column
Protected Place



First column
The Authority

Second column
Protected Place

- (3) S 345/91 (1) [8.8.91] (1) PUBLIC UTILITIES BOARD 230/66/22KV
 The Director, SUBSTATION AT KALLANG BASIN.
 Electricity
 Department.

THE SCHEDULE — *continued*

First column
The Authority

Second column
Protected Place

All that area comprised wholly in Lots 6541,5241 and 6535 MK No. 24 occupied by “PUB 230/66/22KV substation” containing an area of 17,417.2 square metres and bounded approximately as follows:

Commencing at the southern-west point of the perimeter fence of the aforesaid “PUB substation” which point is 33,514.518 metres North and 32,160.033 metres East of the Survey Department of origin of co-ordinates, the boundaries run along successive lines of fences of bearings and distances as under:

<i>Bearing</i>	<i>Distance in metres</i>
275° 14'	37.6 (along fence beside a concrete drain)
327° 10'	8.5
310° 30'	4.9
327° 14'	26.1
328° 50'	38.0
14° 51'	7.3 (along fence)
57° 49'	28.9 (along fence fronting Kallang Bahru)
54° 32'	0.2
58° 11'	20.3
58° 19'	1.2 (along a side gate)
58° 12'	9.5 (to another side gate)
59° 55'	1.2 (along a side gate)
57° 38'	18.2 (along fence)
59° 32'	2.8
82° 25'	2.8
32° 16'	0.1

THE SCHEDULE — *continued*

<i>First column</i>	<i>Second column</i>
The Authority	Protected Place
58° 08'	3.4 (along a gate)
97° 30'	0.1
57° 16'	14.2 (along a fence)
7° 06'	0.1
55° 01'	2.1
58° 05'	5.3 (along a gate)
58° 24'	46.8
110° 12'	11.4
148° 15'	30.7 (along fence fronting Geylang Bahru)
148° 30'	36.0
149° 46'	5.6
151° 23'	6.1
152° 54'	18.0 (across a concrete drain)
238° 02'	58.7
238° 15'	19.4
237° 04'	2.5
238° 26'	44.0
239° 28'	7.8
238° 51'	0.2
255° 59'	2.9 (across a concrete drain)

to the point of commencement.

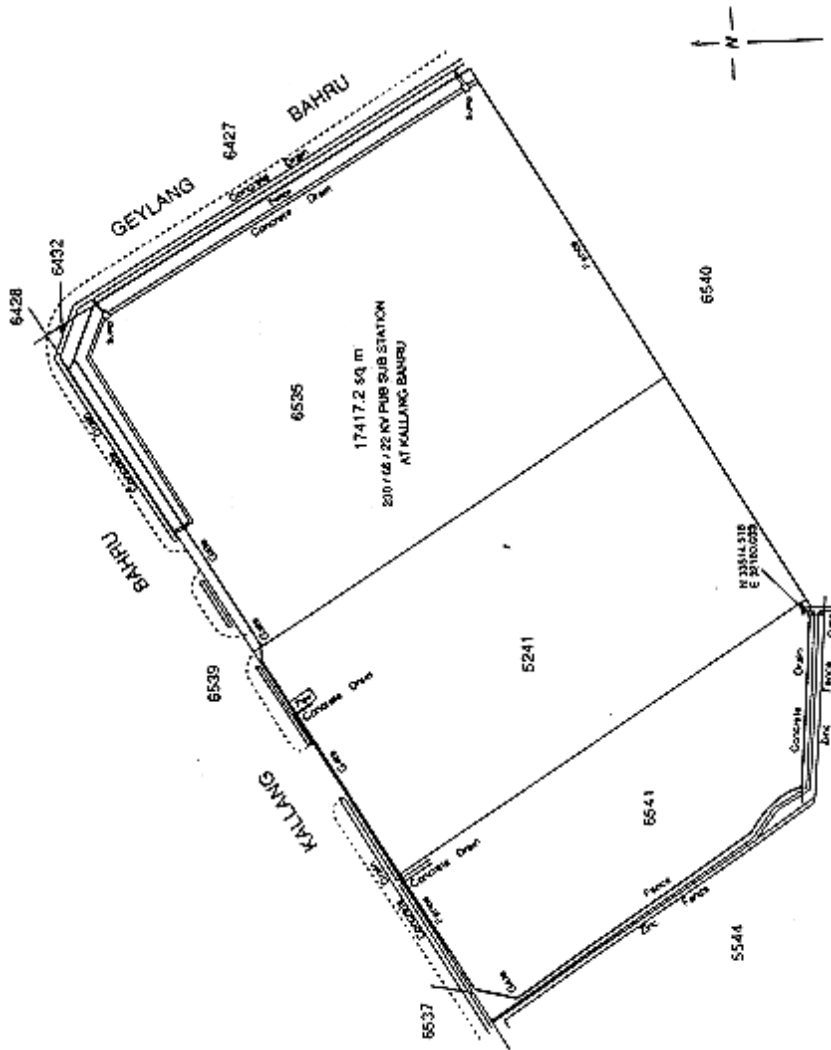
The boundaries of the “PUB 230/66/22KV substation” are more particularly delineated in the Plan set out hereunder.

THE SCHEDULE — *continued*

First column
The Authority

Second column
Protected Place

PUBLIC UTILITIES BOARD
SUBSTATION AT KALLANG



The Director, Electricity
Department.

(2) PUBLIC UTILITIES BOARD 230/66/22KV
SUBSTATION AT AYER RAJAH
CRESCENT.

THE SCHEDULE — *continued*

<i>First column</i>	<i>Second column</i>
The Authority	Protected Place

All that area comprised wholly in Lot 1711 MK No. 3 occupied by “PUB 230/66/22KV substation” containing an area of 13,518.6 square metres and bounded approximately as follows:

Commencing at the south-easterly corner of the perimeter fence of the aforesaid “PUB substation” which point is 30,997.930 metres North and 23,042.284 metres East of the Survey Department of origin of co-ordinates, the boundaries run along successive lines of fences of bearings and distances as under:

<i>Bearing</i>	<i>Distance in metres</i>
292° 17'	2.7 (along fence)
293° 40'	0.8 (concrete gate pillar)
20° 31'	0.6
292° 47'	5.9 (along gate)
204° 24'	0.6 (concrete gate pillar)
293° 32'	0.8
305° 21'	5.8 (along fence)
303° 26'	32.5
292° 53'	64.8
342° 04'	2.9
339° 53'	9.8
22° 25'	15.5
22° 55'	1.3 (along small gate)
22° 36'	9.2 (along big gate)
22° 25'	1.2 (along small gate)
23° 28'	0.2 (across concrete gate pillar)
292° 52'	0.1 (along brick wall)

THE SCHEDULE — *continued*

<i>First column</i>		<i>Second column</i>
The Authority		Protected Place
	22° 52'	23.0 (along outer face of brick wall fronting Ayer Rajah Crescent)
	112° 38'	4.3
	21° 23'	0.9
	22° 28'	7.3 (along big gate)
	22° 12'	0.8 (across concrete gate pillar)
	22° 32'	1.0 (along small gate)
	292° 41'	4.4 (along outer face of brick wall)
	23° 01'	0.4
	74° 10'	0.1 (along fence)
	22° 55'	31.5
	68° 33'	13.0

to the point of commencement.

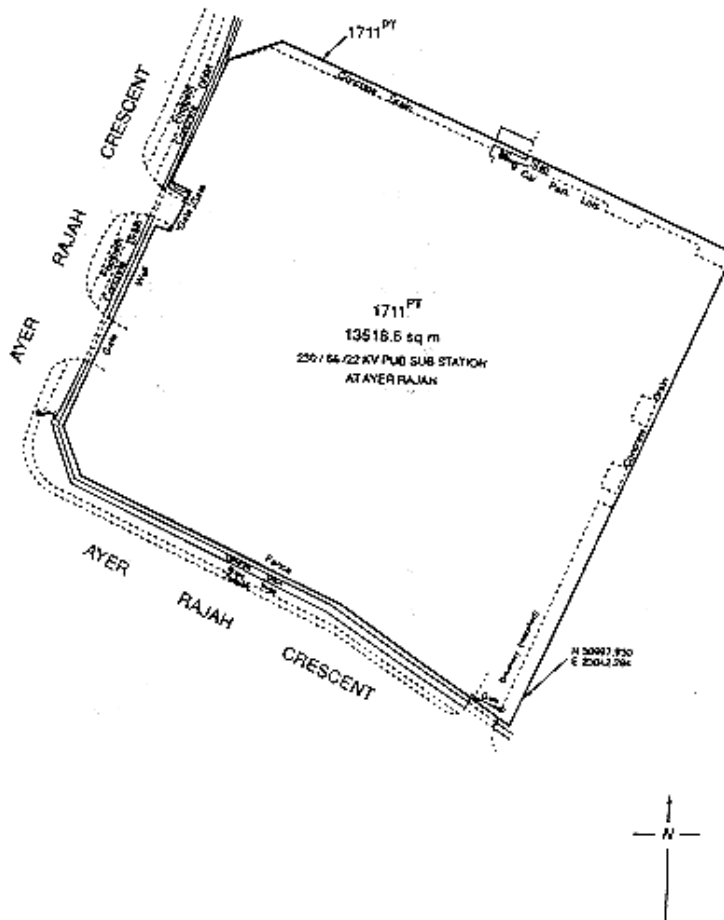
The boundaries of the “PUB 230/66/22KV substation” are more particularly delineated in the Plan set out hereunder.

THE SCHEDULE — continued

First column
The Authority

Second column
Protected Place

PUBLIC UTILITIES BOARD
SUBSTATION AT AYER RAJAH CRESCENT



The Director, Electricity Department.

(3) PUBLIC UTILITIES BOARD 230/66/22KV SUBSTATION AT TAMPINES ROAD.

All that area comprised wholly in Lot 999 MK No. 29 occupied by “PUB 230/66/22KV substation” containing an area of 14,828.7 square metres and bounded approximately as follows:

THE SCHEDULE — *continued*

First column
The Authority

Second column
Protected Place

Commencing at the south-easterly corner of the perimeter fence of the aforesaid “PUB substation” which point is 39,107.490 metres North and 39,971.614 metres East of the Survey Department of origin of co-ordinates, the boundaries run along successive lines of fences of bearings and distances as under:

<i>Bearing</i>	<i>Distance in metres</i>
278° 01'	32.3 (along fence)
278° 11'	26.9
278° 06'	33.0
278° 11'	26.8
278° 10'	36.1
8° 06'	32.8
8° 07'	24.0
8° 12'	36.2
87° 48'	7.1 (along fence fronting Tampines Road)
185° 09'	1.0
186° 17'	3.8 (along a gate)
97° 33'	13.0 (along fence)
98° 20'	1.2
98° 34'	3.8
98° 03'	7.8 (along a gate)
95° 44'	1.1
7° 18'	9.7
87° 35'	11.6
89° 25'	30.5
101° 19'	29.1

THE SCHEDULE — *continued*

<i>First column</i>		<i>Second column</i>
The Authority		Protected Place
	111° 57'	6.3
	125° 17'	9.3
	140° 18'	33.0
	157° 26'	6.1
	146° 00'	12.8
	188° 05'	32.1
	188° 09'	29.8

to the point of commencement.

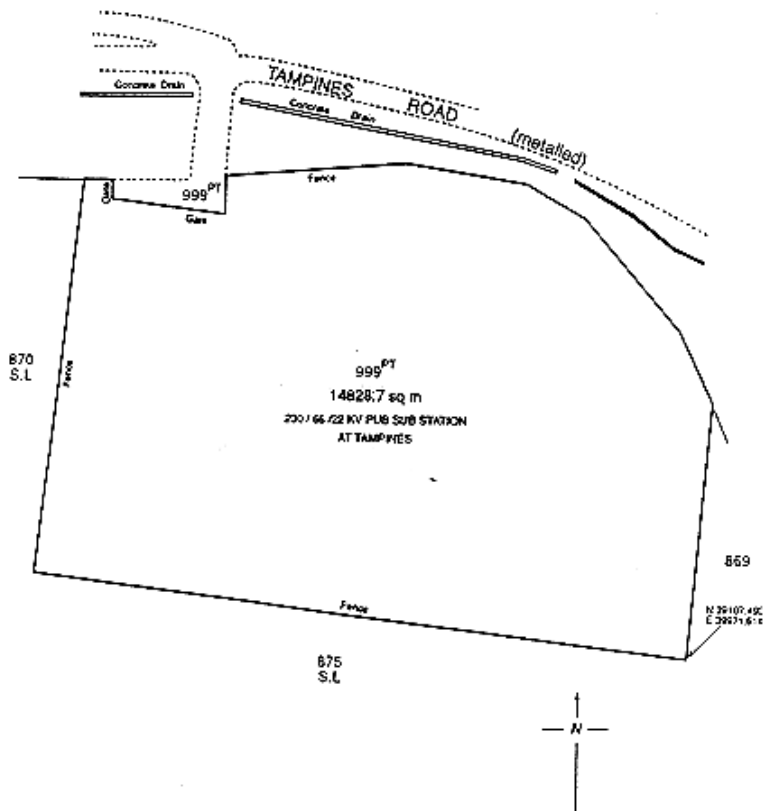
The boundaries of the “PUB 230/66/22KV substation” are more particularly delineated in the Plan set out hereunder:

THE SCHEDULE — *continued*

First column
The Authority

Second column
Protected Place

PUBLIC UTILITIES BOARD
SUBSTATION AT TAMPINES ROAD



The Director, Electricity Department.

(4) PUBLIC UTILITIES BOARD 230/66/22KV SUBSTATION AT CHOA CHU KANG ROAD.

All that area comprised wholly in Lot 1529 MK No. 10 occupied by “PUB 230/66/22KV substation” containing an area of 8,313.9 square metres and bounded approximately as follows:

Commencing at the south-westerly corner of the perimeter fence of the aforesaid “PUB substation”

THE SCHEDULE — *continued*

First column
The Authority

Second column
Protected Place

which point is 39,750.911 metres North and 19,303.460 metres East of the Survey Department of origin of co-ordinates, the boundaries run along successive lines of fences of bearings and distances as under:

<i>Bearing</i>	<i>Distance in metres</i>
1° 42'	33.9 (along fence)
1° 44'	34.7
1° 57'	33.2
80° 01'	10.3 (along fence fronting Choa Chu Kang Road)
73° 22'	13.0
68° 05'	15.8
183° 44'	5.3
91° 01'	0.6
91° 30'	11.5 (along a gate)
92° 12'	2.0 (along a fence)
1° 43'	8.8
66° 42'	15.9
67° 12'	11.3
181° 25'	23.0
181° 57'	32.8
181° 58'	27.7
182° 33'	42.1
271° 12'	33.8
271° 28'	23.0
252° 43'	9.7
271° 25'	9.0

THE SCHEDULE — continued

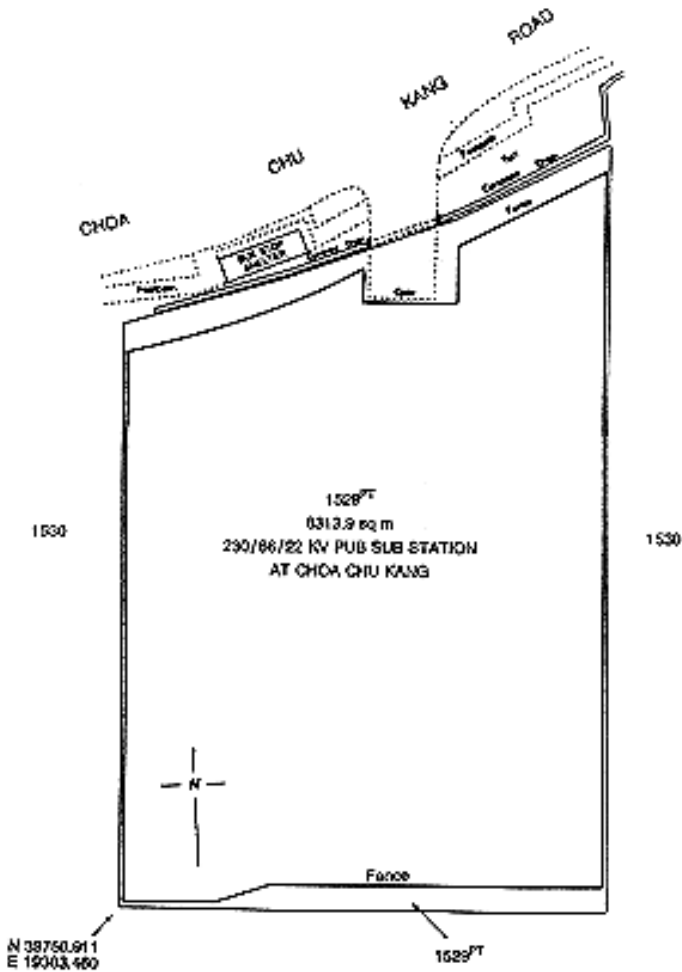
First column
The Authority

Second column
Protected Place

to the point of commencement.

The boundaries of the “PUB 230/66/22KV substation” are more particularly delineated in the Plan set out hereunder:

PUBLIC UTILITIES BOARD
SUBSTATION AT CHOA CHU KANG ROAD



THE SCHEDULE — *continued*

First column

Second column

The Authority

Protected Place

(4) S 368/91 [23.8.91] MRT OPERATIONS CONTROL CENTRE.

Managing Director,
Singapore MRT Ltd.

All the building (excluding its walkway at the ground level) and area known as “MRT OPERATIONS CONTROL CENTRE” comprised in part of Lots 371 and 401 T.S. No. 11 containing an area of about 5,380 square metres and bounded approximately as follows:

Commencing at the northern-most corner of the aforesaid “MRT OPERATIONS CONTROL CENTRE” which point is 30,824.0 metres North and 30,014.7 metres East of the Survey Department origin of co-ordinates, the boundaries run along successive lines of bearings and distances as under:

<i>Bearing</i>	<i>Distance in metres</i>
121° 50'	27.6 (along the outer face of corrugated wall)
121° 59'	35.7
122° 45'	3.5
212° 02'	10.5 (along the outer face of pillars)
122° 02'	0.1
211° 48'	16.8 (along the outer face of pillars)
125° 21'	0.1 (along the outer face of pillars)
212° 06'	7.7 (along fence and gate)

thence along successive lines of wall of bearings and distances approximately as under:

<i>Bearing</i>	<i>Distance in metres</i>
302° 15'	0.4

THE SCHEDULE — *continued*

<i>First column</i>	<i>Second column</i>
The Authority	Protected Place

212° 00'	24.3
----------	------

299° 29'	26.5
----------	------

thence along the common wall between MRT OPERATIONS CONTROL CENTRE AND MRT HEADQUARTERS on a bearing of approximately 209° 37' for a distance of about 12.9 metres, thence following the exterior limits of the upper floor, the boundaries run along successive lines of bearings and distances approximately as under:

<i>Bearing</i>	<i>Distance in metres</i>
----------------	---------------------------

299° 28'	53.2
----------	------

351° 54'	10.0
----------	------

44° 21'	53.6
---------	------

118° 10'	3.3
----------	-----

to a point where it meets another corner of the building and following the exterior wall of the building and the details at the ground level, the boundaries run along successive lines of bearings and distances approximately as under:

<i>Bearing</i>	<i>Distance in metres</i>
----------------	---------------------------

199° 59'	0.9
----------	-----

209° 59'	0.2 (along outer face of building)
----------	------------------------------------

119° 38'	3.2
----------	-----

31° 06'	2.1 (along gap, outer face of pillars and gate)
---------	---

31° 31'	8.3 (along outer face of pillars and gate)
---------	--

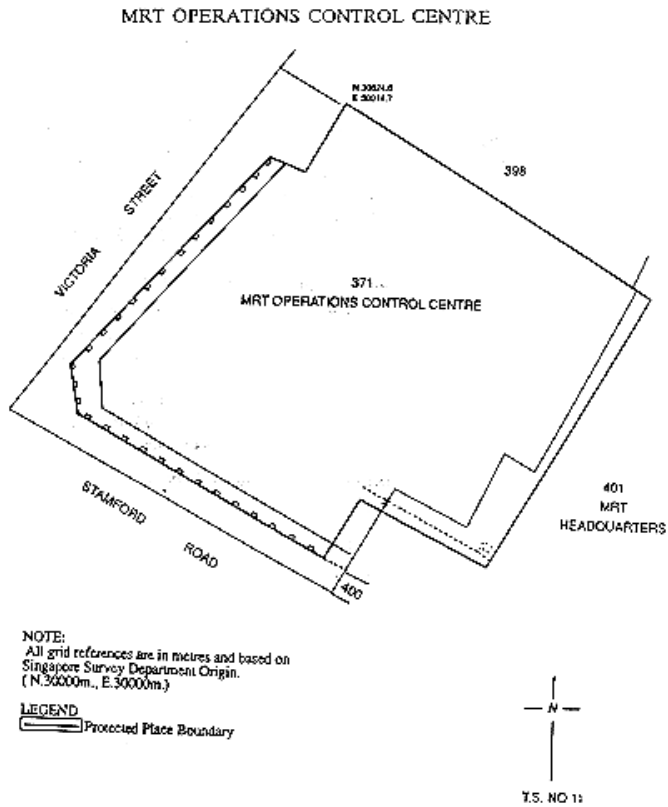
31° 55'	5.0 (along gate and outer face of corrugated wall)
---------	--

to the point of commencement.

THE SCHEDULE — *continued*

<i>First column</i>	<i>Second column</i>
The Authority	Protected Place

The boundaries of “MRT OPERATIONS CONTROL CENTRE” are more particularly delineated in the Plan set out hereunder:



<i>First column</i>	<i>Second column</i>
The Authority	Protected Place
<p>(5) S 398/91 [13.9.91] Managing Director, Singapore MRT Ltd.</p> <p>Managing Director, Singapore MRT Ltd.</p>	<p>(1) [<i>Deleted by S 230/2016 wef 24/05/2016</i>]</p> <p>(2) MRT CHANGI DEPOT</p>

THE SCHEDULE — *continued*

First column
The Authority

Second column
Protected Place

All that area comprised in part of State Land Lots 433, 434, 454, 436, 455, 437, 456, 438, 439, 440, 442, 443, 1727, 1726, 447, 448, 1482, 1483, 1484, 1485, 1486, 1487, 1489, 1490, 1491, 1492, 1493, 1494, 1495, 1496, 1497, 1498, 1499, 1257, 1538, 3666, part of State Reserve and whole of State Land Lots 441, 445, 1844 Mukim No. 27 (BEDOK), occupied by MRT CHANGI DEPOT containing an area of about 162,812 square metres and bounded approximately as follows:

Commencing at the southern-most corner of the aforesaid “MRT CHANGI DEPOT” which point is 34,298.3 metres North and 42,490.7 metres East of the Survey Department origin of co-ordinates, the boundaries run along successive lines of bearings and distances as under:

<i>Bearing</i>	<i>Distance in metres</i>
305° 39'	278.9
307° 23'	231.2
281° 12'	67.8
264° 33'	230.4
308° 52'	89.0
257° 24'	52.7
329° 03'	4.7
20° 06'	2.0
37° 56'	1.8
69° 49'	3.1
80° 04'	3.2
350° 57'	7.1 (along a gate)
260° 42'	9.7
327° 45'	36.8

THE SCHEDULE — *continued*

<i>First column</i>	<i>Second column</i>
The Authority	Protected Place
58° 32'	11.5
328° 34'	9.5 (along a gate)
238° 09'	5.0 (along outer wall of bin centre)
328° 09'	0.2 (along outer wall of bin centre)
237° 18'	6.5
328° 08'	112.7
58° 08'	1.4
328° 20'	4.3
238° 15'	1.4
328° 15'	136.4
68° 59'	17.1
83° 51'	11.6
111° 19'	12.0
122° 39'	29.8
112° 55'	110.5
146° 54'	41.3
130° 55'	21.5
106° 18'	20.2 (along outer wall of concrete deck)
14° 02'	1.2 (along outer wall of concrete deck)
104° 02'	0.4 (along outer wall of concrete deck)
194° 02'	0.3 (along outer wall of concrete deck)
106° 44'	14.8
106° 32'	135.7

THE SCHEDULE — *continued*

<i>First column</i>	<i>Second column</i>
The Authority	Protected Place
106° 34'	193.0
193° 35'	5.6
106° 35'	35.8
126° 54'	3.0
106° 47'	100.8
104° 14'	36.3
106° 26'	89.3
106° 28'	116.7
106° 35'	105.0
127° 29'	26.6
137° 41'	1.6
146° 35'	6.5 (along a gate)
137° 20'	3.0
146° 31'	5.9
152° 25'	33.1
181° 50'	23.6
192° 55'	47.0
199° 44'	105.1
210° 41'	30.3
258° 43'	13.1

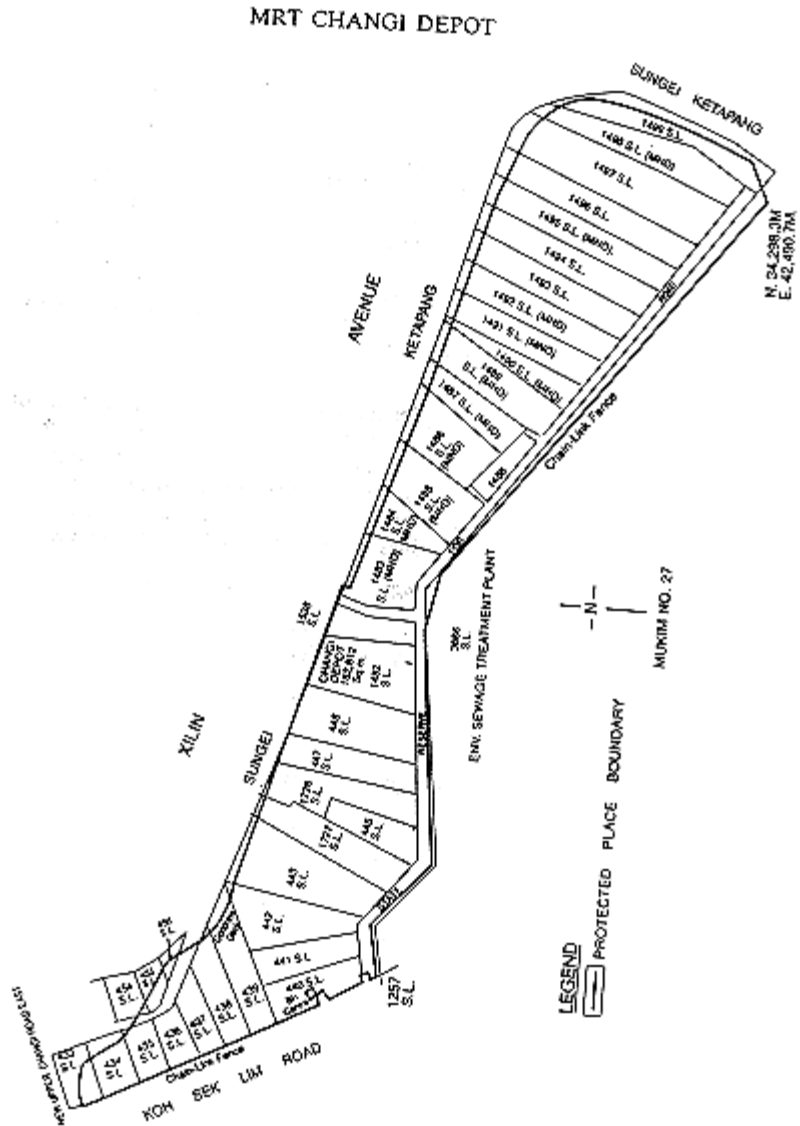
to the point of commencement.

The boundary of “MRT CHANGI DEPOT” is more particularly delineated in the Plan set out hereunder.

THE SCHEDULE — continued

First column
The Authority

Second column
Protected Place



Managing Director, (3) MRT ULU PANDAN DEPOT
Singapore MRT Ltd.

All that area comprised in part of State Land Lots
4051, 2001, 2006, 4049, 206, 4053, 4055, 212, 263,

THE SCHEDULE — *continued*

<i>First column</i>	<i>Second column</i>
The Authority	Protected Place
	262, 259, 261, 260, 253, 2001, 2002, 246, 245, 244, 1982, 240, 239, 430, 297, 298, 299, part of State Reserve and whole of State Land Lots 247, 248, 249, 243, 242, 241, Mukim No. 5 (PANDAN) occupied by MRT ULU PANDAN DEPOT containing an area of about 165,192 square metres and bounded approximately as follows:

Commencing at the western-most corner of the aforesaid “MRT ULU PANDAN” which point is 34,397.0 metres North and 19,645.8 metres East of the Survey Department origin of co-ordinates, the boundaries run along successive lines of bearings and distances as under:

<i>Bearing</i>	<i>Distance in metres</i>
88° 36'	32.8
91° 06'	42.2
89° 56'	38.7
65° 07'	37.6
40° 28'	35.6
34° 34'	36.6
5° 43'	18.3
9° 56'	62.3
354° 25'	9.4
356° 14'	78.7
36° 09'	18.9
1° 34'	76.6
337° 46'	28.6
342° 43'	3.3
336° 46'	35.6
68° 48'	12.5

THE SCHEDULE — *continued*

<i>First column</i>	<i>Second column</i>
The Authority	Protected Place
69° 19'	13.5
349° 18'	22.5
327° 22'	52.2
329° 47'	55.4
342° 45'	19.5
342° 48'	12.3
342° 29'	12.3
344° 56'	4.9
344° 50'	8.8
261° 01'	0.2 (along a wall)
351° 01'	12.2 (along a gate and wall)
81° 01'	0.2 (along a wall)
351° 00'	14.0
350° 52'	14.0
351° 11'	16.8
353° 20'	5.7
359° 38'	5.9
3° 32'	8.8
3° 09'	27.2
3° 33'	13.8
359° 08'	8.7
2° 33'	23.8
6° 41'	10.1
19° 25'	41.8
33° 32'	7.5
45° 56'	8.5
54° 11'	14.9

THE SCHEDULE — *continued*

<i>First column</i>	<i>Second column</i>
The Authority	Protected Place
61° 26'	2.7 (along a wall)
68° 18'	7.4
80° 06'	9.8
89° 29'	9.8
99° 44'	10.1
104° 01'	35.5
97° 33'	45.2
103° 08'	16.1
183° 21'	11.5
179° 32'	63.4
179° 55'	29.9
179° 57'	30.1
180° 02'	33.0
179° 57'	36.5
180° 00'	69.7
180° 02'	59.5
179° 55'	23.3
262° 54'	25.9
180° 00'	22.9
99° 32'	25.9
180° 03'	59.0
180° 00'	54.5
180° 03'	30.0
180° 03'	73.8
179° 53'	57.2
180° 04'	55.3
180° 01'	74.1

THE SCHEDULE — *continued*

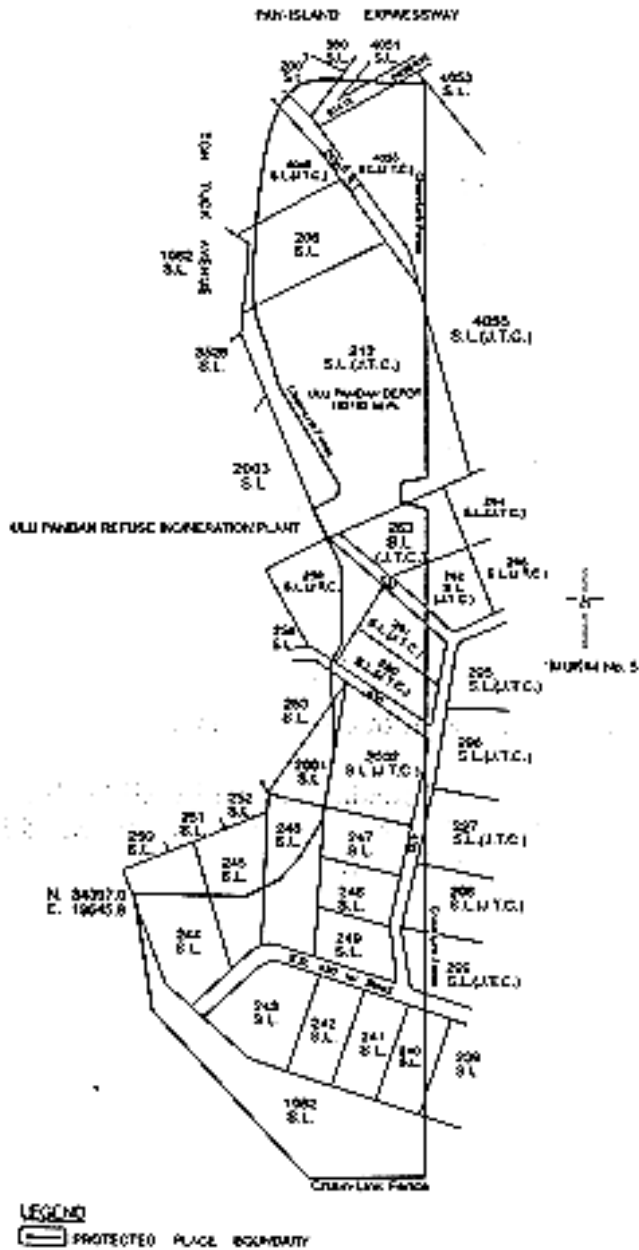
<i>First column</i>	<i>Second column</i>
The Authority	Protected Place
179° 54'	55.8
180° 07'	47.5
179° 58'	56.0
179° 58'	24.3
179° 57'	40.5
180° 02'	47.2
269° 59'	50.8
269° 53'	68.6
316° 46'	39.0
316° 47'	68.9
316° 51'	70.9
316° 45'	50.0
350° 19'	42.5
350° 18'	76.4

to the point of commencement.

The boundary of “MRT ULU PANDAN DEPOT” is more particularly delineated in the Plan set out hereunder.

THE SCHEDULE — *continued*

MRT ULU PANDAN DEPOT



THE SCHEDULE — *continued*

<i>First column</i>	<i>Second column</i>
The Authority	Protected Place
(6) S 399/91 [13.9.91] Director of Prisons.	(1) KHALSA CRESCENT PRISON

All that area comprised in part of State Land Lots 932 and 2006 Mukim No. 13 (Sembawang) occupied by KHALSA CRESCENT PRISON containing an area of about 27,499 square metres and bounded approximately as follows:

Commencing at the northern-most corner of the perimeter fence of the aforesaid KHALSA CRESCENT PRISON which point is 48,265.1 metres North and 22,421.1 metres East of the Survey Department origin of co-ordinates (30,000 metres North, 30,000 metres East), the boundary runs along successive lines of fences of bearings and distances as under:

<i>Bearing</i>	<i>Distance in metres</i>
163° 11'	140.3
257° 23'	8.5
259° 39'	56.9 (partly along a gate)
306° 04'	18.0
206° 50'	8.8
200° 08'	5.6
285° 29'	6.1 (along a gate)
196° 26'	14.0 (partly along a gate)
286° 32'	127.1
238° 23'	4.0
267° 22'	5.4
11° 19'	4.8 (along a gate)
286° 26'	42.5
21° 50'	66.1
73° 36'	114.6

THE SCHEDULE — *continued*

<i>First column</i>	<i>Second column</i>
The Authority	Protected Place

79° 43'	91.3
---------	------

to the point of commencement.

The boundaries of KHALSA CRESCENT PRISON are more particularly delineated and edged pink on Survey Plan No. S.P. 20013 filed in the office of the Chief Surveyor, Singapore.

Director of Prisons.

(2) FALKLAND CENTRE AND ANCILLARIES (PASSAGEWAY AND PARADE SQUARE)

All those areas comprised in parts of State Land Lot 1300 Mukim No 13 (Sembawang) occupied by “FALKLAND CENTRE” and its ancillary facilities namely “PASSAGEWAY” and “PARADE SQUARE” containing areas of about 5,826 square metres, 228 square metres and 3,926 square metres, respectively, and bounded approximately as follows:

(a) FALKLAND CENTRE

Commencing at a northern-most corner of the perimeter fence of the aforesaid “FALKLAND CENTRE” which point is 49,258.3 metres North and 27,240.2 metres East of the Survey Department origin of co-ordinates (30,000 metres North, 30,000 metres East), the boundaries run along successive lines of fences of bearings and distances as under:

<i>Bearing</i>	<i>Distance in metres</i>
119° 06'	41.4
209° 34'	5.9
119° 19'	36.1
37° 52'	3.4
119° 58'	23.5
206° 46'	2.9

THE SCHEDULE — *continued*

<i>First column</i>	<i>Second column</i>
The Authority	Protected Place
117° 44'	11.9
202° 20'	21.7
204° 10'	1.2 (along a gate)
202° 35'	4.0 (along a gate)
297° 51'	5.7
210° 55'	42.9
301° 33'	56.6
297° 28'	0.9 (along a gate)
302° 57'	1.9
18° 40'	39.2
9° 59'	7.8
299° 28'	43.0
34° 22'	26.9

to the point of commencement.

(b) PASSAGEWAY ANCILLARY TO
FALKLAND CENTRE

Commencing at a northern-most corner of the perimeter fence of the aforesaid "PASSAGEWAY ANCILLARY" to "FALKLAND CENTRE" which point is 49,166.6 metres North and 27,246.6 metres East of the Survey Department origin of coordinates (30,000 metres North, 30,000 metres East), the boundaries run along successive lines of fences of bearings and distances as under:

<i>Bearing</i>	<i>Distance in metres</i>
124° 42'	0.3
114° 49'	2.4 (along a gate)
109° 22'	0.8
199° 46'	33.8

THE SCHEDULE — *continued*

<i>First column</i>	<i>Second column</i>
The Authority	Protected Place
190° 02'	17.6
208° 16'	1.1 (along a gate)
211° 23'	0.7
294° 23'	0.8
300° 09'	2.4 (along a gate)
300° 06'	0.6
298° 10'	2.8
19° 47'	51.2
35° 12'	1.1

to the point of commencement; and

(c) PARADE SQUARE ANCILLARY TO
FALKLAND CENTRE

Commencing at a northern-most corner of perimeter fence of the aforesaid “PARADE SQUARE ANCILLARY TO FALKLAND CENTRE” which point is 49,116.3 metres North and 27,231.1 metres East of the Survey Department origin of co-ordinates (30,000 metres North, 30,000 metres East), the boundaries run along successive lines of fences of bearings and distances as under:

<i>Bearing</i>	<i>Distance in metres</i>
124° 06'	0.6
120° 09'	2.4 (along a gate)
114° 23'	0.8
119° 57'	83.4
211° 18'	45.4
300° 07'	86.2
30° 08'	45.1

to the point of commencement.

THE SCHEDULE — *continued**First column*

The Authority

Second column

Protected Place

The boundaries of “FALKLAND CENTRE” together with those of the “PASSAGEWAY” and “PARADE SQUARE ANCILLARY” to the “FALKLAND CENTRE” are more particularly delineated and edged pink on Survey Plan No. 20015 filed in the office of the Chief Surveyor, Singapore.

Director of Prisons

(3) SELARANG PARK CENTRE

All that area comprised in part of State Land Lot 1610 MUKIM NO. 31 (CHANGI) occupied by “SELARANG PARK CENTRE” containing an area of about 1,549 square metres and bounded approximately as follows:

Commencing at the northern-most point of the aforesaid “SELARANG PARK CENTRE” which point is 39,445.7 metres North and 44,150.4 metres East of the Survey Department origin of co-ordinates (30,000 metres North, 30,000 metres East), the boundary runs along successive lines of fences of bearings and distances as under:

<i>Bearing</i>	<i>Distance in metres</i>
108° 39'	30.0 (partly along a gate)
103° 28'	10.1 (along building wall)
184° 17'	0.1 (along building wall)
105° 35'	1.8 (along a gate)
103° 15'	17.7
157° 17'	20.2 (partly along a gate)
158° 29'	3.4
165° 14'	2.4
182° 47'	3.3
277° 45'	33.3

THE SCHEDULE — *continued*

<i>First column</i>	<i>Second column</i>
The Authority	Protected Place
283° 05'	2.0
283° 29'	10.1 (along building wall)
10° 32'	0.8 (along building wall)
319° 38'	36.9
13° 47'	7.9

to the point of commencement.

The boundary of “SELARANG PARK CENTRE” are more particularly delineated and edged pink on Survey Plan No. S.P. 30016 filed in the office of the Chief Surveyor, Singapore.

(4) [*Deleted by S 19/2013 wef 16/01/2013*]

Director of Prisons.

(5) TANAH MERAH CENTRE

All that area comprised in part of State Land Lot 341-2 MUKIM NO. 31 (CHANGI) occupied by “TANAH MERAH CENTRE” containing an area of about 10,819 square metres and bounded approximately as follows:

Commencing at the northern-most point of the aforesaid “TANAH MERAH CENTRE” which point is 39,098.0 metres North and 44,308.9 metres East of the Survey Department origin of co-ordinates (30,000 metres North, 30,000 metres East), the boundaries run along successive lines of fences of bearings and distances as under:

<i>Bearing</i>	<i>Distance in metres</i>
146° 53'	26.2
236° 02'	46.5
325° 49'	3.6
236° 50'	18.4
165° 03'	50.9

THE SCHEDULE — *continued*

<i>First column</i>		<i>Second column</i>
The Authority		Protected Place
	174° 22'	3.6
	161° 03'	8.7
	179° 11'	30.2
	94° 49'	32.3
	184° 31'	63.9
	226° 17'	58.7
	323° 45'	12.4
	325° 53'	5.9
	331° 22'	3.0
	340° 04'	3.0
	345° 04'	3.0
	350° 38'	3.1
	359° 59'	6.0
	6° 32'	3.0
	13° 51'	3.1
	15° 24'	40.0
	7° 07'	6.0
	359° 03'	11.2
	21° 25'	2.8
	1° 36'	7.4 (along a gate)
	339° 03'	4.5
	272° 44'	3.5
	2° 39'	5.6
	322° 10'	44.3
	320° 16'	14.0
	326° 57'	13.5
	236° 38'	3.0

THE SCHEDULE — *continued*

<i>First column</i>	<i>Second column</i>
The Authority	Protected Place
314° 57'	3.7
319° 59'	4.0 (along a gate)
330° 17'	3.2
322° 35'	6.2
55° 57'	10.2
48° 35'	4.2
36° 20'	5.0
43° 59'	2.0
47° 23'	2.6
55° 28'	2.5
59° 59'	1.9
58° 48'	16.7
48° 28'	15.1
47° 45'	7.2
57° 50'	32.9
61° 42'	11.9
64° 52'	13.1

to the point of commencement.

The boundaries of “TANAH MERAH CENTRE” are more particularly delineated and edged pink on Survey Plan No. S.P.30013 filed in the office of the Chief Surveyor, Singapore.

Director of Prisons.

(6) PRISON HEADQUARTERS

All that areas comprised in part of State Land Lots 341-1, 341-2, 341-4, 365, 1312 and part of UPPER CHANGI ROAD NORTH Mukim No. 31 (CHANGI), occupied by “PRISON HEADQUARTERS” containing an area of about 42,236 square metres and bounded approximately as follows:

THE SCHEDULE — *continued**First column**Second column*

The Authority

Protected Place

Commencing at the northern-most point of the aforesaid “PRISON HEADQUARTERS” which point is 39,224.7 metres North and 44,614.2 metres East of the Survey Department origin of co-ordinates (30,000 metres North, 30,000 metres East), the boundaries run along successive lines of fences of bearings and distances as under:

<i>Bearing</i>	<i>Distance in metres</i>
122° 52'	3.1
169° 51'	20.0
211° 38'	5.2 (along a gate)
124° 53'	5.2
160° 07'	32.4
88° 09'	11.7
170° 13'	21.2
193° 33'	52.5
114° 27'	4.7
202° 25'	2.8
187° 21'	54.3
238° 31'	25.2
203° 04'	42.3
202° 59'	100.9
293° 02'	86.7
315° 32'	28.2
226° 44'	11.4
315° 48'	44.9
47° 16'	37.7
318° 21'	17.9

THE SCHEDULE — *continued*

<i>First column</i>	<i>Second column</i>
The Authority	Protected Place
1° 01'	10.0 (across a gap)
58° 08'	15.9
38° 31'	23.4
327° 17'	76.4
68° 34'	5.8

to meet a point at the corner of a garden wall, thence along the outer face of the garden wall on successive lines of fences of bearings and distances as under:

<i>Bearing</i>	<i>Distance in metres</i>
340° 15'	0.2
70° 57'	3.7
159° 34'	0.6
68° 51'	0.4
158° 23'	0.3

to meet a gate, thence along the said gate on a line of bearing of 85° 34' for a distance of 9.1 metres to meet a point at the corner of a pillar on successive lines of fences of bearings and distances as under:

<i>Bearing</i>	<i>Distance in metres</i>
351° 04'	0.3
79° 27'	0.3

to meet a point along another garden wall, thence partly along the outer face of the said garden wall on a line of bearing of 9° 39' for a distance of 0.8 metres to meet another point, thence across the garden wall on a line of bearing of 83° 55' for a distance of 0.1 metre to meet a fence, thence along successive lines of fences of bearings and distances as under:

THE SCHEDULE — *continued*

<i>First column</i>	<i>Second column</i>	
The Authority	Protected Place	
	<i>Bearing</i>	<i>Distance in metres</i>
	83° 55'	26.7
	80° 46'	24.1
	78° 30'	19.7
	70° 09'	7.3
	61° 29'	31.4
	45° 18'	21.0
	355° 55'	3.0
	47° 50'	13.7
	43° 34'	21.2
	37° 27'	47.8
	54° 58'	4.9

to the point of commencement.

The boundaries of “PRISON HEADQUARTERS” are more particularly delineated and edged pink on Survey Plan No. S.P.30014 filed in the office of the Chief Surveyor, Singapore.

Director of Prisons.

(7) CLEMENTI CENTRE

All that area comprised in part of State Land Lot 79-4 MUKIM No. 3 (PASIR PANJANG) occupied by “CLEMENTI CENTRE” containing an area of about 5,195 square metres and bounded approximately as follows:

Commencing at the northern-most point of the aforesaid “CLEMENTI CENTRE” which point is 30,372.2 metres North and 21,556.0 metres East of the Survey Department origin of co-ordinates (30,000 metres North, 30,000 metres East), the boundaries run along successive lines of fences of bearings and distances as under:

THE SCHEDULE — *continued*

<i>First column</i>	<i>Second column</i>	
The Authority	<i>Bearing</i>	<i>Distance in metres</i>
	Protected Place	
	112° 46'	36.0
	195° 06'	42.5
	195° 58'	63.7
	288° 09'	17.3
	288° 40'	5.1 (along a gate)
	288° 26'	36.1
	23° 38'	39.5
	42° 10'	6.7
	28° 25'	64.3

to the point of commencement.

The boundaries of “CLEMENTI CENTRE” are more particularly delineated and edged pink on Survey Plan No. S.P. 40011 filed in the office of the Chief Surveyor, Singapore.

[S 19/2013 wef 16/01/2013]

<i>First column</i>	<i>Second column</i>	
The Authority	Protected Place	
(7) S 422/91 [27.9.91] Chief Executive Officer (VP/GM), Electronic Engineering Limited	SINGAPORE ENGINEERING PREMISES.	ELECTRONIC & (PRIVATE) LIMITED
	Singapore	(Private)

All that area comprised in part of Lot 8882 No. 18 (ANG MO KIO), occupied by “SINGAPORE ELECTRONIC & ENGINEERING (PRIVATE) LIMITED PREMISES” containing an area of about 14,760 square metres and bounded approximately as follows:

THE SCHEDULE — *continued**First column**Second column*

The Authority

Protected Place

Commencing at a point on the northern-most corner of the perimeter fence of the aforesaid “SINGAPORE ELECTRONIC & ENGINEERING (PRIVATE) LIMITED PREMISES” which point is 41,566.9 metres North and 29,828.7 metres East of the Survey Department origin of co-ordinates (N 30,000m, E. 30,000 m), the boundaries run along successive lines of fence of bearings and distances as under:

<i>Bearing</i>	<i>Distance in metres</i>
94° 47'	6.0
100° 08'	6.0
111° 08'	6.2
120° 01'	6.0
126° 29'	5.7
135° 50'	5.8
142° 49'	6.0
150° 14'	5.9
162° 53'	6.0
169° 54'	6.2
179° 00'	6.2
184° 50'	63.6
267° 19'	32.6
267° 33'	107.6 (along two successive gates)
353° 41'	2.0
356° 03'	6.6 (along a gate)
359° 28'	0.9

THE SCHEDULE — *continued*

First column

Second column

The Authority

Protected Place

to meet a building wall, thence along successive lines following the building wall of bearings and distances as under:

<i>Bearing</i>	<i>Distance in metres</i>
269° 06'	0.1
359° 06'	0.1
272° 19'	0.1
352° 11'	0.3
82° 11'	0.1
357° 11'	2.5 (successively along a wall, a gate and a wall)
269° 59'	0.1
356° 14'	0.1

to meet a fence, thence along successive lines of fence of bearings and distances as under:

<i>Bearing</i>	<i>Distance in metres</i>
267° 47'	1.7
353° 59'	18.8
351° 32'	21.1

to meet a wall, thence along successive lines following the wall of bearings and distances as under:

<i>Bearing</i>	<i>Distance in metres</i>
258° 14'	0.2
348° 14'	6.5

to meet a gate, thence along a line following the gate on an approximate bearing of 347° 56' and for a distance of approximately 10.7 metres to meet a wall, thence along successive lines

THE SCHEDULE — *continued*

<i>First column</i>	<i>Second column</i>																
The Authority	Protected Place																
	following the wall of bearings and distances as under:																
	<table border="0"> <thead> <tr> <th style="text-align: left;"><i>Bearing</i></th> <th style="text-align: left;"><i>Distance in metres</i></th> </tr> </thead> <tbody> <tr> <td>347° 03'</td> <td>12.8</td> </tr> <tr> <td>31° 31'</td> <td>10.3</td> </tr> <tr> <td>83° 51'</td> <td>2.5</td> </tr> <tr> <td>173° 51'</td> <td>0.1</td> </tr> </tbody> </table>	<i>Bearing</i>	<i>Distance in metres</i>	347° 03'	12.8	31° 31'	10.3	83° 51'	2.5	173° 51'	0.1						
<i>Bearing</i>	<i>Distance in metres</i>																
347° 03'	12.8																
31° 31'	10.3																
83° 51'	2.5																
173° 51'	0.1																
	to meet a fence, thence along successive lines of fence of bearings and distances as under:																
	<table border="0"> <thead> <tr> <th style="text-align: left;"><i>Bearing</i></th> <th style="text-align: left;"><i>Distance in metres</i></th> </tr> </thead> <tbody> <tr> <td>83° 36'</td> <td>33.3</td> </tr> <tr> <td>166° 25'</td> <td>0.6</td> </tr> <tr> <td>78° 31'</td> <td>15.3</td> </tr> <tr> <td>351° 01'</td> <td>0.7</td> </tr> <tr> <td>72° 56'</td> <td>36.5</td> </tr> <tr> <td>80° 58'</td> <td>13.0</td> </tr> <tr> <td>82° 46'</td> <td>15.4</td> </tr> </tbody> </table>	<i>Bearing</i>	<i>Distance in metres</i>	83° 36'	33.3	166° 25'	0.6	78° 31'	15.3	351° 01'	0.7	72° 56'	36.5	80° 58'	13.0	82° 46'	15.4
<i>Bearing</i>	<i>Distance in metres</i>																
83° 36'	33.3																
166° 25'	0.6																
78° 31'	15.3																
351° 01'	0.7																
72° 56'	36.5																
80° 58'	13.0																
82° 46'	15.4																
	to the point of commencement.																
	The boundaries of “SINGAPORE ELECTRONIC & ENGINEERING (PRIVATE) LIMITED PREMISES” are more particularly delineated and edged pink on survey Plan No. 20009 filed in the office of the Chief Surveyor, Singapore.																

*First column**Second column*(8) [*Deleted by S 399/2017 wef 19/07/2017*]

THE SCHEDULE — *continued*

First column

Second column

The Authority

Protected Place

(9) S 525/91 [29.11.91]

Senior Terminals Security
Manager, PSA Corporation
Limited

1. TANJONG PAGAR TERMINAL AND
KEPPEL TERMINAL.

All that area occupied by “TANJONG PAGAR TERMINAL AND KEPPEL TERMINAL” containing an area of approximately 1,809,270 square metres and bounded by Telok Blangah Road, Keppel Road, East Coast Parkway, East Lagoon and Keppel Harbour.

The boundary commences at the westernmost corner of the aforesaid “TANJONG PAGAR TERMINAL AND KEPPEL TERMINAL” which point bears the co-ordinates North 27,288.561 metres and East 26,954.409 metres of the Singapore Land Authority SVY 21 Datum and runs approximately as follows:

<i>Northing</i>	<i>Easting</i>
27,288.561	26,954.409
27,315.175	26,954.984
27,318.082	26,954.964
27,337.162	26,963.051
27,351.153	26,965.498
27,358.912	26,970.195
27,361.688	26,971.963
27,372.455	26,981.430
27,373.654	26,983.049
27,377.914	26,981.702
27,378.740	26,981.327
27,381.150	26,981.504
27,383.022	26,985.973
27,379.215	26,987.591

THE SCHEDULE — *continued*

<i>First column</i>		<i>Second column</i>
The Authority		Protected Place
	27,379.415	26,988.301
	27,385.683	26,994.936
	27,393.209	27,004.604
	27,398.341	27,012.101
	27,400.033	27,015.329
	27,413.454	27,014.838
	27,428.445	27,041.817
	27,431.563	27,080.573
	27,464.607	27,140.062
	27,468.036	27,138.109
	27,468.228	27,138.316
	27,469.051	27,137.767
	27,560.185	27,301.680
	27,600.507	27,283.438
	27,629.183	27,316.940
	27,613.965	27,329.420
	27,639.169	27,359.872
	27,654.806	27,346.576
	27,661.056	27,353.573
	27,662.665	27,353.236
	27,665.939	27,350.309
	27,667.169	27,351.686
	27,675.586	27,339.379
	27,678.822	27,334.349
	27,685.652	27,323.978
	27,693.994	27,314.921
	27,697.606	27,311.572

THE SCHEDULE — *continued*

<i>First column</i>		<i>Second column</i>
The Authority		Protected Place
	27,706.728	27,313.336
	27,720.638	27,319.210
	27,725.603	27,322.394
	27,732.500	27,328.193
	27,740.425	27,336.280
	27,754.637	27,351.036
	27,774.702	27,371.864
	27,788.815	27,386.922
	27,798.287	27,394.565
	27,809.373	27,399.588
	27,821.365	27,401.671
	27,833.495	27,400.681
	27,838.901	27,404.912
	27,866.770	27,437.288
	27,876.639	27,445.861
	27,884.427	27,451.484
	27,911.673	27,469.999
	27,929.623	27,486.251
	27,970.834	27,522.963
	27,993.227	27,544.716
	28,016.965	27,570.518
	28,034.198	27,589.873
	28,084.594	27,644.829
	28,097.615	27,660.711
	28,105.347	27,670.773
	28,120.318	27,696.919
	28,137.003	27,715.711

THE SCHEDULE — *continued*

<i>First column</i>		<i>Second column</i>
The Authority		Protected Place
	28,149.812	27,727.424
	28,165.873	27,746.083
	28,168.250	27,751.162
	28,169.435	27,752.830
	28,177.733	27,758.767
	28,199.879	27,786.439
	28,200.750	27,787.858
	28,207.214	27,795.396
	28,209.233	27,798.145
	28,244.092	27,842.131
	28,256.447	27,862.379
	28,260.953	27,866.487
	28,269.949	27,876.876
	28,277.875	27,888.550
	28,271.185	27,896.661
	28,251.772	27,920.335
	28,254.900	27,923.267
	28,237.421	27,944.783
	28,224.528	27,952.073
	28,216.033	27,961.828
	28,217.055	27,981.487
	28,217.382	27,988.546
	28,219.238	28,041.733
	28,293.862	28,039.157
	28,296.737	28,123.789
	28,292.988	28,123.971
	28,293.382	28,134.752

THE SCHEDULE — *continued*

<i>First column</i>	<i>Second column</i>
The Authority	Protected Place
	28,293.826
	28,147.079
	28,293.173
	28,147.103
	28,293.181
	28,148.450
	28,293.888
	28,148.515
	28,294.433
	28,162.779
	28,295.205
	28,180.232
	28,295.388
	28,183.873
	28,295.663
	28,188.835
	28,296.103
	28,195.700
	28,296.384
	28,199.704
	28,297.097
	28,209.756
	28,297.371
	28,216.992
	28,297.719
	28,225.824
	28,296.491
	28,228.070
	28,297.177
	28,237.342
	28,295.977
	28,238.054
	28,294.545
	28,238.756
	28,292.492
	28,239.203
	28,290.449
	28,239.461
	28,280.507
	28,239.855
	28,279.301
	28,242.334
	28,277.559
	28,244.773
	28,275.173
	28,246.566
	28,272.261
	28,247.480
	28,251.124
	28,248.225
	28,251.192
	28,253.853
	28,241.668
	28,254.206

THE SCHEDULE — *continued*

<i>First column</i>		<i>Second column</i>
The Authority		Protected Place
	28,206.440	28,255.380
	28,213.594	28,446.423
	28,214.010	28,447.397
	28,214.038	28,448.623
	28,213.688	28,449.334
	28,213.870	28,454.811
	28,214.442	28,454.787
	28,214.493	28,456.136
	28,213.919	28,456.155
	28,220.074	28,625.930
	28,220.274	28,625.923
	28,220.316	28,627.268
	28,220.099	28,627.276
	28,220.351	28,633.383
	28,222.773	28,695.635
	28,236.930	28,695.411
	28,260.479	28,694.641
	28,266.305	28,688.483
	28,290.861	28,687.516
	28,292.144	28,716.138
	28,281.504	28,716.614
	28,281.578	28,719.446
	28,276.450	28,719.571
	28,276.695	28,728.098
	28,278.482	28,760.958
	28,279.741	28,770.186
	28,283.471	28,781.374

Protected Places (Consolidation)

THE SCHEDULE — *continued*

<i>First column</i>		<i>Second column</i>
The Authority		Protected Place
	28,291.727	28,796.185
	28,293.378	28,798.955
	28,294.678	28,801.702
	28,304.683	28,830.095
	28,143.519	28,902.777
	28,143.519	28,907.018
	28,143.793	28,911.505
	28,144.630	28,915.387
	28,146.665	28,918.799
	28,149.861	28,922.202
	28,153.709	28,924.848
	28,158.030	28,926.615
	28,188.743	28,912.941
	28,203.801	28,947.700
	28,176.248	28,960.033
	28,179.347	28,966.446
	28,182.609	28,973.196
	28,189.526	28,988.965
	28,190.334	28,990.765
	28,187.192	28,992.133
	28,162.044	29,003.283
	28,158.511	29,007.277
	28,156.829	29,009.839
	28,155.694	29,012.622
	28,155.289	29,015.499
	28,155.275	29,021.272
	28,157.888	29,028.168

THE SCHEDULE — *continued*

<i>First column</i>		<i>Second column</i>
The Authority		Protected Place
	28,160.179	29,030.537
	28,182.444	29,052.492
	28,206.369	29,075.512
	28,309.629	29,175.792
	28,310.138	29,176.432
	28,314.891	29,185.470
	28,319.268	29,193.790
	28,322.874	29,204.336
	28,323.369	29,221.990
	28,323.790	29,236.872
	28,324.192	29,251.881
	28,324.923	29,279.653
	28,325.327	29,296.683
	28,323.684	29,308.619
	28,321.863	29,321.685
	28,320.386	29,332.813
	28,318.867	29,344.285
	28,317.647	29,353.526
	28,316.331	29,362.723
	28,312.790	29,398.566
	28,312.187	29,404.489
	28,309.771	29,415.319
	28,307.354	29,426.153
	28,304.939	29,436.987
	28,298.788	29,436.506
	28,299.193	29,432.366
	28,282.821	29,418.139

Protected Places (Consolidation)

CAP. 256, O 4]

Order

[1993 Ed. p. 57

THE SCHEDULE — *continued*

<i>First column</i>	<i>Second column</i>
The Authority	Protected Place
28,228.771	29,478.082
28,234.171	29,483.259
28,253.850	29,501.045
28,277.983	29,474.291
28,297.214	29,452.972
28,298.156	29,446.858
28,299.942	29,444.978
28,303.939	29,444.453
28,301.832	29,456.225
28,299.941	29,467.512
28,298.479	29,476.076
28,296.616	29,487.504
28,295.294	29,495.946
28,293.933	29,504.895
28,292.127	29,516.752
28,290.768	29,525.688
28,289.633	29,534.551
28,288.583	29,546.403
28,288.035	29,555.331
28,287.783	29,564.309
28,287.909	29,576.266
28,288.240	29,585.294
28,288.778	29,594.177
28,289.957	29,606.242
28,291.121	29,615.187
28,292.530	29,624.104
28,294.830	29,635.814

THE SCHEDULE — *continued*

<i>First column</i>		<i>Second column</i>
The Authority		Protected Place
	28,296.857	29,644.655
	28,299.093	29,653.331
	28,302.434	29,664.741
	28,305.202	29,673.364
	28,308.153	29,681.860
	28,311.909	29,691.227
	28,316.751	29,702.180
	28,320.679	29,710.418
	28,324.761	29,718.301
	28,330.347	29,728.768
	28,334.631	29,736.812
	28,339.071	29,744.630
	28,344.998	29,755.060
	28,349.449	29,762.919
	28,353.847	29,770.663
	28,359.742	29,781.089
	28,364.208	29,788.978
	28,368.630	29,796.768
	28,374.561	29,807.247
	28,379.015	29,815.090
	28,383.481	29,822.974
	28,389.232	29,833.618
	28,393.251	29,841.690
	28,396.958	29,849.819
	28,401.728	29,860.845
	28,405.176	29,869.131
	28,408.404	29,877.492

THE SCHEDULE — *continued*

<i>First column</i>			<i>Second column</i>
The Authority			Protected Place
	28,411.556		29,886.317
	28,415.369		29,897.567
	28,417.918		29,906.246
	28,420.767		29,916.774
	28,420.658		29,917.023
	28,382.205		30,005.821
	28,381.488		30,005.599
	28,370.914		30,029.930
	27,341.159		30,031.019
	27,341.122		29,995.624
	27,341.447		29,991.642
	27,285.471		29,930.011
	27,112.430		30,086.125
	27,111.065		30,086.485
	27,110.223		30,086.136
	27,109.371		30,085.124
	27,110.173		30,084.349
	27,030.637		29,996.286
	27,031.421		29,995.579
	27,031.529		29,995.161
	27,030.853		29,994.363
	27,029.943		29,991.865
	27,029.860		29,988.866
	27,031.261		29,986.731
	27,033.963		29,984.310
	27,033.990		29,983.887
	27,288.386		29,754.485

THE SCHEDULE — *continued*

<i>First column</i>		<i>Second column</i>
The Authority		Protected Place
	27,532.704	29,533.896
	27,701.845	29,381.276
	27,705.730	29,377.742
	27,569.127	29,226.270
	27,569.506	29,225.869
	27,563.658	29,219.389
	27,277.850	29,446.321
	27,220.347	29,491.732
	27,218.182	29,492.958
	27,215.737	29,493.562
	27,213.356	29,493.486
	27,210.806	29,492.610
	27,210.631	29,492.835
	27,122.366	29,410.332
	27,122.578	29,410.121
	27,121.056	29,407.724
	27,120.565	29,405.151
	27,121.014	29,402.551
	27,122.474	29,400.290
	27,176.869	29,341.473
	27,792.537	28,681.009
	27,793.534	28,673.972
	27,794.609	28,664.939
	27,795.666	28,652.547
	27,796.732	28,639.004
	27,797.102	28,625.791
	27,796.841	28,612.939

THE SCHEDULE — *continued*

<i>First column</i>	<i>Second column</i>
The Authority	Protected Place
27,769.631	27,860.065
27,764.032	27,854.695
27,720.028	27,776.643
27,657.202	27,665.809
27,652.809	27,657.386
27,652.547	27,657.533
27,512.874	27,411.859
27,404.963	27,220.955
27,293.460	27,024.529
27,292.603	27,022.266
27,288.662	27,007.212
27,288.344	27,004.825
27,288.511	26,975.614

to the point of commencement and are delineated in the Plan set out below.

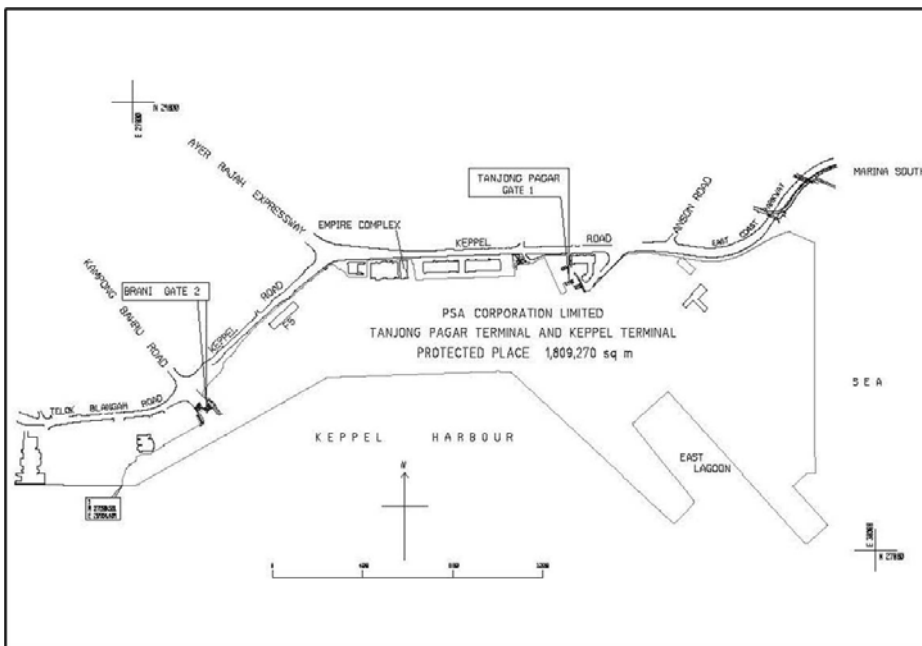
THE SCHEDULE — *continued*

First column

Second column

The Authority

Protected Place



Director (Corporate Development), PSA Corporation Limited

2. Deleted by S 620/2009 wef 15/12/2009.

Senior Terminals Security Manager, PSA Corporation Limited

3. SEMBAWANG WHARVES.

All that area occupied by “SEMBAWANG WHARVES” containing an area of approximately 312,500 square metres and bounded by Fiji Road, Jamaica Road, Sembawang Shipyard, H M Dockyard, Stores Road, Stores Basin, Sembawang Park and Deptford Road.

The boundary commences at the westernmost corner of the aforesaid “SEMBAWANG WHARVES” which point bears the co-ordinates North 49,342.274 metres and East

THE SCHEDULE — *continued*

<i>First column</i>	<i>Second column</i>																																																
The Authority	Protected Place																																																
	27,216.569 metres of the Singapore Land Authority SVY 21 Datum and runs approximately as follows:																																																
	<table border="1"> <thead> <tr> <th><i>Northing</i></th> <th><i>Easting</i></th> </tr> </thead> <tbody> <tr><td>49,342.274</td><td>27,216.569</td></tr> <tr><td>49,383.623</td><td>27,239.331</td></tr> <tr><td>49,386.861</td><td>27,240.369</td></tr> <tr><td>49,406.042</td><td>27,251.743</td></tr> <tr><td>49,408.954</td><td>27,256.526</td></tr> <tr><td>49,439.994</td><td>27,314.658</td></tr> <tr><td>49,470.282</td><td>27,370.933</td></tr> <tr><td>49,478.734</td><td>27,386.622</td></tr> <tr><td>49,485.217</td><td>27,398.838</td></tr> <tr><td>49,490.240</td><td>27,408.064</td></tr> <tr><td>49,489.903</td><td>27,407.978</td></tr> <tr><td>49,486.849</td><td>27,412.203</td></tr> <tr><td>49,495.094</td><td>27,426.829</td></tr> <tr><td>49,506.771</td><td>27,447.666</td></tr> <tr><td>49,522.803</td><td>27,476.531</td></tr> <tr><td>49,558.642</td><td>27,542.619</td></tr> <tr><td>49,584.126</td><td>27,589.381</td></tr> <tr><td>49,563.317</td><td>27,625.639</td></tr> <tr><td>49,545.591</td><td>27,656.885</td></tr> <tr><td>49,524.579</td><td>27,693.334</td></tr> <tr><td>49,512.606</td><td>27,714.162</td></tr> <tr><td>49,506.148</td><td>27,720.383</td></tr> <tr><td>49,498.448</td><td>27,723.726</td></tr> </tbody> </table>	<i>Northing</i>	<i>Easting</i>	49,342.274	27,216.569	49,383.623	27,239.331	49,386.861	27,240.369	49,406.042	27,251.743	49,408.954	27,256.526	49,439.994	27,314.658	49,470.282	27,370.933	49,478.734	27,386.622	49,485.217	27,398.838	49,490.240	27,408.064	49,489.903	27,407.978	49,486.849	27,412.203	49,495.094	27,426.829	49,506.771	27,447.666	49,522.803	27,476.531	49,558.642	27,542.619	49,584.126	27,589.381	49,563.317	27,625.639	49,545.591	27,656.885	49,524.579	27,693.334	49,512.606	27,714.162	49,506.148	27,720.383	49,498.448	27,723.726
<i>Northing</i>	<i>Easting</i>																																																
49,342.274	27,216.569																																																
49,383.623	27,239.331																																																
49,386.861	27,240.369																																																
49,406.042	27,251.743																																																
49,408.954	27,256.526																																																
49,439.994	27,314.658																																																
49,470.282	27,370.933																																																
49,478.734	27,386.622																																																
49,485.217	27,398.838																																																
49,490.240	27,408.064																																																
49,489.903	27,407.978																																																
49,486.849	27,412.203																																																
49,495.094	27,426.829																																																
49,506.771	27,447.666																																																
49,522.803	27,476.531																																																
49,558.642	27,542.619																																																
49,584.126	27,589.381																																																
49,563.317	27,625.639																																																
49,545.591	27,656.885																																																
49,524.579	27,693.334																																																
49,512.606	27,714.162																																																
49,506.148	27,720.383																																																
49,498.448	27,723.726																																																

THE SCHEDULE — *continued*

<i>First column</i>		<i>Second column</i>
The Authority		Protected Place
	49,490.251	27,723.287
	49,367.320	27,654.402
	49,327.834	27,633.993
	49,324.491	27,634.413
	49,324.480	27,634.615
	49,321.503	27,639.675
	49,319.456	27,642.940
	49,318.621	27,644.951
	49,306.532	27,666.063
	49,309.041	27,667.707
	49,362.714	27,698.153
	49,352.393	27,716.567
	49,345.243	27,729.151
	49,337.805	27,742.036
	49,336.487	27,741.436
	49,335.211	27,742.644
	49,332.835	27,746.785
	49,335.447	27,748.622
	49,328.286	27,761.364
	49,323.858	27,769.138
	49,299.424	27,811.861
	49,298.193	27,814.483
	49,298.921	27,816.904
	49,294.152	27,826.134
	49,418.344	27,896.971
	49,436.914	27,907.607
	49,432.845	27,915.070

Protected Places (Consolidation)

CAP. 256, O 4]

Order

[1993 Ed. p. 65

THE SCHEDULE — *continued*

<i>First column</i>		<i>Second column</i>
The Authority		Protected Place
	49,428.228	27,923.827
	49,409.221	27,957.193
	49,402.618	27,953.432
	49,397.173	27,962.990
	49,403.777	27,966.751
	49,394.125	27,983.695
	49,331.379	27,947.978
	49,310.869	27,936.303
	49,270.023	27,913.052
	49,144.539	27,840.798
	49,135.868	27,855.999
	49,120.928	27,847.477
	49,060.531	27,953.363
	49,204.882	28,035.533
	49,490.843	28,198.423
	49,523.064	28,216.814
	49,523.813	28,217.620
	49,524.347	28,218.694
	49,534.917	28,277.248
	49,532.348	28,277.649
	49,531.656	28,282.298
	49,531.189	28,292.387
	49,530.623	28,302.471
	49,528,379	28,312.319
	49,526.356	28,322.520
	49,524.826	28,332.200
	49,524.009	28,341.565

THE SCHEDULE — *continued*

<i>First column</i>	<i>Second column</i>	
The Authority	Protected Place	
	49,512.554	28,332.037
	49,505.888	28,331.358
	49,502.035	28,329.033
	49,494.968	28,331.228
	49,464.222	28,319.241
	49,459.292	28,316.802
	49,456.660	28,316.198
	49,443.757	28,311.595
	49,411.690	28,318.489
	49,391.358	28,325.782
	49,320.824	28,294.648
	49,287.256	28,262.325
	49,216.070	28,194.101
	49,206.827	28,190.555
	49,190.406	28,184.503
	49,170.057	28,176.685
	49,119.571	28,157.523
	49,039.203	28,127.767
	49,038.474	28,125.064
	49,034.967	28,121.225
	49,019.994	28,114.291
	48,997.663	28,103.972
	48,986.153	28,096.359
	48,946.197	28,086.729
	48,891.087	28,037.195
	48,890.310	28,015.309
	48,890.263	28,012.609

Protected Places (Consolidation)

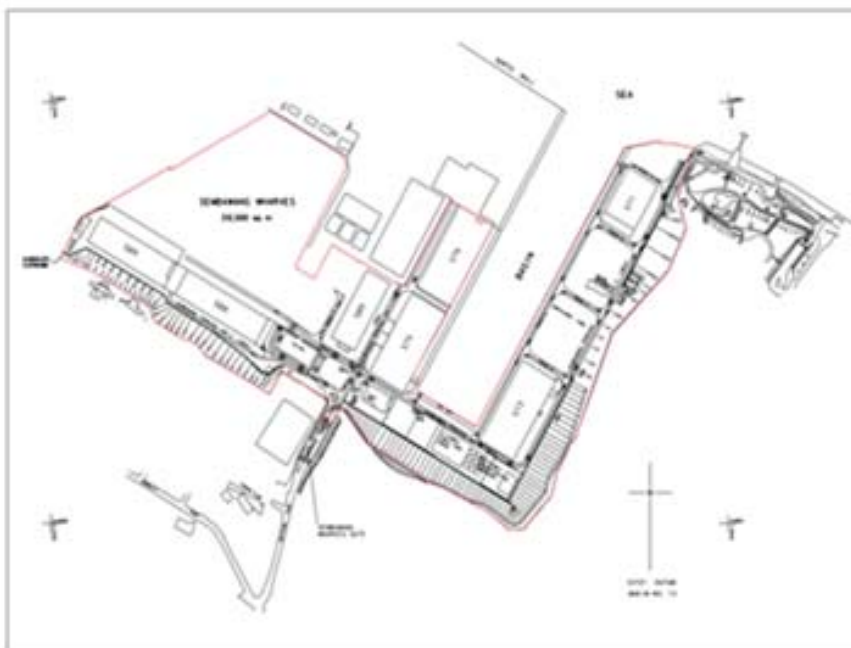
THE SCHEDULE — *continued*

<i>First column</i>		<i>Second column</i>
The Authority		Protected Place
	48,918.562	27,977.621
	48,958.734	27,896.637
	48,959.885	27,894.195
	48,960.848	27,891.672
	48,968.830	27,868.403
	49,031.306	27,761.988
	49,089.903	27,718.284
	49,093.244	27,712.477
	49,065.978	27,696.904
	49,078.106	27,676.425
	49,094.024	27,685.852
	49,101.529	27,688.623
	49,107.770	27,687.208
	49,125.633	27,656.414
	49,127.151	27,654.182
	49,130.745	27,650.018
	49,132.107	27,647.687
	49,132.977	27,645.131
	49,133.531	27,642.488
	49,144.421	27,623.487
	49,151.382	27,611.341
	49,146.732	27,605.203
	49,114.757	27,587.394
	49,116.313	27,585.187
	49,154.850	27,517.487
	49,180.186	27,473.456
	49,191.550	27,463.665

THE SCHEDULE — continued

<i>First column</i>	<i>Second column</i>	
The Authority	Protected Place	
	49,195.567	27,459.344
	49,200.601	27,451.763
	49,203.512	27,443.565
	49,207.536	27,431.836
	49,214.886	27,419.105
	49,236.372	27,382.089
	49,258.798	27,374.738
	49,299.275	27,306.430
	49,318.316	27,273.429
	49,332.545	27,235.404

to the point of commencement and are delineated in the Plan set out below.



THE SCHEDULE — *continued*

<i>First column</i>	<i>Second column</i>																																		
The Authority	Protected Place																																		
Senior Terminals Security Manager, PSA Corporation Limited	4. BRANI TERMINAL. All that area occupied by “BRANI TERMINAL” containing an area of approximately 861,550 square metres and bounded by Keppel Channel and Selat Sengkir. The boundary commences at the north- westernmost corner of the aforesaid “BRANI TERMINAL” which point’s co-ordinates are North 27,282.754 metres and East 26,954.037 metres of the Singapore Land Authority SVY 21 Datum and runs approximately as follows: <table border="0" style="margin-left: auto; margin-right: auto;"> <thead> <tr> <th style="text-align: left;"><i>Northing</i></th> <th style="text-align: left;"><i>Easting</i></th> </tr> </thead> <tbody> <tr><td>27,282.671</td><td>26,974.813</td></tr> <tr><td>27,143.905</td><td>26,971.892</td></tr> <tr><td>27,098.134</td><td>26,973.362</td></tr> <tr><td>27,054.962</td><td>26,979.408</td></tr> <tr><td>27,004.854</td><td>26,992.499</td></tr> <tr><td>26,965.480</td><td>27,007.922</td></tr> <tr><td>27,346.614</td><td>27,676.713</td></tr> <tr><td>27,348.670</td><td>27,684.214</td></tr> <tr><td>27,372.258</td><td>28,306.732</td></tr> <tr><td>27,367.908</td><td>28,318.637</td></tr> <tr><td>26,715.732</td><td>29,018.546</td></tr> <tr><td>26,711.540</td><td>29,018.687</td></tr> <tr><td>26,703.631</td><td>29,011.312</td></tr> <tr><td>26,568.339</td><td>28,738.715</td></tr> <tr><td>26,625.258</td><td>28,716.742</td></tr> <tr><td>26,640.101</td><td>28,711.007</td></tr> </tbody> </table>	<i>Northing</i>	<i>Easting</i>	27,282.671	26,974.813	27,143.905	26,971.892	27,098.134	26,973.362	27,054.962	26,979.408	27,004.854	26,992.499	26,965.480	27,007.922	27,346.614	27,676.713	27,348.670	27,684.214	27,372.258	28,306.732	27,367.908	28,318.637	26,715.732	29,018.546	26,711.540	29,018.687	26,703.631	29,011.312	26,568.339	28,738.715	26,625.258	28,716.742	26,640.101	28,711.007
<i>Northing</i>	<i>Easting</i>																																		
27,282.671	26,974.813																																		
27,143.905	26,971.892																																		
27,098.134	26,973.362																																		
27,054.962	26,979.408																																		
27,004.854	26,992.499																																		
26,965.480	27,007.922																																		
27,346.614	27,676.713																																		
27,348.670	27,684.214																																		
27,372.258	28,306.732																																		
27,367.908	28,318.637																																		
26,715.732	29,018.546																																		
26,711.540	29,018.687																																		
26,703.631	29,011.312																																		
26,568.339	28,738.715																																		
26,625.258	28,716.742																																		
26,640.101	28,711.007																																		

THE SCHEDULE — *continued*

<i>First column</i>		<i>Second column</i>
The Authority		Protected Place
	26,649.390	28,700.920
	26,510.506	28,410.419
	26,510.031	28,409.534
	26,684.759	28,222.272
	26,734.009	28,268.294
	26,843.412	28,150.950
	26,858.152	28,152.300
	26,879.854	28,152.007
	26,906.040	28,092.816
	26,918.169	28,079.219
	26,980.779	28,032.001
	27,001.006	28,014.544
	27,003.125	28,012.535
	27,005.077	28,010.363
	27,006.413	28,007.876
	27,007.614	28,005.101
	27,009.514	27,999.595
	27,010.299	27,996.778
	27,012.020	27,987.919
	27,012.625	27,984.956
	27,015.805	27,979.841
	27,017.559	27,977.380
	27,019.459	27,975.031
	27,021.509	27,972.952
	27,023.786	27,971.127
	27,028.521	27,967.577
	27,030.889	27,966.053

Protected Places (Consolidation)

THE SCHEDULE — *continued*

<i>First column</i>		<i>Second column</i>
The Authority		Protected Place
	27,035.134	27,963.379
	27,047.805	27,955.510
	27,060.791	27,947.970
	27,071.501	27,942.308
	27,087.484	27,933.997
	27,098.340	27,928.621
	27,114.201	27,920.078
	27,138.605	27,903.120
	27,159.632	27,882.831
	27,192.922	27,838.645
	27,194.952	27,727.938
	27,208.999	27,709.952
	27,195.263	27,699.415
	27,170.613	27,681.265
	27,172.023	27,679.296
	27,168.680	27,676.734
	27,167.810	27,673.945
	27,155.978	27,662.569
	27,161.009	27,652.201
	27,161.403	27,649.708
	27,147.469	27,642.903
	27,135.424	27,627.167
	27,118.144	27,632.846
	27,112.386	27,633.479
	27,109.451	27,631.953
	27,059.091	27,639.291
	26,985.829	27,648.927

THE SCHEDULE — *continued*

<i>First column</i>	<i>Second column</i>	
The Authority	Protected Place	
	26,947.180	27,654.087
	26,947.299	27,656.260
	26,927.086	27,658.074
	26,916.067	27,662.260
	26,920.548	27,673.584
	26,920.189	27,683.253
	26,914.099	27,685.491
	26,913.937	27,687.058
	26,913.491	27,688.569
	26,912.139	27,691.221
	26,910.730	27,693.843
	26,909.217	27,696.407
	26,906.532	27,700.359
	26,903.935	27,703.505
	26,899.559	27,707.726
	26,841.036	27,749.978
	26,786.606	27,744.569
	26,784.233	27,751.868
	26,782.890	27,751.460
	26,783.129	27,750.671
	26,778.261	27,749.137
	26,778.041	27,749.881
	26,764.045	27,745.374
	26,764.829	27,742.870
	26,763.810	27,740.898
	26,761.233	27,740.080
	26,766.284	27,724.136

THE SCHEDULE — *continued*

<i>First column</i>	<i>Second column</i>
The Authority	Protected Place
26,753.655	27,719.951
26,751.593	27,720.684
26,749.897	27,720.069
26,627.574	27,676.337
26,666.293	27,575.810
26,594.677	27,548.619
26,593.337	27,548.991
26,576.685	27,542.690
26,599.144	27,484.123
26,616.362	27,490.598
26,624.662	27,488.309
26,631.078	27,481.968
26,636.879	27,472.832
26,636.573	27,470.327
26,631.044	27,467.291
26,642.331	27,446.767
26,647.921	27,449.867
26,648.975	27,448.635
26,653.155	27,440.078
26,660.638	27,421.505
26,670.114	27,393.015
26,685.407	27,356.027
26,691.076	27,336.822
26,696.656	27,317.590
26,701.472	27,298.462
26,704.458	27,278.560
26,707.946	27,258.842

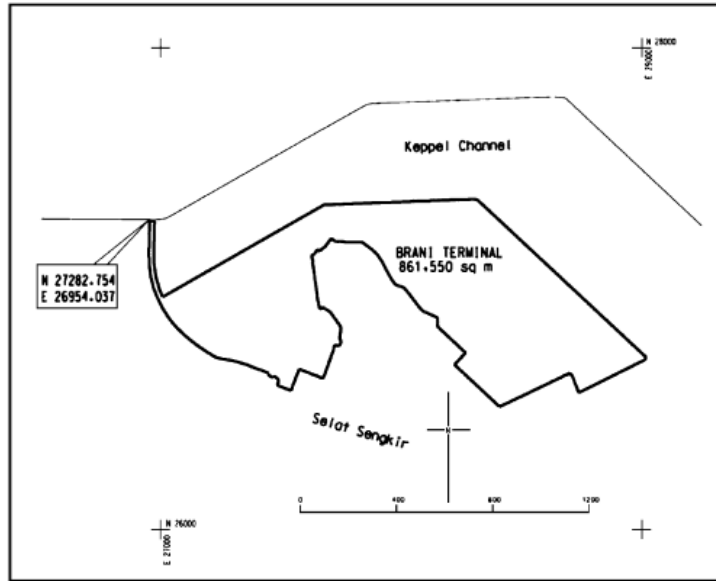
THE SCHEDULE — *continued*

<i>First column</i>		<i>Second column</i>
The Authority		Protected Place
	26,712.614	27,239.369
	26,714.657	27,229.759
	26,740.345	27,188.240
	26,760.431	27,158.096
	26,782.017	27,129.633
	26,808.932	27,097.493
	26,836.945	27,068.912
	26,858.297	27,049.555
	26,883.156	27,030.838
	26,923.059	27,005.782
	26,955.682	26,989.603
	26,998.826	26,971.958
	27,049.137	26,959.172
	27,097.206	26,952.664
	27,144.382	26,951.034
	27,282.754	26,954.037

to the point of commencement and are delineated in the Plan set out below.

THE SCHEDULE — *continued*

<i>First column</i>	<i>Second column</i>
The Authority	Protected Place



Senior Terminals Security
Manager, PSA Corporation
Limited

5. PSA Corporation Limited (KEPPEL
DISTRIPARK).

All that area occupied by “ PSA Corporation Limited (KEPPEL DISTRIPARK) — PROTECTED PLACE” containing an area of approximately 170, 769 square metres and bounded by Keppel Road, Kampong Bahru Road and Ayer Rajah Expressway.

The boundary commences at the northern-most corner of the aforesaid “ PSA Corporation Limited (KEPPEL DISTRIPARK) — PROTECTED PLACE” which point’s adopted co-ordinates are North 28,573.4 metres and East 27,517.9 metres. The point of commencement is 1,426.6 metres south and 2,482.1 metres west of the Survey Department origin (30,000 metres North, 30,000 metres East) of co-ordinates and runs approximately as under:

THE SCHEDULE — *continued*

<i>First column</i>		<i>Second column</i>
The Authority		Protected Place
	<i>Bearing.</i>	<i>Distance in metres.</i>
	133° 02'	15.0
	133° 36'	255.0
	133° 55'	50.0
	134° 01'	58.8
	180° 34'	5.5
	196° 38'	10.9
	220° 05'	18.9
	218° 40'	22.5
	227° 17'	73.6
	227° 16'	160.3
	227° 28'	78.6
	228° 33'	220.0
	228° 35'	136.7
	316° 11'	49.3
	331° 42'	23.3
	344° 43'	85.1
	356° 16'	63.5
	09° 35'	58.5
	348° 23'	23.8
	299° 04'	20.2
	339° 49'	7.3
	65° 31'	33.9
	62° 39'	27.7
	65° 53'	33.1
	55° 38'	11.1
	48° 36'	11.3

THE SCHEDULE — *continued*

<i>First column</i>	<i>Second column</i>
The Authority	Protected Place
43° 23'	27.8
49° 03'	54.5
49° 31'	17.7
78° 01'	10.9
104° 15'	16.7
123° 37'	13.0
137° 27'	103.4
47° 14'	81.7
317° 19'	108.3
337° 02'	9.6
354° 16'	11.9
22° 00'	9.9
48° 23'	61.0
43° 46'	12.1
37° 45'	11.1
47° 07'	7.8
21° 46'	32.1
357° 57'	31.8
353° 40'	24.3
335° 06'	28.4
343° 23'	35.3
343° 28'	8.2
01° 04'	12.9
25° 23'	13.5
41° 49'	19.9

to the point of commencement and are delineated in the Plan set out hereunder.

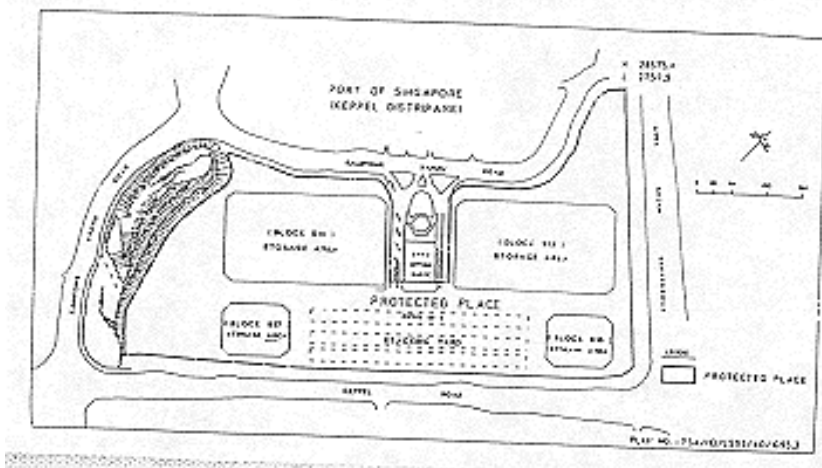
THE SCHEDULE — *continued*

First column

Second column

The Authority

Protected Place



Senior Terminals
Security Manager, PSA
Corporation Limited

6. [Deleted by S 295/2017 wef 09/06/2017]

Senior Terminal Security and
Safety Manager,
PSA Corporation Limited

7. [Deleted by s 620/2009, wef 15/12/2009]

[S 295/2017 wef 09/06/2017]

[S 486/2014 wef 24/07/2014]

[S 61/2012 wef 13/02/2012]

[S 506/93 wef 17/12/1993]

[S 40/1998 wef 23/01/1998]

[S 591/2009 wef 01/12/2009]

[S 552/2011 wef 29/09/2011]

First column

Second column

The Authority

Protected Place

- (10) S 580/91 [27.12.91] SHELL INSTALLATION AT PANDAN ROAD.
Marketing Director,
Shell Companies
(Pte.) Ltd.

THE SCHEDULE — *continued*

<i>First column</i>	<i>Second column</i>
The Authority	Protected Place

All those areas comprised in PRIVATE LOT A10269 and PRIVATE LOT A10270 (also known as part of Government survey Lot 4789 Mukim No. 5 Pandan) containing areas of about 10,438.8 square metres and 51,707 square metres, respectively, and bounded approximately as follows:

Private Lot A10269

Commencing at a point which is 31,087.5 metres North and 18,286.8 metres North and 18,286.8 metres East of the Survey Department origin of co-ordinates (N. 30,000m, E. 30,000m) the boundaries run along successive lines of bearings and distances as under:

<i>Bearing</i>	<i>Distance in metres</i>
15° 07' 30"	213.786
285° 08' 30"	48.020
195° 09' 00"	214.992

and bounded at the shoreline by rubble wall along successive lines of bearings and distances as under:

<i>Bearing</i>	<i>Distance in metres</i>
109° 53' 21"	16.587
119° 24' 03"	14.438
105° 52' 16"	8.508
57° 45' 44"	8.552
106° 06' 34"	3.285

to the point of commencement.

Private Lot A10270

Commencing at a point which is 31,119.9 metres North and 18,172.7 metres East of the Survey Department origin of co-ordinates (N. 30,000m E.

THE SCHEDULE — *continued*

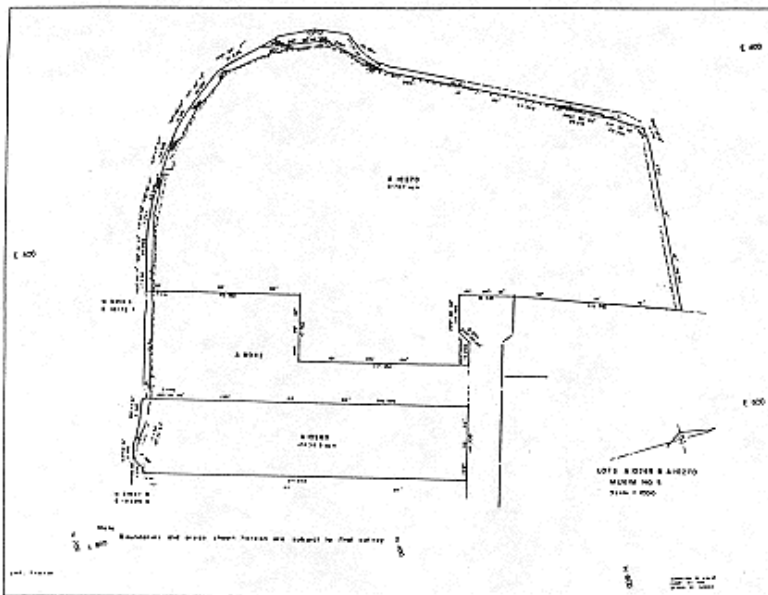
<i>First column</i>	<i>Second column</i>																								
The Authority	Protected Place																								
	30,000m) the boundaries run along successive lines of bearings and distances as under:																								
	<table border="0"> <thead> <tr> <th style="text-align: left;"><i>Bearing</i></th> <th style="text-align: left;"><i>Distance in metres</i></th> </tr> </thead> <tbody> <tr> <td>15° 09' 00"</td> <td>101.219</td> </tr> <tr> <td>105° 09' 00"</td> <td>43.5</td> </tr> <tr> <td>15° 09' 00"</td> <td>113.0</td> </tr> <tr> <td>285° 09' 00"</td> <td>15.208</td> </tr> <tr> <td>236° 09' 00"</td> <td>9.29</td> </tr> <tr> <td>285° 08' 40"</td> <td>24.384</td> </tr> <tr> <td>15° 07' 12"</td> <td>36.545</td> </tr> <tr> <td>18° 41' 18"</td> <td>111.696</td> </tr> <tr> <td>272° 57' 10"</td> <td>110.197</td> </tr> <tr> <td>262° 22' 10"</td> <td>11.87</td> </tr> </tbody> </table>	<i>Bearing</i>	<i>Distance in metres</i>	15° 09' 00"	101.219	105° 09' 00"	43.5	15° 09' 00"	113.0	285° 09' 00"	15.208	236° 09' 00"	9.29	285° 08' 40"	24.384	15° 07' 12"	36.545	18° 41' 18"	111.696	272° 57' 10"	110.197	262° 22' 10"	11.87		
<i>Bearing</i>	<i>Distance in metres</i>																								
15° 09' 00"	101.219																								
105° 09' 00"	43.5																								
15° 09' 00"	113.0																								
285° 09' 00"	15.208																								
236° 09' 00"	9.29																								
285° 08' 40"	24.384																								
15° 07' 12"	36.545																								
18° 41' 18"	111.696																								
272° 57' 10"	110.197																								
262° 22' 10"	11.87																								
	and bounded at the shoreline by rubble wall along successive lines of bearings and distances as under:																								
	<table border="0"> <tbody> <tr> <td>211° 33' 23"</td> <td>28.230</td> </tr> <tr> <td>204° 59' 52"</td> <td>29.610</td> </tr> <tr> <td>205° 13' 08"</td> <td>117.393</td> </tr> <tr> <td>220° 58' 58"</td> <td>45.554</td> </tr> <tr> <td>188° 08' 36"</td> <td>44.442</td> </tr> <tr> <td>163° 56' 27"</td> <td>31.635</td> </tr> <tr> <td>141° 06' 13"</td> <td>30.691</td> </tr> <tr> <td>134° 55' 48"</td> <td>16.281</td> </tr> <tr> <td>122° 47' 37"</td> <td>30.918</td> </tr> <tr> <td>120° 55' 01"</td> <td>22.416</td> </tr> <tr> <td>113° 05' 48"</td> <td>17.243</td> </tr> <tr> <td>106° 01' 23"</td> <td>20.860</td> </tr> </tbody> </table>	211° 33' 23"	28.230	204° 59' 52"	29.610	205° 13' 08"	117.393	220° 58' 58"	45.554	188° 08' 36"	44.442	163° 56' 27"	31.635	141° 06' 13"	30.691	134° 55' 48"	16.281	122° 47' 37"	30.918	120° 55' 01"	22.416	113° 05' 48"	17.243	106° 01' 23"	20.860
211° 33' 23"	28.230																								
204° 59' 52"	29.610																								
205° 13' 08"	117.393																								
220° 58' 58"	45.554																								
188° 08' 36"	44.442																								
163° 56' 27"	31.635																								
141° 06' 13"	30.691																								
134° 55' 48"	16.281																								
122° 47' 37"	30.918																								
120° 55' 01"	22.416																								
113° 05' 48"	17.243																								
106° 01' 23"	20.860																								

THE SCHEDULE — *continued*

<i>First column</i>	<i>Second column</i>
The Authority	Protected Place
102° 09' 13"	17.634
to the point of commencement.	

The boundaries of "SHELL INSTALLATION AT PANDAN ROAD" are more particularly delineated in the Plan set out hereunder.

SHELL INSTALLATION AT PANDAN ROAD



<i>First column</i>	<i>Second column</i>
The Authority	Protected Place
(11) S 31/92 [17.1.92] President and Chief Executive Officer of Senoko Energy Pte. Ltd.	PUBLIC UTILITIES BOARD GAS TURBINE GENERATING PLANT AT SENOKO POWER STATION.

THE SCHEDULE — *continued*

First column

Second column

All that area comprised in land Lot 1985, Mukim 13 (Sembawang) at Senoko Road, surrounded by a fencing containing an area of about 23,016.0 square metres and bounded approximately as follows:

Commencing at the south-western corner of the chain link fence which point is 49,699.619 metres North and 24,377.873 metres East of the Survey Department origin of co-ordinates 30,000 metres North, 30,000 metres East, the boundaries run along successive lines of fences of bearings and distances as under:

<i>Bearing</i>	<i>Distance in metres</i>
327° 19' 50"	151.766
327° 19' 50"	3.229
58° 17' 24"	52.057
50° 19' 39"	59.920
43° 52' 09"	23.434
56° 42' 18"	11.051
147° 20' 30"	15.263
147° 20' 30"	151.834
237° 21' 27"	56.499
237° 21' 27"	88.808

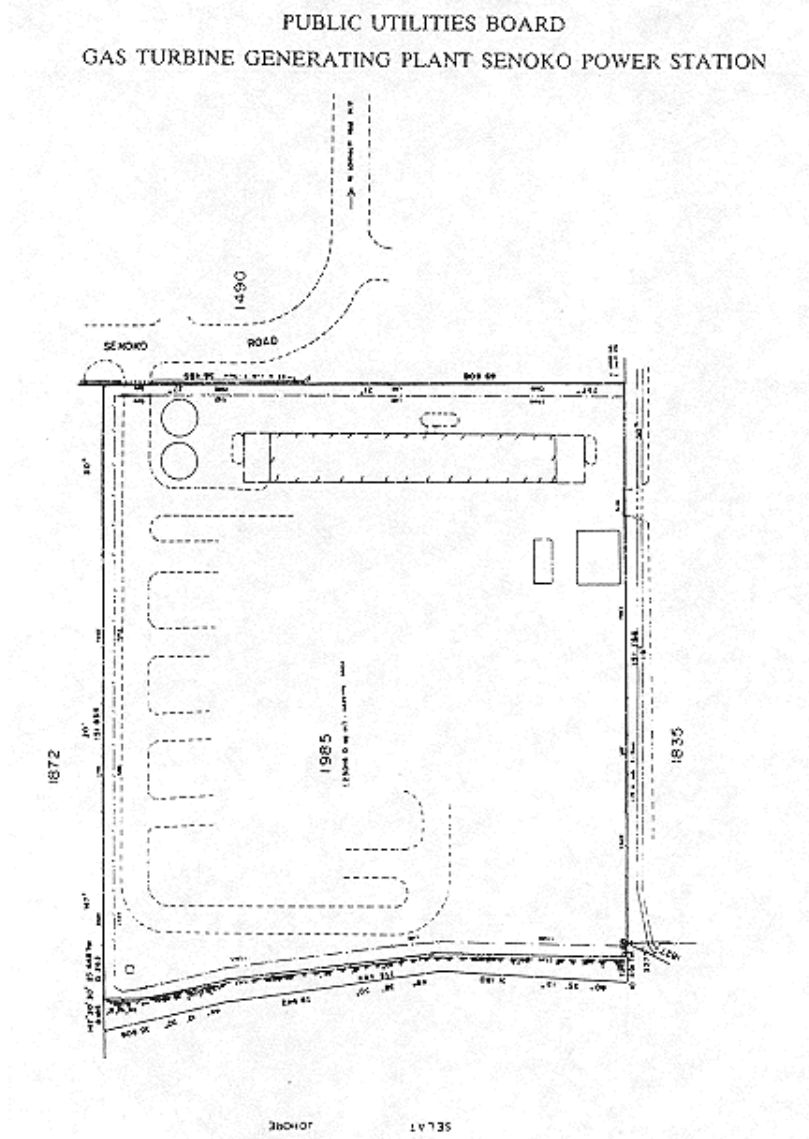
to the point of commencement.

The boundaries of the "PUBLIC UTILITIES BOARD GAS TURBINE GENERATING PLANT at Senoko Power Station" are more particularly delineated in the Plan set out hereunder.

THE SCHEDULE — continued

First column

Second column



THE SCHEDULE — continued

First column

Second column



Location Plan
 Approx Scale 1:10,000
 Geotex Surveyors Pte. Ltd.
 1 Goldhill Plaza
 #03-29, Podium Block
 Singapore 1130
 Tel: 2537422 (2 lines)
 Fax: 2531700

Job Title Survey and Preparation of Plans and Descriptions for Gazetting of Gas Turbine Plant Site at
 Senoko Mukim No. 13 Name: Sembawang
 Scale = 1:500
 Co-ordinates of Origin: N. 30,000 m E. 30,000 m
 Notes:
 (1) Horizontal datum adopted from Government Cadastral Plan
 (2) All grid values, dimensions and levels shown are in metres
 (3) Date of survey:— October 1991.
 (4) H.W.M. = High Water Mark

[S 490/2014 wef 25/07/2014]

First column

Second column

The Authority

Protected Place

(12) S 71/92 [28.2.92] MANDAI RANGE
 Assistant Chief of
 General Staff
 (Training).

THE SCHEDULE — *continued*

First column

Second column

All that area comprised in State Land being part of Lot 60-15 and part of Lot 60-20, MUKIM NO. 14 (MANDAI) occupied by “MANDAI RANGE” containing an area of about 84,248 square metres and bounded approximately as follows:

Commencing at the northern-most gate post of the aforesaid “MANDAI RANGE” which point is 42,771.1 metres North and 21,931.7 metres East of the Survey Department origin of co-ordinates (30,000 metres North and 30,000 metres East), the boundaries run along successive lines of bearings and distances as under:

<i>Bearing</i>	<i>Distance in metres</i>
5° 05'	2.2
91° 46'	7.2
19° 33'	2.0
97° 39'	2.7
90° 01'	149.1
84° 12'	16.9
89° 41'	29.8
104° 29'	10.3
130° 05'	6.0
157° 11'	6.2
178° 53'	43.2
180° 44'	83.8
173° 48'	47.2
164° 46'	12.0
182° 31'	8.9
190° 14'	8.9
210° 41'	8.7
222° 11'	3.0

THE SCHEDULE — *continued*

<i>First column</i>	<i>Second column</i>
225° 52'	5.9
240° 46'	9.1
248° 03'	3.0
250° 59'	3.2
260° 25'	8.8
268° 54'	28.1
268° 57'	30.0
176° 12'	34.8
184° 15'	17.8
186° 02'	47.8
178° 07'	14.9
168° 27'	8.9
153° 39'	9.1
157° 11'	2.9
163° 42'	3.0
166° 30'	6.0
184° 52'	24.1
191° 43'	2.9
196° 06'	3.0
200° 14'	3.1
204° 53'	2.9
213° 24'	5.9
222° 57'	6.0
232° 02'	6.1
240° 18'	6.0
248° 18'	6.0
261° 19'	9.1
269° 55'	98.9

THE SCHEDULE — *continued*

First column

Second column

273° 33'	9.0
285° 47'	6.0
291° 19'	6.0
300° 37'	3.1
307° 36'	5.9
322° 39'	9.0
338° 25'	8.9
357° 14'	6.0
19° 13'	20.5
14° 12'	23.8
79° 52'	4.4
0° 49'	206.3
63° 33'	5.1
62° 34'	4.6 (across a drain)
334° 11'	8.9
346° 27'	5.9
355° 02'	3.0
0° 47'	6.0
4° 40'	47.1
20° 11'	32.9
12° 41'	31.5
284° 53'	11.4
294° 05'	6.1
5° 05'	4.1
5° 05'	6.4 (along a gate)

to the point of commencement.

The boundaries of “MANDAI RANGE” are more particularly delineated and edged pink on Survey

THE SCHEDULE — *continued*

First column

Second column

Plan No. LE/91/59 GAZETTE filed in the office of the Director, Lands and Estates Organisation, Ministry of Defence, Singapore.

First column

Second column

The Authority

Protected Place

- (13) S 80/92 [6.3.92] TUAS NAVAL BASE
Officer
Commanding, Tuas
Naval Base.

All that area comprised in part of State Land Lots 46-4, 46-5, 46-7, 46-8, 54-1, 54-3, 838, State Land Lot 46-6, part of reclaimed land Lot 987 and part of the sea, Mukim No. 7 (TUAS), containing an area of about 774,092 square metres and bounded approximately as follows:

Commencing at the northern-most corner of the boundary of the aforesaid “TUAS NAVAL BASE” which point is 31,423.2 metres North and 8,496.8 metres East of the Survey Department origin of co-ordinates (30,000 metres North and 30,000 metres East), the boundaries run along successive lines of bearings and distances as under:

<i>Bearing</i>	<i>Distance in metres</i>
133° 23'	15.3
125° 55'	116.7
141° 19'	267.1
155° 29'	39.6
156° 27'	128.5
150° 53'	23.8
139° 44'	24.0
128° 35'	24.0
117° 28'	21.9

THE SCHEDULE — *continued*

<i>First column</i>	<i>Second column</i>
The Authority	Protected Place
110° 44'	29.4
108° 25'	27.3
106° 06'	27.3
103° 46'	27.3
101° 26'	27.2
99° 06'	27.4
92° 27'	23.3
88° 08'	23.2
83° 48'	23.2
79° 30'	23.2
75° 12'	23.2
70° 53'	23.2
66° 34'	23.2
62° 16'	23.2
57° 41'	18.5
52° 42'	18.5
47° 51'	12.4
140° 28'	347.2
230° 28'	5.0
140° 28'	134.0
230° 28'	331.4
230° 28'	19.9
239° 31'	537.1 (across the sea)
190° 07'	177.0 (across the sea)
319° 41'	726.7 (across the sea)
354° 47'	225.4 (across the sea)
50° 26'	301.0 (across the sea)

THE SCHEDULE — *continued*

<i>First column</i>	<i>Second column</i>
The Authority	Protected Place
50° 26'	60.9
50° 26'	228.3
336° 25'	40.2
335° 27'	36.8
321° 18'	261.6
305° 54'	114.6
313° 25'	17.3
43° 23'	21.6

to the point of commencement.

The boundaries of “TUAS NAVAL BASE” are more particularly delineated and edged pink on Survey Print No. LE/91/60 GAZETTE filed in the office of the Director, Lands and Estates Organisation, Ministry of Defence, Singapore.

<i>First column</i>	<i>Second column</i>
The Authority	Protected Place
(14) S 105/92 [20.3.92] Singapore Technologies Logistics Pte. Ltd.	TUAS JETTY

All that area comprised in part of Lot 1502, Mukim No. 7 (TUAS) part of foreshore and part of seabed to the south-west of the mainland occupied by “TUAS JETTY” containing an area of about 1.60 hectares and bounded approximately as follows:

Commencing at the northern-most corner of the perimeter fence of the aforesaid “TUAS JETTY” which point’s co-ordinates are 30,416.2 metres North and 4,204.5 metres East of the Survey Department origin of co-ordinates (30,000 metres North and 30,000 metres East), the boundaries run

THE SCHEDULE — *continued*

<i>First column</i>	<i>Second column</i>
The Authority	Protected Place
	along successive lines of bearings and distances as under:
<i>Bearing</i>	<i>Distance in metres</i>
149° 23'	52.0 (along chain link fence and gates)
239° 20'	52.1 (along chain link fence)
328° 22'	10.8 (along chain link fence)
229° 24'	48.0 (about one metre offset from slipway)
319° 04'	9.0 (along slipway)
49° 28'	50.1 (about one metre offset from slipway)
239° 23'	854.8 (about one metre offset from jetty)
202° 39'	13.5 (about one metre offset from jetty)
157° 29'	50.6 (about one metre offset from jetty)
247° 31'	18.0 (about one metre offset from jetty)
337° 29'	132.0 (about 2 metres offset from jetty)
67° 39'	18.0 (about one metre offset from jetty)
157° 28'	50.6 (about one metre offset from jetty)
111° 58'	13.2 (about one metre offset from jetty)
59° 23'	852.5 (about one metre offset from jetty)
330° 39'	20.0 (along chain link fence)

THE SCHEDULE — *continued*

<i>First column</i>	<i>Second column</i>
The Authority	Protected Place
59° 24'	52.1 (along chain link fence) to the point of commencement.

The boundaries of “TUAS JETTY” are more particularly delineated and edged pink on Survey Plan No. LE/92/1/GAZETTE filed in the office of the Director, Lands and Estates Organisation, Ministry of Defence, Singapore.

<i>First column</i>	<i>Second column</i>
The Authority	Protected Place
(15) S 144/92 [27.3.92] Commander, HQ 2 PDF Command.	NEE SOON WAREHOUSE

All that area comprised in part of State Land Lots 15, 17 and part of State Reserve (Old Sembawang Road), Mukim No. 19 (NORTH SELETAR) occupied by “NEE SOON WAREHOUSE” containing an area of about 7,406 square metres and bounded approximately as follows:

Commencing at the southern-most corner of the perimeter fence of the aforesaid “NEE SOON WAREHOUSE” which point is 43,516.7 metres North and 26,683.2 metres East of the Survey Department origin of co-ordinates (30,000 metres North and 30,000 metres East), the boundaries run along successive lines of fence of bearings and distances as under:

<i>Bearing</i>	<i>Distance in metres</i>
276° 49'	25.0
296° 13'	39.9
330° 17'	4.2
26° 05'	36.8
19° 18'	23.8

THE SCHEDULE — *continued*

<i>First column</i>	<i>Second column</i>
The Authority	Protected Place
21° 16'	31.4
44° 14'	18.1
116° 06'	60.4
207° 03'	6.0
196° 16'	38.1
205° 59'	32.0
207° 26'	1.4 (across gate)
206° 11'	12.2 (across gate)
206° 14'	13.9

to the point of commencement.

The boundaries of “NEE SOON WAREHOUSE” are more particularly delineated and edged pink on Survey Plan No. LE/92/3/GAZETTE filed in the office of the Director, Lands and Estates Organisation, Ministry of Defence, Singapore.

<i>First column</i>	<i>Second column</i>
The Authority	Protected Place
(16) S 146/92 [27.3.92] S 212/92 The Director, Electricity Department, Public Utilities Board.	PUBLIC UTILITIES BOARD 230/66/22/6.6 KV SUBSTATION AT KAMPONG JAVA ROAD. All that area comprised in part of Lot 801 TS No. 28 occupied by “PUB 230/66/22/6.6 KV SUBSTATION” containing an area of about 11,005 square metres and bounded approximately as follows:

Commencing at a point on the northern-most corner of the perimeter fence of the aforesaid “PUB SUBSTATION”, which point is 32,866.4 metres North and 29,286.6 metres East of the Survey Department origin of co-ordinates (30,000 metres North, 30,000 metres East), the boundaries

THE SCHEDULE — *continued*

First column

Second column

The Authority

Protected Place

run along successive lines of fence of bearings and distances as under:

<i>Bearing</i>	<i>Distance in metres</i>
201° 42'	36.9
199° 35'	35.5
197° 45'	35.7
204° 53'	36.2
197° 08'	10.1
296° 43'	44.3
207° 45'	0.5
297° 03'	31.1
297° 11'	6.0 (along a gate)
297° 03'	14.1
351° 21'	35.3
77° 25'	7.9
69° 54'	26.8
55° 01'	36.0
30° 19'	21.3
314° 02'	9.8
350° 13'	0.2
82° 55'	24.7

to a point where it meets a wall, thence along successive lines which follow a series of walls, gates and fence of bearings and distances as under:

<i>Bearing</i>	<i>Distance in metres</i>
82° 45'	4.7 (along a wall)
83° 06'	9.0 (along a gate)
83° 11'	4.7 (along a wall)

THE SCHEDULE — *continued*

<i>First column</i>	<i>Second column</i>
The Authority	Protected Place
83° 15'	15.4 (along a fence)
82° 05'	4.7 (along a wall)
82° 55'	8.3 (along a gate)
83° 03'	4.7 (along a wall)
84° 16'	3.8 (along a fence)

to the point of commencement.

The boundaries of the “PUB 230/66/22/6.6 KV SUBSTATION” are more particularly delineated and edged pink on Survey Plan No. 30017 filed in the office of the Chief Surveyor, Singapore.

<i>First column</i>	<i>Second column</i>
The Authority	Protected Place
(17) S 351/92 The President and Chief Executive Officer, Toppan Leefung Pte. Ltd.	TOPPAN LEEFUNG PTE. LTD. UBI PLANT, 97 UBI AVENUE 4, SINGAPORE 408754

All that area comprised in part of Lot 3134 Pt, Mukim 23, Paya Lebar, occupied by Toppan Leefung Pte. Ltd. and Toppan Security Printing Pte. Ltd. containing an area of approximately 5,501.7 square metres and bounded approximately as follows:

Commencing at a point on the southern corner of the perimeter fence of the aforesaid Toppan Leefung Pte. Ltd. and Toppan Security Printing Pte. Ltd., which is approximately 35,149.244 metres North and 34,761.004 metres East of the Survey Department origin of co-ordinates, the boundary runs along a fence on a bearing of 66° 44' 44" for a distance of 43.784 metres (partly across the main entrance gate), thence along

THE SCHEDULE — *continued*

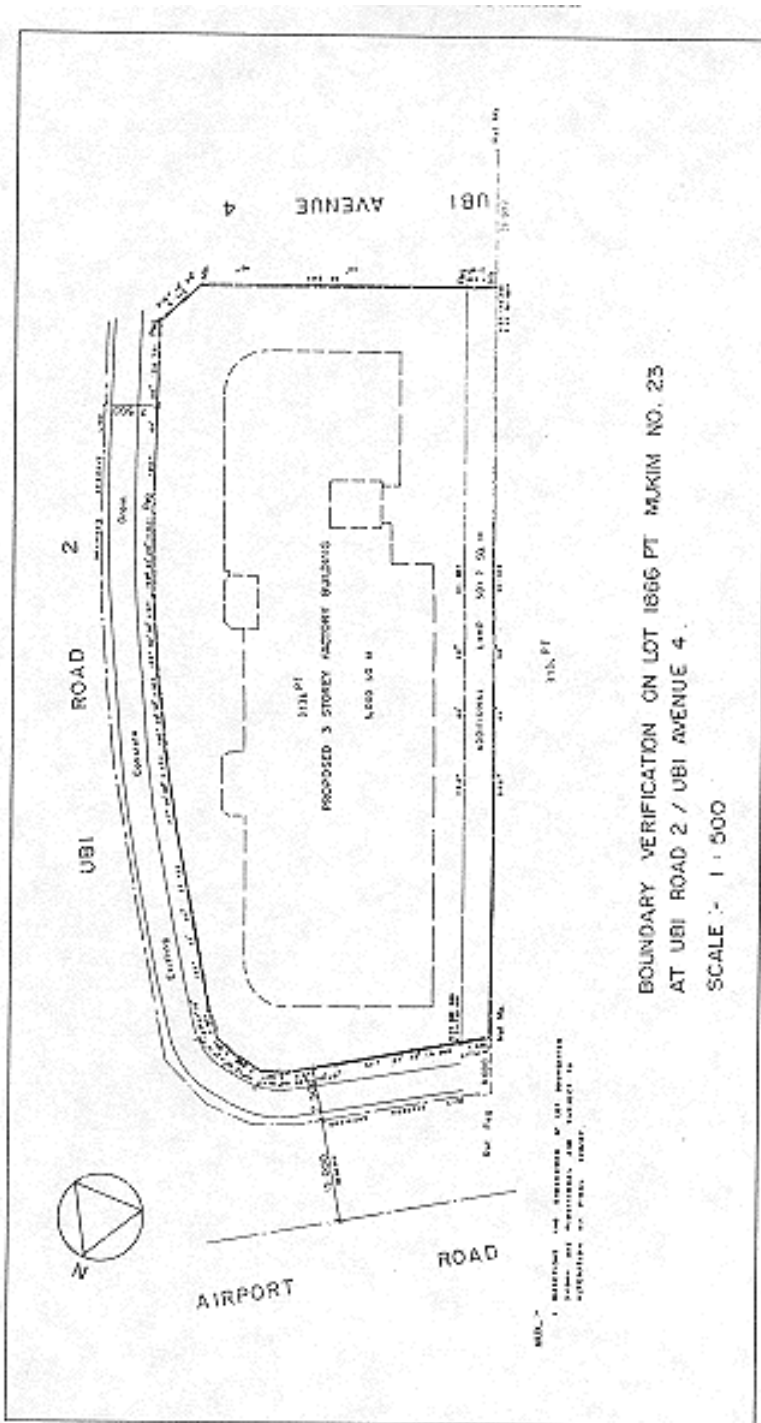
successive lines of fences of bearings and distances as under:

<i>Bearing</i>	<i>Distance in metres</i>
25° 12' 30"	8.712
338° 05' 30"	28.701
336° 34' 20"	11.921
333° 32' 00"	11.921
330° 30' 20"	11.923
327° 28' 00"	11.922
325° 56' 20"	26.724
317° 37' 10"	3.946
292° 34' 50"	3.991
270° 13' 50"	3.988
246° 19' 40"	3.987
236° 43' 20"	6.841
237° 07' 40"	19.366
237° 51' 14"	4.555
156° 44' 40"	111.125

to the point of commencement.

The boundaries of Toppan Leefung Pte. Ltd. and Toppan Security Printing Pte. Ltd. are more particularly delineated in the Plan set out hereunder.

THE SCHEDULE — continued



THE SCHEDULE — *continued**[S 637/2015 wef 04/11/2015]*

<i>First column</i>	<i>Second column</i>
The Authority	Protected Place
(18) S 505/92 [11.12.92] Assistant Chief of General Staff (Training).	PULAU TEKONG M203 RANGE

All that area comprised in parts of State Land Lots 482, 49, 503, 533, 545, 298, part of foreshore, part of seabed, part of Sungei Seminei and part of State Reserve, Mukim No. 33 (PULAU TEKONG) occupied by “PULAU TEKONG M203 RANGE” containing an area of about 168,078 square metres and bounded approximately as follows:

Commencing at a point on the northern-most corner of the boundary of the aforesaid “PULAU TEKONG M203 RANGE” which point is 42,884.0 metres North and 50,435.6 metres East of the Survey Department origin of co-ordinates (30,000 metres North and 30,000 metres East), the boundaries run along successive lines of bearings and distances as under:

<i>Bearing</i>	<i>Distance in metres</i>
109° 15'	170.0 (partly across Sungei Seminei)
176° 53'	17.7 (to meet the northern edge of cattle fence)
176° 53'	39.3 (along cattle fence)
175° 21'	50.4 (along cattle fence)
167° 22'	22.9 (along cattle fence)
162° 29'	27.7 (along cattle fence)
158° 34'	25.1 (along cattle fence)
143° 50'	32.0 (along cattle fence)

THE SCHEDULE — *continued*

<i>First column</i>		<i>Second column</i>
The Authority		Protected Place
	183° 58'	12.7 (along cattle fence)
	200° 13'	14.9 (along cattle fence)
	189° 49'	85.2 (along cattle fence)
	189° 49'	277.5 (partly across the sea)
	295° 43'	410.0 (across the sea)
	26° 02'	520.0 (partly across the sea)

to the point of commencement.

The boundaries of “PULAU TEKONG M203 RANGE” are more particularly delineated and edged pink on Survey Plan No. LE/92/16 GAZETTE filed in the office of the Director, Lands and Estates Organisation, Ministry of Defence, Singapore.

[S 506/93 wef 17/12/1993]

[S 458/96 wef 01/01/1995]

LEGISLATIVE HISTORY
PROTECTED PLACES (CONSOLIDATION) ORDER
(CHAPTER 256, O 4)

This Legislative History is provided for the convenience of users of the Protected Places (Consolidation) Order. It is not part of this Order.

1. G. N. No. S 319/1991 — Protected Places (Consolidation) Order 1991

Date of commencement : Date not available

2. G. N. No. S 366/1993

Date of commencement : Date not available

3. G. N. No. S 506/1993

Date of commencement : Date not available

4. 1993 Revised Edition — Protected Places (Consolidation) Order

Date of operation : 1 April 1993

5. G. N. No. S 458/1996 — Protected Places (Consolidation) (Amendment) Order 1996

Date of commencement : 1 January 1995

6. G. N. No. S 40/1998 — Protected Places (Consolidation) (Amendment) Order 1998

Date of commencement : 23 January 1998

7. G. N. No. S 418/2000 — Protected Places (Consolidation) (Amendment) Order 2000

Date of commencement : 20 September 2000

8. G. N. No. S 75/2005 — Protected Places (Consolidation) (Amendment) Order 2005

Date of commencement : 15 February 2005

9. G. N. No. S 344/2005 — Protected Places (Consolidation) (Amendment No. 2) Order 2005

Date of commencement : 3 June 2005

10. G. N. No. S 298/2006 — Protected Places (Consolidation) (Amendment) Order 2006

Date of commencement : 8 June 2006

- 11. G. N. No. S 124/2008 — Protected Places (No. 2) Order 2008**
Date of commencement : 14 March 2008
- 12. G. N. No. S 591/2009 — Protected Places (Consolidation) (Amendment) Order 2009**
Date of commencement : 1 December 2009
- 13. G. N. No. S 620/2009 — Protected Places (Consolidation) (Amendment No. 2) Order 2009**
Date of commencement : 15 December 2009
- 14. G. N. No. S 611/2010 — Protected Places (Consolidation) (Amendment) Order 2010**
Date of commencement : 26 October 2010
- 15. G. N. No. S 552/2011 — Protected Places (Consolidation) (Amendment) Order 2011**
Date of commencement : 29 September 2011
- 16. G.N. No. S 61/2012 — Protected Places (Consolidation) (Amendment) Order 2012**
Date of commencement : 13 February 2012
- 17. G.N. No. S 19/2013 — Protected Places (Consolidation) (Amendment) Order 2013**
Date of commencement : 16 January 2013
- 18. G.N. No. S 486/2014 — Protected Places (Consolidation) (Amendment No. 4) Order 2014**
Date of commencement : 24 July 2014
- 19. G.N. No. S 490/2014 — Protected Places (Miscellaneous Amendments) Order 2014**
Date of commencement : 25 July 2014
- 20. G.N. No. S 637/2015 — Protected Places (Miscellaneous Amendments) (No. 2) Order 2015**
Date of commencement : 4 November 2015
- 21. G.N. No. S 230/2016 — Protected Places (No. 3) Order 2016**
Date of commencement : 24 May 2016
- 22. G.N. No. S 295/2017 — Protected Places (No. 3) Order 2017**
Date of commencement : 9 June 2017

**23. G.N. No. S 399/2017 — Protected Places (Miscellaneous Amendments)
Order 2017**

Date of commencement : 19 July 2017