

ROAD TRAFFIC ACT  
(CHAPTER 276, SECTION 112)

HIGHWAY CODE

ARRANGEMENT OF RULES

PART I

ALL ROAD USERS

Rule

- 1.
2. *[Deleted]*
- 3.
- 4.
- 5.
- 6.

PART II

ROAD USERS ON FOOT

7. *Walking along the road*
- 8.
9. *[Deleted]*
10. *Crossing the road*
- 10A.
- 10B.
- 11.
- 12.
- 13.
- 14.
15. *Pedestrian crossings*
- 16.
- 17.
- 18.
- 19.
- 20.
- 20A.
21. *Crossing the Road at Junction*
22. *Signal Controlled Crossings*
- 23.

Rule

- 24.
- 25.
- 26. *Police-controlled Crossings*
- 27. *Pedestrian overpasses and underpasses*
- 28. *Getting on or off Public Vehicles*

PART III

PEDAL CYCLISTS AND POWER-ASSISTED BICYCLE RIDERS

- 29. *When Riding*
- 30.
- 31.
- 32.
- 33.
- 34.
- 35.
- 35A.
- 35B.
- 36.
- 37.
- 38. *Roadworthiness*
- 39. *General*
- 40.
- 41.
- 42. *[Deleted]*
- 43.
- 44.

PART IIIA

USE OF CROSSINGS, AND USE OF PERSONAL  
MOBILITY DEVICES, ETC.

- 44A. *Use of crossings by pedal cyclists, riders of power-assisted bicycles or personal mobility devices, etc.*
- 44B. *Crossing speed*
- 44C. *Use of personal mobility devices, mobility scooters and motorised wheelchairs*

PART IV  
ROAD USERS ON WHEEL

## Rule

- 45.
- 46. *Moving off*
- 47. *Driving along*
- 48.
- 49.
- 49A.
- 50. *Keep left*
- 51.
- 52. *White Lines*
- 53.
- 54.
- 55.
- 56.
- 57.
- 58.
- 59.
- 60. *Overtaking*
- 61. *Overtaking on the Right*
- 62.
- 63.
- 64.
- 65.

*U-Turn*

- 66.
- 67. *Following Distances*
- 68.
- 69. *Speed and Stopping Distances*
- 69A. *Road Junctions*
- 70.
- 71.
- 72.
- 73.
- 74.
- 75.
- 76.
- 77. *Safety of Pedestrians, Pedal Cyclists, etc.*

Rule

- 78.
- 79.
- 80.
- 81.
- 82.
- 83.
- 84.
- 85.
- 86.

*Reversing*

*Mirror and signals*

- 87.
- 88.
- 89.
- 90.

*Stopping and parking*

- 91.
- 92.
- 93.
- 94.
- 95.
- 96.
- 97.
- 98.
- 99.
- 100.

*Lights*

*HEAVY MOTOR VEHICLES*

- 101.
- 102.

*SMOKY AND NOISY EXHAUSTS*

- 103.
- 104.

*ROADWORTHINESS*

- 105.

*GENERAL*

Rule

- 106.
- 107.
- 108.
- 109.
- 110.

## PART V

## ROAD USERS AND ANIMALS

- 111.
- 112.
- 113.

*SIGNS AND SIGNALS*

- 114.

*SIGNALS GIVEN BY POLICE OFFICER*

- 115.

*HAND SIGNALS*

- 116.

*COMMON CAUSES OF TRAFFIC ACCIDENTS*

- 117.

---

[17th January 1975]

## PART I

## ALL ROAD USERS

1. The Highway Code is a code of conduct and not a digest of traffic laws. It lays stress on the responsibilities of road users towards each other.

2. [*Deleted by S 3173/2019 wef 01/12/2019*]

3. Road traffic requires the co-operation of all road users for its smooth and efficient operation. This Highway Code tells you how you can co-operate with other road users in reducing the number of accidents.

4. Always be considerate, courteous, vigilant and sober. Remember that alcohol reduces the alertness of the driver and often the sense of caution. Other road users too must always be sober, particularly cyclists and pedestrians. Many fatal accidents are caused by negligence, lack of consideration for others and the influence of alcohol.

5. Study and understand the traffic signals and traffic signs set out in this Code and the Road Traffic (Traffic Signs) Rules (R 33), and use them or obey them, as the case may be.

*[S 3173/2019 wef 01/12/2019]*

6. Read this Highway Code, study it and understand it, and then pass on your knowledge to others, especially to children.

## PART II

### ROAD USERS ON FOOT

#### *Walking along the road*

7. If there is no footpath and you have to walk along the road, then walk as close as possible to the edge of the road. Avoid using any mobile communication device while walking along the road.

*[S 3173/2019 wef 01/12/2019]*

8. If you walk on an unlit or dimly lit road at night, always wear or carry something light-coloured or reflective. This will help to make you more visible to motorists.

*[S 3173/2019 wef 01/12/2019]*

9. *[Deleted by S 3173/2019 wef 01/12/2019]*

#### *Crossing the road*

10. Where a pedestrian crossing is available, always use the pedestrian crossing to cross the road. Where a pedestrian crossing is not available, always cross the road by the shortest possible route,

which is from one side to the other. Do not risk death or injury by trying to cross at other places in heavy traffic. You must also obey the traffic signs and traffic lights.

[S 3173/2019 wef 01/12/2019]

**10A.** While crossing any road, make sure you have a clear view of the road both ways. Take extra care if your view is limited by stationary vehicles or other obstruction. Before crossing, practise the kerb drill for crossing the road mentioned in paragraph 13.

[S 3173/2019 wef 01/12/2019]

**10B.** Avoid using any mobile communication device while crossing any road.

[S 3173/2019 wef 01/12/2019]

**11.** Before you risk crossing the road in front of an approaching motor vehicle remember that although you could stop almost immediately, a motor vehicle would have to travel a considerable distance before it stops. Be aware that the stopping distance of a moving vehicle varies with the speed of the vehicle, the distance travelled by the vehicle when a driver reacts, and the braking distance of the vehicle (refer to paragraph 69).

[S 3173/2019 wef 01/12/2019]

**12.** In rainy weather do not rush across the street with your head down, or with an umbrella obscuring your view.

**13.** Teach children the kerb drill for crossing the road, which is “look right, look left, then look right again, and if the road is clear, quick march”.

[S 3173/2019 wef 01/12/2019]

**14.** Do not follow other pedestrians blindly without yourself checking that it is safe to cross.

### ***Pedestrian crossings***

**15.** Do not step onto a pedestrian crossing until approaching vehicles have come to a complete stop. When crossing at a pedestrian crossing, be alert for vehicles being driven inconsiderately and

without care or attention. If possible, make eye contact with drivers to ensure that they are aware of your presence.

[S 3173/2019 wef 01/12/2019]

**16.** Take extra care at night. Remember that unless a pedestrian crossing is floodlit, it may not show up very clearly. On rainy nights the markings may be almost invisible to an approaching driver.

**17.** When you have stepped off the kerb on to a pedestrian crossing you have the right of way but allow approaching vehicles ample time to give way, especially if the road is wet.

**18.** Do not stand on the pavement at a pedestrian crossing if you do not intend to cross the road.

**19.** Once you are on the pedestrian crossing, look right and left as you cross, because a driver may not have seen you.

**20.** Where a pedestrian crossing has a central refuge, each half is a separate crossing and you should treat it as such.

**20A.** If there is a choice between using a bicycle crossing or a pedestrian crossing to cross a road, use the pedestrian crossing.

[S 1217/2018 wef 05/05/2018]

### ***Crossing the Road at Junction***

**21.** When crossing the road at junctions, look out for vehicles negotiating the corner.

### ***Signal Controlled Crossings***

**22.** At a light controlled crossing, wait on the footway until the traffic, in front of which you intend to cross, has come to a standstill.

**23.** If traffic lights have a “green man” signal, do not cross until the signal appears. If possible, make eye contact with drivers to ensure that they are aware of your presence.

[S 3173/2019 wef 01/12/2019]

**24.** Pedestrian signals portray ‘a standing red man’ and a ‘walking green man’.

(1) When the ‘walking green man’ is lighted up, you may cross.



(2) When the ‘walking green man’ starts flickering, it means that the light will change soon, so —

(a) if you are already crossing, move briskly across; or

(b) if you are about to start crossing, do not cross.

(3) When the ‘stationary red man’ is lighted up, do not cross.

**25.** When push-buttons are provided on the traffic signal pole, push the button if you want the ‘green man’ to appear and wait until the ‘green man’ appears before crossing.

### ***Police-controlled Crossings***

**26.** Do not cross the road against a signal to stop given by a police officer controlling traffic.

### ***Pedestrian overpasses and underpasses***

**27.** Where there is a pedestrian overpass or an underpass, you must make use of it. Pedestrian overpasses and underpasses are built for your safety and must always be used when crossing the road.

*[S 3173/2019 wef 01/12/2019]*

### ***Getting on or off Public Vehicles***

**28.** Do not get on or off a bus while it is moving, or when it is not at a bus stop. Do not step out suddenly from behind a stationary or slowly moving bus. If you want to get on a bus at a bus stop, give a clear signal for it to stop. Do not step onto the road until it has stopped.

## PART III

### PEDAL CYCLISTS AND POWER-ASSISTED BICYCLE RIDERS

*[S 1217/2018 wef 05/05/2018]*

***When Riding***

**29.** Always ride on the left-hand edge of a roadway. Allow other traffic to overtake you safely. Keep a straight course and avoid sudden swerves.

*[S 1217/2018 wef 05/05/2018]*

**30.** If a road has a bicycle lane, cycle on the bicycle lane and no other part of the road, except when the bicycle lane is blocked or obstructed, or making a U-turn or right turn.

*[S 1217/2018 wef 05/05/2018]*

**31.** Ride in a single file when possible.

*[S 1217/2018 wef 05/05/2018]*

**32.** Do not swerve in and out of vehicles in traffic. When traffic is slow, keep your place and do not attempt to get in front of the other vehicles by weaving in and out of the narrow spaces between them.

*[S 1217/2018 wef 05/05/2018]*

**33.** Keep a safe distance from the rear of a motor vehicle (especially when riding behind a moving vehicle) so as to avoid collision if the vehicle in front stops suddenly.

*[S 1217/2018 wef 05/05/2018]*

**34.** When riding, maintain awareness of traffic.

*[S 1217/2018 wef 05/05/2018]*

**35.** Slow down and look out for other road users when approaching road accesses, bends, junctions, and crossings, or when passing a parked motor vehicle. When passing a parked motor vehicle, beware of the vehicle door opening. Allow a margin of safety when passing.

*[S 1217/2018 wef 05/05/2018]*

**35A.** Do not squeeze between a bus at a bus stop and the bus stop kerb.

*[S 1217/2018 wef 05/05/2018]*

**35B.** Avoid staying close to the rear of a turning motor vehicle or squeezing between the turning vehicle and the road kerb.

*[S 1217/2018 wef 05/05/2018]*

**36.** If a hill is so steep that the bicycle you are riding on wobbles before you reach the top, get off and walk with the bicycle. Keep your cycling speed under control on downhill roads. If you travel too fast, you will not be able to stop in time in an emergency.

*[S 1217/2018 wef 05/05/2018]*

**37.** Do not hold on to the back or side of motor vehicles.

### ***Roadworthiness***

**38.** Check that your bicycle's front and back lights, brakes, tyres and chain are in safe working condition before setting off. Check the height of the bicycle's handlebars and seat. If you are unable to touch the ground with your foot on either side of the bicycle, your seat is too high and you will not have full control of the bicycle when coming to a sudden stop in an emergency.

*[S 1217/2018 wef 05/05/2018]*

### ***General***

**39.** You must switch on your bicycle lights at night or when visibility is low. Your bicycle's front light must show a white light, and the rear of your bicycle must display a red light or be affixed with a red reflector. The front white light and the rear red light or rear red reflector (as the case may be) must be visible from a reasonable distance. If you ride at night, wear light-coloured clothing. This will help drivers of other vehicles and pedestrians to see you clearly.

*[S 3173/2019 wef 01/12/2019]*

**40.** Keep both hands on the handlebars of your bicycle. When signalling your intention to change direction or make a turn, do so ahead of time and return your hand to the handlebars, before you actually start to turn.

*[S 1217/2018 wef 05/05/2018]*

**41.** Do not carry anything in your arm that may interfere with the proper control of your bicycle.

*[S 1217/2018 wef 05/05/2018]*

**42.** *[Deleted by S 1217/2018 wef 05/05/2018]*

**43.** Always use the safest route, and keep out of heavy traffic as much as possible.

**44.** Always obey the law and observe all traffic rules. Never ignore road signs.

### PART IIIA

#### USE OF CROSSINGS, AND USE OF PERSONAL MOBILITY DEVICES, ETC.

*[S 3173/2019 wef 01/12/2019]*

##### ***Use of crossings by pedal cyclists, riders of power-assisted bicycles or personal mobility devices, etc.***

**44A.** Pedal cyclists, riders of power-assisted bicycles or personal mobility devices, and drivers of mobility scooters or motorised wheelchairs must use a bicycle crossing, if there is a choice between using a bicycle crossing or a pedestrian crossing.

*[S 3173/2019 wef 01/12/2019]*

##### ***Crossing speed***

**44B.** Pedal cyclists, riders of power-assisted bicycles or personal mobility devices, and drivers of mobility scooters or motorised wheelchairs should only cross a pedestrian crossing, bicycle crossing, zebra crossing or informal crossing, or the entrance or exit to a car park, at walking speed.

##### ***Use of personal mobility devices, mobility scooters and motorised wheelchairs***

**44C.** Do not ride a personal mobility device, or drive a mobility scooter or a motorised wheelchair, on any road.

*[S 3173/2019 wef 01/12/2019]*

### PART IV

#### ROAD USERS ON WHEEL

*[S 3173/2019 wef 01/12/2019]*

**45.** Before you drive any motor vehicle on the road for which a driving licence is required, you must have a valid driving licence authorising you to drive that motor vehicle, and be covered by valid insurance in respect of that motor vehicle.

[S 3173/2019 wef 01/12/2019]

### ***Moving off***

**46.** Before you move off, look around, even though you may have looked in your mirror, to see that no one is about to overtake you. Give the proper signal before moving off, and only move off when you can do so safely and without inconvenience to other road users. Give way to passing and overtaking vehicles.

### ***Driving along***

**47.** Do not exceed legal speed limits. Always obey the “Reduce Speed Now” sign.

**48.** Adjust your speed to the conditions of the road on which you are travelling. Such adjustment will enable you to stop in any emergency without skidding or losing control.

**49.** A good driver automatically reduces his speed when —

- (a) entering a built-up area;
- (b) approaching a school or a bus with children alighting or boarding;
- (c) travelling on narrow, winding roads;
- (d) approaching children who are playing; or
- (e) approaching a bend, brow of a hill, or any other obstruction that limits his view.

**49A.** Do not drive, stop or park your motor vehicle on a bicycle lane at all times.

[S 1217/2018 wef 05/05/2018]

### ***Keep left***

**50.** When driving along, do not hog the middle of the road. Keep well to the left and as near as practicable to the edge of the road (including on dual carriageways) unless —

- (a) you intend to overtake;
- (b) you intend to turn right; or
- (c) there is a bicycle lane, in which case, you should keep to the left-most vehicle lane.

[S 1217/2018 wef 05/05/2018]

**51.** You must not cross the centre line at bends, near the crest of a rise or anywhere else where you cannot clearly see the road ahead.

### ***White Lines***

**52.** Where continuous double white lines are painted on a road to separate traffic flowing in opposite directions, you may not overtake at the double white lines unless you keep entirely to the left of such lines.

**53.** Never cross double white lines. Making a U-turn or a right turn is not allowed on a road where such lines are painted.

**54.** Never cross a single continuous or broken white line along the middle of the road unless you can see that the road ahead is clear.

### ***Lane Discipline***



**55.** You must obey the directions indicated by arrows or words marked in the lanes. See illustration above. You must not change lanes so suddenly as to inconvenience or endanger other traffic. Signal early before changing lanes and plan your route well.

[S 3173/2019 wef 01/12/2019]

**56.** In traffic hold-ups, do not “jump the queue”.

**57.** Well before you reach a junction, make sure that you are in the appropriate lane.

**58.** On a two-lane carriageway, keep to the left-hand lane except when overtaking.

**59.** On a three-lane carriageway, you may keep to the central lane when the left-hand lane is occupied by slower moving vehicles. The outer (right-hand) lane is for overtaking only; do not stay in it longer than necessary after overtaking vehicles in the centre lane.

### ***Overtaking***

**60.** Never overtake unless you can do so without danger to yourself or others. Be specially careful at night, and in heavy rain and mist, as it is more difficult to judge speed and distance at such times.

### ***Overtaking on the Right***

**61.** This rule does not apply —

- (a) when the driver in front has signalled his intention to turn right, in which case you can overtake him on his left;
- (b) when you are filtering to the left before a junction; or
- (c) when there is slow-moving congested traffic and the vehicles on your right are moving more slowly than your vehicle.

**62.** Return to the appropriate lane on the road as soon as practicable after overtaking, but do not cut in sharply in front of the vehicle you have just overtaken.

**63.** Do not overtake when you are at, or when you are approaching —

- (a) a pedestrian crossing;

- (b) a road junction;
- (c) a corner or bend;
- (d) the brow of a hill; or
- (e) a double white line.

**64.** Do not overtake —

- (a) where the road narrows;
- (b) if it would force another vehicle to swerve or reduce speed;  
or
- (c) if in doubt.

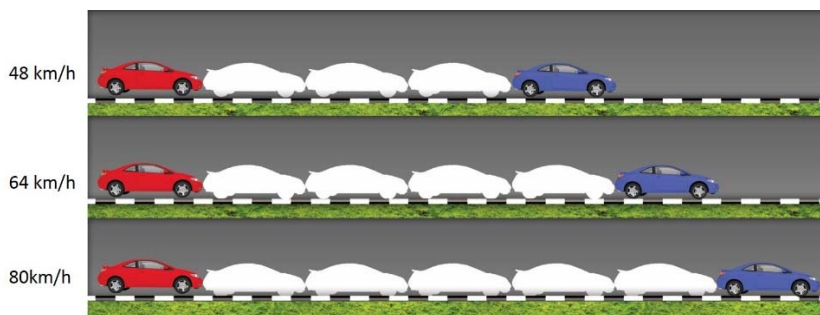
**65.** When being overtaken, never increase speed to prevent another driver from passing.

### U-Turn

**66.** Do not make a U-turn at any road intersection, junction or any opening in a road divider unless permitted to do so by a traffic sign.

### *Following Distances*

**67.** To be able to adjust your speed so that you can stop within the space between you and the vehicle in front, you must allow at least one car length for every 16 km/h of your speed.



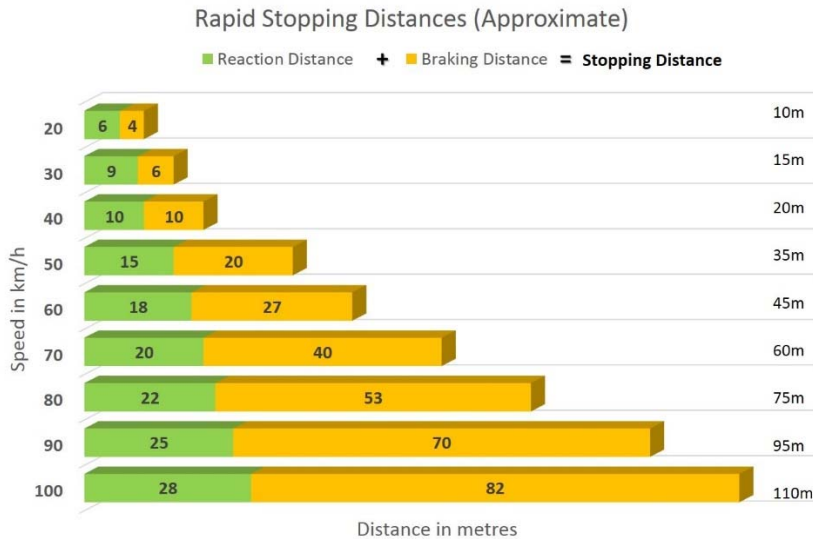
[S 3173/2019 wef 01/12/2019]

**68.** Watch for the stop light on the car in front and the traffic ahead of the car in front.



### ***Speed and Stopping Distances***

**69.** Be aware that the stopping distance of a moving vehicle consists of the distance travelled by the vehicle when a driver reacts, and the braking distance of the vehicle.

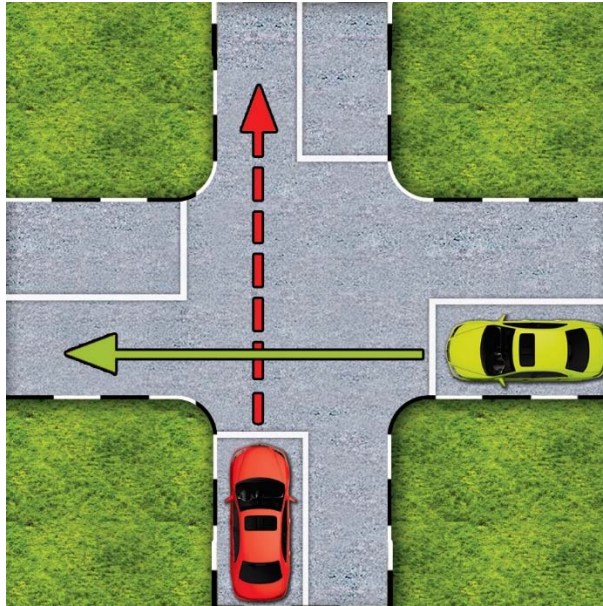


[S 3173/2019 wef 01/12/2019]

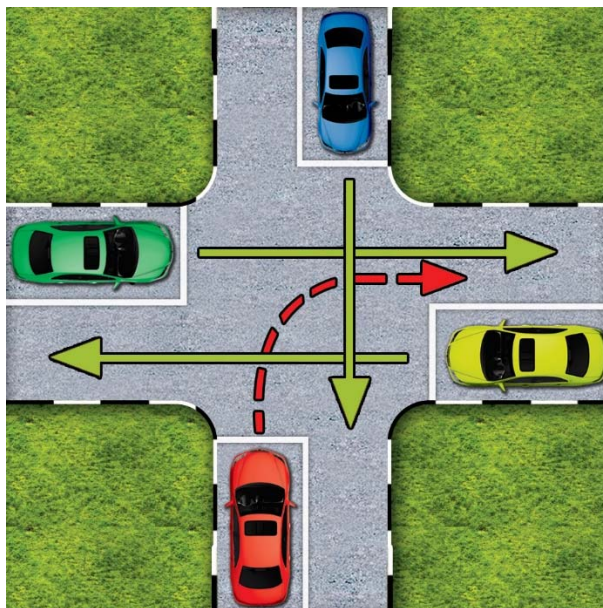
### ***Road Junctions***

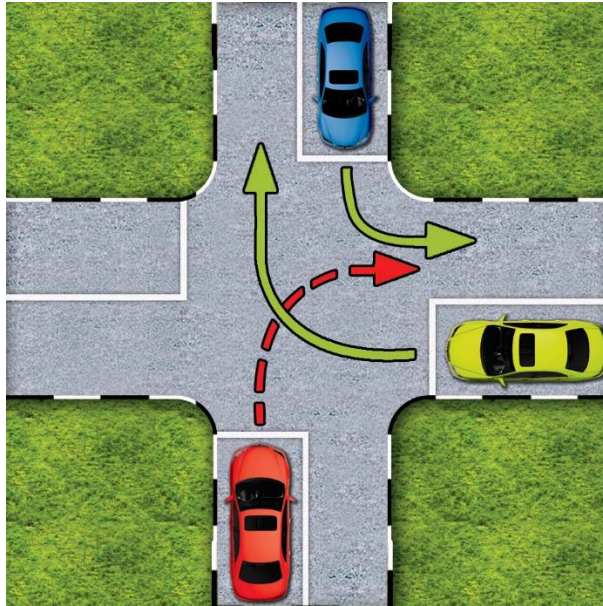
**69A.** When approaching a junction, you must observe the following:

- (a) If you are going straight across the junction, you must give way to traffic going straight from the right.

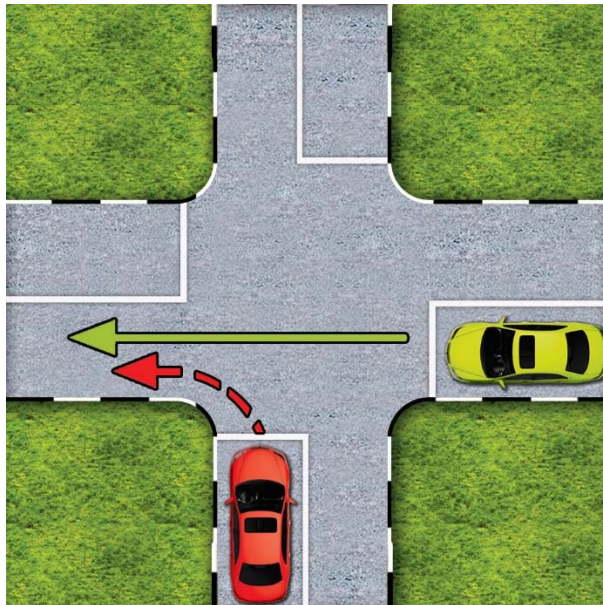


- (b) If you are turning right, you must give way to traffic going from all directions. You must also give way to traffic turning right from the right, and to traffic turning left from the opposite direction.





- (c) If you are turning left, you must give way to traffic going straight from the right.



[S 3173/2019 wef 01/12/2019]

**70.** When approaching a junction with a major road, slow down gradually and give way to traffic on the major road. Where there is a “STOP” sign, stop at the major road.

**71.** Where there are no traffic lights, give way signs or stop signs, give way to all traffic on your right, including cyclists. See illustrations in paragraph 69A.

*[S 3173/2019 wef 01/12/2019]*

**72.** At a junction look right, then left, then right again. Do not move off until you are sure that it is safe to do so.

*[S 3173/2019 wef 01/12/2019]*

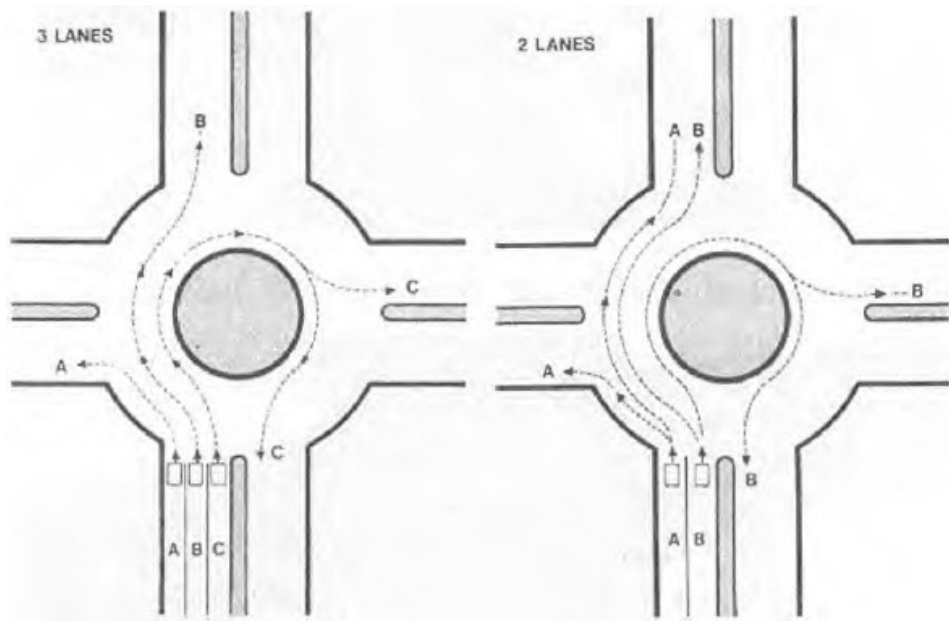
**73.** Well before you turn right at a junction, take full account of the position and movement of traffic behind you. Signal your intention early, and drive cautiously towards the centre of the junction. Give way to approaching vehicles and crossing pedestrians adjacent to you. Wait until it is safe to cross or wait for the green arrow signal to appear. Turn swiftly to the correct lane, keeping a look-out for pedestrians crossing at the junction.

*[S 3173/2019 wef 01/12/2019]*

**74.** If you intend to turn left, keep to the left, signal in good time, and do not swing out to the right either before or after making the turn.

**75.** When turning left or right, drivers must always give way to vehicles going straight on and to pedestrians.

**76.** Slow down when approaching a roundabout, and give way to traffic on your right.



Remember — you must always give way to traffic approaching from your right. The general rule is that —

- traffic from Lane A in this illustration goes to 'A';
- traffic from Lane B goes to 'B'; and
- traffic from Lane C goes to 'C'.

If, however, you find your correct lane overcrowded, you may use another lane to reach your destination: Provided that —

- (a) you give clear signals showing your intention in good time;
- (b) you obey the right-hand rule;
- (c) you do not inconvenience other drivers;
- (d) you use your mirror intelligently to see that you do not obstruct the path of vehicles behind you.

***Safety of Pedestrians, Pedal Cyclists, etc.***

**77.** Pedestrians, pedal cyclists, riders of power-assisted bicycles or personal mobility devices, and drivers of mobility scooters or motorised wheelchairs have the right of way on pedestrian crossings.

*[S 244/2019 wef 01/02/2019]*

**78.** When approaching a pedestrian crossing slow down and do not overtake other vehicles.

**79.** When approaching a pedestrian crossing always —

(a) be ready to slow down or stop so as to give way to pedestrians, pedal cyclists, riders of power-assisted bicycles or personal mobility devices, and drivers of mobility scooters or motorised wheelchairs;

*[S 244/2019 wef 01/02/2019]*

(b) signal to other drivers your intention to slow down or stop; and

(c) allow yourself more time to stop when road is wet.

**80.** At a pedestrian crossing controlled by light signals or by a policeman, give way to pedestrians, pedal cyclists, riders of power-assisted bicycles or personal mobility devices, and drivers of mobility scooters or motorised wheelchairs who are crossing when the signal to stop is given.

*[S 244/2019 wef 01/02/2019]*

**81.** When a school patrol sign is extended at a pedestrian crossing, vehicles travelling in both directions must stop and remain stationary until the whole crossing is clear and the sign has been removed.

**82.** Watch for the pedestrian, pedal cyclist, rider of a power-assisted bicycle or personal mobility device, or driver of a mobility scooter or motorised wheelchair who comes out suddenly from behind stationary vehicles and other obstructions. Be very careful near schools and bus stops. When turning at a road junction, give way to pedestrians, pedal cyclists, riders of power-assisted bicycles or personal mobility devices, and drivers of mobility scooters or motorised wheelchairs who are crossing.

*[S 244/2019 wef 01/02/2019]*

**83.** When driving (especially on any road without a path beside it) —

- (a) watch out for pedestrians, pedal cyclists, riders of power-assisted bicycles or personal mobility devices, and drivers of mobility scooters or motorised wheelchairs, regardless of whether they are allowed on the road;
- (b) keep a safe distance when driving behind them; and
- (c) allow a margin of safety when passing them.

*[S 3173/2019 wef 01/12/2019]*

### ***Reversing***

**84.** Before you reverse make sure that there are no children or other pedestrians or obstructions in the blind area behind you.

**85.** Do not reverse from a side road onto a main road.

**86.** If your view to the rear is restricted, get help when reversing.

### Mirror and signals

**87.** Keep a watch on the traffic behind you by checking your mirror every 5 to 10 seconds while driving along.

*[S 3173/2019 wef 01/12/2019]*

**88.** Well before you change direction, overtake or stop —

- (a) look into your mirror (if you are a motor-cyclist glance to the side or behind);
- (b) make sure that it is safe; and
- (c) give a clear signal to indicate that you intend to do so.

**89.** Everytime you intend to turn, stop or slow down, give the correct signal. Signal in good time and maintain the signal long enough to enable others to anticipate your movement. Make sure that your direction indicator gives the signal intended, and that it is cancelled immediately after use.

**90.** Hand signals are given not only for the benefit of following traffic but also for oncoming traffic, traffic waiting in side streets and pedestrians. Most cars today have signalling devices but in broad

daylight hand signalling is more readily seen and understood. Do not allow passengers to give hand signals. See that children do not hold their arms or dangle toys out of the windows of the car, for their arms or toys may be mistaken for hand signals. It is also dangerous for children to do this.

### Stopping and parking

**91.** Do not park (which means to bring a motor vehicle to a stationary position and cause it to wait for any purpose) or let your vehicle stand —

- (a) at a bend, the brow of a hill or a bridge;
  - (b) on a footway or cycle track;
  - (c) near traffic lights or pedestrian crossings;
  - (d) on a main road or on a road carrying fast-moving traffic;
  - (e) opposite or nearly opposite another stationary vehicle across the road, opposite a refuge or other obstruction (e.g. road repairs);
  - (f) abreast of another vehicle;
  - (g) opposite a continuous white line, double white lines or any other traffic sign prohibiting parking;
  - (h) near any road side on which a single yellow line (from 7.00 a.m. to 7.00 p.m.) or double yellow lines are painted;
  - (i) within —
    - (i) 6 metres (20 feet) of an intersection or a junction of any road or street;
    - (ii) 9 metres (30 feet) on either side of a bus stop; or
    - (iii) 3 metres (10 feet) on either side of a fire hydrant;
- [S 3173/2019 wef 01/12/2019]*
- (ia) where it will obscure a traffic sign or obstruct any entrance;
- [S 3173/2019 wef 01/12/2019]*
- (j) facing oncoming traffic;



- (k) on any slip road or filter lane;
- (l) on a fly-over, underpass or the ramps leading to any fly-over or underpass;
- (m) on the grass verge of a road;
- (n) in any bus lane; or
- (o) at any designated taxi stop.

**92.** Before opening the door of a vehicle make sure that it will not endanger or inconvenience anybody on the road or footpath. Get out on the side nearest to the kerb whenever it is possible.

**93.** When you have to stop, pull in as close as possible to the edge of the road. This applies especially to drivers of buses when setting down or picking up passengers.

**94.** Do remember that you are not allowed to leave any broken-down or wrecked vehicle on any public road. If your vehicle breaks down on the road, push it into a break down bay if there is one, otherwise push it as close to the side of the road as possible and arrange for it to be towed away immediately so as not to cause obstruction to the free flow of traffic.

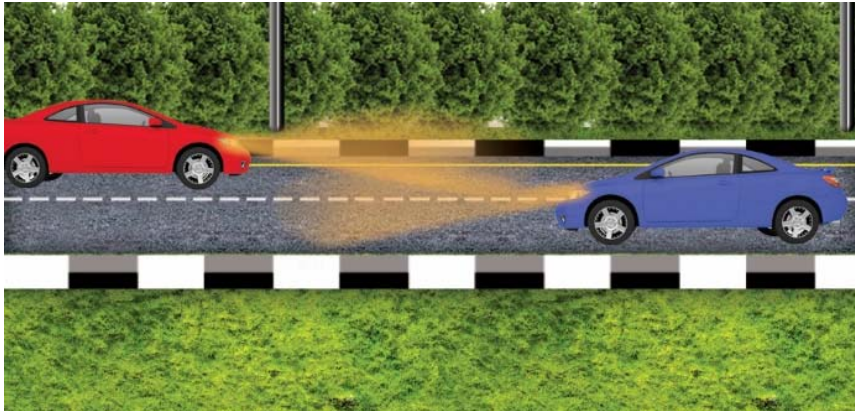
### ***Lights***

**95.** You must drive with your headlights on at night (between 7.00 p.m. and 7.00 a.m. the following day).

*[S 3173/2019 wef 01/12/2019]*

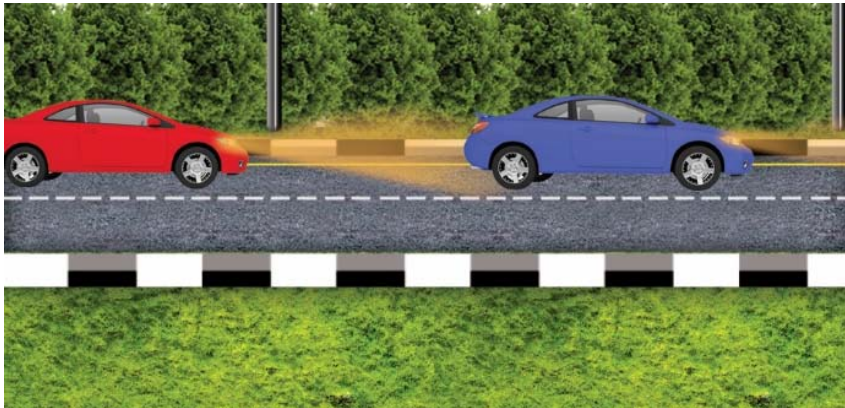
**96.** Use dipped headlights at night in built-up areas where the street lighting is poor, or during rainy weather.

**97.** On unlit or dimly lit roads always use your headlights. When meeting other vehicles and cyclists, dip your headlights. If you are dazzled by the lights of another vehicle, slow down and stop if necessary.



[S 3173/2019 wef 01/12/2019]

**98.** When driving behind another vehicle, dip your headlights.



[S 3173/2019 wef 01/12/2019]

**99.** In daytime whenever visibility is poor or if it is raining switch on your lights. This will enable other road users to see you.

**100.** It is advisable when parking in unlit or poorly lit roads at night to leave your side or parking lights on.

### HEAVY MOTOR VEHICLES

**101.** Drivers of large vehicles must always —

- (a) keep such vehicles to the road or vehicle speed limit (whichever is lower); and

- (b) travel on the extreme left lane of the road (except for bus lanes during their operating hours) to allow faster vehicles to overtake on the right.

[S 3173/2019 wef 01/12/2019]

**102.** Any goods vehicle which has an open deck for the carriage of goods and is to be used to carry any person on the floor of the vehicle must comply with the applicable requirements in the Road Traffic (Motor Vehicles, Construction and Use) Rules (R 9). Persons carried in a goods vehicle with an open deck for the carriage of goods must be seated in accordance with the Road Traffic (Carriage of Persons in Goods Vehicles) Rules 2010 (G.N. No. S 663/2010).

[S 3173/2019 wef 01/12/2019]

### SMOKY AND NOISY EXHAUSTS

**103.** All vehicles must be properly maintained to minimise the emission of smoke.

[S 3173/2019 wef 01/12/2019]

**104.** All vehicles must be properly maintained to eliminate excessive noise.

[S 3173/2019 wef 01/12/2019]

### ROADWORTHINESS

**105.** For safety, you must maintain your vehicle in a roadworthy condition. This includes the following:

(a) *Tyres*

All vehicles are to be fitted with tyres of a suitable size and design. Keep your tyres up to the correct pressure. Tyres that have worn out must be replaced. Worn out or bald tyres cause skids when you brake hard in an emergency, whether the road is wet or dry.

(b) *Brakes*

Check your brakes regularly to ensure that they are in a good condition. Any leakage of brake fluid must be attended to without delay.

(c) *Steering*

The steering assembly of your car must be regularly checked, properly adjusted and kept in good condition.

(d) *Lights*

Check all your lights, including parking lights and signalling lights, to make sure that they are working properly.

[S 3173/2019 wef 01/12/2019]

### GENERAL

**106.** Sounding your horn when driving is unnecessary, except to warn other road users to avoid an imminent accident or during an emergency. Horns used must not produce an unduly harsh, shrill, loud or multi-tone sound.

[S 3173/2019 wef 01/12/2019]

**107.** You must give way upon hearing the emergency siren of any motor vehicle used for ambulance, fire brigade, military, police, customs or civil defence purposes (called in this paragraph an emergency vehicle) or seeing the flashing lights of such a vehicle. In addition, you must observe the following:

- (a) Stay calm and check the direction of the oncoming emergency vehicle.
- (b) Give way by signalling early and filter towards the left if it is safe to do so. Do not wait until the last minute to do so.
- (c) If you are unable to filter to the left safely, slow down to let the emergency vehicle overtake you.
- (d) Do not speed up to block an overtaking emergency vehicle or try to overtake or tailgate an emergency vehicle as this can put yourself and other road users in danger.
- (e) Do not break the law to give way to an emergency vehicle (e.g. by driving through a red light).

[S 3173/2019 wef 01/12/2019]

**108.** Drivers must not be distracted while driving. Do not use any mobile communication device or turn your head to talk with your passengers while driving. Children and pets must not be allowed to obstruct or distract the driver.

*[S 3173/2019 wef 01/12/2019]*

**109.** Reduce your speed when driving past animals, and give them plenty of room. Stop if necessary or if signalled to do so.

*[S 3173/2019 wef 01/12/2019]*

**110.** Always slow down when approaching any traffic lights and be prepared to stop when the traffic light turns amber or red.

*[S 3173/2019 wef 01/12/2019]*

## PART V

### ROAD USERS AND ANIMALS

*[S 3173/2019 wef 01/12/2019]*

**111.** Do not let your dog stray. When you take it for a walk, or when it is in your car, keep it under close control.

*[S 3173/2019 wef 01/12/2019]*

**112.** Make sure that the road is clear before you allow, or take, animals on to the road.

*[S 3173/2019 wef 01/12/2019]*

**113.** When leading an animal on the road, always place yourself between it and the traffic, and keep the animal to the edge of the road.

*[S 3173/2019 wef 01/12/2019]*

### SIGNS AND SIGNALS

**114.** When turning, give way to through traffic and to pedestrians who are crossing.



**RED**  
Means "STOP".

**ALL RED**  
Some junctions have an ALL RED period for safety or for pedestrians to cross. This means all the approaches are simultaneously showing the red signals. Do not start to move until the green light appears in your favour.

---



**AMBER**  
Means "STOP" unless you are so close to the stop-line when the light turns AMBER that you cannot stop safely.

**FLASHING AMBER**  
Means the traffic light signal is out of order. Proceed with caution. Give way to traffic on the right.

---



**GREEN**  
Means "GO".  
Look to the right and left to ensure it is safe before you proceed.

---



**GREEN ARROW**  
Means "GO" but only in the direction indicated after ensuring oncoming traffic is clear.

**FLICKERING GREEN ARROW**  
Means signal is about to be cancelled. Do not proceed if you have not crossed the stop-line.



**GREEN "B"**

Means "GO" for all buses only. This is allowed for them to move out of a bus-bay or a side lane and proceed ahead of other vehicles.



**ADVANCED WARNING LIGHTS**

A signal with two "flashing amber" lights, "lights signal ahead" sign and a blue "Prepare to stop" sign. It is erected before bends where visibility of the traffic light ahead is unsatisfactory. Vehicles should slow down and be prepared to stop.



**GREEN ARROW**

Means "GO" in the direction indicated. (Turn right)



**AMBER ARROW**

Means "READY TO STOP" behind the stop-line in the direction indicated.



**RED ARROW**

Means "STOP" behind the stop-line in the direction indicated. (Do not turn right even when there is no traffic from the opposite direction)

[S 3173/2019 wef 01/12/2019]

**SIGNALS GIVEN BY POLICE OFFICER**

**115.** Signals given by police officers directing traffic take precedence over those conveyed by road signs, traffic light signals, road markings and traffic regulations.



(a) Vehicles approaching Police Officer from all directions to stop.



(b)(i) Vehicles approaching Police Officer from front and behind to stop.  
(ii) Vehicles approaching from his/her right and left may proceed.



(c)(i) Vehicles approaching Police Officer from his/her right, front and behind to stop.  
(ii) Vehicles approaching from his/her left may proceed.



(d)(i) Vehicles approaching Police Officer from front and behind to stop.  
(ii) Vehicles approaching from his/her right may proceed.  
(iii) Vehicles approaching from his/her left be ready to stop. Signal is about to change.

(e)(i) Vehicles approaching Police Officer from his left, front and behind to stop.  
(ii) Vehicles approaching from his/her right be ready to stop. Signal is about to change.

(f)(i) Right-turning vehicles in front of Police Officer may proceed.  
(ii) Vehicles approaching from all other directions to stop.

[S 3173/2019 wef 01/12/2019]

## HAND SIGNALS

**116.** Before doing any of the following, give a clear signal and in good time to let other road users know of your intention:

- (a) turning or moving towards the right or left;
- (b) stopping or slowing down;
- (c) pulling out from a parking place;
- (d) pulling out to pass.





[S 3173/2019 wef 01/12/2019]

## COMMON CAUSES OF TRAFFIC ACCIDENTS

**117.** The following are common causes of traffic accidents:

- (a) failing to keep a proper lookout;
- (b) failing to keep proper control of one's vehicle;
- (c) failing to give way to traffic with the right of way;
- (d) changing lane without due care;
- (e) disobeying traffic light signals.

[S 3173/2019 wef 01/12/2019]

LEGISLATIVE HISTORY  
HIGHWAY CODE  
(CHAPTER 276, R 11)

This Legislative History is provided for the convenience of users of the Highway Code. It is not part of this Code.

**1. G. N. No. S 8/1975 — Highway Code 1975**

Date of commencement : 17 January 1975

**2. 1990 Revised Edition — Highway Code**

Date of operation : 25 March 1992

**3. G.N. No. S 1217/2018 — Highway (Revision) Code 2018**

Date of commencement : 5 May 2018

**4. G.N. No. S 244/2019 — Highway (Revision) Code 2019**

Date of commencement : 1 February 2019

**5. G.N. No. S 3173/2019 — Highway (Revision No. 2) Code 2019**

Date of commencement : 1 December 2019