
First published in the *Government Gazette*, Electronic Edition, on 30 April 2018 at 6 pm.

No. S 244

ROAD TRAFFIC ACT (CHAPTER 276)

ROAD TRAFFIC (DEALING IN POWER-ASSISTED BICYCLES) RULES 2018

ARRANGEMENT OF RULES

Rule

1. Citation and commencement
 2. Definitions
 3. Ban on display of non-compliant power-assisted bicycle
 4. Warning notices
 5. Advertisements of non-compliant power-assisted bicycle
 6. Penalties
- The Schedule
-

In exercise of the powers conferred by section 34(1) of the Road Traffic Act, the Minister for Transport makes the following Rules:

Citation and commencement

1. These Rules are the Road Traffic (Dealing in Power-Assisted Bicycles) Rules 2018 and come into operation on 1 May 2018.

Definitions

2. In these Rules —

“advertisement”, in relation to a non-compliant power-assisted bicycle, means —

- (a) any writing;
- (b) any still or moving picture, sign, symbol or other visual image;
- (c) any audible message; or

(d) any combination of 2 or more of those things in paragraphs (a), (b) and (c),

that gives publicity to, or otherwise promotes or is intended to promote, the purchase or use of a non-compliant power-assisted bicycle or a range of non-compliant power-assisted bicycles;

“non-compliant power-assisted bicycle” means a power-assisted bicycle the construction, weight or equipment of which does not comply with the requirements as to construction, weight or equipment as specified in the Schedule to the Road Traffic (Power-Assisted Bicycles — Approval) Rules 2004 (G.N. No. S 768/2004).

Ban on display of non-compliant power-assisted bicycle

3.—(1) A person who is, in the course of business, selling or supplying, or offering or exposing for sale or supply, by retail, any vehicle on any premises or place, must not display or cause to be displayed any non-compliant power-assisted bicycle on the premises or place —

(a) when so selling or supplying, or offering or exposing for sale or supply, any power-assisted bicycle; and

(b) knowing that, or reckless as to whether, the power-assisted bicycle is a non-compliant power-assisted bicycle.

(2) A person who is, in the course of business, selling or supplying, or offering or exposing for sale or supply, by retail, any vehicle on any premises or place, must ensure that no customer or member of the public can see any non-compliant power-assisted bicycle from inside or outside the premises or place.

(3) This rule does not apply to the display of a non-compliant power-assisted bicycle on any premises or place —

(a) to a customer of the business concerned at the customer’s request; or

(b) by a customer of the business concerned.

Warning notices

4.—(1) A person who is, in the course of business, selling or supplying, or offering or exposing for sale or supply, by retail, any vehicle on any premises or place, must display or cause to be displayed within the premises or place one warning notice about power-assisted bicycles.

(2) The person mentioned in paragraph (1) must ensure that the warning notice —

- (a) is in the form, and contains the text, as specified in the Schedule;
- (b) is not smaller than 29.7 cm × 42 cm;
- (c) is printed indelibly in colour with a minimum resolution of 300 dpi; and
- (d) is conspicuously displayed within the premises or place mentioned in paragraph (1) —
 - (i) at or near any point of sale in those premises or that place; or
 - (ii) at any point of payment in those premises or that place.

(3) In this rule —

“point of payment” means a cash register or counter at which payment for any purchase of a power-assisted bicycle is made;

“point of sale” means a part of any premises or place where any power-assisted bicycle is displayed for sale.

Advertisements of non-compliant power-assisted bicycle

5. A person who is, in the course of business, selling or supplying, or offering or exposing for sale or supply, by retail, any vehicle on any premises or place, must not display or cause to be displayed within the premises or place any advertisement about non-compliant power-assisted bicycles.

Penalties

6.—(1) A person who contravenes rule 3(1) or (2) or 5 shall be guilty of an offence and shall be liable on conviction —

(a) where the person is an individual —

- (i) to a fine not exceeding \$10,000 or to imprisonment for a term not exceeding 12 months or to both; but
- (ii) where the individual is a repeat offender, to a fine not exceeding \$20,000 or to imprisonment for a term not exceeding 24 months or to both; and

(b) in any other case —

- (i) to a fine not exceeding \$20,000; but
- (ii) where the person is a repeat offender, to a fine not exceeding \$40,000.

(2) A person who contravenes rule 4(1) shall be guilty of an offence and shall be liable on conviction —

(a) where the person is an individual —

- (i) to a fine not exceeding \$5,000 or to imprisonment for a term not exceeding 6 months or to both; but
- (ii) where the individual is a repeat offender, to a fine not exceeding \$10,000 or to imprisonment for a term not exceeding 12 months or to both; and

(b) in any other case —

- (i) to a fine not exceeding \$10,000; but
- (ii) where the person is a repeat offender, to a fine not exceeding \$20,000.

(3) In these Rules, “repeat offender”, in relation to any offence under these Rules, means a person who —

- (a) is convicted, or found guilty, of such an offence (called the current offence); and
- (b) has been convicted or found guilty of the same offence, on at least one other earlier occasion within the period of 5

years immediately before the date on which the person is convicted or found guilty of the current offence.

[S 246/2020 wef 03/04/2020]

THE SCHEDULE

Rule 4(2)(a)

THE SCHEDULE — *continued*



WARNING NOTICE

Device Requirements for Bicycles, Personal Mobility Devices (PMDs), and Power Assisted Bicycles (PABs) Used on Public Paths

Maximum Unladen Weight

20kg



Maximum Device Width

70cm



Maximum Device Speed
(Only for motorised devices)

25km/h

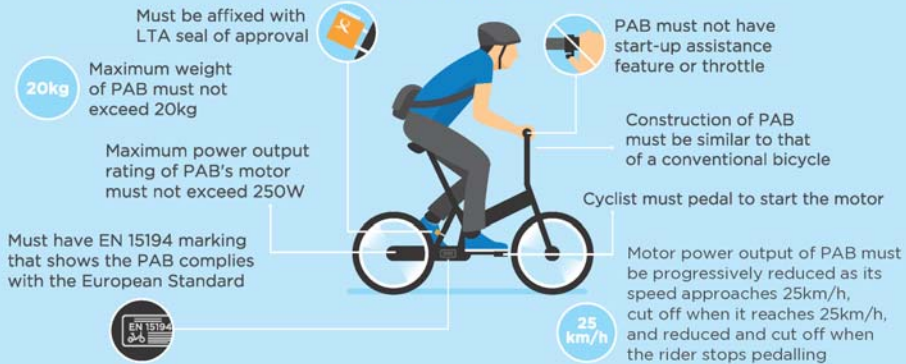


Certified to a Device Safety Standard
(Only for motorised PMDs)

UL2272

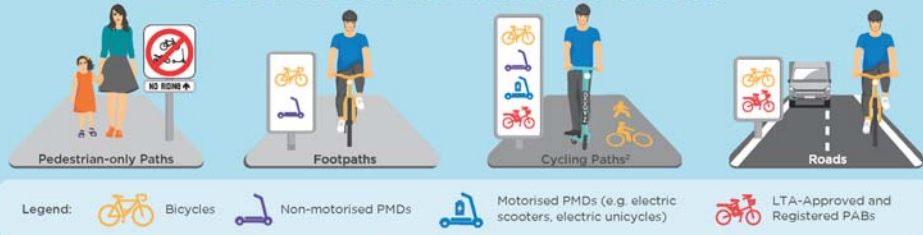


Technical Specifications for Power Assisted Bicycles (PABs) Used on Public Paths and on Roads



Penalty for riding non-compliant bicycle, PAB or PMD on public path
FINE up to \$10,000, or JAIL up to 6 months, or BOTH

Where Devices are Allowed to be Used¹



¹Riding of personal mobility devices, power-assisted bicycles or bicycles may be banned on certain footpaths or cycling paths even if compliant.
²Cycling paths refer to paths which are marked out with a bicycle logo or signage (and declared to be a shared path in the Active Mobility Act 2017).

Penalty for riding bicycle, PMD or PAB on pedestrian-only path | **Penalty for riding motorised PMD or PAB on footpath** | **Penalty for riding PMD on road**
FINE up to \$2,000, or JAIL up to 3 months, or BOTH

Repeat offenders may face higher court fines and/or jail terms

[S 246/2020 wef 03/04/2020]

Made on 27 April 2018.

LOH NGAI SENG
*Permanent Secretary,
Ministry of Transport,
Singapore.*

[LTA/LEGL/L18.029.002/JAS/DT/DPAB.18.01; AG/LEGIS/SL/
276/2015/22 Vol. 1]

(To be presented to Parliament under section 141(1) of the Road
Traffic Act).